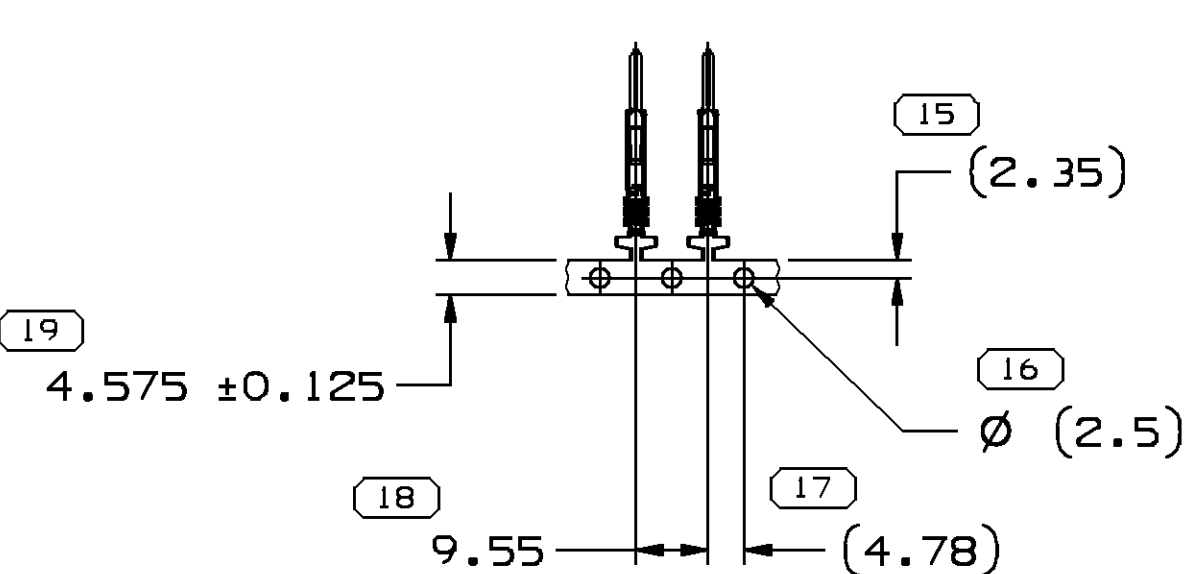
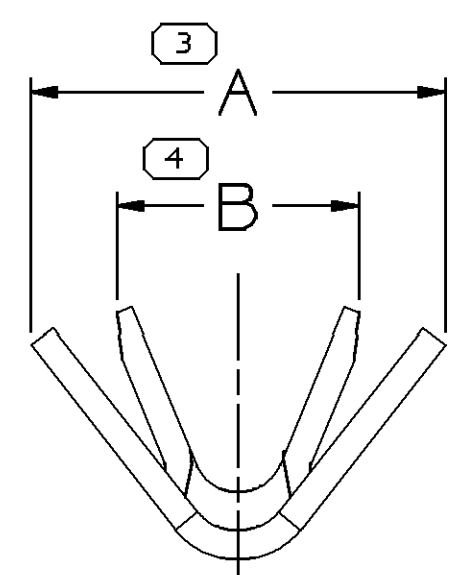
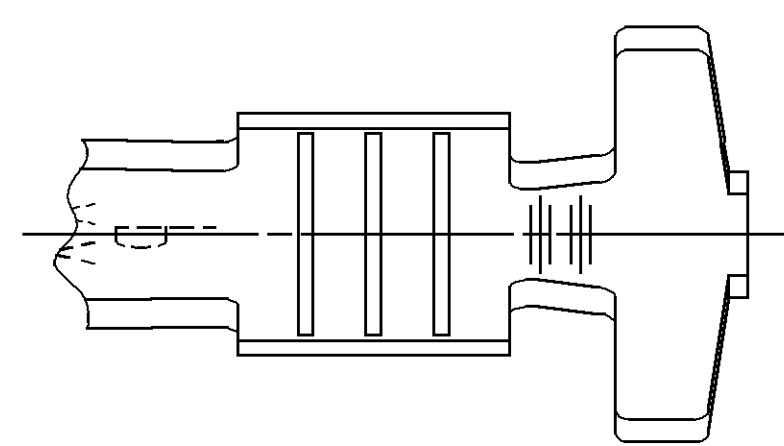
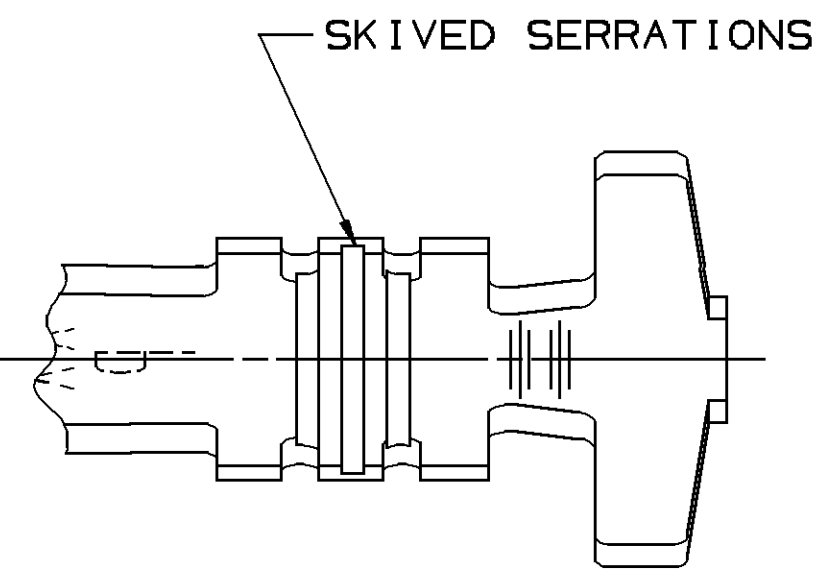
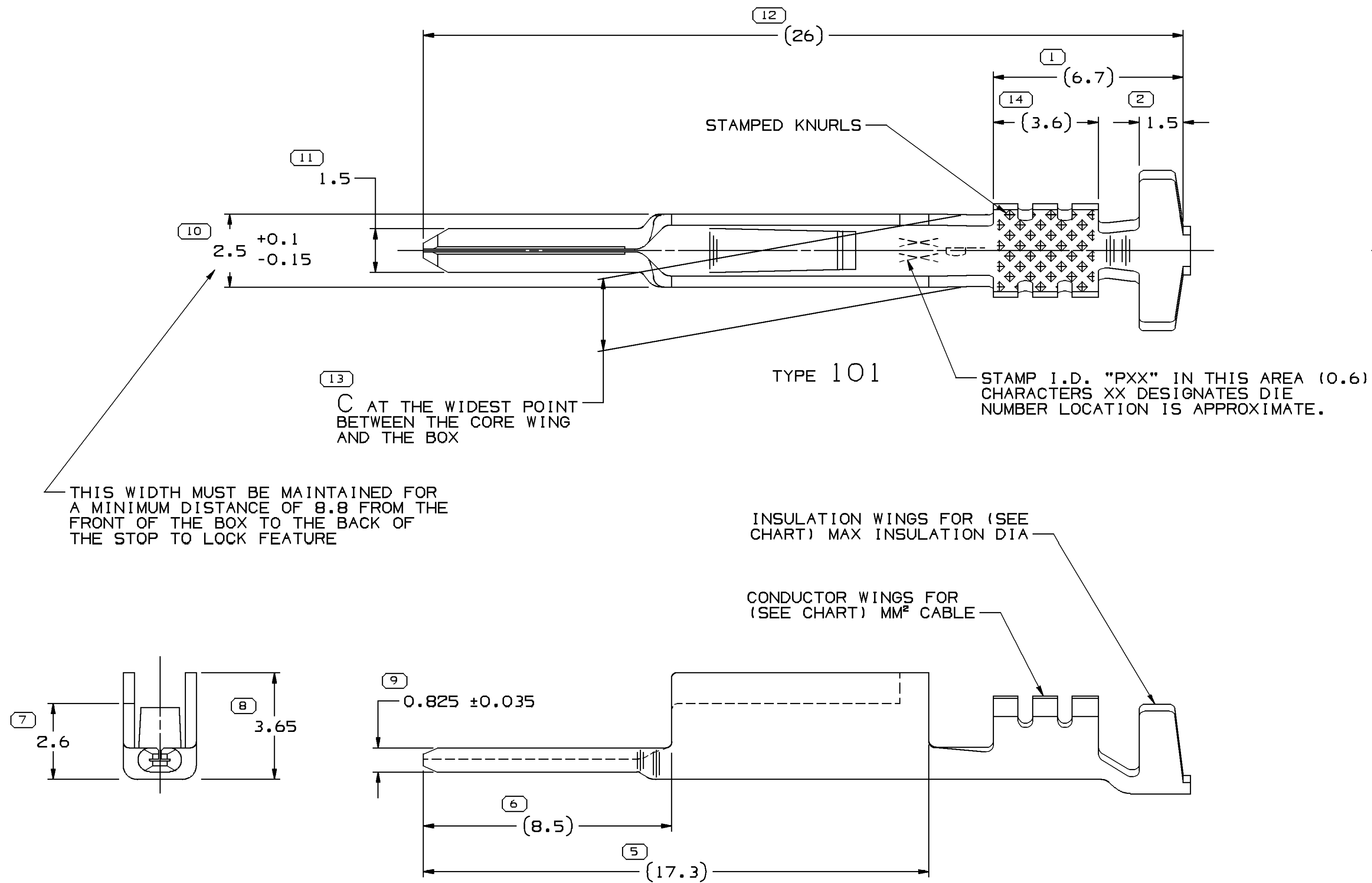


SYMBOL DEFINITION		MISSING SYMBOLS	
A DIMENSION WITHOUT AN INSPECTION REPORT SYMBOL DOES NOT REQUIRE INSPECTION. IT MAY BE CONTROLLED ON THE INDIVIDUAL COMPONENT DRAWING.	TOTAL NO OF INSPECTIONS REQUIRED	19	NO MISSING SYMBOL NUMBER
	LAST NO. USED		
		19	

DWG STATUS				ZONE		REVISION HISTORY				AUTH		DR	APV/D	1	2
DATE	STG	REV	N/P	CHG											
26N096	-	-	-	-								960005	WTP	WTP	WTP
						ALL PARTS-PID CREATED FROM SEPARATE PID'S NO REV UPDATED REQ'D 15317765 RELEASED TO REV "A"									
26N096	-	-	-	-								176842	WTP	WTP	WTP
						ALL ACTIVE PARTS-REVISED-REV LEVELS ADVANCED									
13JA96	-	-	-	-								176913	EMB	EMB	AUG
						12047581-12059894-12191889 & 15317765 REVISED-REV LEVELS ADVANCED									
11MR97	-	-	-	-								178061	MVA	MVA	MVA
						15317765 REVISED-REV LEVEL ADVANCED									
08MY97	-	-	-	-								177551	PHC	PHC	JVS
						ALL ACTIVE PARTS-REVISED-NO REV UPDATE REQ'D									
08MY97	-	-	-	-								970005	PHC	PHC	JVS
						15355307-RELEASED TO REV "A"									
15JL97	-	-	-	-								181156	EMB	EMB	BPO
						12191889-PID UPDATED- NO REV UPDATE REQ'D									
18JA05	R	01	-	-								262972	MM	MM	MM
						REVISED MATERIAL SPEC									
30MR05	R	02	-	-								265258	LMB	LMB	MM
						ALL ACTIVE PARTS - TOLERANCE ON DIM #4 WAS ±0.1									
19MY05	R	03	-	-								268260	GPS	JVM	BD6
						ALL ACTIVE PARTS - UPDATED PDM ATTRIBUTES									
16AU05	R	04	-	-								270616	RTV	FRG	MKM
						ALL ACTIVE PARTS - ADDED STAMP I.D. LABEL									
22N005	R	05	-	-								274640	MDH	JVM	BD6
						12191889 - RESTRICTED AND ADDED PROCESS NOTE # 2, 15305307 - RESTRICTED AND CABLE SIZE WAS 0.35-0.5									
15JA09	R	06	-	-								407112	SCR	ECB	SEM
						ALL ACTIVE PARTS - ADDED LABEL AND DIM 2.5 ±0.1/-0.15 WAS 2.5 ±0.1									
08AP09	R	07	-	-								407299	JTZ	FKV	RAP
						12040993 - OBSOLETE & REPLACED BY 12047581									
10JA11	R	08	-	-								413005	LHT	LHT	LHT
						ALL ACTIVE PARTS- UPDATED PDM ATTRIBUTES									
05FE13	R	09	-	-								421357	JRV	FRF	JRV
						ALL ACTIVE PARTS- UPDATED PDM ATTRIBUTES									



CARRIER STRIP VIEW

NOTES

1. UNLESS OTHERWISE SPECIFIED AND/OR INDICATED:

DIMENSIONS ARE TO FACE OF VIEW SHOWN AND AUTOMATICALLY ROUNDED BY COMPUTER FOR INSPECTION (SEE MATH MODEL FOR PRECISE DIMENSIONS). FOR ALL OTHER DIMENSIONS NOT SHOWN BUT REQUIRED FOR TOOL BUILD, SEE MATH MODEL FOR PRECISE TOOL PATH DATA.

2. REFERENCE MATING COMPONENTS OR EQUIVALENT:

TERMINAL 12047767  
MAX INSULATION CRIMP 3 HIGH X 2.6 WIDE.

PROCESS NOTE

1. LOOSE PLATING AND METAL 'FLAKES' TO BE WASHED FROM TERMINAL.
2. 12191889 IS SAME AS 12059894 BUT TERMINAL HAS TO BE WASHED AT MAKE DIE OR PROCESSED WITH NYOSIL-M25 LUBRICANT.

UNPLATED		PLATED		MAT'L SPEC		SIZE (MM²)		I.D.		DIA		TYPE	
PART NO	REV	MAT'L SIZE	MAT'L SPEC	PART NO	REV	RESTRICTED USAGE	PROCESS NOTES	MAT'L SPEC	SIZE (MM²)	I.D.	DIA	TYPE	A
12040993	J6	0.381 X 34.52	M1403383	15305307	A8	RESTRICTED		M3617383 C42500 1/2 HD	2(0.35, 0.6)	226	4.4	3.2	2.55
				15317765	D7			M3617383 C42500 1/2 HD	0.35-0.5	21	1.1-1.3	101	2.5
				12191889	D8	RESTRICTED	2	M3617383 C42500 1/2 HD	0.35-0.5	21	2.4-1.47	101	3.8
				12124731	B		1	M3617383 C42500 1/2 HD	0.35-0.5	21	2.4-1.47	101	3.8
		0.381 X 34.52		12059894	F7			M3617383 C42500 1/2 HD	0.5-0.8	19	2.4-1.84	101	4.4
		0.381 X 34.52		12047686	D			M3617383 C42500 1/2 HD	0.35-0.5	21	2.4-1.47	101	3.8
		0.381 X 34.52		12047581	J7			P3607ABN	0.35	22	1.86 MAX	102	3.6
								M3617383 C42500 1/2 HD	0.5-0.8	19	2.4-1.84	101	4.4

DIMENSIONAL RANGE (MM)		CHART	
FROM	TO	0	> 12
0	12	1	2
12	25	3	4
25	50	5	6
50	100	7	8
100	200	9	10
200	500	11	12
500	1000	13	14
1000	2000	15	16
2000	5000	17	18
5000	10000	19	20

THIRD ANGLE PROJECTION		DO NOT SCALE	
USE MATH DATA	USE MATH DATA	USE MATH DATA	USE MATH DATA

**DELPHI**  
DELPHI PACKARD ELECTRICAL/ELECTRONIC ARCHITECTURE  
WARREN, OH  
COPYRIGHT 1996 DELPHI CORPORATION AND/OR ITS AFFILIATES. ALL RIGHTS RESERVED.  
THIS DRAWING IS THE PROPERTY OF DELPHI CORPORATION AND CONTAINS DELPHI CONFIDENTIAL INFORMATION. THE REPRODUCTION, DISTRIBUTION AND UTILIZATION OF THIS DOCUMENT OR ITS RELATED CAD DATA, AS WELL AS COMMUNICATION OF ANY CONTENT TO OTHERS, WITHOUT EXPRESS AUTHORIZATION, IS PROHIBITED.

DATE	
APV01 W. TURNBULL	22N096
APV02 W. TURNBULL	22N096
APV03 M. CHUPAK	22N096
APV04	
APV05	

SUBSTANCES OF CONCERN AND RECYCLED CONTENT PER DELPHI 19449901

DRAWING NAME  
TAXI TERM M W/P 150

DRAWING NUMBER  
12040995

SIZE	SCALE	FRAME NO	SHEET NO	STG	REV	N/P
A0	10:1	1 OF 1	1 OF 3	R	09	-

# Mouser Electronics

Authorized Distributor

Click to View Pricing, Inventory, Delivery & Lifecycle Information:

[Aptiv:](#)

[12047581-L](#) [12059894-L](#)