

**STRICTLY
CONFIDENTIAL**

NOTE :

1. SURFACE MUST BE FREE FROM BURRS.
2. INSULATION REDUCED CABLE
3. CAMBER: 5 mm MAX IN 500 mm LENGTH
4. "FCI" TRADE MARK ACCORDING IPS097 TYPE 2
SIZE 1.5 LOCATED AS SHOWN.
5. PLATING

- 1) HC3SHFBSIGP - HC3SHFBSIG127 - HC3SHFBSIG127M
(GOLD PLATING VERSION)
- NI 1 um. MIN. OVERALL
- NI 7 um. MIN ON THE POINT

- CAT. HC3SHFBSIGP - ZONE 1 AU 0.4 um. MIN. ON CONTACT POINTS
- ZONE 2 (Bright) Sn 100% 2.0 um. Min.
EXCEPT ON POINTS 1 E 2 (BARRELS) 1.0 um. Min.
- CAT. HC3SHFBSIG127 - ZONE 1 AU 1.27 um. MIN. ON CONTACT POINTS
- ZONE 2 (Bright) Sn 100% 2.0 um. Min.
EXCEPT ON POINTS 1 E 2 (BARRELS) 1.0 um. Min.

- CAT. HC3SHFBSIG127M - ZONE 1 AU 1.27 um. MIN. ON CONTACT POINTS
- ZONE 2 (Mat) Sn 100% 2.0 um. Min.
EXCEPT ON POINTS 1 E 2 (BARRELS) 1.0 um. Min.

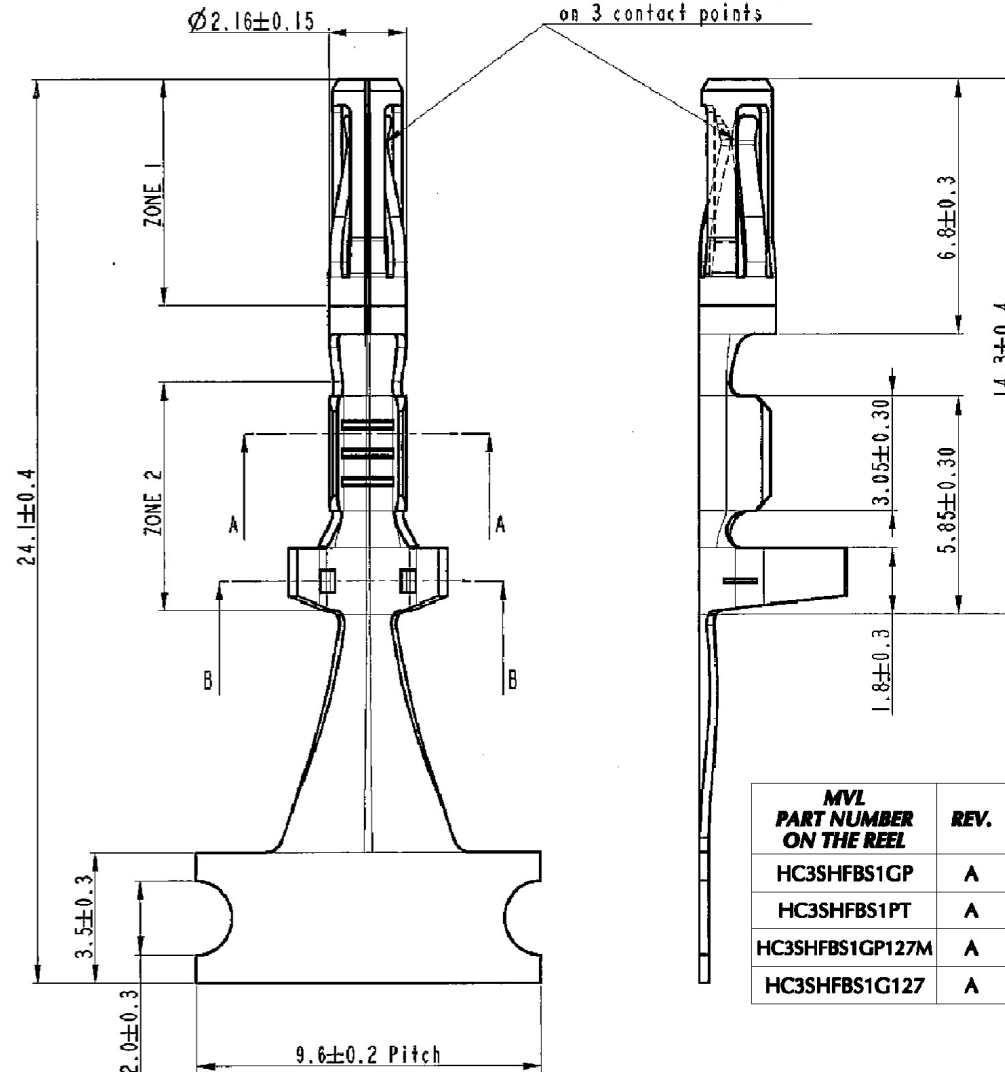
- 2) HC3SHFBSIPT
PRE-TINNED VERSION

6. PRODUCT SPEC. "FCI" IPS 114 REV.02

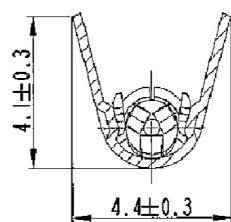
MVL PART NUMBER ON THE REEL	REV.	DELPHI PART NUMBER	REV.
HC3SHFBS1GP	A	15368848	01
HC3SHFBS1PT	A	33504528	01
HC3SHFBS1GP127M	A	33522314	01
HC3SHFBS1G127	A	33504530	01

HC3SHFBSIGP Gold Plated	K55 - CuNiSi	5000	0.35 - 0.5
HC3SHFBSIPT		7000	0.35 - 0.5
HC3SHFBSIGP127M Gold Plated	PHOSPHOR BRONZE	5000	0.35 - 0.5
HC3SHFBSIG127 Gold Plated		5000	0.35 - 0.5
CAT. NUMBER FINISHED	CAT. NUMBER FINISHED	QTYx REEL	WIRE RANGE

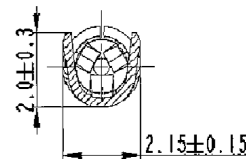
CONTACT POINTS (TOTAL 3)
Gold must be measured
on 3 contact points



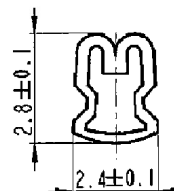
SECTION B-B



SECTION A-A



**INSULATION BARREL
CRIMPING DIMENSION**



14-07742	25-09-2014	A			Updated Format and added DELPHI P/Ns	F.G.		M.C.
42-05	07-06-2005	09			Post Tinned Treatment was 90/10 SnPb	E.C.		M.C.
57/02	02/10/2002	08			See ECN 57/02 - Add New P/N Material	M.M.		M.C.
ECN-NO. NUMERO - ECN	DATE DATA	DD / MM / YY	REVISION REVISIONE	POSITION POSIZIONE	CHANGE DESCRIPTION DESCRIZIONE MODIFICA	DRAWN BY DISEGNATORE	CHK. BY CONTROLLATO	APPR. BY APPROVATO
PRODUCT SPEC SPEC. DI PRODOTTO	PACKAGING SPEC SPEC. DI IMBALLAGGIO	APPLICATION SPEC SPEC. DI APPLICAZIONE	COPYRIGHT DELPHI CORPORATION AND/OR ITS AFFILIATES. ALL RIGHTS RESERVED. REVISED THIS DRAWING IS THE PROPERTY OF DELPHI CORPORATION. THE REPRODUCTION, DISTRIBUTION AND UTILIZATION OF THIS DOCUMENT OR ITS RELATED CAD DATA, AS WELL AS COMMUNICATION OF ANY CONTENT TO OTHERS, WITHOUT EXPRESS AUTHORIZATION IS PROHIBITED.					
-	-	-						
TOI/FRANCS TOLLERANZE COUNTERPART N°. CONTROPARTE N°.		± 1.5 / ± 2	MATERIAL : MATERIALE :	SEE TABLE	SURFACE FINISH FINITURA SUPERFICIALE	DELPHI DELPHI PACKARD ELECTRICAL/ELECTRONIC ARCHITECTURE TORINO, ITALY		CAD SYSTEM pro / eng.
DO NOT SCALE DRAWING DISEGNO FUORI SCALA		DATE DATA	NAME NOME	COLOUR : COLORE :	-	C	ISO PROJECTION PROIEZIONE ISO	DWG SIZE FORMATO DIMENSION IN MILLIMETERS DIMENSIONI IN MILLIMETRI
DRAWN BY DISEGNATORE		02/10/02	M.M.	TOOL NO.	-	DRAWING NUMBER NUMERO DISEGNO		A3
CHECKED BY CONTROLLATO				TITLE DESCRIZIONE	HC3 FEMALE CONTACT SHORT VERSION			
APPROVED BY APPROVATO		02/10/02	T.C.	ESR NO. NUMERO ESR	EU -	CAT. NO. NUMERO CAT	SEE TABLE	FILE NAME NOME FILE
								FSC 307882
								FSC 307882
								SCALE SCALA
								-

Mouser Electronics

Authorized Distributor

Click to View Pricing, Inventory, Delivery & Lifecycle Information:

[Aptiv:](#)

[HC3SHFBS1GP](#)