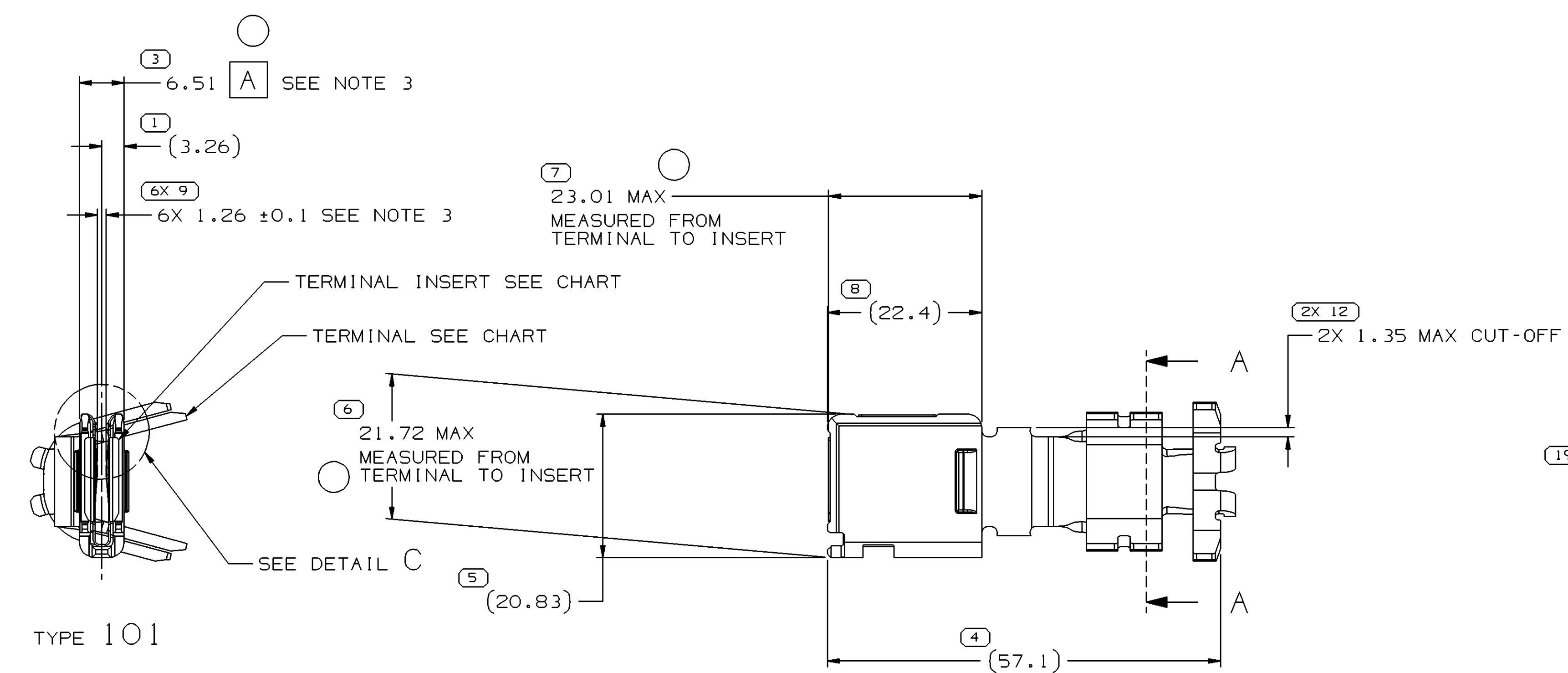
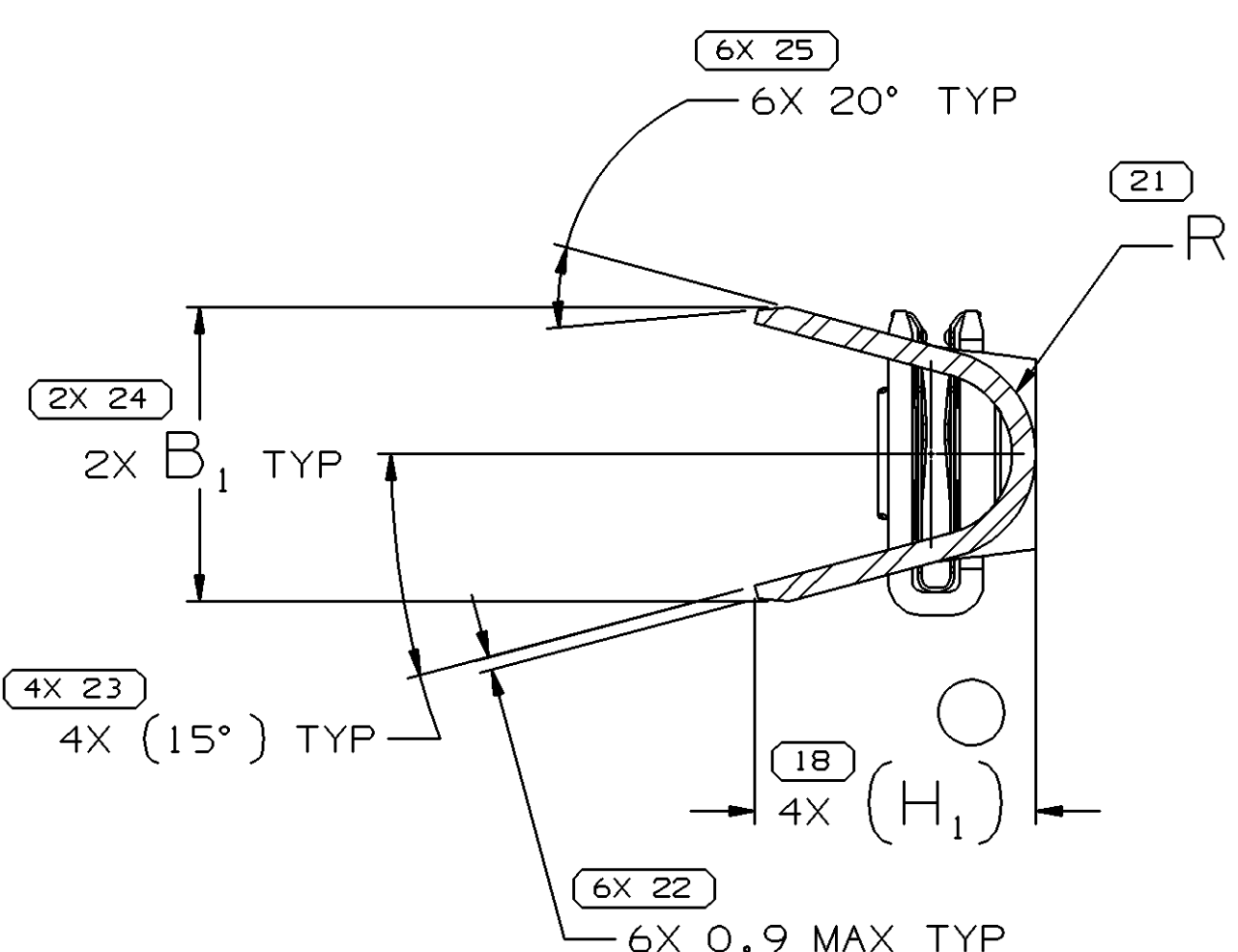
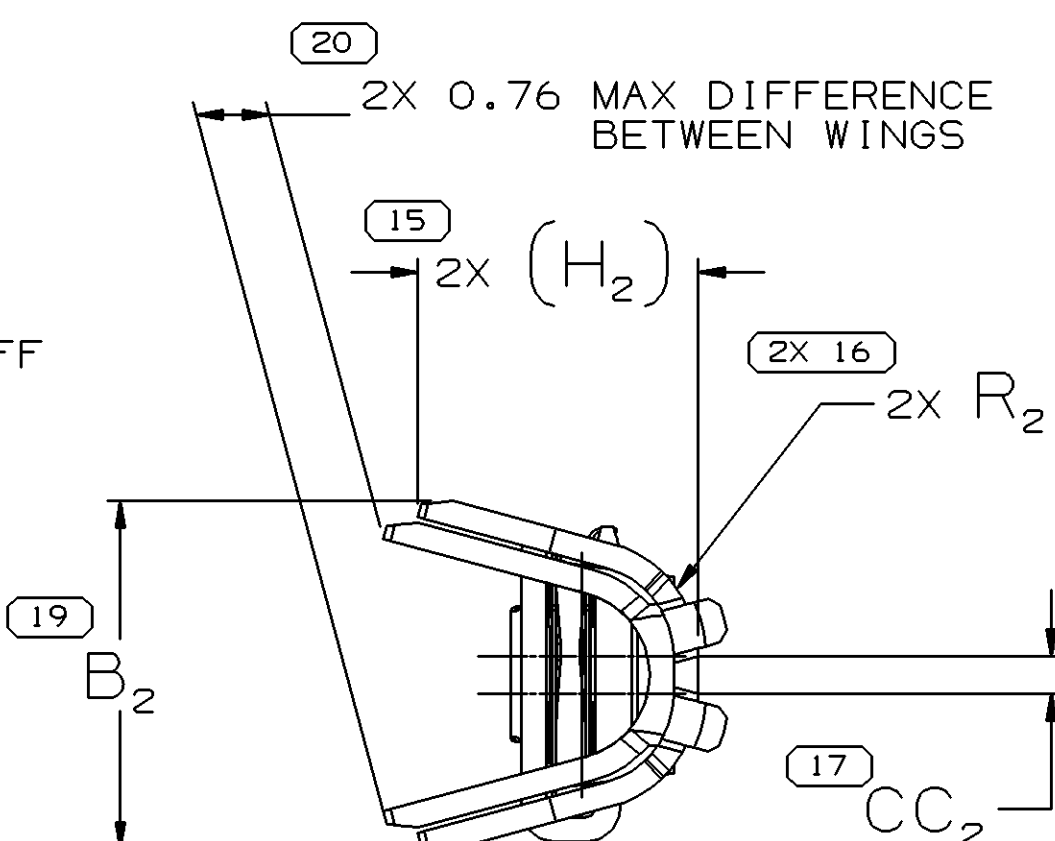


CARRIER STRIP FORMED VIEW
TYPE 101

WIRE CRIMPED VIEW
TYPE 101



TYPE 101

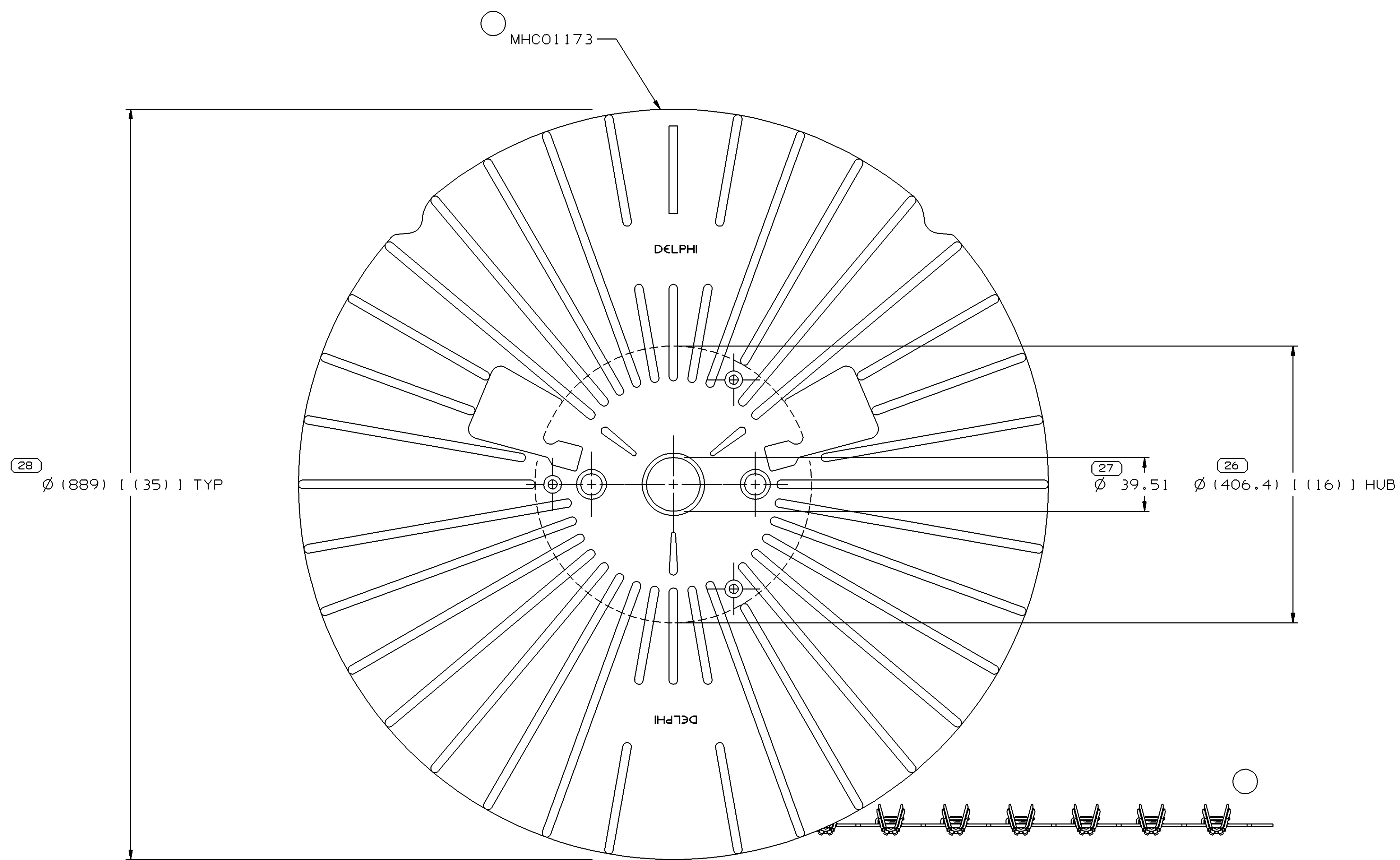


TYPE 102
SAME AS TYPE 101
EXCEPT AS SHOWN
SCALE 2:1

TYPE 103
SAME AS TYPE 101
EXCEPT AS SHOWN
SCALE 2:1

TYPE 104
SAME AS TYPE 101
EXCEPT AS SHOWN
SCALE 2:1

REEL AND CARRIER STRIP VIEW
NO SCALE

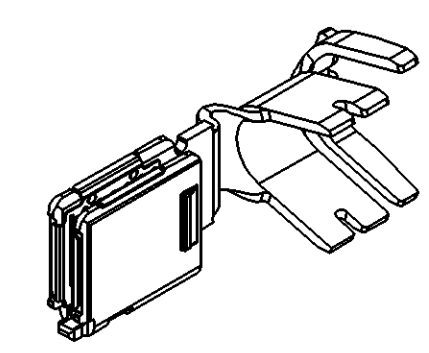


PACKAGING NOTES:

1. DIMENSIONS IN BRACKETS [] ARE IN INCHES.
2. TERMINALS MUST BE SINGLE WRAPPED ON PLASTIC REEL WITH MINIMUM 50 LB. PASSIVATED (NON ABRASIVE) SEPARATING MATERIAL.
3. TERMINALS MUST FLOW OFF BOTTOM OF REEL FROM LEFT TO RIGHT WITH CARRIER STRIP FACING OBSERVER AND CRIMP WINGS FACING UPWARD.
4. PARTS SHOULD BE PLACED IN CLEAN PLASTIC TUBS OR BAGS LINED WITH POLYETHYLENE BAGS DURING PROCESSING. BAGS SHALL BE CLOSED DURING STORAGE AND SHIPMENT. NOTE: WAX LINED BOXES MAY BE SUBSTITUTED FOR POLYETHYLENE BAGS. REELS TO BE PROTECTED FROM SHIPPING DAMAGE.
5. PACKAGING SHOULD MEET GM 1738 REQUIREMENTS.

NOTES

1. UNLESS OTHERWISE SPECIFIED AND/OR INDICATED:
DIMENSIONS ARE TO FACE OF VIEW SHOWN AND AUTOMATICALLY ROUNDED BY COMPUTER FOR INSPECTION (SEE MATH MODEL FOR PRECISE DIMENSIONS). FOR ALL OTHER DIMENSIONS NOT SHOWN BUT REQUIRED FOR TOOL BUILD, SEE MATH MODEL FOR PRECISE TOOL PATH DATA.
2. VISUAL CRACKS ARE NOT PERMISSIBLE.
3. DIMENSION TO BE MEASURED WITH SIDES OF INSERT HELD PARALLEL TO 6.51 [A] DIMENSION.
4. HIGH FLEX CABLE RECOMMENDED FOR 19mm² AND 32mm² APPLICATIONS.
HIGH FLEX CABLE REQUIRED FOR 50mm² AND 62mm² APPLICATIONS.



SCALE 1:1

DRAWING NUMBER			
13513040			
SIZE	SCALE	FRAME NO	SHEET NO
A1x3	2:1	2 OF 2	1 OF 1

PART NO	REV	N/P	TERMINAL	TERMINAL INSERT	TYPE	STATUS	SIZE (MM ²)	ID	DIAMETER	B ₁	B ₂	C ₂	(H ₁)	(H ₂)	CC ₂	R ₁	R ₂	MATING DIRECTION
15496986	03	-	15496200	15496201	104	-	13 TO 19	5	8.43 +/-0.41	12.3	15.9	30	11.7	12.2	2.3	4.8	5.5	RT ANGLE
13513039	02	-	13513035	15496201	101	-	62	00	14.71 +/-0.41	20.1	23	45.6	19.1	18.1	2.5	7.2	7.2	RT ANGLE
13513038	02	-	13513034	15496201	102	-	40 TO 50	0	13.61 +/-0.41	17.4	21.1	44	17.8	18.2	2.5	6	6.7	RT ANGLE
13513037	02	-	13513033	15496201	103	-	32	2	10.75 +/-0.41	15	18.6	36.5	15	14.9	2.3	5.4	6.3	RT ANGLE

DWG TYPE		PART DRAWING	
STYLE		DISTR CODE	
VOLUME (CM ³)			
UNLESS OTHERWISE SPECIFIED			
THIS DOCUMENT IS IN ACCORDANCE WITH THE 1914-1916 AS AMENDED BY THE 1914-1916 DIMENSIONING AND TOLERANCE IN PRACTICE (DIP) STANDARD. REVISIONS TO THIS DOCUMENT SHALL BE SHOWN SEPARATELY REVISIONS OF DATA REFERENCES.			
ALL DIMENSIONS ARE IN MILLIMETERS			
THIRD ANGLE PROJECTION			
DO NOT SCALE			
USE MATH DATA			

DELPHI			
DELPHI PACKARD ELECTRIC SYSTEMS WARREN, OH			
OR		DATE	
APPROV	BARRY BURNS	100004	
APPROV	BARRY BURNS	100004	
APPROV	SCOTT MC CLUCAS	100004	
APPROV			
SUBSTANCES OF CONCERN AND RECYCLED			
CONTENT FOR DELPHI (1000001)			
MATERIAL			
SEE DRAWING			
DRAWING NAME			
TAXI ASM TERM F PWR PACK 2000 SEALED			
DRAWING NUMBER			
13513040			
SIZE	SCALE	FRAME NO	SHEET NO
A1x3	2:1	1 OF 2	1 OF 1

Mouser Electronics

Authorized Distributor

Click to View Pricing, Inventory, Delivery & Lifecycle Information:

[Aptiv:](#)
[15496986](#)