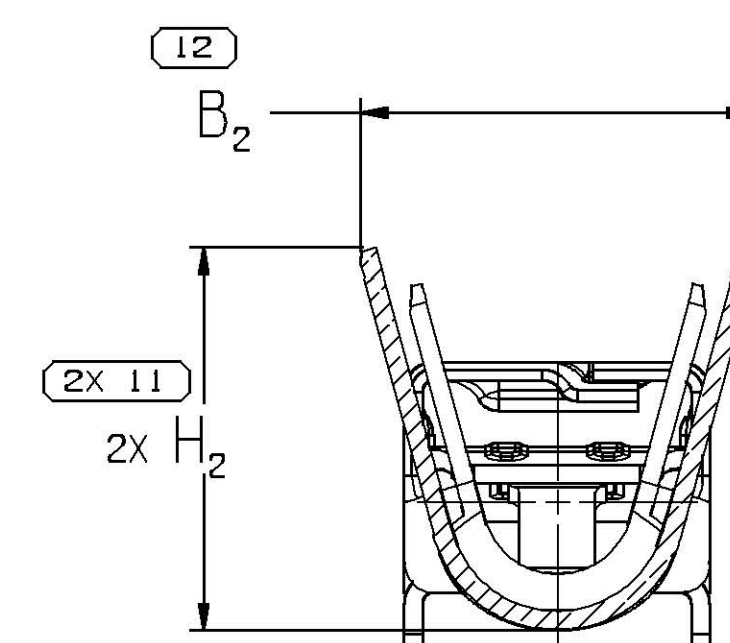
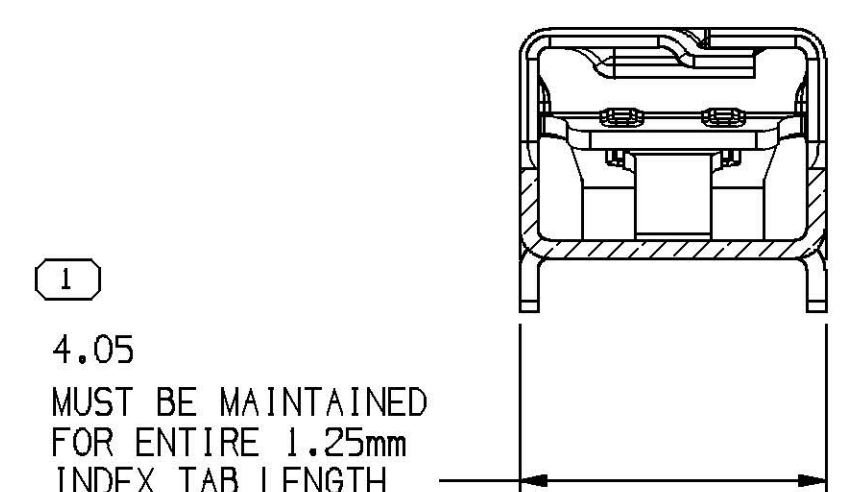


SECTION B - B



SECTION C - C



SECTION K - K

NOTES

1. UNLESS OTHERWISE SPECIFIED AND/OR INDICATED:

- DIMENSIONS ARE TO FACE OF VIEW SHOWN AND AUTOMATICALLY ROUNDED BY COMPUTER FOR INSPECTION (SEE MATH MODEL FOR PRECISE DIMENSIONS). FOR ALL OTHER DIMENSIONS NOT SHOWN BUT REQUIRED FOR TOOL BUILD, SEE MATH MODEL FOR PRECISE TOOL PATH DATA.
2. RECOMMENDED MATING BLADE THICKNESS 0.8 +0.04/-0.03mm RECOMMENDED MATING BLADE WIDTH NOT TO EXCEED 2.9mm AND NO LESS THAN 2.4mm. SEE USCAR-001 DRAWING (2.8 BLADE) FOR OTHER MATING BLADE REQUIREMENTS.
3. DO NOT PROBE, TEST OR OTHERWISE CONTACT THE INTERIOR REGION (THE SPRING OR ANY MOVING PART) OF THIS TERMINAL. SEVERE DAMAGE CAN OCCUR, COMPROMISING THE PERFORMANCE OF THE ELECTRICAL INTERFACE.
4. MAXIMUM CURRENT CAPACITY AS DEFINED BY USCAR-2 R5 SECTION 5.3.3 IS 35 AMPS WITH 5.0 mm² COPPER CABLE.
5. * DENOTES DIMENSIONS MADE AT CUT-OFF AND CRIMP DIE
6. PLUS ANGLE IS WING BOTTOM SURFACE ROTATED COUNTERCLOCKWISE AGAINST THE BOX BOTTOM SURFACE.
7. PLATING TYPE:

1. REFLOW TIN 1.9 - 3.3 MICROMETERS THICK OVER NICKEL UNDERPLATE 0.13 - 0.5 MICROMETERS THICK.

PLATING TYPE INFORMATION SHOWN ABOVE IS FOR REFERENCE ONLY; PLATING REQUIREMENTS ARE CONTAINED IN APPLICABLE MATERIAL SPECIFICATIONS.

8. PARTS MEET THE PERFORMANCE REQUIREMENTS OF GMW3191 DEC 2007 AND SAE/USCAR-2 R5 REVISIONS FOR THE FOLLOWING CLASSIFICATIONS: TEMPERATURE CLASS 3 (-40°C TO +125°C) VIBRATION CLASS 1 (ON BODY OR CHASSIS) SEALING CLASS 1 (UNSEALED).

SYMBOL DEFINITION			
A DIMENSION WITHOUT AN INSPECTION REPORT SYMBOL () DOES NOT REQUIRE INSPECTION. IT MAY BE CONTROLLED ON THE INDIVIDUAL COMPONENT DRAWING.		TOTAL NO OF INSPECTIONS REQUIRED	24
		LAST NO. USED	17

MISSING SYMBOLS					
5					

DATE		STG	REV	W/R	CHG	ZONE	REVISION HISTORY		AUTH	DR	APVD	APVD
10AP17		R	01	-	-	-	ALL PARTS - RELEASED PART DRAWING		436283	KYT	KYT	BVC
16MY17		R	02	-	-	-	ALL PARTS - UPDATED PART AVAILABILITY		436694	DAG	DAG	BVC
27JUL17		R	03	-	-	-	ALL PARTS - UPDATED PDM ATTRIBUTES		437256	JVM	JVM	BVC

PART NUMBER	REV	N/P	MATERIAL DESCRIPTION	MATERIAL THICKNESS	CONTACT AREA PLATING TYPE (SEE NOTE 7)	CRIMP AREA PLATING TYPE (SEE NOTE 7)	I.D.	CABLE SIZE (mm²)	CABLE DIAMETER	B ₁ ±0.15	B ₂ ±0.25	(H ₁)	(H ₂)
35063083	01	AB	TIN PLATED HIGH PERF COPPER ALLOY	0.25	I	I	10	4 - 5	3.2 - 4.2	5.1	6	5	5.5
35063088	01	AB	TIN PLATED HIGH PERF COPPER ALLOY	0.25	I	I	25	0.13 - 0.22	0.81 - 1.2	1.6	2	1.6	1.9
35063087	01	AB	TIN PLATED HIGH PERF COPPER ALLOY	0.25	I	I	21	0.3 - 0.6	1.2 - 1.9	2.15	2.8	2.25	3
35063086	01	AB	TIN PLATED HIGH PERF COPPER ALLOY	0.25	I	I	17	0.75 - 1	1.7 - 2.25	2.7	3.4	2.7	3.5
35063085	01	AB	TIN PLATED HIGH PERF COPPER ALLOY	0.25	I	I	14	1.5 - 2.5	2 - 3	3.55	4.4	3.7	4.55
35063084	01	AB	TIN PLATED HIGH PERF COPPER ALLOY	0.25	I	I	13	2 - 3	2.3 - 3.4	3.9	5.2	4.1	5.05

A. LINE DRAWN THROUGH A PART NUMBER INDICATES THAT PHYSICAL PARTS ARE NOT AVAILABLE FOR ORDERING.	
PART NUMBERS THAT DO NOT HAVE A LINE PRESENT INDICATE THAT PHYSICAL PARTS ARE AVAILABLE FOR ORDERING.	
UNLESS OTHERWISE SPECIFIED	
THIS DOCUMENT IS IN ACCORDANCE WITH ASME Y14.5M-1994 AS MODIFIED BY THE 3D MODEL DIMENSIONING AND TOLERANCING ADDENDUM-2011. SEPARATE PATTERNING OF FEATURES MAY BE OBTAINED SEPARATELY. RESOLVING OF DATUM REFERENCES.	
ALL DIMENSIONS ARE IN MILLIMETERS	
REFERENCE	
DIMENSIONS ENCLOSED IN () INDICATE REFERENCE DIMENSIONS AND NO TOLERANCE LIMITS ARE ESTABLISHED	
DIMENSIONAL RANGE (MM)	
FROM	TO
0	>12
12	>12
10.1	±0.2
10.1	±0.2
ANGULAR TOLERANCE 12°	
THIRD ANGLE PROJECTION	
DO NOT SCALE	
USE MATH DATA	

DELPHI	
DELPHI PACKARD ELECTRICAL/ELECTRONIC ARCHITECTURE	
WARREN, OH	
COPYRIGHT 2017 DELPHI CORPORATION AND/OR ITS AFFILIATES. ALL RIGHTS RESERVED.	
THIS DRAWING IS THE PROPERTY OF DELPHI CORPORATION AND CONTAINS DELPHI CONFIDENTIAL INFORMATION. THE REPRODUCTION, DISTRIBUTION AND UTILIZATION OF THIS DOCUMENT OR ITS RELATED CAD DATA, AS WELL AS COMMUNICATION OF ANY CONTENT TO OTHERS, WITHOUT EXPRESS AUTHORIZATION, IS PROHIBITED.	
DATE	
DR	
APV01 YAMIR TELLEZ	07AP17
APV02 YAMIR TELLEZ	07AP17
APV03 GREG V. CHURLEY	07AP17
APV04	
APV05	
SUBSTANCES OF CONCERN AND RECYCLED CONTENT, PER DELPHI (3944990)	
MATERIAL SEE CHART	
DRAWING NAME	
TAXI TERM F OCS 2.8 SN	
DRAWING NUMBER	
13819334	
SIZE	A0
SCALE	10:1
FRAME NO	1 OF 1
SHEET NO	2 OF 2
STG	R
REV	03
N/P	-

Mouser Electronics

Authorized Distributor

Click to View Pricing, Inventory, Delivery & Lifecycle Information:

[Aptiv:](#)
[35063084](#)