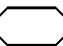
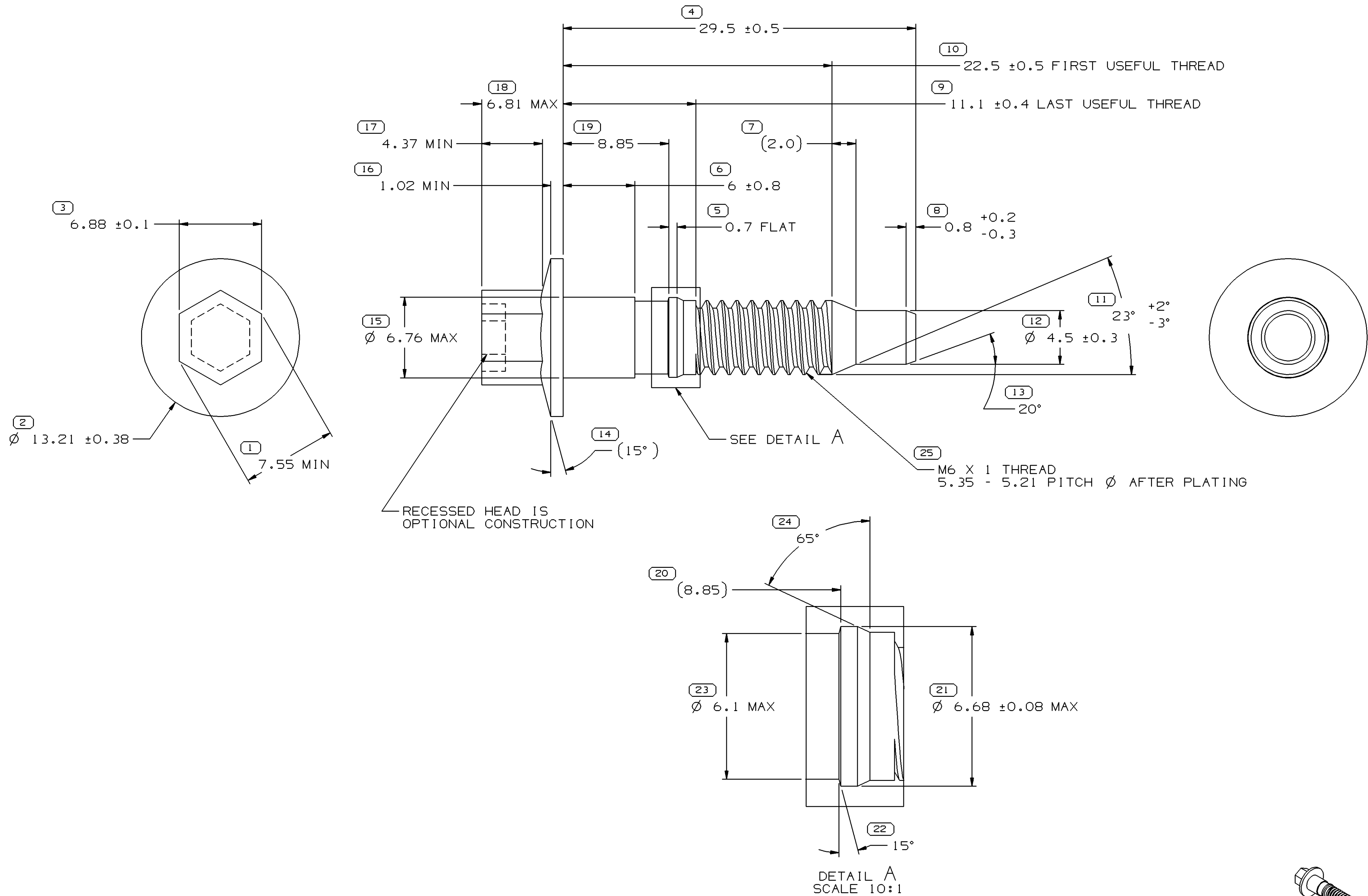


SYMBOL DEFINITION		
A DIMENSION WITHOUT AN INSPECTION REPORT SYMBOL  DOES NOT REQUIRE INSPECTION. IT MAY BE CONTROLLED ON THE INDIVIDUAL COMPONENT DRAWING.	TOTAL NO OF INSPECTIONS REQUIRED	25
	LAST NO. USED	25

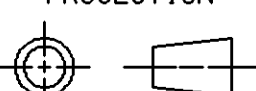

MISSING SYMBOLS		DWG STATUS					ZONE	REVISION HISTORY		AUTH	DR	APVD 1	APVD 2
		DATE	STG	REV	N/P	CHG							
NO MISSING SYMBOL NUMBER		11MY04	R	01	-	-		RELEASED		255265	JBD	JAA	MGR
		08FE05	R	01	AA	-		MAT'L SPEC WAS GM 260M (1018-1022) STEEL; ADDED "THREAD NOTE"		264246	ADK	ADK	MR



NOTES

- UNLESS OTHERWISE SPECIFIED AND/OR INDICATED: DIMENSIONS ARE TO FACE OF VIEW SHOWN AND AUTOMATICALLY ROUNDED BY COMPUTER FOR INSPECTION (SEE MATH MODEL FOR PRECISE DIMENSIONS). FOR ALL OTHER DIMENSIONS NOT SHOWN BUT REQUIRED FOR TOOL BUILD, SEE MATH MODEL FOR PRECISE TOOL PATH DATA.
- HARDNESS TO BE ROCKWELL B 85-105. (TO BE CHECKED ON THREADED END).
- PLATED PER DX551245-P.
- PART MUST BE FREE OF RUST AND OILY GRIT.
- BOLT MUST WITHSTAND 100 IN LB OR 11.3 N-M THREAD STRIP TORQUE.
- USE M7 HEX-HEAD DRIVE SOCKET.
- THIS PART IS NOT CONTROLLED FOR AUTOMATIC FEEDING.
- SCREW POINT MUST BE EITHER FULL OR HALF DOG POINT.

N/A PROCESS SENSITIVE DIMENSION	
DIMENSIONS ENCLOSED IN () INDICATE REFERENCE DIMENSIONS AND NO TOLERANCE LIMITS ARE ESTABLISHED	
DIMENSIONAL RANGE (MM)	CHART 6
FROM 0	> 12
TO 12	
TOLERANCE UNLESS OTHERWISE SPECIFIED	
±0.15 ±0.3	
ANGULAR TOLERANCE ±2°	

DWG TYPE PART DRAWING	
STYLE	
VOLUME (CM³)	DISTR CODE D
UNLESS OTHERWISE SPECIFIED	
THIS DOCUMENT IS IN ACCORDANCE WITH ASME Y14.5M-1994 AS AMENDED BY THE GM GLOBAL DIMENSIONING AND TOLERANCING ADDENDUM - 1997. ALL GEOMETRIC TOLERANCES AND RELATED DATUMS APPLY RFS. RULE #1 PERFECT FORM AT MMC DOES NOT APPLY WHEN RELATIONSHIP BETWEEN FEATURES IS ESTABLISHED BY ORIENTATION OR LOCATION TOLERANCES. SEPARATE POSITION CALLOUTS MAY BE GAGED SEPARATELY, REGARDLESS OF DATUM REFERENCE. ALL DIMENSIONS ARE IN MILLIMETERS	
REFERENCE	
THIRD ANGLE PROJECTION	DO NOT SCALE
	

DELPHI				
DELPHI PACKARD ELECTRIC SYSTEMS WARREN, OH				
DR			DATE	
APVD1	JOSE R.BARRIENTOS		04JN04	
APVD2	J.S. ALVARADO		10JN04	
APVD3	MATTHEW ROUSSEL		16JN04	
APVD4				
APVD5				
SUBSTANCES OF CONCERN AND RECYCLED CONTENT PER DELPHI 10949001				
MATERIAL DX520503				
DRAWING NAME				
MOUN BOLT HEX HD FLG				
DRAWING NUMBER				
15492621				
SIZE A1	SCALE 5:1	FRAME NO 1 OF 1	SHEET NO 1 OF 1	STG R
				REV 01
				N/P AA

Mouser Electronics

Authorized Distributor

Click to View Pricing, Inventory, Delivery & Lifecycle Information:

[Aptiv:](#)
[15492621](#)