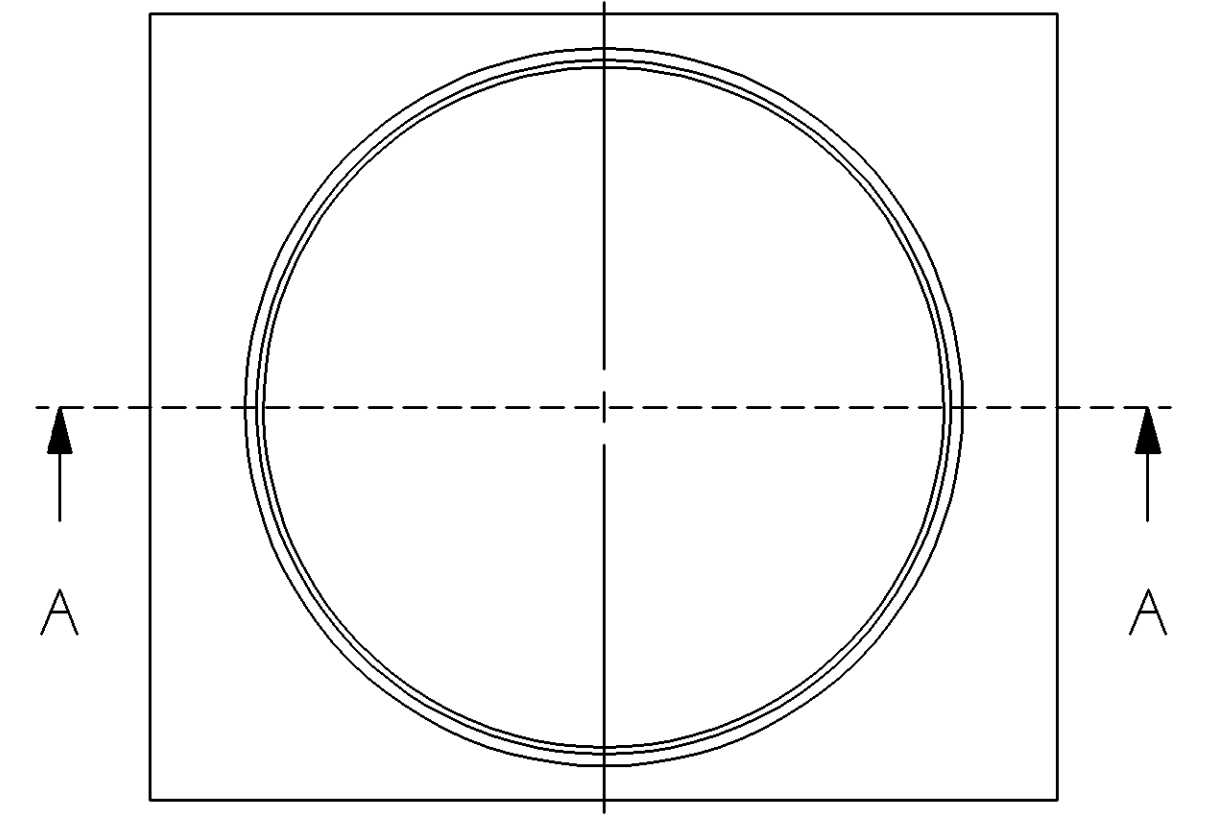
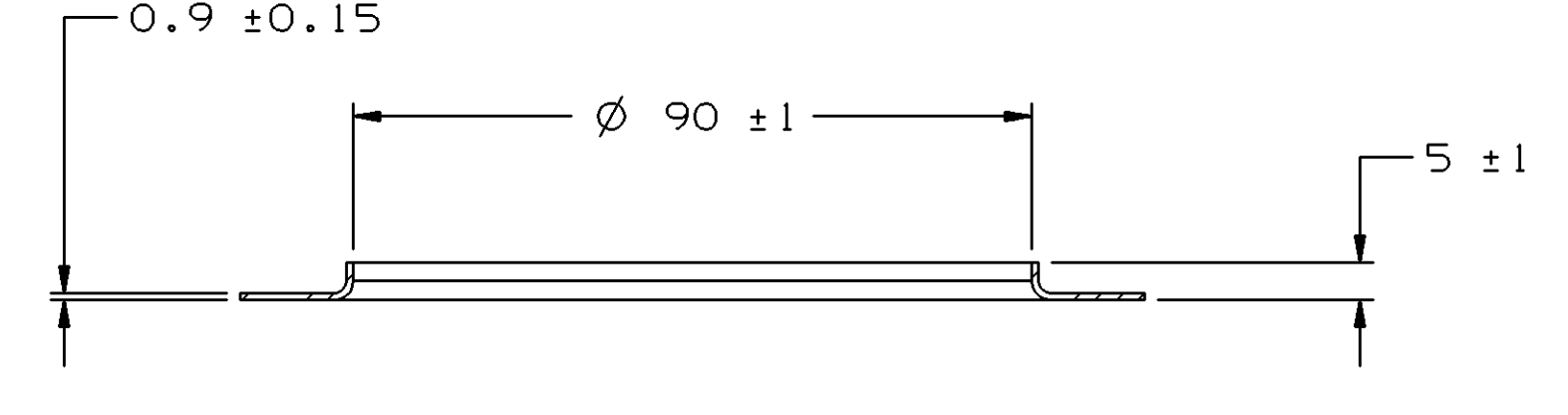
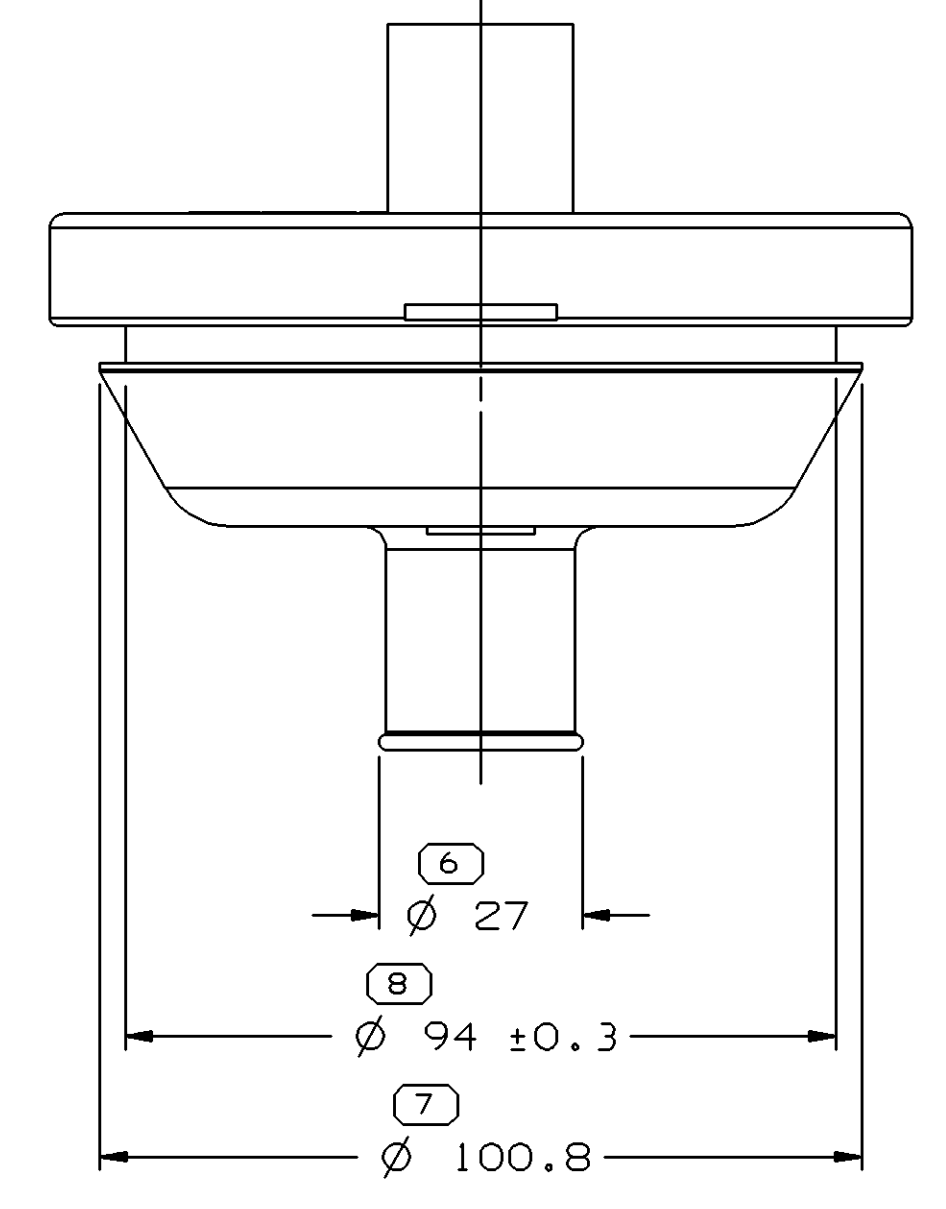


SYMBOL DEFINITION		TOTAL NO OF INSPECTIONS REQUIRED		MISSING SYMBOLS	
A DIMENSION WITHOUT AN INSPECTION REPORT SYMBOL DOES NOT REQUIRE INSPECTION. IT MAY BE CONTROLLED ON THE INDIVIDUAL COMPONENT DRAWING.		14		NO MISSING SYMBOL NUMBER	
		LAST NO. USED	13		

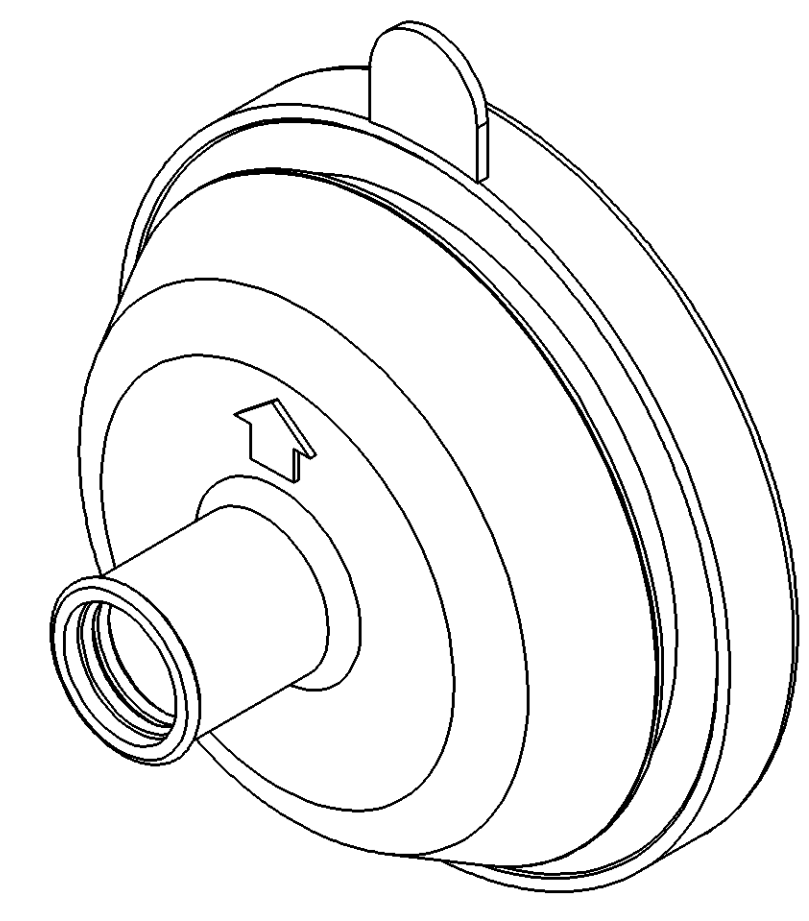
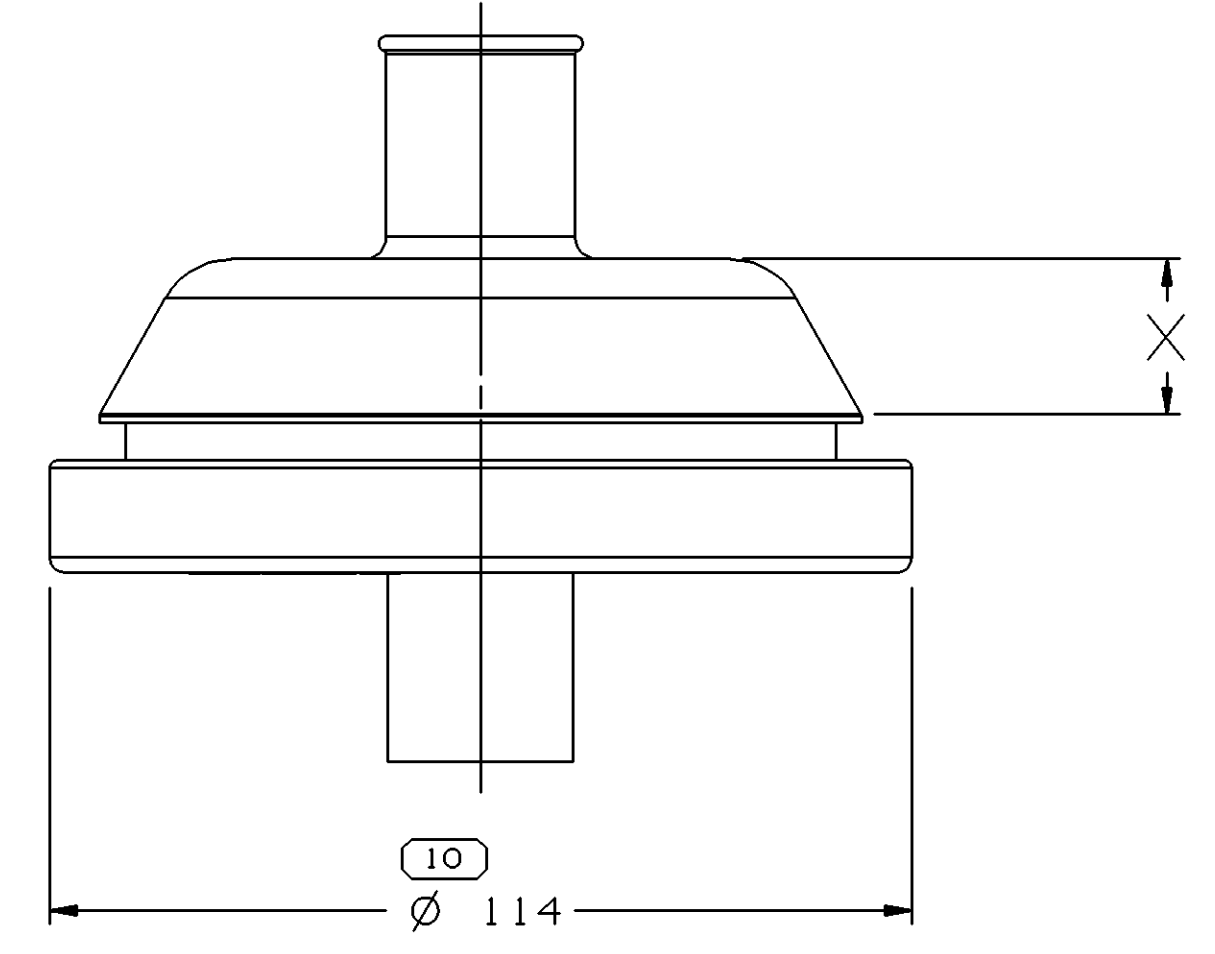
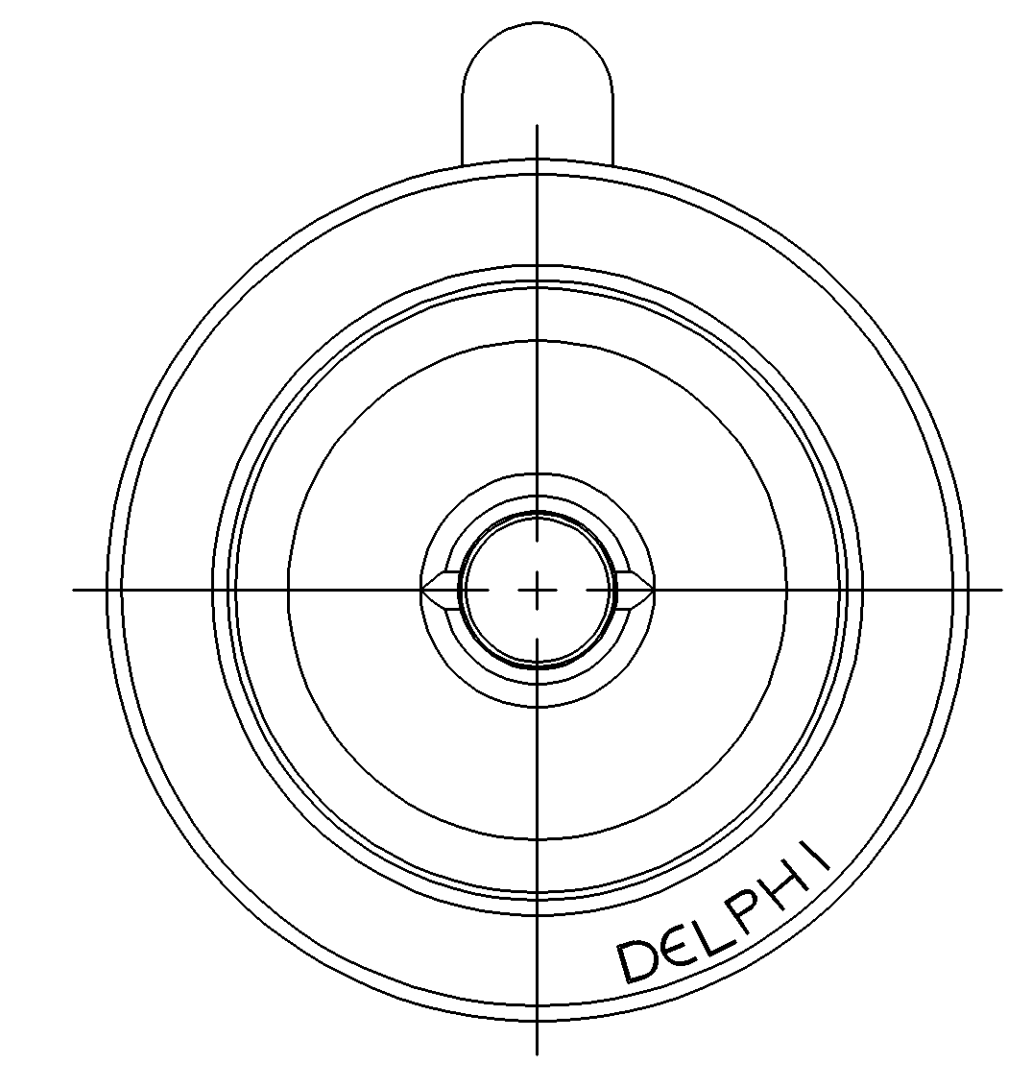
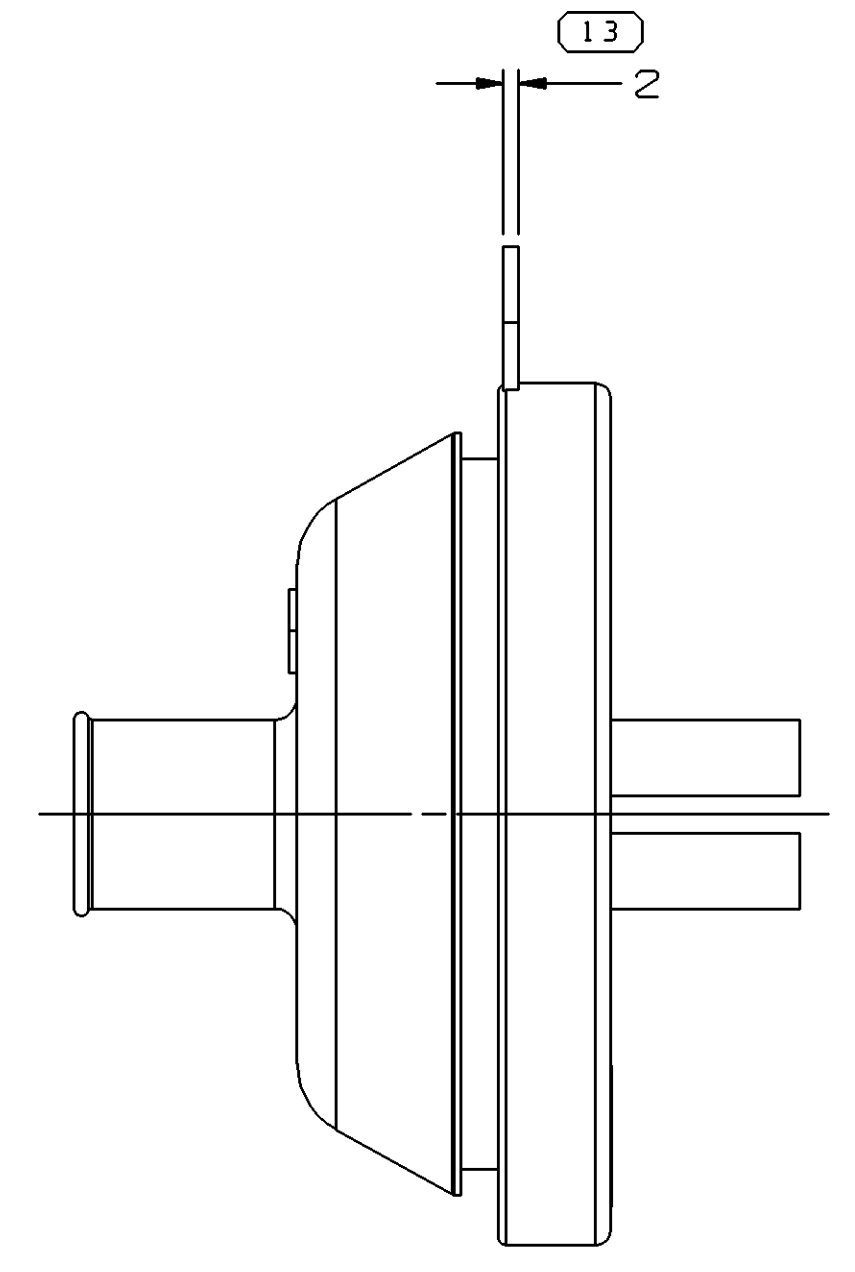
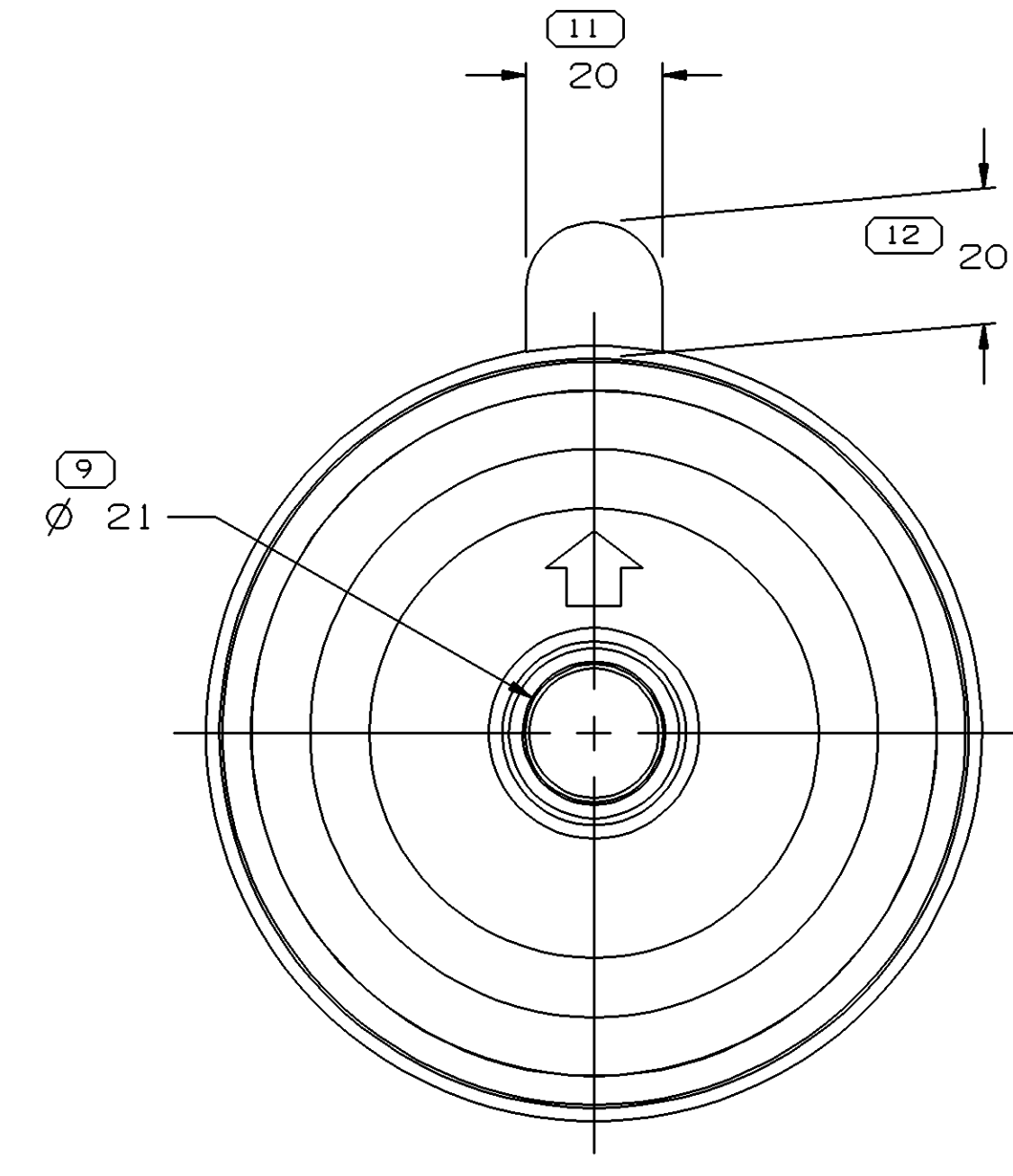
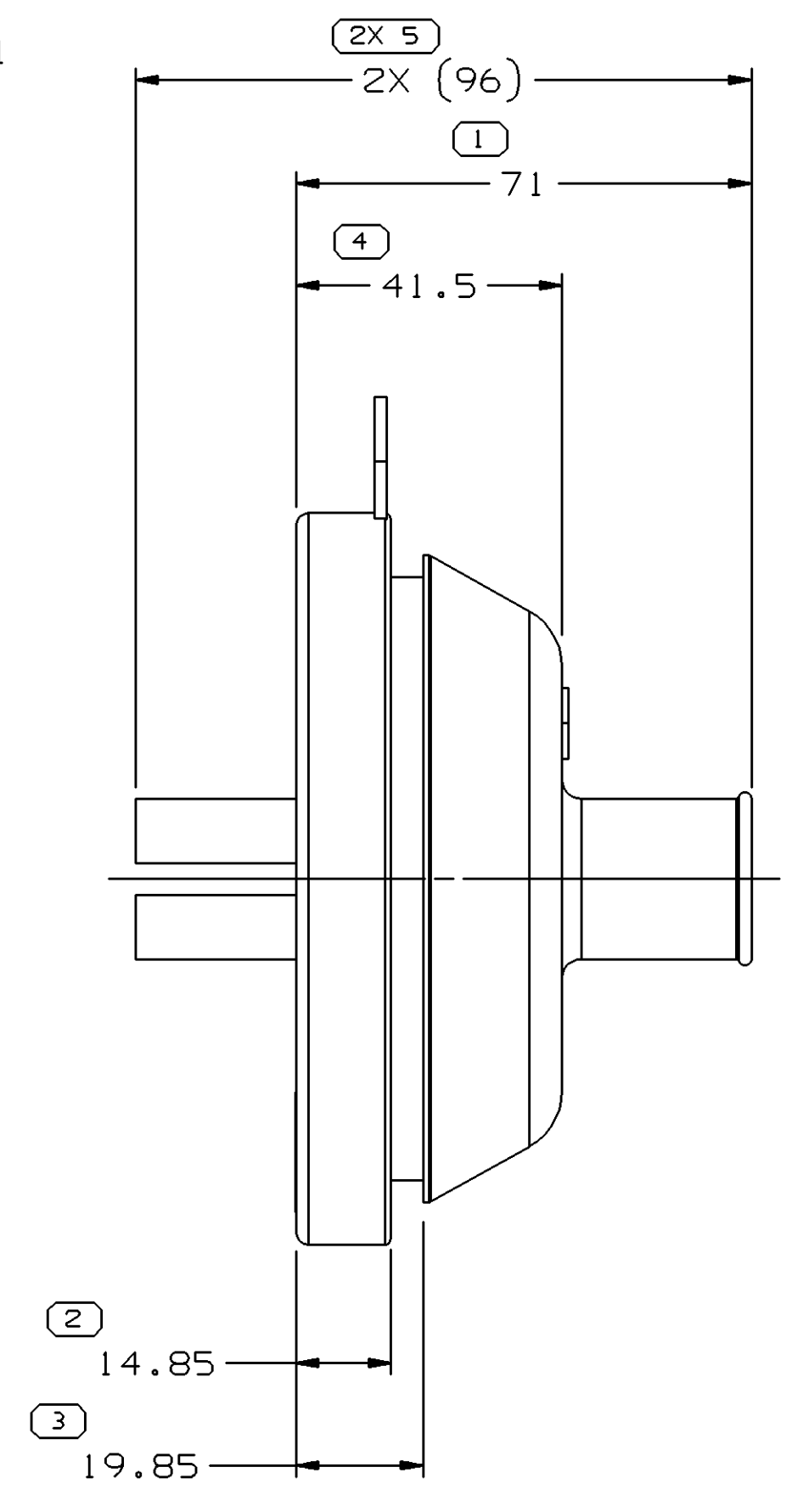
DWO STATUS					REVISION HISTORY			AUTH	DR	APVD	APVD
DATE	STG	REV	W/P	CHG	ZONE						
15MY03	R	01	-	-		RELEASED		240610	TLD	J5	J5
16JN03	R	01	AA	-		UPDATED PDM ATTRIBUTES		242533	TLD	J5	M
21FE05	R	01	AB	-		ADDED PROCESS NOTE 3 & REVISED MAT'L DESCRIPTION		264750	ESH	JVM	WJM



MATING PASS THROUGH

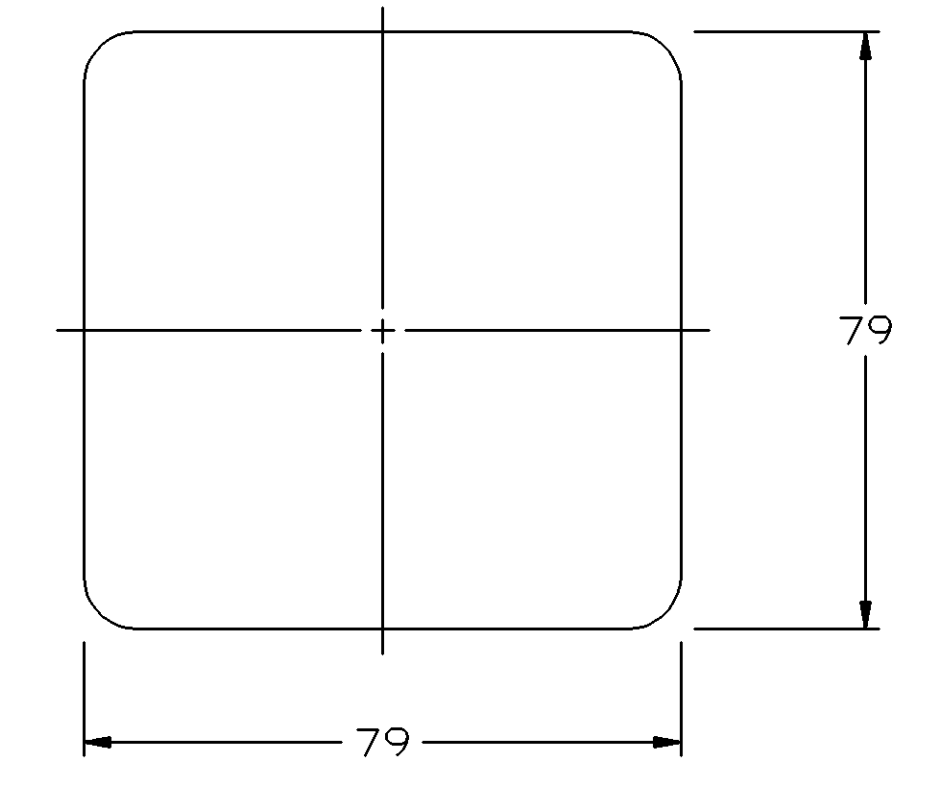


SECTION A-A



PROCESS NOTES

- APPLY UNIFORM COATING OF "EASE OUT 499F" LUBRICANT TO AREA MARKED "X". LUBE MUST BE APPLIED BY BRUSH AND AT FULL STRENGTH FOR BEST RESULTS. MIXING IS RECOMMENDED EVERY 15 MINUTES TO PREVENT SETTLING. COATED PARTS MUST BE THOROUGHLY DRY PRIOR TO PACK OUT.
- USE OF A BLACK LIGHT SOURCE IS RECOMMENDED TO OPTICALLY VERIFY THAT THE COATING IS PRESENT ON THE SURFACE SHOWN.
RECOMMENDED LIGHT SOURCE: LONG WAVE ULTRAVIOLET 365NM.
- THE FOLLOWING NUMBER IS TO BE PUT ON THE PRODUCT DRAWING AS THE MAXIMUM ALLOWABLE STRETCH DIMENSION: 79MM AS MEASURED IN THE FOLLOWING FASHION:



MAXIMUM ALLOWABLE DIMENSION OF STRETCHED GROMMET NECK WHEN USING A 4 BILL SPREADER

NOTES

- UNLESS OTHERWISE SPECIFIED AND/OR INDICATED: DIMENSIONS ARE TO FACE OF VIEW SHOWN AND AUTOMATICALLY ROUNDED BY COMPUTER FOR INSPECTION (SEE MATH MODEL FOR PRECISE DIMENSIONS). FOR ALL OTHER DIMENSIONS NOT SHOWN BUT REQUIRED FOR TOOL BUILD, SEE MATH MODEL FOR PRECISE TOOL PATH DATA.
- (5)X(0.1) DELPHI CORPORATE BRAND TO BE LOCATED ON ANY EXTERIOR SURFACE, PREFERABLY VISIBLE AT FINAL ASSEMBLY. OPTIONAL CONSTRUCTION TO BE "PED" OR NO LOGO.

DWO TYPE		PART DRAWING																		
STYLE		VOLUME (CM³)	DISTR CODE																	
		127.307	D																	
UNLESS OTHERWISE SPECIFIED																				
THIS DOCUMENT IS IN ACCORDANCE WITH ASME Y14.5M-1994 AS AMENDED BY THE 2018 ASME DIMENSIONING AND TOLERANCING ADDENDUM - 1997. ALL GEOMETRIC TOLERANCES AND RELATED DATUM APPL. RULES, IF PERFECT FORM IS UNLESS OTHERWISE SPECIFIED.																				
MATERIAL DOES NOT APPLY WHEN RELATIONSHIP BETWEEN FEATURES IS ESTABLISHED BY ORIENTATION OR LOCATION TOLERANCES. SEPARATE POSITION DATUMS MAY BE GAGED SEPARATELY, REGARDLESS OF DATUM REFERENCE.																				
ALL DIMENSIONS ARE IN MILLIMETERS																				
REFERENCE		THIRD ANGLE PROJECTION																		
<p>(10) PROCESS SENSITIVE DIMENSION</p> <p>DIMENSIONS ENCLOSED IN () INDICATE RETROACTIVE DIMENSIONS AND NO TOLERANCE LIMITS ARE ESTABLISHED</p> <table border="1"> <thead> <tr> <th>DIMENSIONAL RANGE (MM)</th> <th>CHART</th> <th>C</th> </tr> </thead> <tbody> <tr> <td>FROM > 0</td> <td>> 25</td> <td>> 60</td> </tr> <tr> <td>TO ≤ 60</td> <td>80</td> <td>> 80</td> </tr> </tbody> </table> <p>TOLERANCE UNLESS OTHERWISE SPECIFIED</p> <table border="1"> <thead> <tr> <th>±0.3</th> <th>±0.5</th> <th>±0.6</th> <th>±0.75</th> </tr> </thead> <tbody> <tr> <td>ANGULAR TOLERANCE 12°</td> <td></td> <td></td> <td></td> </tr> </tbody> </table>		DIMENSIONAL RANGE (MM)	CHART	C	FROM > 0	> 25	> 60	TO ≤ 60	80	> 80	±0.3	±0.5	±0.6	±0.75	ANGULAR TOLERANCE 12°				<p>DO NOT SCALE</p> <p>USE MATH DATA</p>	
DIMENSIONAL RANGE (MM)	CHART	C																		
FROM > 0	> 25	> 60																		
TO ≤ 60	80	> 80																		
±0.3	±0.5	±0.6	±0.75																	
ANGULAR TOLERANCE 12°																				

DELPHI	
DELPHI PACKARD ELECTRIC SYSTEMS	
WARREN, OH	
DR	DATE
APVD1 TERRI DAVIS	15MY03
APVD2 TERRI DAVIS	15MY03
APVD3 JOE SVETITE	15MY03
APVD4	
APVD5	
SUBSTANCES OF CONCERN AND RECYCLED CONTENT PER DELPHI-A 10949001	
MATERIAL M4433002	
DRAWING NAME	
GROM	
DRAWING NUMBER	
15467395	
SIZE	SCALE
A0	1:1
FRAME NO	SHEET NO
1 OF 1	1 OF 1
REV	REV
01	01

Mouser Electronics

Authorized Distributor

Click to View Pricing, Inventory, Delivery & Lifecycle Information:

[Aptiv:](#)

[15467395](#)