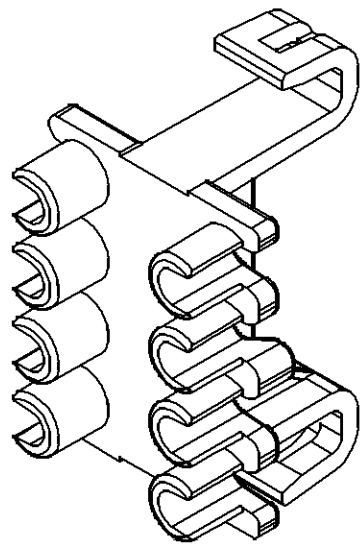
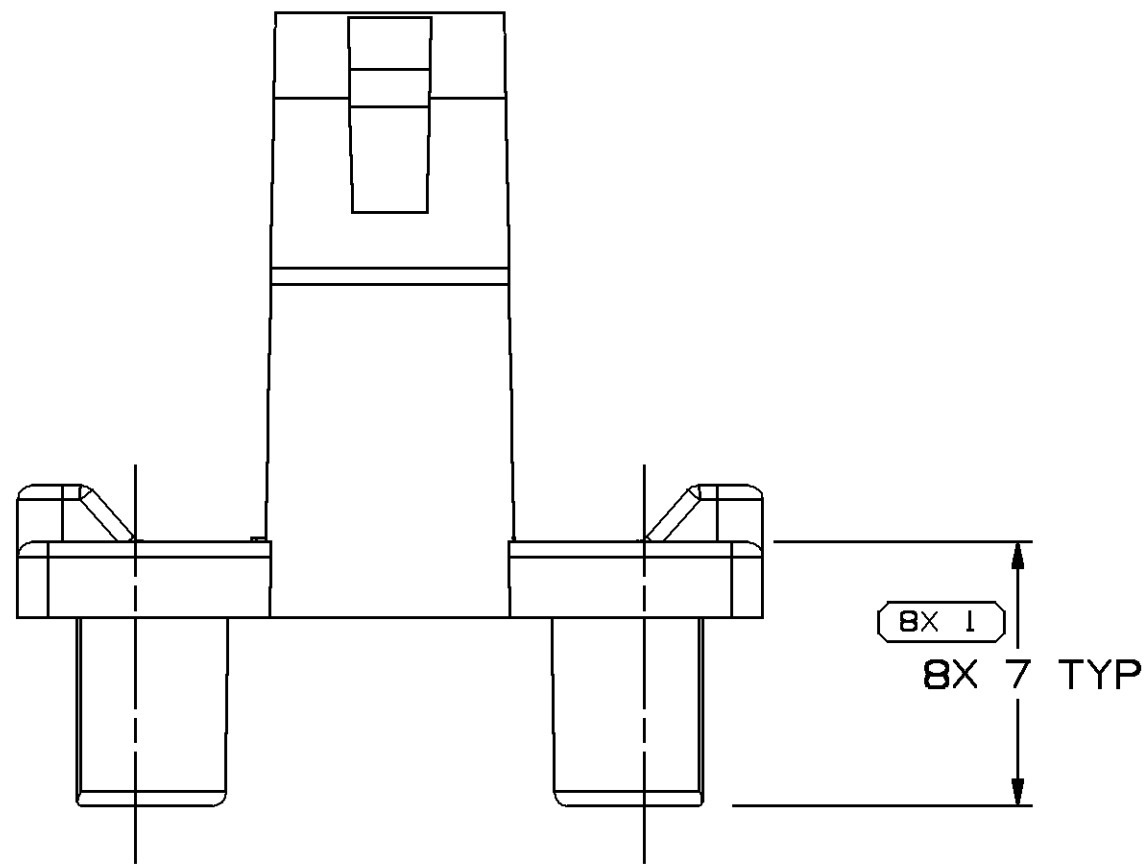


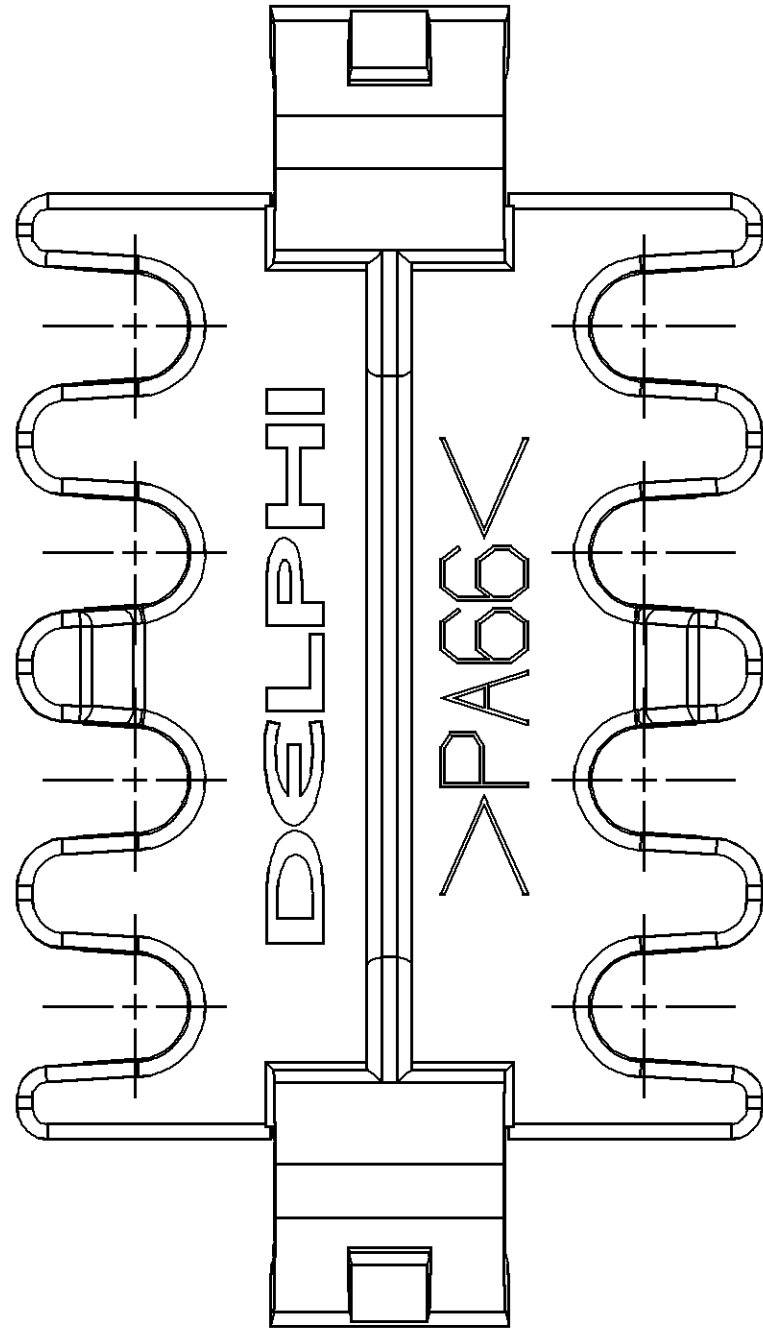
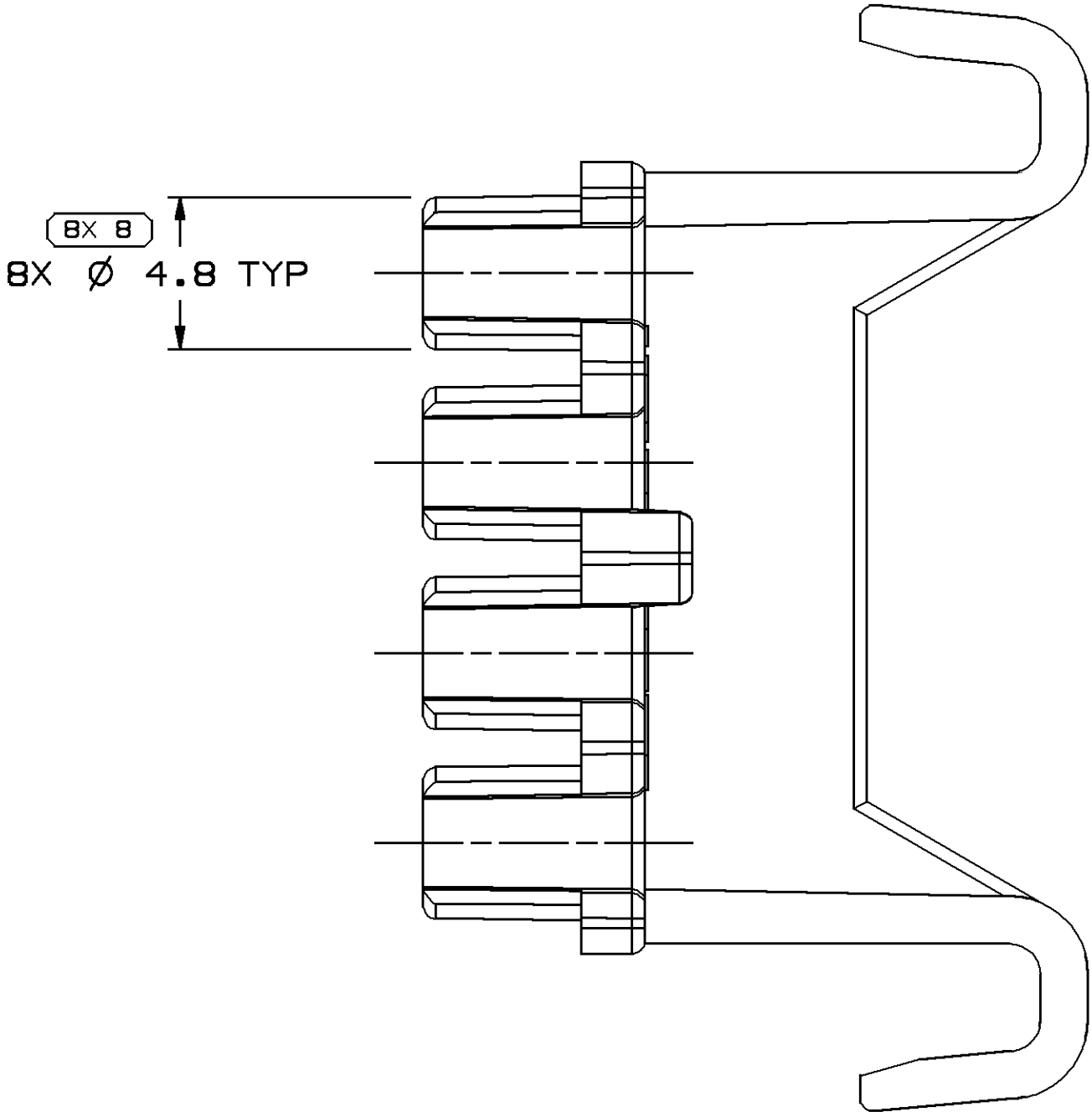
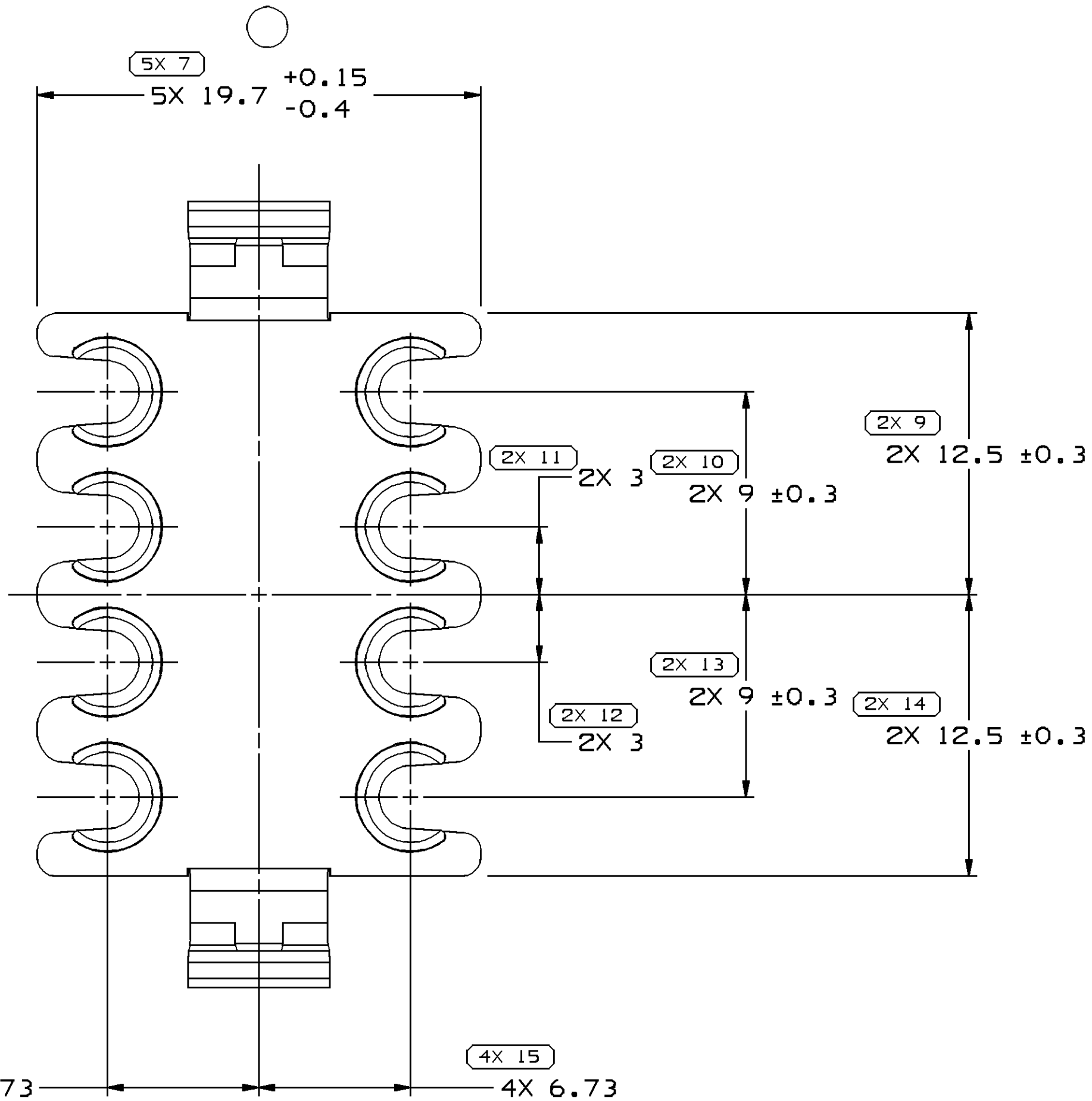
SYMBOL DEFINITION	
A DIMENSION WITHOUT AN INSPECTION REPORT SYMBOL ○ DOES NOT REQUIRE INSPECTION. IT MAY BE CONTROLLED ON THE INDIVIDUAL COMPONENT DRAWING.	TOTAL NO. OF INSPECTIONS REQUIRED
	41
	LAST NO. USED
	16

MISSING SYMBOLS
2-6

DWG STATUS					ZONE		REVISION HISTORY		AUTH	DR	APVD	APVD
DATE	STG	REV	N/P	CHG							1	2
03N006	R	01	-	-			RELEASED		286552	RH	RH	LM
14DE06	R	01	AA	-			5X 19.7 +0.15/-0.4 WAS 5X 19.7		287883	RMG	EVV	LJM

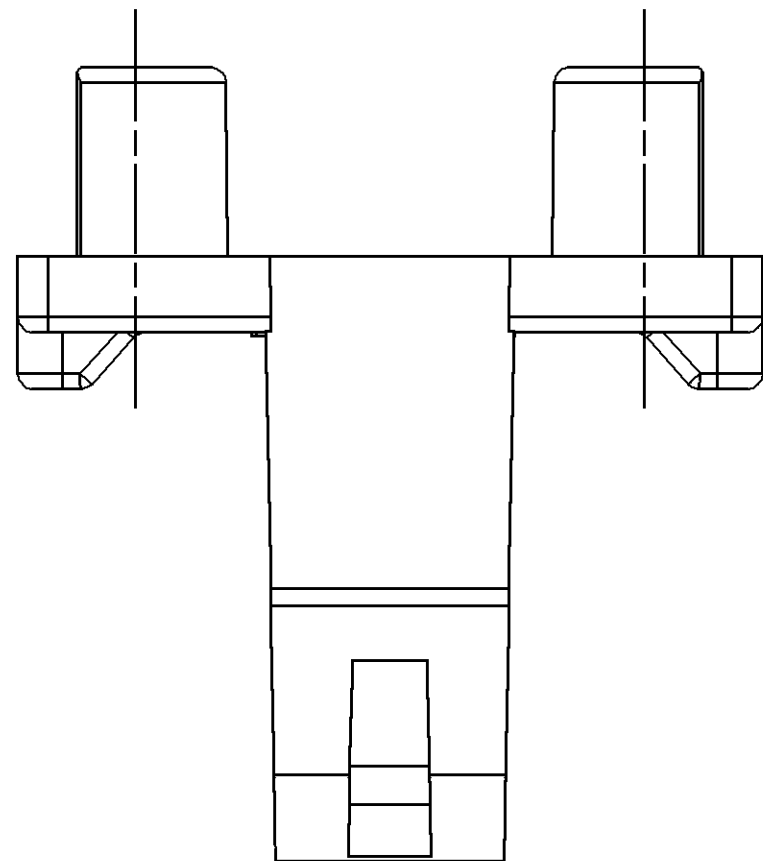


VIEW SCALE DOES NOT  
REFLECT ACTUAL PART SIZE



NOTES

- UNLESS OTHERWISE SPECIFIED AND/OR INDICATED:  
DIMENSIONS ARE TO FACE OF VIEW SHOWN AND  
AUTOMATICALLY ROUNDED BY COMPUTER FOR INSPECTION  
(SEE MATH MODEL FOR PRECISE DIMENSIONS). FOR ALL  
OTHER DIMENSIONS NOT SHOWN BUT REQUIRED FOR TOOL  
BUILD, SEE MATH MODEL FOR PRECISE TOOL PATH DATA.
- MATERIAL RECYCLING CODE PER ISO 11469. (2.3)X(0.1) CHARACTERS  
AS SHOWN TO BE LOCATED ON ANY EXTERIOR SURFACE.
- REFERENCE MATING COMPONENTS OR EQUIVALENT:  
CONNECTOR 15490621, 15490622.
- (1.5)X(0.1) DELPHI CORPORATE BRAND TO BE LOCATED ON ANY  
EXTERIOR SURFACE, PREFERABLY VISIBLE AT FINAL ASSEMBLY.  
OPTIONAL CONSTRUCTION TO BE "PED".



DWG TYPE PART DRAWING	
STYLE	
VOLUME (CM³) 1.718	DISTR CODE D
UNLESS OTHERWISE SPECIFIED THIS DOCUMENT IS IN ACCORDANCE WITH ASME Y14.5M-1994 AS AMENDED BY THE 2001 GLOBAL DIMENSIONING AND TOLERANCING ADDENDUM-2001. SEPARATE PATTERNS OF FEATURES MAY BE GAGED SEPARATELY REGARDLESS OF DATUM REFERENCES.	
ALL DIMENSIONS ARE IN MILLIMETERS	
REFERENCE	
THIRD ANGLE PROJECTION	DO NOT SCALE USE MATH DATA

DELPHI	
DELPHI PACKARD ELECTRIC SYSTEMS WARREN, OH	
DR	DATE
APVD1 ROBERT HURD	03N006
APVD2 ROBERT HURD	03N006
APVD3 LISA MCCLEARN	08N006
APVD4	
APVD5	
SUBSTANCES OF CONCERN AND RECYCLED CONTENT PER DELPHI 10949001	
MATERIAL M3592024 PA66 HS 1M CRM	
DRAWING NAME LOCK SECONDARY TPA/SEAL CRM	
DRAWING NUMBER 13609626	
SIZE A1	SCALE 5:1
FRAME NO 1 OF 1	SHEET NO 1 OF 1
STG R	REV 01
N/P AA	

DIMENSIONAL RANGE (MM)												CHART	ET
FROM	> 0	> 20	> 30	> 70	> 100	> 150	> 200	> 250	> 300	> 400			
TO	20	30	70	100	150	200	250	300	400				
TOLERANCE UNLESS OTHERWISE SPECIFIED													
[±0.15] [±0.2] [±0.3] [±0.4] [±0.5] [±0.6] [±0.8] [±1] [±1.2]													
ANGULAR TOLERANCE ±2°													

# Mouser Electronics

Authorized Distributor

Click to View Pricing, Inventory, Delivery & Lifecycle Information:

[Aptiv:](#)  
[13609626](#)