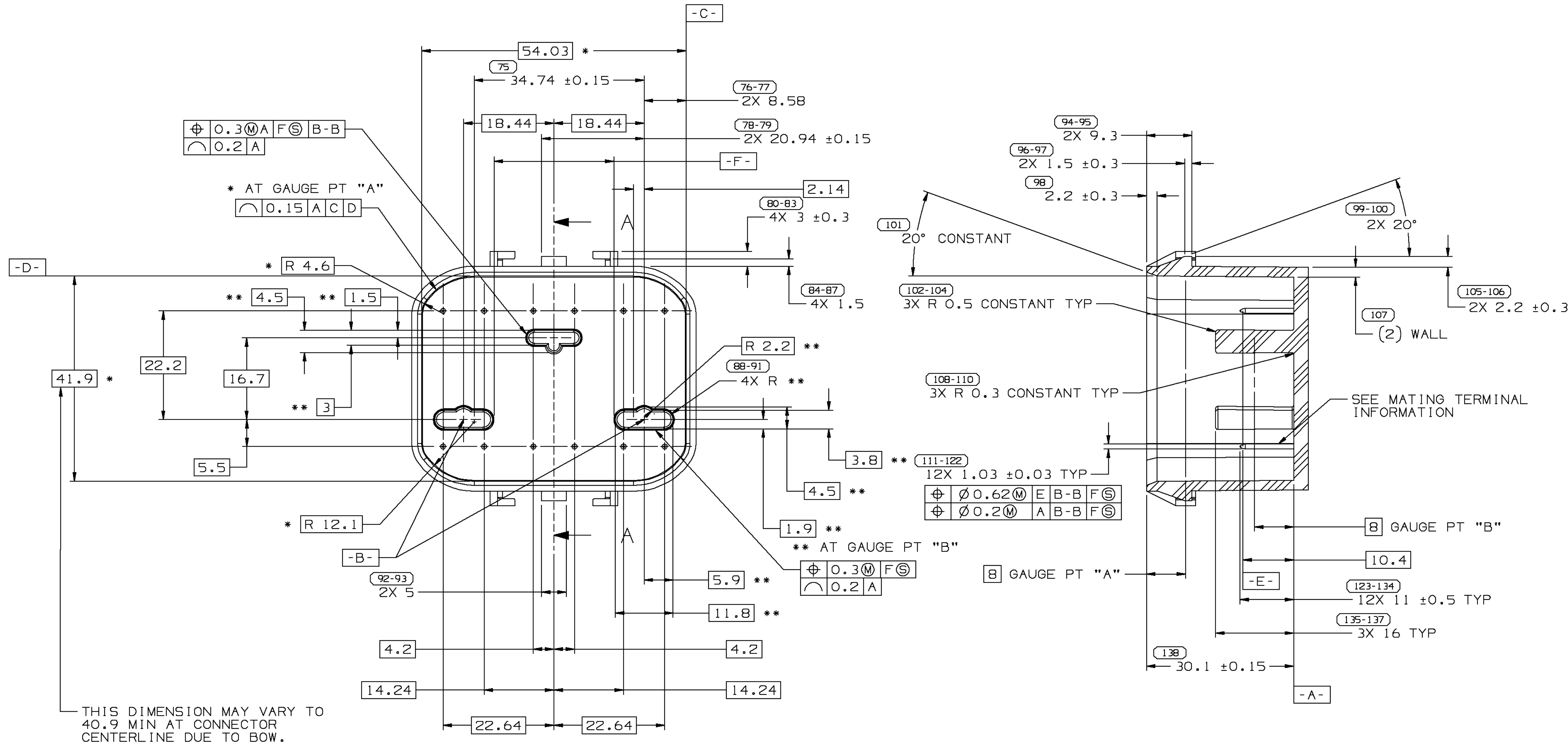


DWG STATUS					ZONE	REVISION HISTORY	AUTH	DR	APVD 1	APVD 2
DATE	STG	REV	N/P	CHG						
17AP03	R	F2	-	-	CLEARED REV COL, MAT'L SPEC WAS R0071754, 45.7 \pm 0.15/-0.3 WAS 45.7 \pm 0.15, 57.56 \pm 0.15/-0.4 WAS 57.56 \pm 0.15 AND ADDED NOTES (2 PLCS)	238861	CMZ	RH	GO	

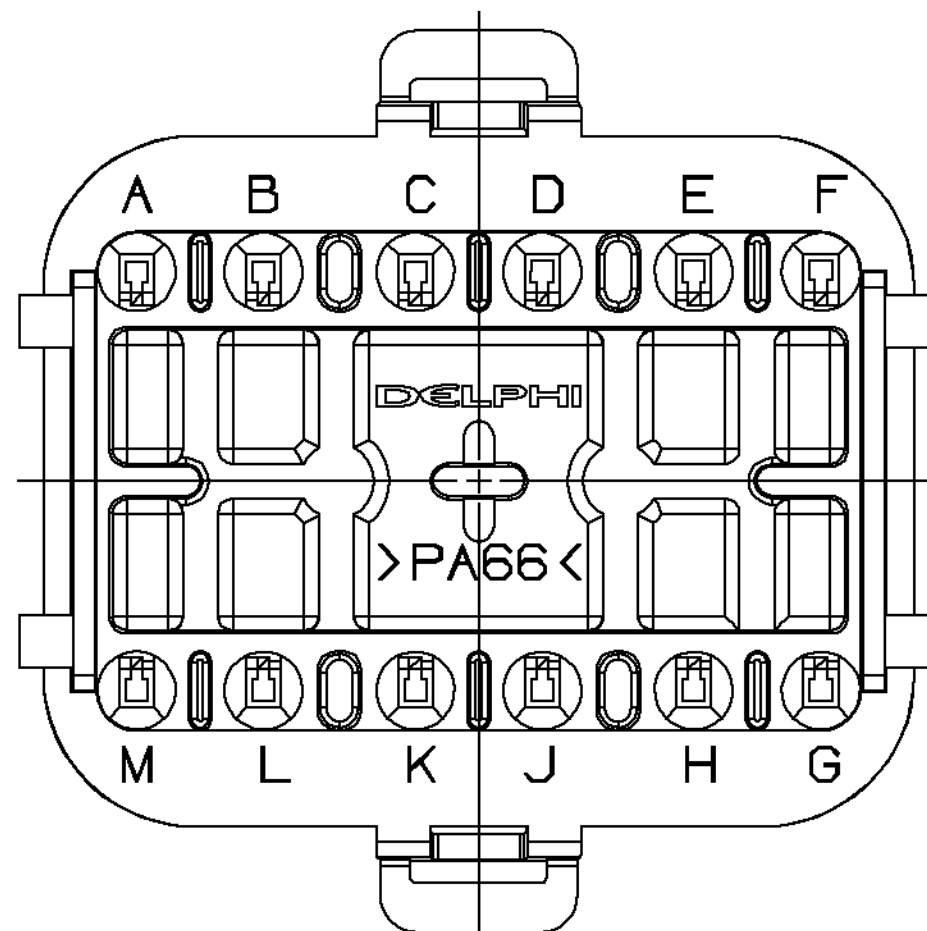
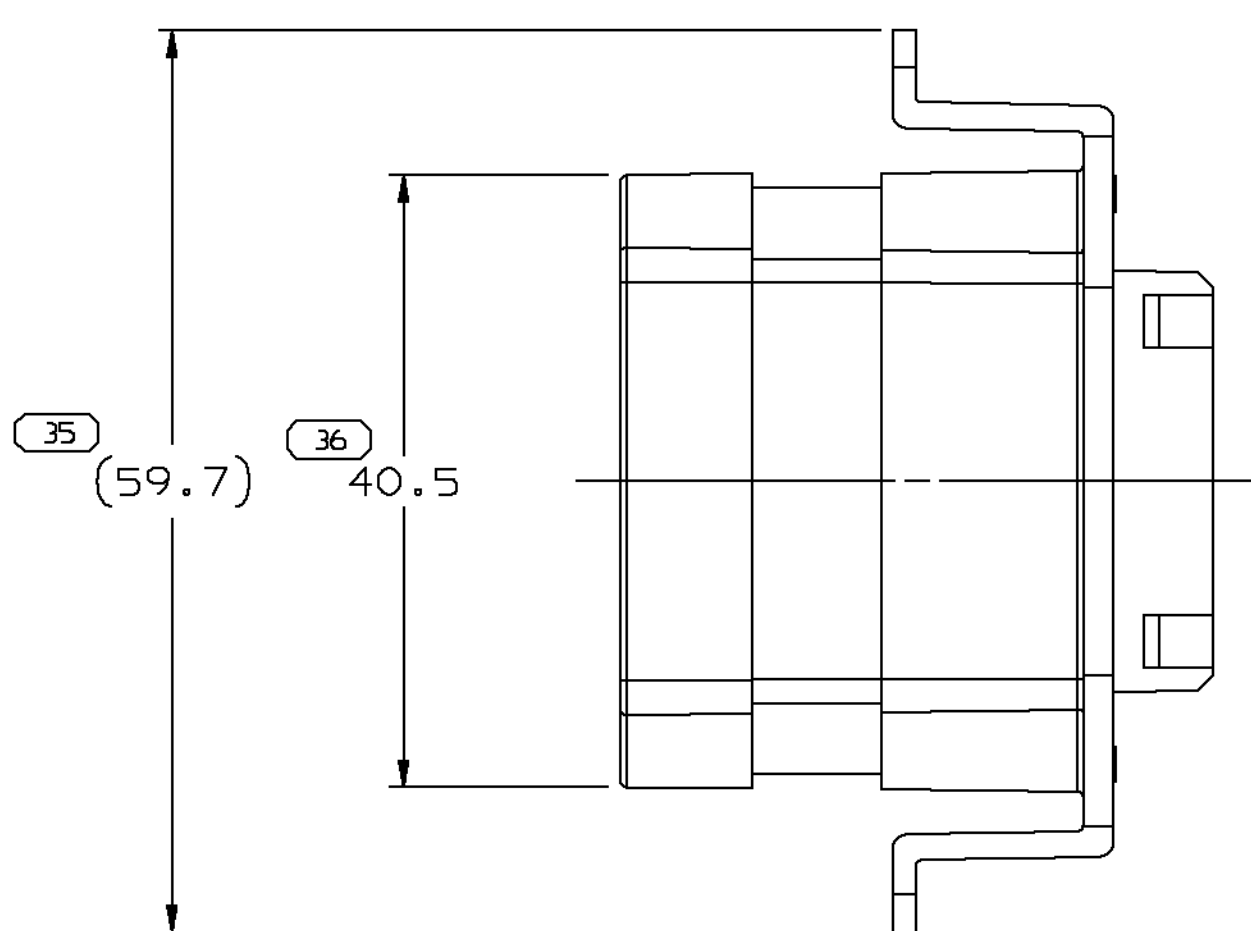
MATING TERMINAL INFORMATION



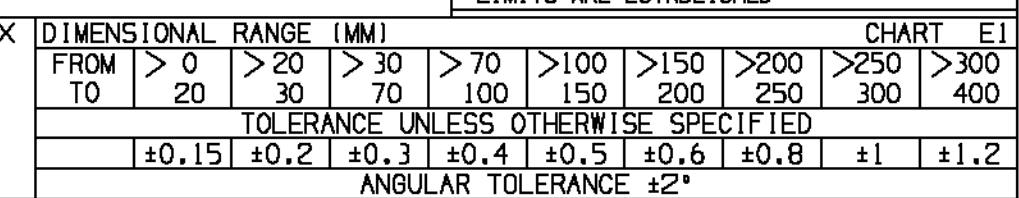
SECTION A - A

MATING PART INFORMATION

INSPECTION SYMBOLS SHOWN IN THESE
VIEWS ARE FOR REFERENCE ONLY.



5. MATERIAL RECYCLING CODE >PA66< PER SAE J1344. (2.31X(0.1) RAISED CHARACTERS AS SHOWN TO BE LOCATED ON ANY EXTERIOR SURFACE. OPTIONAL CONSTRUCTION TO BE NO MATERIAL RECYCLING CODE.



<h1 style="text-align: center;">DELPHI</h1> <p style="text-align: center;">DELPHI PACKARD ELECTRIC SYSTEMS WARREN, OH</p>							
DR A. LASES						DATE	
APV01 A. LASES						28AP95	
APV02 MANUEL VEGA						28AP95	
APV03						02MY95	
APV04							
APV05							
SUBSTANCES OF CONCERN AND RECYCLED CONTENT PER DELPHI 10949001.							
MATERIAL M3592001 - PA66 HS 1M BLK							
DRAWING NO NAME							
CONN 12F MIC/P 100							
DRAWING NUMBER							
<div style="font-size: 2em;">12177083</div>							
SIZE	SCALE	FRAME	SHEET	REV	STG	REV	N/P
AO	2:1	1 OF 1	1 OF 1		F1	F2	

Mouser Electronics

Authorized Distributor

Click to View Pricing, Inventory, Delivery & Lifecycle Information:

[Delphi Connection Systems:](#)

[12177083](#)