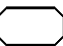
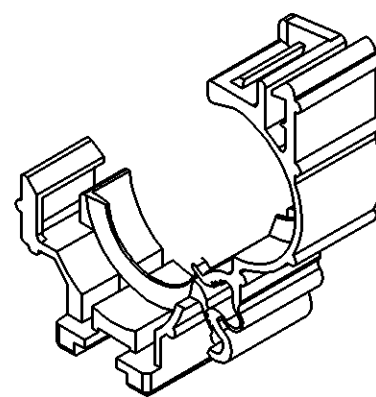
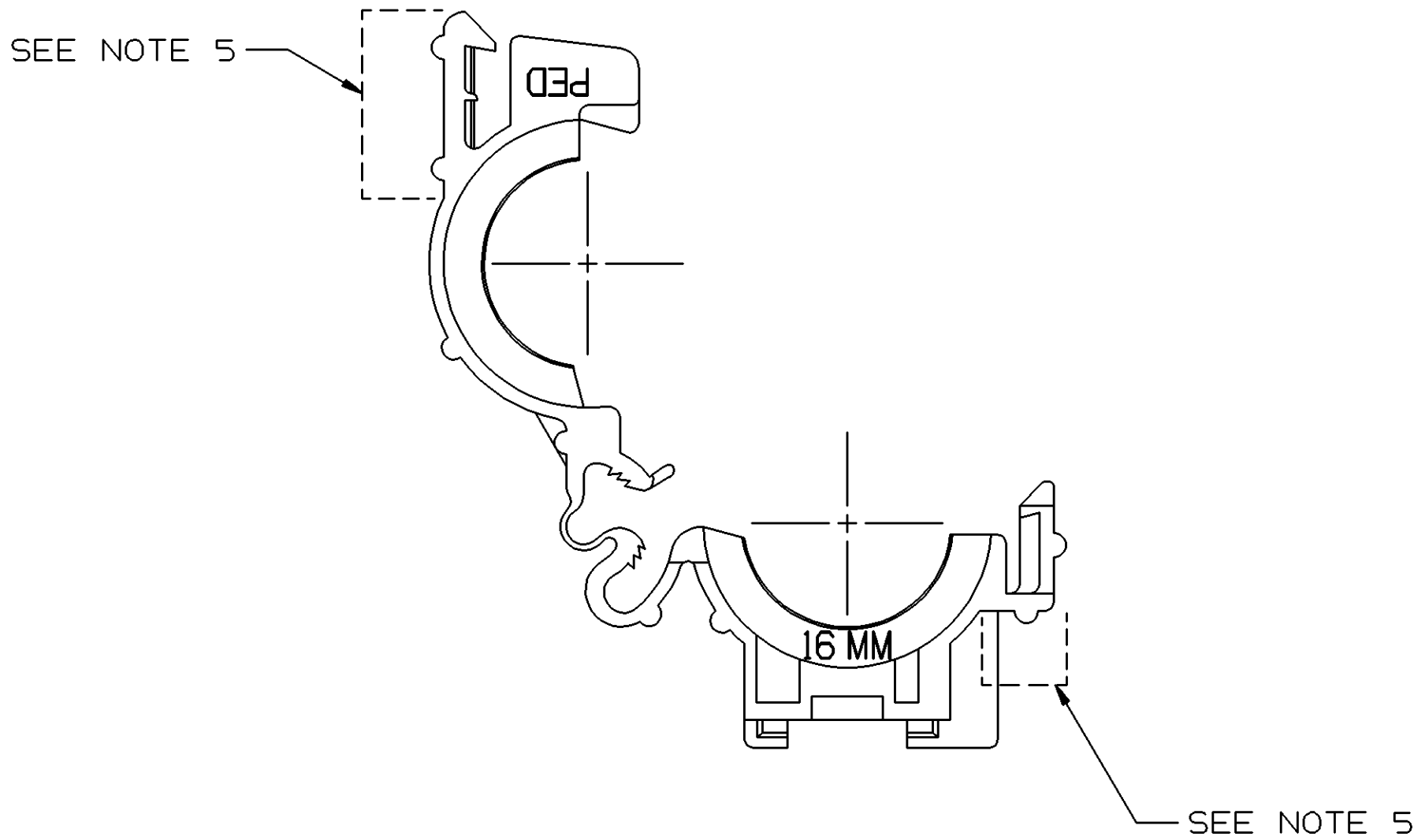
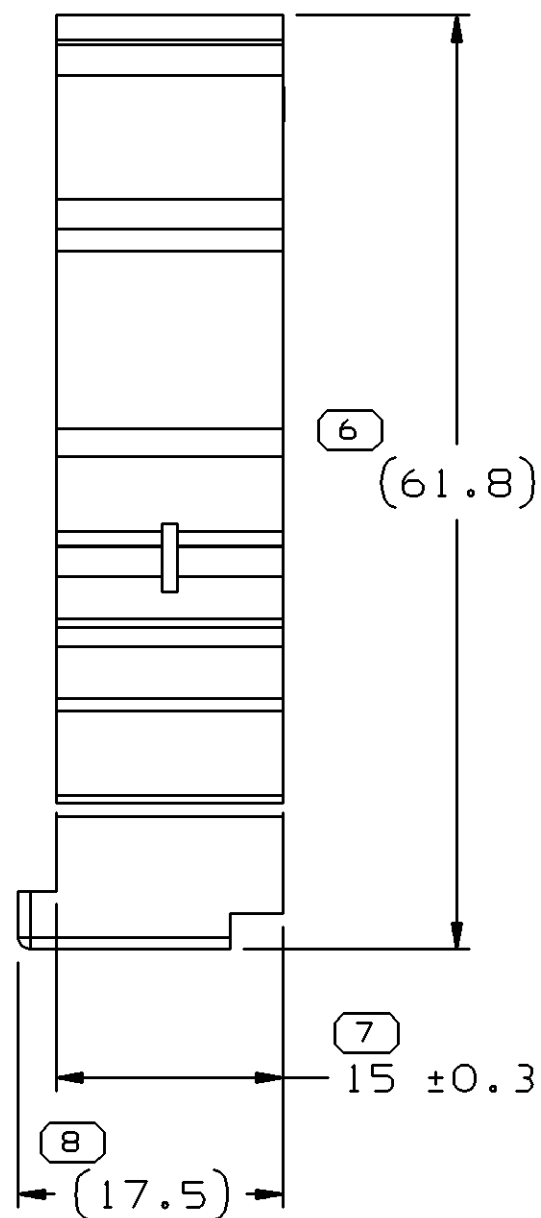
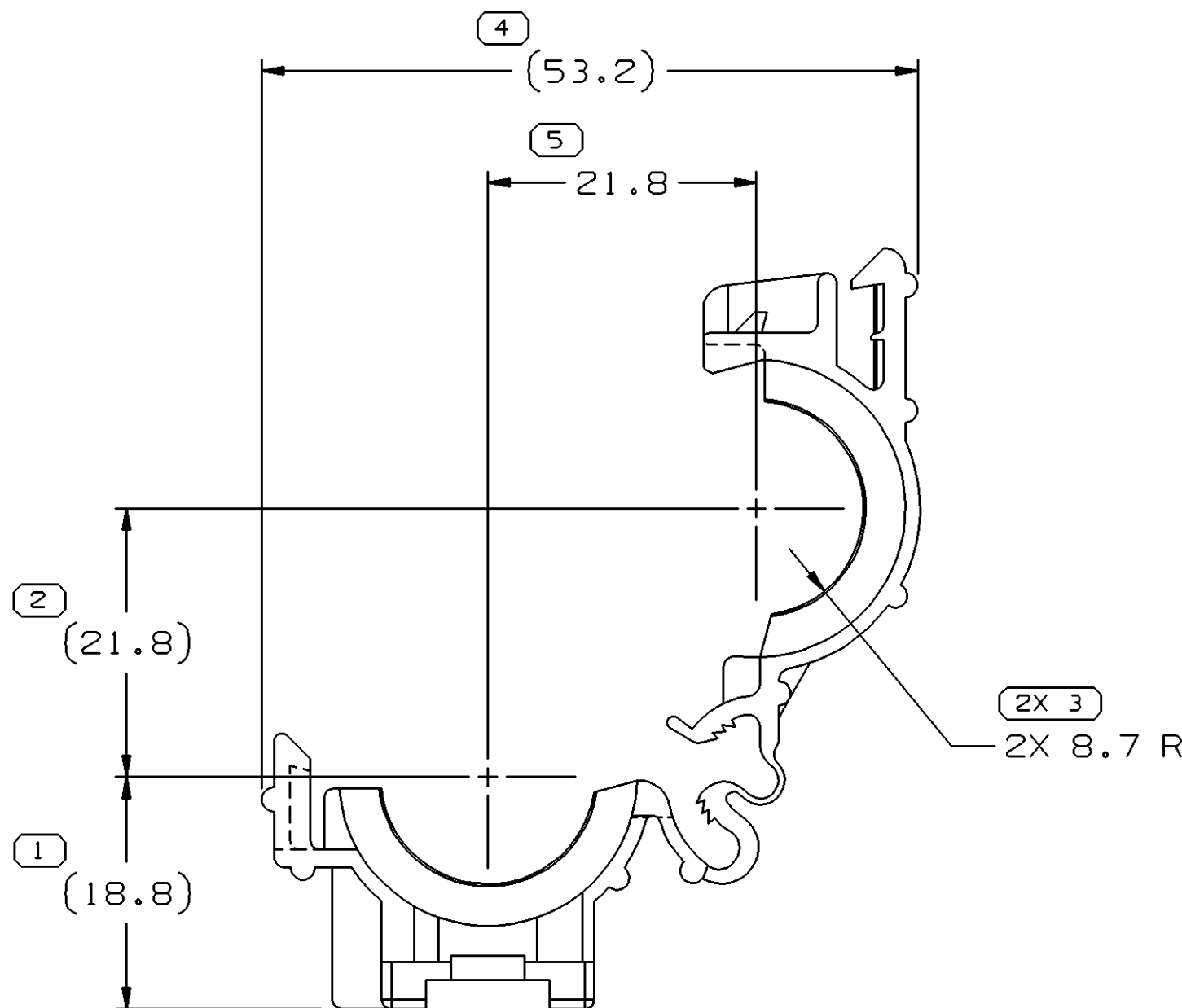
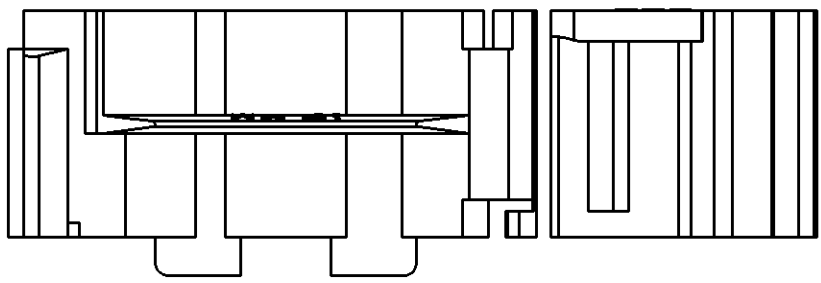


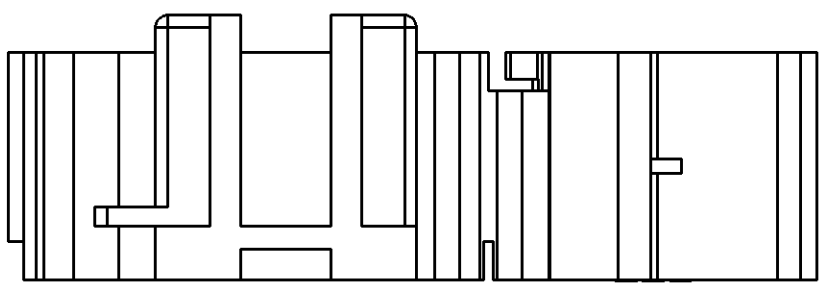
SYMBOL DEFINITION		
A DIMENSION WITHOUT AN INSPECTION REPORT SYMBOL  DOES NOT REQUIRE INSPECTION. IT MAY BE CONTROLLED ON THE INDIVIDUAL COMPONENT DRAWING.	TOTAL NO OF INSPECTIONS REQUIRED	9
	LAST NO. USED	8

DWG STATUS					ZONE	REVISION HISTORY	AUTH	DR	APVD 1	APVD 2
DATE	STG	REV	N/P	CHG						
27JA95		A				PID CREATED	950012	TM	TM	
08FE95		A1				PID UPDATED	950017	ALM	DLB	
05AP95		A2				WAS PE057845 & RELEASED	950005	CRM	DLB	
21JL95		B				MATERIAL WAS R0067547	167436	EMB	DLB	
18SE95		B1				6900 WAS 6901	950004	MAC	JPR	
29N095		B2				REVISED	169794	EML	RPC	
26OC04	R	B3	-	-		MATERIAL WAS R0071754	260515	MJM	MJM	ET

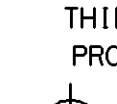




NOTES

- UNLESS OTHERWISE SPECIFIED AND/OR INDICATED: DIMENSIONS ARE TO FACE OF VIEW SHOWN AND AUTOMATICALLY ROUNDED BY COMPUTER FOR INSPECTION (SEE MATH MODEL FOR PRECISE DIMENSIONS). FOR ALL OTHER DIMENSIONS NOT SHOWN BUT REQUIRED FOR TOOL BUILD, SEE MATH MODEL FOR PRECISE TOOL PATH DATA.
- MATERIAL RECYCLING CODE PER SAE J1344. (2.3)X(0.1) RAISED CHARACTERS AS SHOWN TO BE LOCATED ON ANY EXTERIOR SURFACE. OPTIONAL CONSTRUCTION TO BE NO MATERIAL RECYCLING CODE.
- REFERENCE MATING COMPONENTS OR EQUIVALENT: METAL CLIP 12089934 THIS PART DESIGNED TO ACCEPT 16MM CONVOLUTED CONDUIT
- (2.3)X(0.1) RAISED DELPHI CORPORATE BRAND TO BE LOCATED ON ANY EXTERIOR SURFACE, PREFERABLY VISIBLE AT FINAL ASSEMBLY. OPTIONAL CONSTRUCTION TO BE "PED" OR NO LOGO.
- NO PROTRUDING GATES, SHARP EDGES OR PROTRUSSIONS ALLOWED IN THESE AREAS.



DIMENSIONAL RANGE (MM)											
FROM	> 0	> 20	> 30	> 70	> 100	> 150	> 200	> 250	> 300	> 400	
TO	20	30	70	100	150	200	250	300	400		
TOLERANCE UNLESS OTHERWISE SPECIFIED											
ANGULAR TOLERANCE ±2°											

DWG TYPE		PART DRAWING	
STYLE			
VOLUME (CM³)		DISTR CODE	
4.615		D	
UNLESS OTHERWISE SPECIFIED			
THIS DOCUMENT IS IN ACCORDANCE WITH ASME Y14.5M-1994 AS AMENDED BY THE GM GLOBAL DIMENSIONING AND TOLERANCING ADDENDUM - 1997. ALL GEOMETRIC TOLERANCES AND RELATED DATUMS APPLY RFS. RULE #1 PERFECT FORM AT MMC1 DOES NOT APPLY WHEN RELATIONSHIP BETWEEN FEATURES IS ESTABLISHED BY ORIENTATION OR LOCATION TOLERANCES. SEPARATE POSITION CALLOUTS MAY BE GAGED SEPARATELY, REGARDLESS OF DATUM REFERENCE. ALL DIMENSIONS ARE IN MILLIMETERS			
REFERENCE			
THIRD ANGLE PROJECTION		DO NOT SCALE	
			
		USE MATH DATA	
			

DELPHI				
DELPHI PACKARD ELECTRIC SYSTEMS WARREN, OH				
DR R. KEEN			DATE	
APVD1 T. MORELLO			27JA95	
APVD2 T. MORELLO			27JA95	
APVD3 A. HERRMANN			27JA95	
APVD4				
APVD5				
SUBSTANCES OF CONCERN AND RECYCLED CONTENT PER DELPHI 10949001				
MATERIAL M3592001 PA66 HS IM BLK				
DRAWING NAME MOUN CLIP CDT 16MM SLOT				
DRAWING NUMBER 12176838				
SIZE A1	SCALE 2:1	FRAME NO 1 OF 1	SHEET NO 1 OF 1	STG R
				REV B3
				N/P -

Mouser Electronics

Authorized Distributor

Click to View Pricing, Inventory, Delivery & Lifecycle Information:

[Aptiv:](#)
[12176838](#)