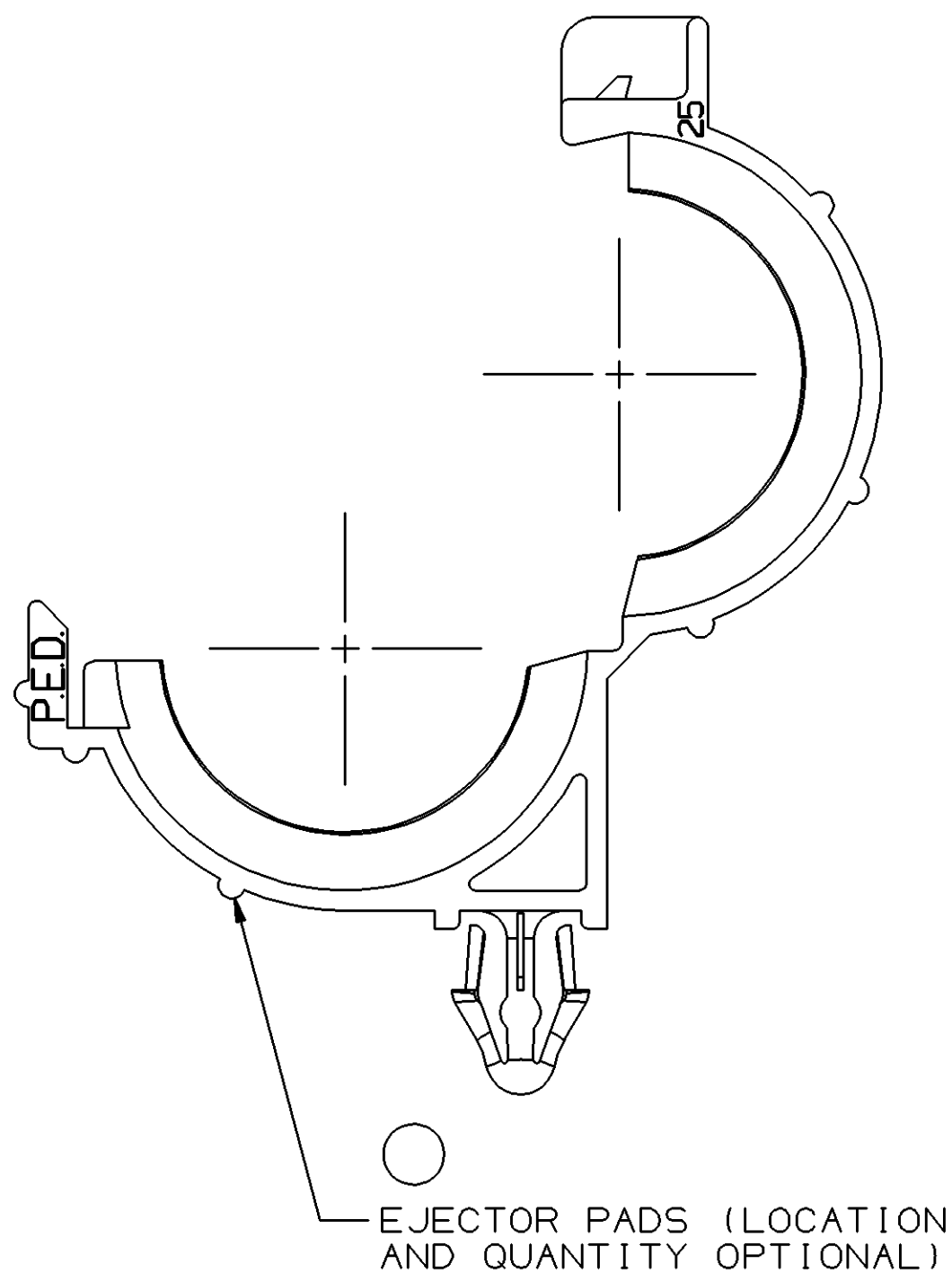
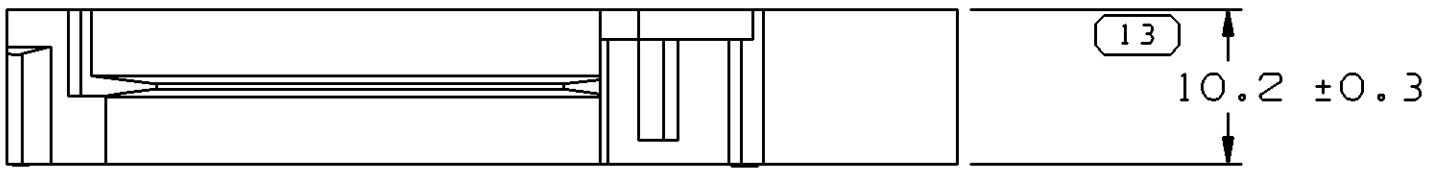
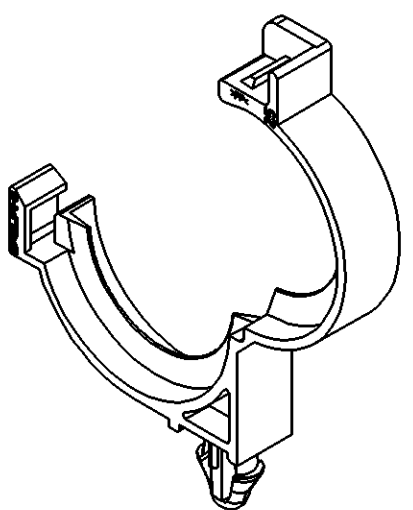
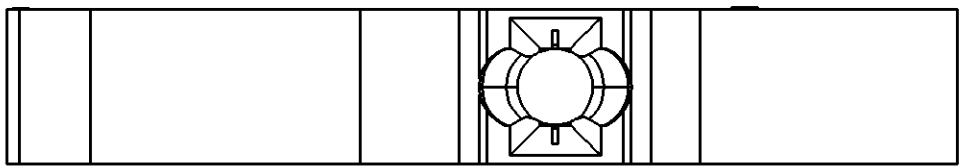
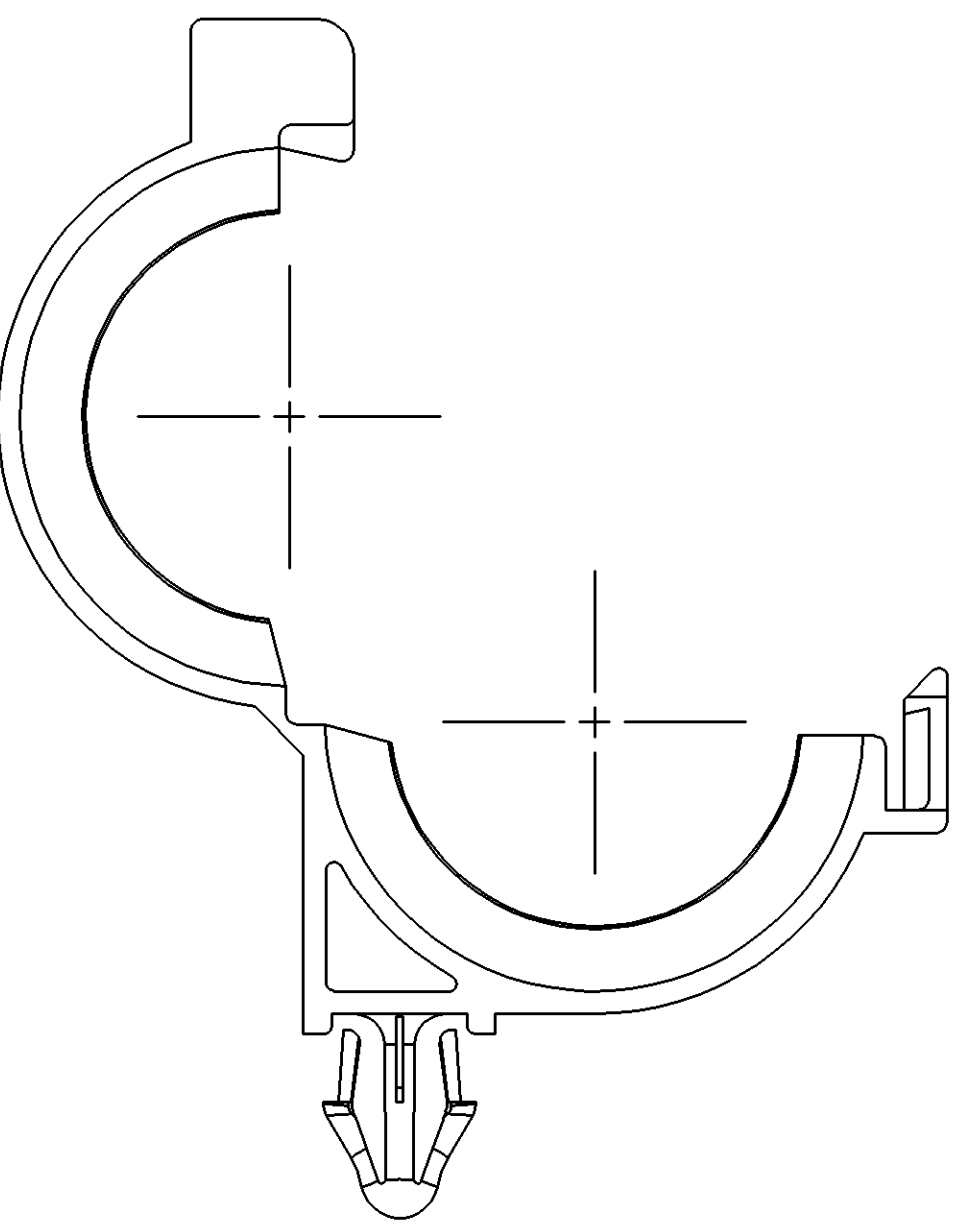
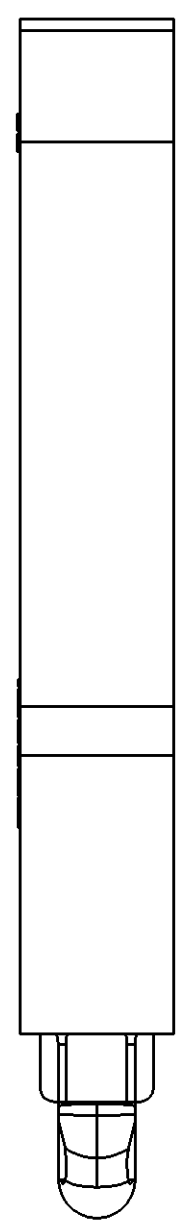
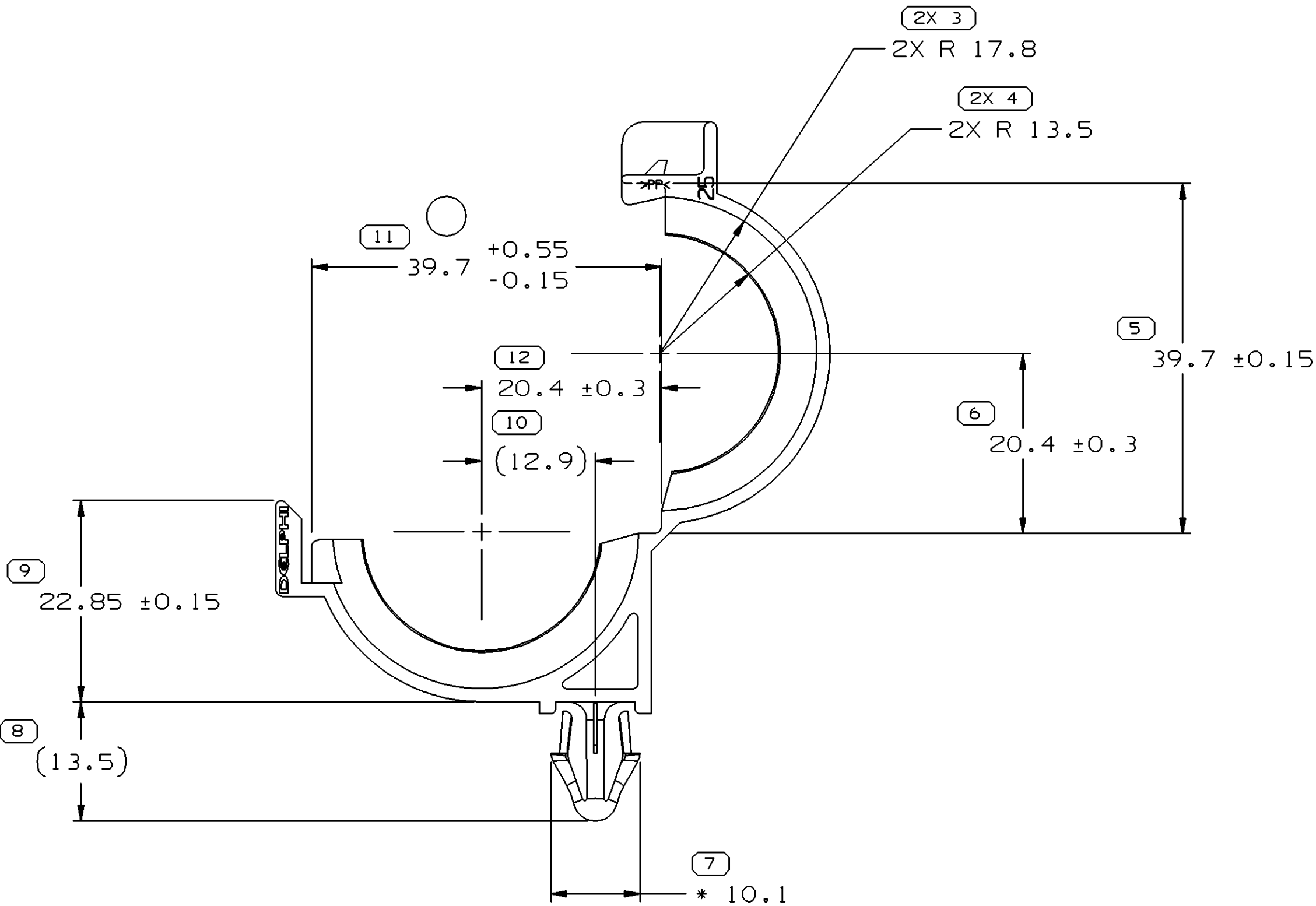
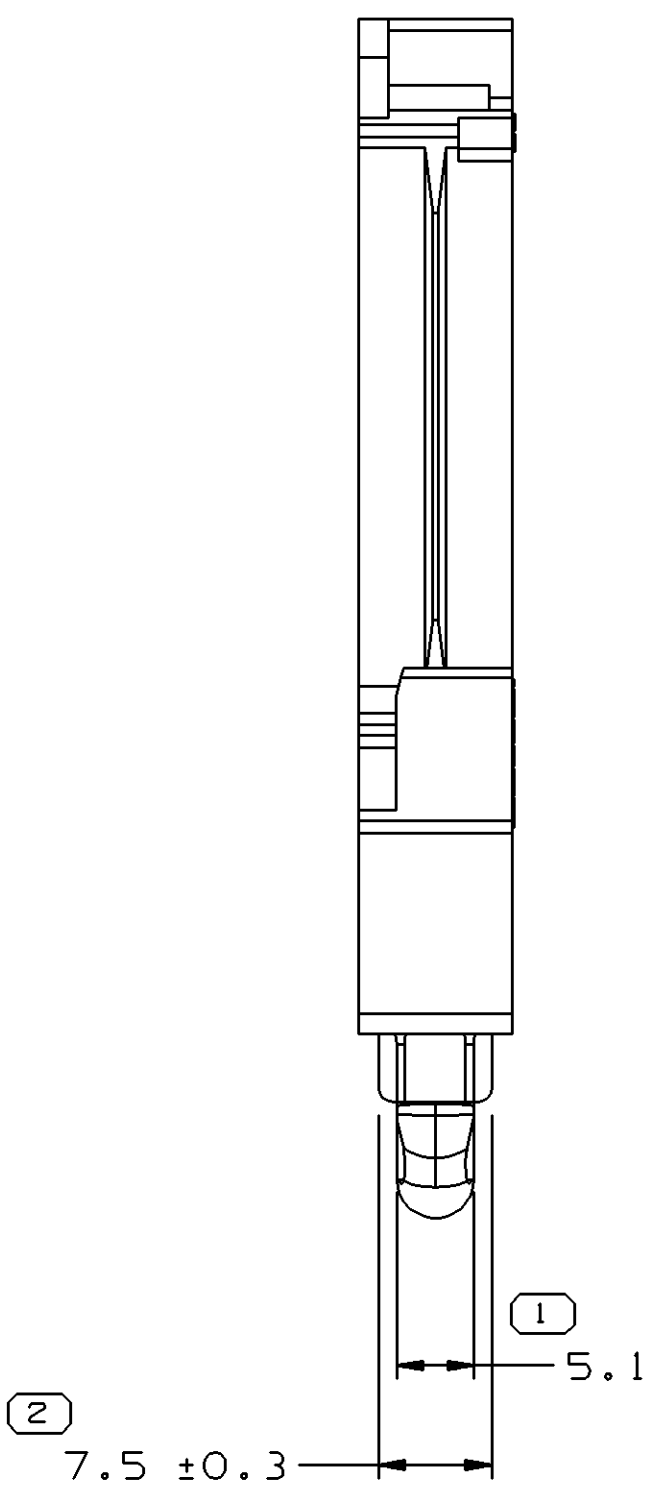


SYMBOL DEFINITION		MISSING SYMBOLS	
A DIMENSION WITHOUT AN INSPECTION REPORT SYMBOL ( ) DOES NOT REQUIRE INSPECTION. IT MAY BE CONTROLLED ON THE INDIVIDUAL COMPONENT DRAWING.	TOTAL NO OF INSPECTIONS REQUIRED	NO MISSING SYMBOL NUMBER	
	LAST NO. USED		
	15		
	13		

DATE		STG		REV		N/P		CHG		ZONE		REVISION HISTORY		AUTH		DR		APVD		APVD	
20MY03		R		A4		-		-		-		REDRAWN TO PD, 39.7 +0.55/-0.15 WAS 39.7 +/-0.15 AND REVISED DIMS AND EJECTOR PADS NOTE		241366		CMZ		GEG		FR	



OPTIONAL CONSTRUCTION



- NOTES
- UNLESS OTHERWISE SPECIFIED AND/OR INDICATED: DIMENSIONS ARE TO FACE OF VIEW SHOWN AND AUTOMATICALLY ROUNDED BY COMPUTER FOR INSPECTION (SEE MATH MODEL FOR PRECISE DIMENSIONS). FOR ALL OTHER DIMENSIONS NOT SHOWN BUT REQUIRED FOR TOOL BUILD, SEE MATH MODEL FOR PRECISE TOOL PATH DATA.
  - MATERIAL RECYCLING CODE PER ISO 11469. (1)X(0.1) RAISED CHARACTERS AS SHOWN TO BE LOCATED ON ANY EXTERIOR SURFACE. OPTIONAL CONSTRUCTION TO BE NO MATERIAL RECYCLING CODE.
  - THIS PART IS NOT CONTROLLED FOR AUTOMATIC FEEDING.
  - THIS PART TO FIT 25.4 ID CONVOLUTED CONDUIT.
  - (1)X(0.1) RAISED DELPHI CORPORATE BRAND TO BE LOCATED ON ANY EXTERIOR SURFACE, PREFERABLY VISIBLE AT FINAL ASSEMBLY. OPTIONAL CONSTRUCTION TO BE "PED" OR NO LOGO.
  - DIMENSIONS MARKED WITH (\*) MAY VARY -0.6 DUE TO BOW.
  - RECOMMENDED HOLE SIZE FOR CLIP 6.375 ±0.225 DIA HOLE IN 3.8 MAX THICK STOCK.

DIMENSIONAL RANGE (MM)		TOLERANCE UNLESS OTHERWISE SPECIFIED		ANGULAR TOLERANCE	
FROM	TO	±0.15	±0.2	±0.3	±0.4
0	20	±0.15	±0.2	±0.3	±0.4
20	30	±0.15	±0.2	±0.3	±0.4
30	40	±0.15	±0.2	±0.3	±0.4
40	50	±0.15	±0.2	±0.3	±0.4
50	60	±0.15	±0.2	±0.3	±0.4
60	70	±0.15	±0.2	±0.3	±0.4
70	80	±0.15	±0.2	±0.3	±0.4
80	90	±0.15	±0.2	±0.3	±0.4
90	100	±0.15	±0.2	±0.3	±0.4
100	150	±0.15	±0.2	±0.3	±0.4
150	200	±0.15	±0.2	±0.3	±0.4
200	250	±0.15	±0.2	±0.3	±0.4
250	300	±0.15	±0.2	±0.3	±0.4
300	400	±0.15	±0.2	±0.3	±0.4

PART DRAWING		THIRD ANGLE PROJECTION	
VOLUME (CM) 3,500		DO NOT SCALE	
ROUTING 6900		USE MATH DATA	
UNLESS OTHERWISE SPECIFIED THIS DOCUMENT IS IN ACCORDANCE WITH ASME Y14.5M-1994 AS AMENDED BY THE 2018 ADDENDUM TO Y14.5M-1994 TOLERANCING ADDENDUM-2001. SEPARATE PATTERNING OF FEATURES MAY BE GIVEN SEPARATELY REGARDLESS OF DATUM REFERENCES.		ALL DIMENSIONS ARE IN MILLIMETERS	
REFERENCE		REFERENCE	

DELPHI		DELPHI PACKARD ELECTRIC SYSTEMS	
WARREN, OH			
DR		DATE	
APVD1 A. UGALDE G.		130C94	
APVD2 A. UGALDE G.		130C94	
APVD3 E. TRACY		15N094	
APVD4			
APVD5			
SUBSTANCES OF CONCERN AND RECYCLED CONTENT PER DELPHI 10949001			
MATERIAL M2097001 PP 1M BLK			
DRAWING NAME		MOUN CLIP 6.40 CDT	
DRAWING NUMBER		12162583	
SIZE A0		SCALE 2:1	
FRAME NO 1		SHEET NO 1 OF 1	
STG R		REV A4	
N/P -		ZONE -	

# Mouser Electronics

Authorized Distributor

Click to View Pricing, Inventory, Delivery & Lifecycle Information:

[Aptiv:](#)

[12162583](#)