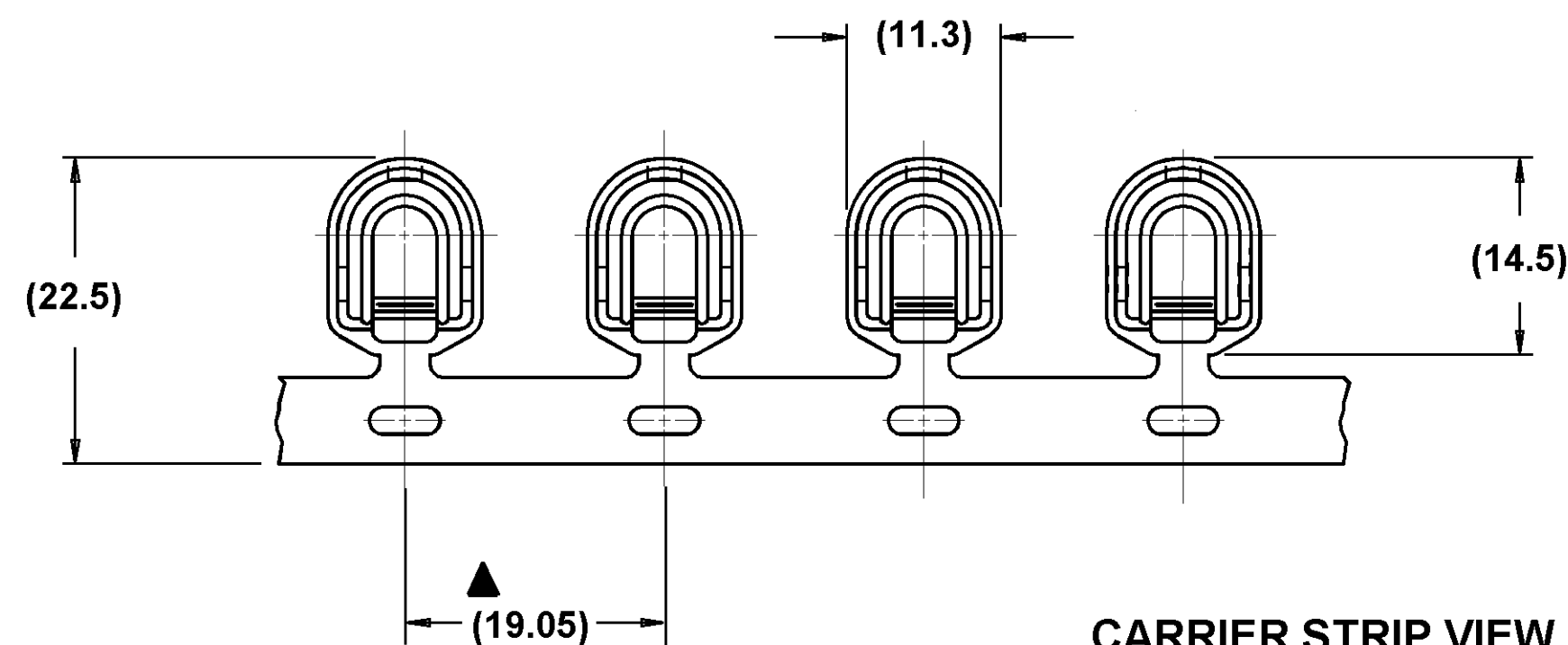
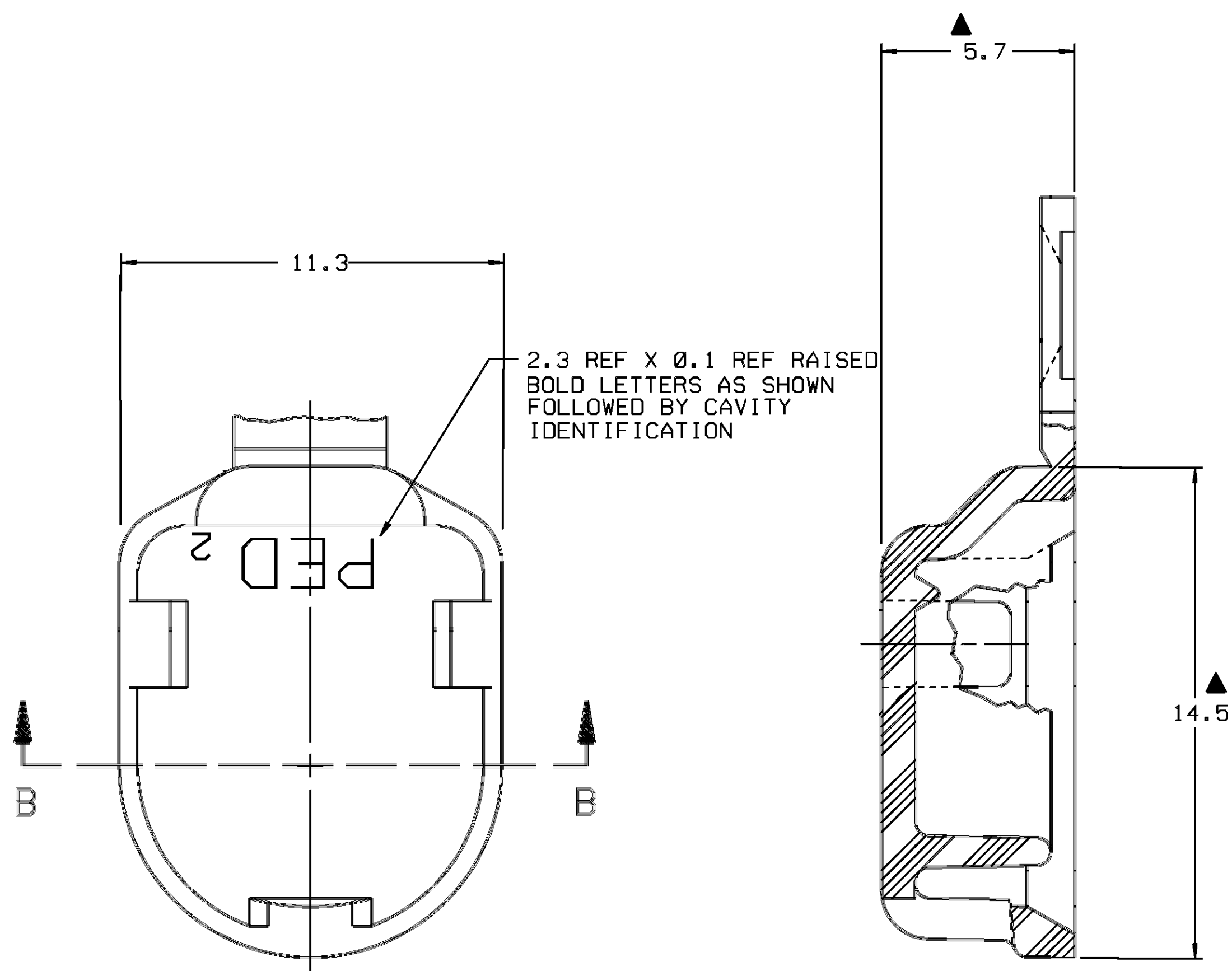
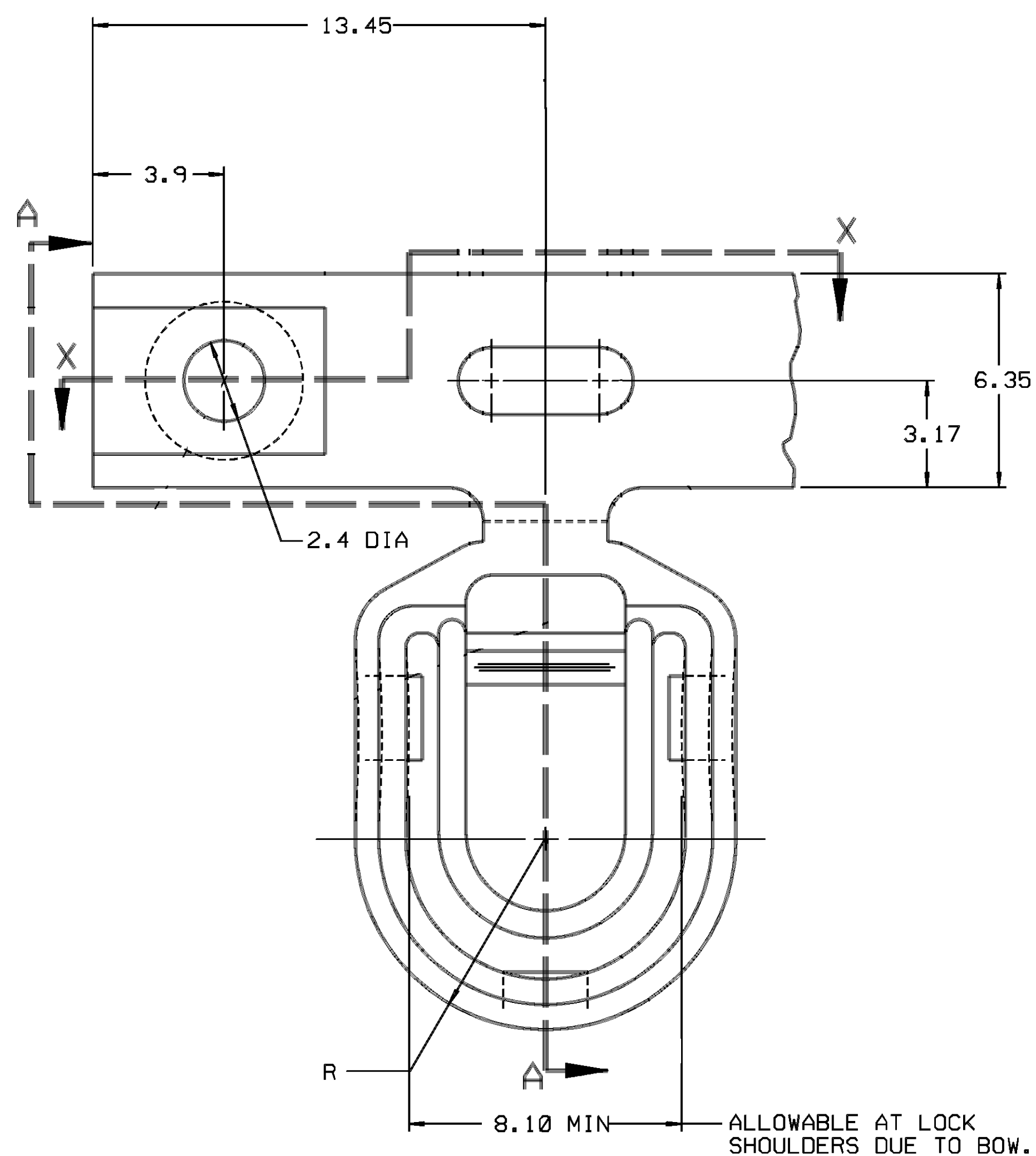
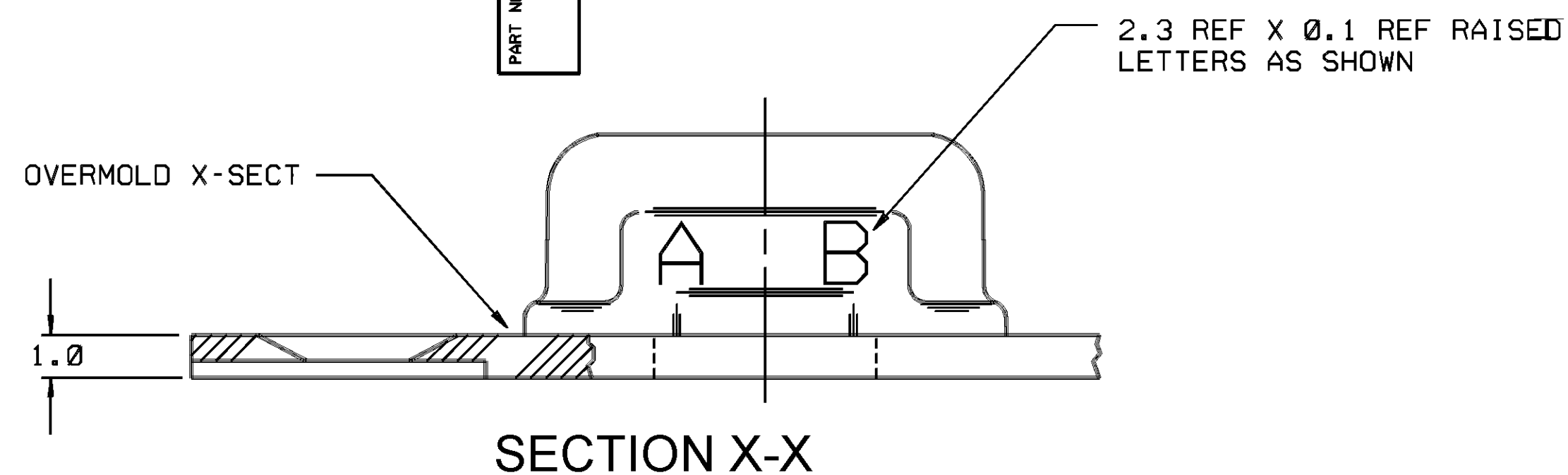


THIS DRAWING AND DESIGN HEREON CON-
STITUTES A PROPRIETARY DESIGN OF
PACKARD ELECTRIC DIVISION AND IS NOT
TO BE DUPLICATED OR REPRODUCED WITH-
OUT AUTHORITY OF PACKARD ELECTRIC
DIVISION.

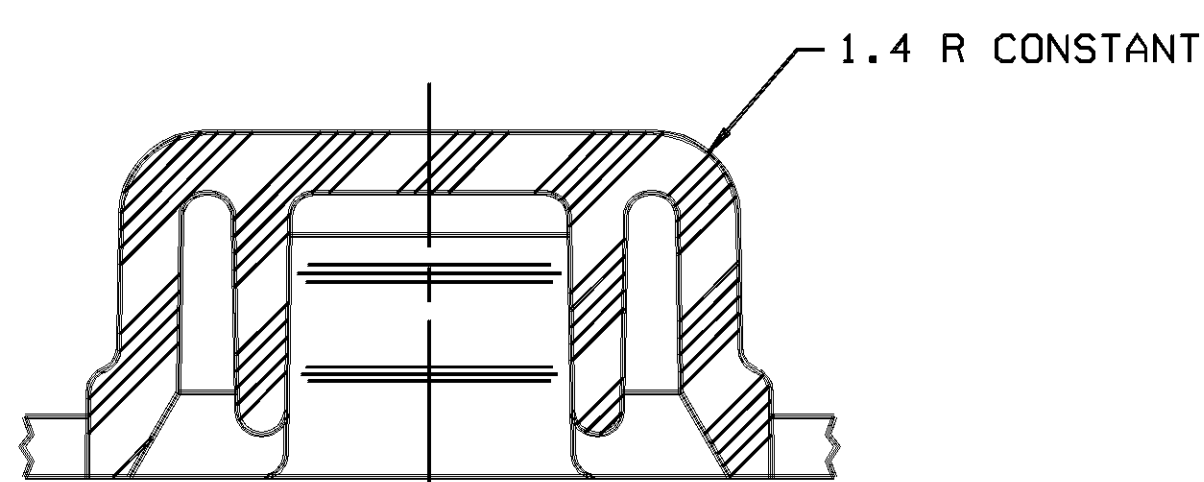
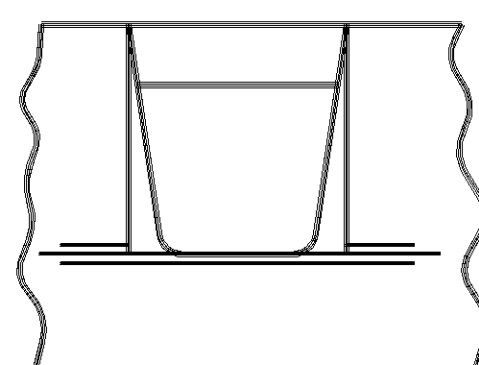
DO NOT SCALE



CARRIER STRIP VIEW



SECTION A-A



SECTION B-B

NOTES - 1. DIMENSIONS ARE TO FACE OF VIEW SHOWN, UNLESS OTHERWISE INDICATED.

2. THIS PART IS CONTROLLED FOR AUTOMATIC FEEDING AS DENOTED ON DRAWING WITH '▲'.

3. MATING CONNECTOR 12092404 OR EQUIVALENT.

PACKAGING NOTES - 1. PARTS MUST BE CLEAN - FREE OF ANY FOREIGN MATERIAL SUCH AS DUST, DIRT, MOLD RELEASE, ETC - FOR SUBSEQUENT PROCESSING.

2. SPLICES OTHER THAN SPECIFIED ON THIS DRAWING FOR THE OVERMOLD ARE NOT ACCEPTABLE.

3. MOLD RELEASE AGENT, IF REQUIRED, IS RESTRICTED TO A PAINTABLE TYPE, FREEKOTE 700 OR EQUIVALENT.


4. REEL MATERIALS SPECIFIED (C-7549) MUST INSURE PARTS REMAIN CLEAN THROUGHOUT MATERIAL HANDLING AND PROCESSING.

5. REELS MUST BE PLACED IN CLEAN POLYETHYLENE BAGS AFTER PROCESSING. BAGS MUST BE CLOSED DURING STORAGE AND SHIPMENT.

6. COMPLETED REELS MUST BE LESS THAN 30 LBS IN WEIGHT.

[illegible]

USE 12092438 TAXI AS O.D.

PED / NIBGAH MICROSTATION		FILE SPEC:	
THIRD ANGLE PROJECTION 		*****USER***** *****DOWNSPECIFICATION***** *****SYTIME*****	
CODE NO. 6901		METRIC DIMENSIONS ARE IN MILLIMETERS UNLESS OTHERWISE SPECIFIED.	
Q.C. - R-4226		TOLERANCE UNLESS OTHERWISE SPECIFIED DECIMALS ONE PLACE \pm 0.2 TWO PLACE \pm 0.10	
DWG. DATE 13FE89	SCALE 8:1	DR. JEFF REEVES	13FE89
EST. NO.		CK. T.E. MCKEE	DATE 08MR89
REFERENCE NO.		APPR. J.M. SENK	DATE 13MR89
MATERIAL SPEC.		APPR. J.A. YURTIN	DATE 13MR89
TPC COMPOUND NATURAL			
NAME TPA COVER			
PART NO. 1209 2407			SIZE D

PACKARD ELECTRIC

Mouser Electronics

Authorized Distributor

Click to View Pricing, Inventory, Delivery & Lifecycle Information:

[Aptiv:](#)

[12092407](#)