

**MATERIAL SPECIFICATIONS**

**RECOMMENDED**

BASE METAL - CDA-210, EXTRA SPRING TEMPER

\* TIN PLATING (WHERE APPLICABLE TO 125°C MAX CONTINUOUS USAGE): 0.0050±0.0025 MM (200±100 µIN) ELECTROPLATED TIN.

\* USAGE OF PLATING TYPES OTHER THAN RECOMMENDED MUST BE APPROVED BY DELPHI PACKARD ELECTRIC SYSTEMS ENGINEERING.

**MINIMUMS**

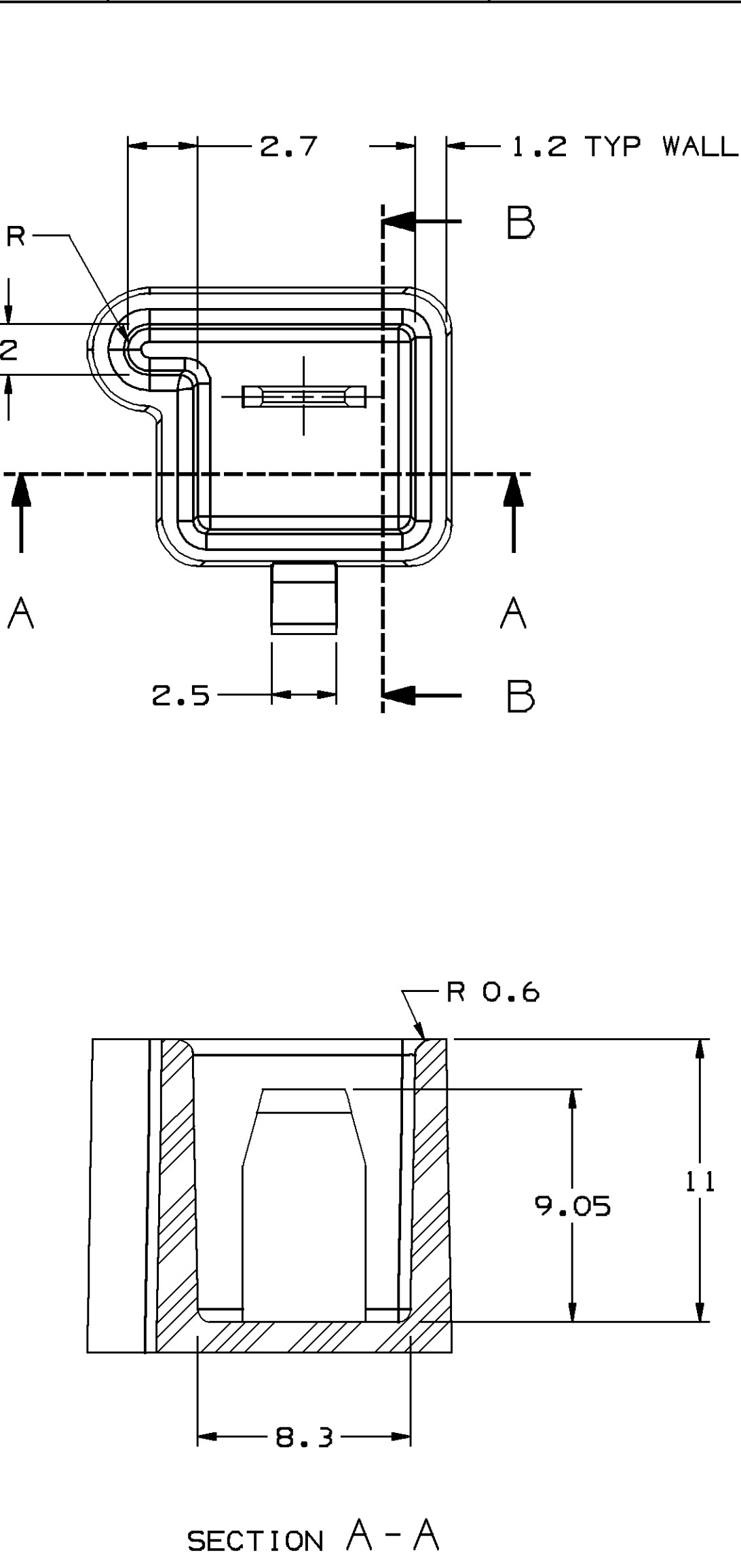
ELECTRICAL CONDUCTIVITY - ≥28% IACS AT 20 °C. USE OF A MATERIAL WITH CONDUCTIVITY <28% IACS MUST BE APPROVED BY PACKARD ELECTRIC MATERIALS ENGINEERING.

TENSILE STRENGTH - 430 - 480 MPa

UNDERPLATING FOR TIN PLATING - FOR BASE MATERIALS CONTAINING 10% OR MORE ZINC, AN UNDERPLATE OF COPPER 0.0025 MM (100 µIN) MINIMUM THICK IS REQUIRED.

PROCESSING LUBRICANT - ANY PROCESSING LUBRICANT REMAINING ON TERMINALS MUST NOT VARNISH OR DEGRADE THE ELECTRICAL PERFORMANCE OF THE CONNECTION UP TO A MAXIMUM TEMPERATURE OF 150°C. PROCESSING LUBRICANTS MUST BE APPROVED BY DELPHI PACKARD ELECTRIC SYSTEMS ENGINEERING.

**MATING BLADE INFORMATION**



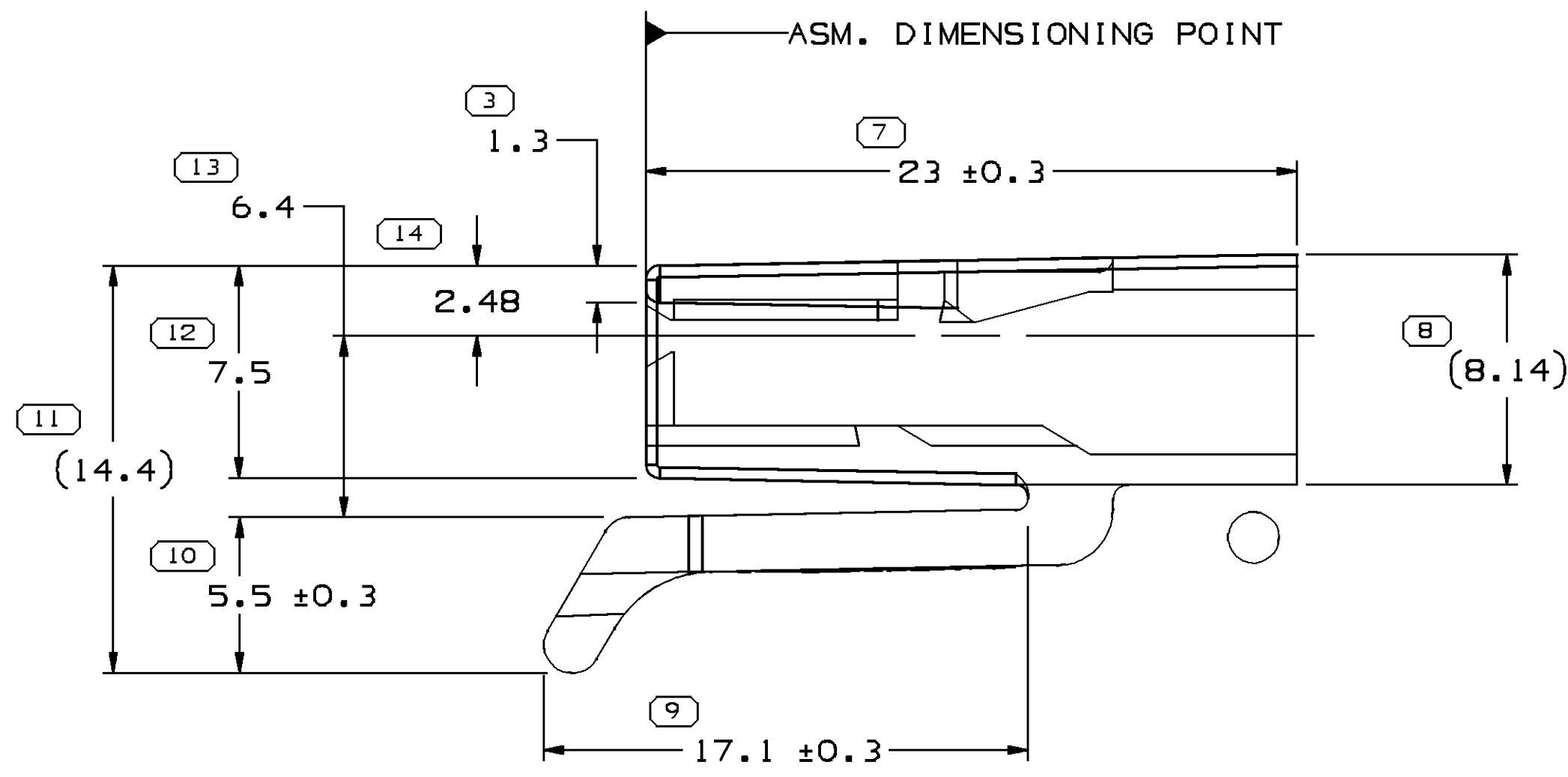
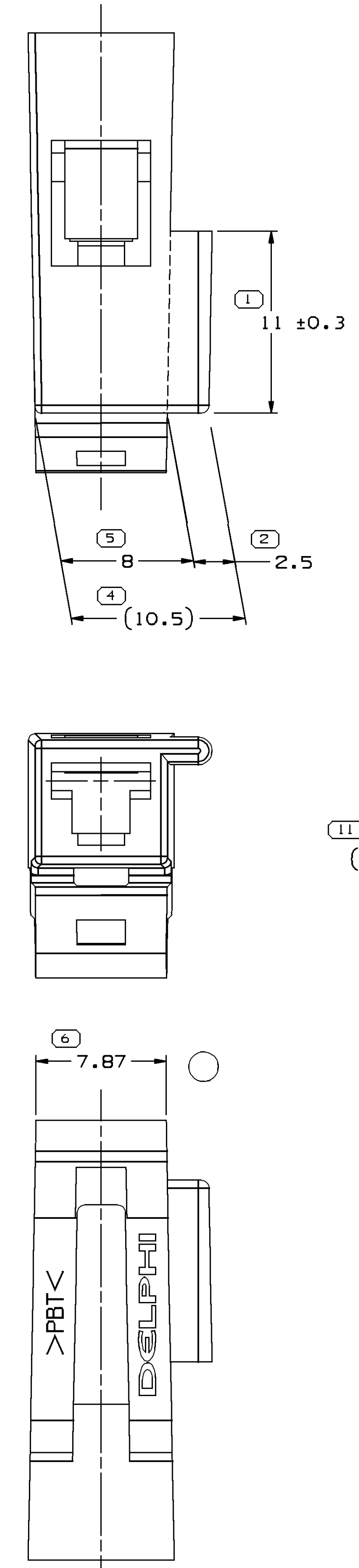
**MATING CONNECTOR INFORMATION**

RECOMMENDED MATERIAL - UNMODIFIED POLYESTER

**NOTES**

1. UNLESS OTHERWISE SPECIFIED AND/OR INDICATED:

DIMENSIONS ARE TO FACE OF VIEW SHOWN AND AUTOMATICALLY ROUNDED BY COMPUTER FOR INSPECTION (SEE MATH MODEL FOR PRECISE DIMENSIONS). FOR ALL OTHER DIMENSIONS NOT SHOWN BUT REQUIRED FOR TOOL BUILD, SEE MATH MODEL FOR PRECISE TOOL PATH DATA. ALL RADII 0.5 DRAFT IS 1° MAX ON ALL OUTSIDE SURFACES.



**NOTES**

1. UNLESS OTHERWISE SPECIFIED AND/OR INDICATED:

DIMENSIONS ARE TO FACE OF VIEW SHOWN AND AUTOMATICALLY ROUNDED BY COMPUTER FOR INSPECTION (SEE MATH MODEL FOR PRECISE DIMENSIONS). FOR ALL OTHER DIMENSIONS NOT SHOWN BUT REQUIRED FOR TOOL BUILD, SEE MATH MODEL FOR PRECISE TOOL PATH DATA.

2. MATERIAL RECYCLING CODE PER ISO 11469. (2.3)X(0.1) CHARACTERS AS SHOWN TO BE LOCATED ON ANY EXTERIOR SURFACE. OPTIONAL CONSTRUCTION TO BE NO MATERIAL RECYCLING CODE.

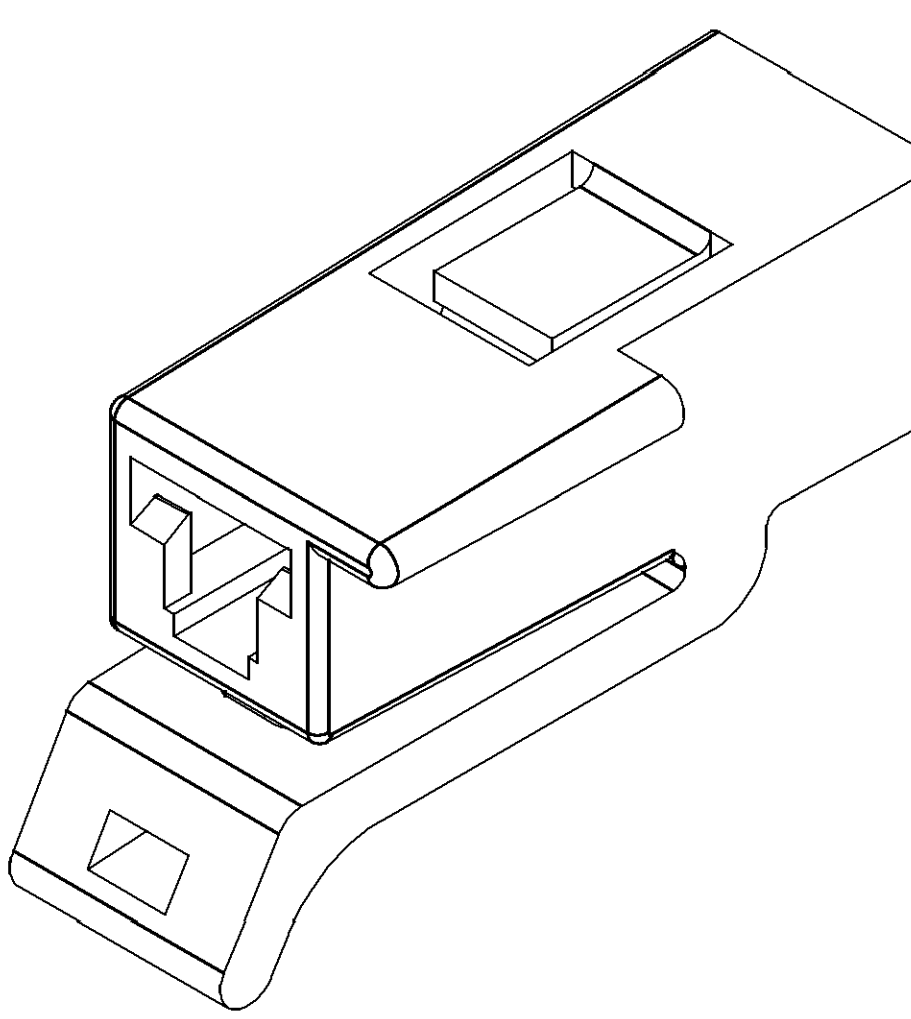
3. THIS PART IS NOT CONTROLLED FOR AUTOMATIC FEEDING.

4. REFERENCE MATING COMPONENTS OR EQUIVALENT:

CONNECTOR 12059885

5. (2.3)X(0.1) DELPHI CORPORATE BRAND TO BE LOCATED ON ANY EXTERIOR SURFACE, PREFERABLY VISIBLE AT FINAL ASSEMBLY. OPTIONAL CONSTRUCTION TO BE PED OR NO LOGO.

DWG STATUS				ZONE				REVISION HISTORY				AUTH		DR		AP/D	
DATE	STG	REV	N/P	CHG													
27FE06	R	B3	-	-				CLEARED REV COL & CREATED PART DRAWING				277643	ACB	FKV	B06		
18MY06	R	B4	-	-				REMOVED DRAFT ON TOP SURFACE BEHIND LOCK AND REMOVED BLENDS TO MAKE MODEL MATCH PART				280075	RH	RH	B06		



Dwg TYPE PART DRAWING	
STYLE	
VOLUME 10/11 1.106	DISTR CODE D
UNLESS OTHERWISE SPECIFIED THIS DOCUMENT IS IN ACCORDANCE WITH ASME Y14.5M-1994 AS APPLIED TO THE M/M SCHEMATIC DRAWING AND TOLERANCE AND/OR DIMENSIONAL SEPARATE MATING OF FEATURES MAY BE BASED SEPARATELY REBOLDS OF DATA REFERENCES.	
ALL DIMENSIONS ARE IN MILLIMETERS	
REFERENCE	
THIRD ANGLE PROJECTION	
DO NOT SCALE USE MATH DATA	
DIMENSIONAL RANGE (MM)	
FROM > 0 > 20 > 30 > 70 > 100 > 150 > 200 > 250 > 300	
TO 20 30 70 100 150 200 250 300 400	
TOLERANCE UNLESS OTHERWISE SPECIFIED	
±0.15 ±0.2 ±0.3 ±0.4 ±0.5 ±0.6 ±0.8 ±1 ±1.2	
ANGULAR TOLERANCE 22°	
SHORT ET	
DIMS IN ( ) INDICATE REFERENCE DIMENSIONS AND NO TOLERANCE LIMITS ARE ESTABLISHED	
DRAWING NAME CONN I F M/P 480 BLK	
DRAWING NUMBER 12059884	
SIZE A0	
SCALE 5:1	
FRAME NO 1 OF 1	
SHEET NO 1 OF 1	
STG REV N/P R B4 -	

DELPHI	
DELPHI PACKARD ELECTRIC SYSTEMS WARREN, OH	
DR	DATE
AP/D1 D. THOMAS	22APB7
AP/D2 J. COLDSNOW	27APB7
AP/D3 J. P. LITTLEFIELD	15JNB7
AP/D4	
AP/D5	
SUBSTANCES OF CONCERN AND RECYCLED CONTENT PER DELPHI 10949001	
MATERIAL W4695002 PBT BLK	

# Mouser Electronics

Authorized Distributor

Click to View Pricing, Inventory, Delivery & Lifecycle Information:

[Aptiv:](#)

[12059884](#)