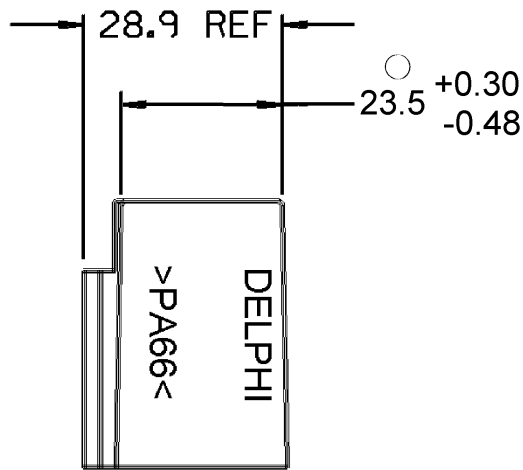
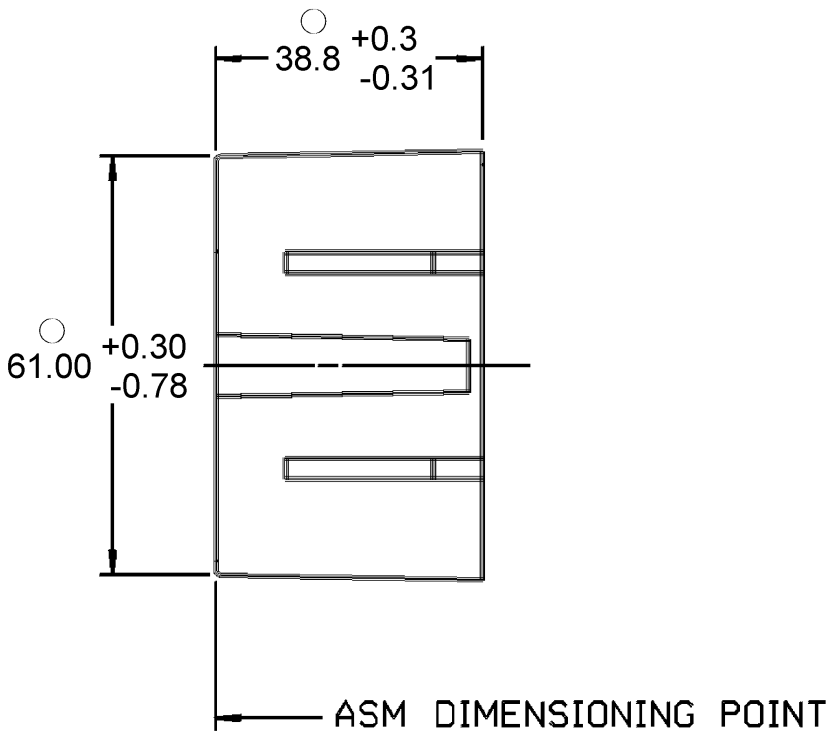
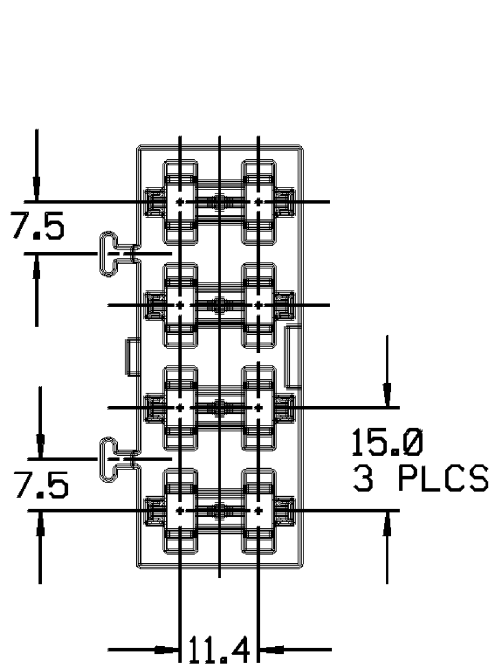


DWG STATUS					REVISION HISTORY					AUTH			APPROVAL		
DATE	STG	REV	INP	CHG	ZONE										
20MAY02	R	02	-	-		CLEARED REV COL & MATL SPEC WAS NYLON - TYPE 6 (BLACK) AND ADDED NOTES 6, LOGO NOTE & RECYCLE CODE NOTE				225192	OGG	OGG	AL		
05AP06	R	02	AA	-		DIM 61.00 ± 0.30 ± 0.78 WAS 61.00 ± 0.15 DIM 23.5 ± 0.30 ± 0.48 WAS 23.5 ± 0.3 ± 0.3 AND DIM 38.8 ± 0.3 ± 0.31 WAS 38.8 ± 0.3				279380	JBD	JWM	EST		



- NOTES
- 1.DIMENSIONS ARE TO FACE OF VIEW SHOWN, UNLESS OTHERWISE INDICATED.
 - 2.TERMINAL CAVITIES ARE IDENTICAL, EXCEPT AS SHOWN.
 - 3.MOUNTING RAILS ARE IDENTICAL.
 - 4.MOUNTING RAIL SLOTS ARE IDENTICAL.
 - 5.**RAIL SLOT DIMENSION MAY READ SMALLER AT THE BOTTOM OF PART THAN AT TOP BECAUSE OF PART BOW.
 - 6.THIS PART ACCEPTS THE FOLLOWING COMPONENTS OR EQUIVALENTS: CAVITIES TO ACCEPT 12054807 AND 12050204 TERMINAL.
 - 7.(2.3) X (0.1) RAISED DELPHI CORPORATE BRAND TO BE LOCATED ON ANY EXTERIOR SURFACE, PREFERABLY VISIBLE AT FINAL ASSEMBLY. OPTIONAL CONSTRUCTION TO BE "PED" OR NO LOGO
 8. MATERIAL RECYCLING CODE >PA66< PER SAE J1344. (2.3) X (0.1) RAISED CHARACTERS AS SHOWN TO BE LOCATED ON ANY EXTERIOR SURFACE. OPTIONAL CONSTRUCTION TO BE NO MATERIAL RECYCLING CODE.

DWG TYPE		PART DRAWING	
STYLE			
VOLUME (CH)	DISTR CODE		
ROUTING	6900	D	
UNLESS OTHERWISE SPECIFIED: THIS DRAWING IS IN ACCORDANCE WITH ASME Y14.5-2014, AS APPLICABLE. DIMENSIONS ARE GIVEN IN INCHES AND DECIMALS THEREOF. DIMENSIONS IN PARENTHESES ARE FOR INFORMATION ONLY. DIMENSIONS NOT SHOWN ARE TO BE DETERMINED BY THE DRAWING ENGINEER. DIMENSIONS NOT SHOWN ARE TO BE DETERMINED BY THE DRAWING ENGINEER. DIMENSIONS NOT SHOWN ARE TO BE DETERMINED BY THE DRAWING ENGINEER.			
REFERENCE			
12052472 "D" SIZE			
THIRD ANGLE PROJECTION			
SCALE	A0	SCALE	NONE

DELPHI	
DELPHI PACKARD ELECTRIC SYSTEMS	
WARREN, OH	
DR	K. STURGEON
DATE	30NOV84
APPROVED BY	F. HESTON
DATE	03DEC84
APPROVED BY	K. PHILLIPS
DATE	05DEC84
SUBSTANCES OF CONCERN AND RECYCLED CONTENT PER DELPHI A 10848001	
MATERIAL	
M3592001 PA66 IM HS BLK	
DRAWING NAME	
BASE FUSBLK PAC/ON III	
DRAWING NUMBER	
12052472	
SIZE	A0
SCALE	NONE
FRAME NO	1 OF 1
SHEET NO	1 OF 1
STG	R
REV	02
INP	AA

Mouser Electronics

Authorized Distributor

Click to View Pricing, Inventory, Delivery & Lifecycle Information:

[Aptiv:](#)
[12052472](#)