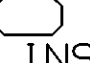
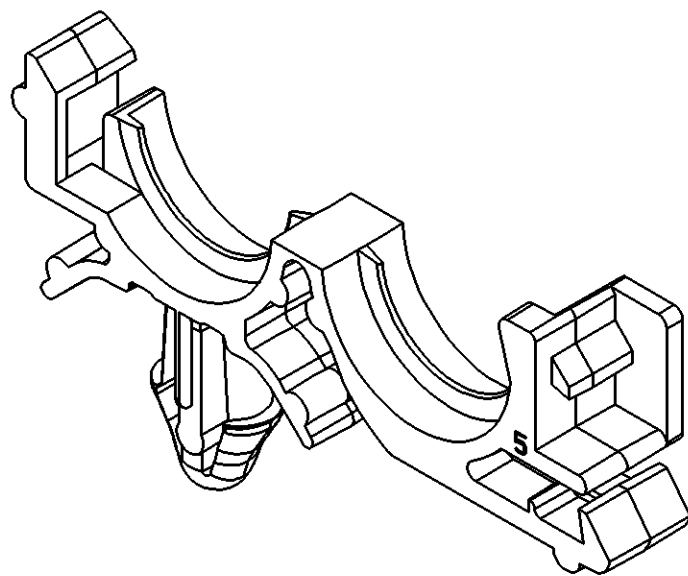
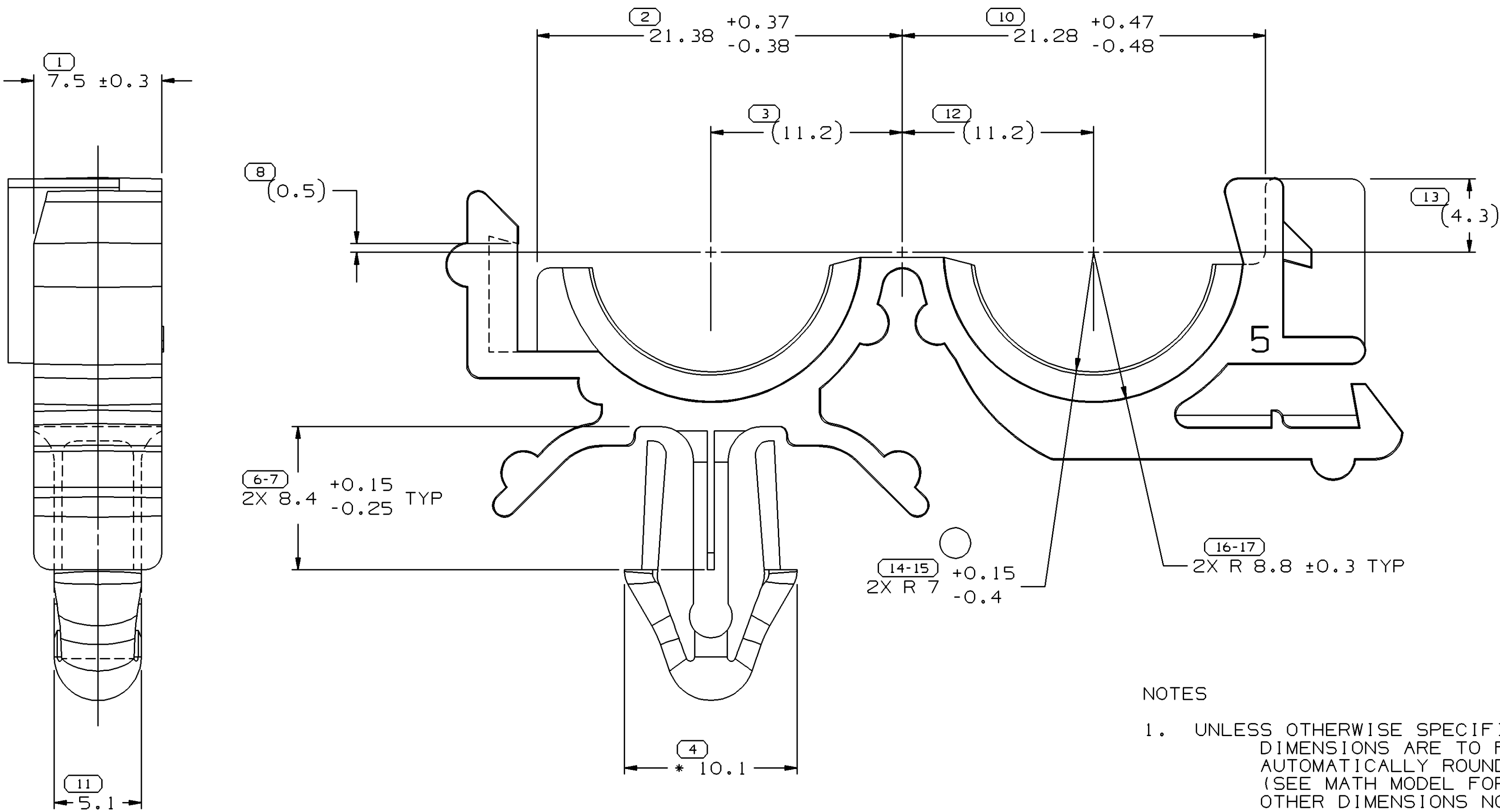
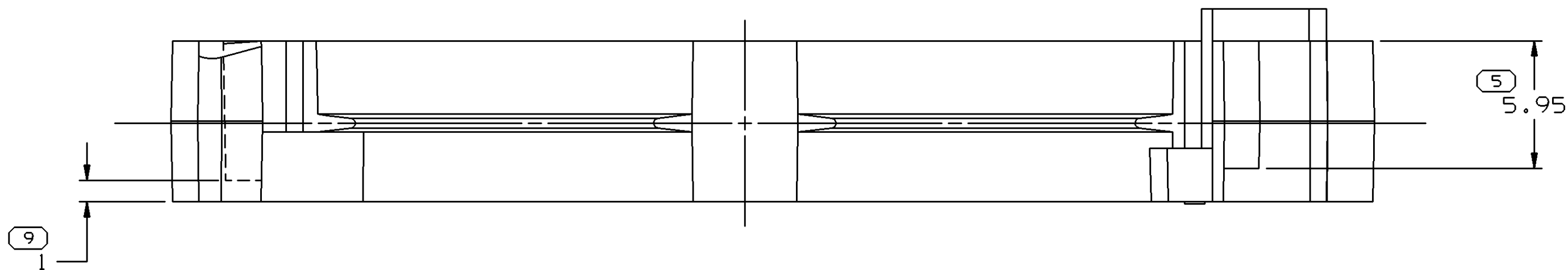


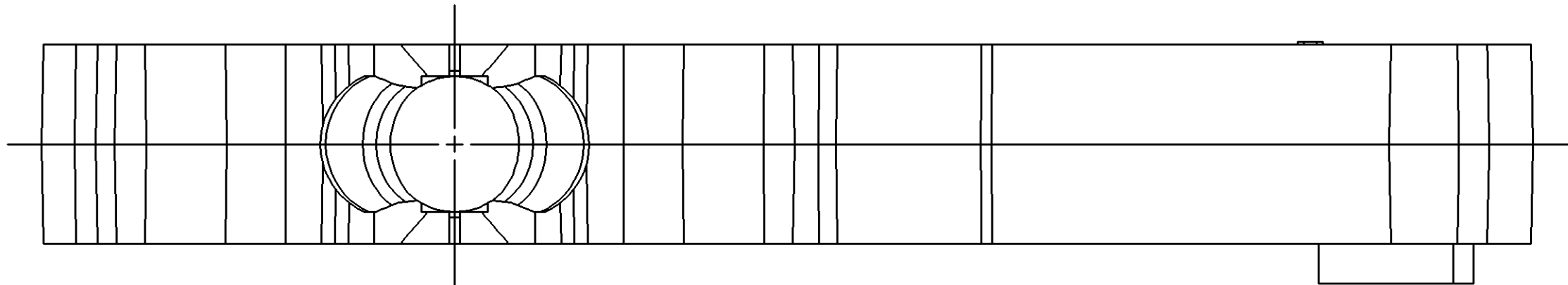
SYMBOL DEFINITION			MISSING NUMBERS
A DIMENSION WITHOUT AN INSPECTION REPORT SYMBOL  DOES NOT REQUIRE INSPECTION. IT MAY BE CONTROLLED ON AN INDIVIDUAL COMPONENT DRAWING.	TOTAL NO. OF SYMBOLS ON DRAWING	14	
	LAST NO. USED	17	

DWG STATUS					ZONE	REVISION HISTORY			AUTH	DR	APVD 1	APVD 2
DATE	STG	REV	N/P	CHG								
22SE00	R	C2	-	-		CLEARED REV COLUMN: REDRAWN TO PD, REVISED DIMENSING AND ADDED NOTE 4			201369	AMG	FRG	
25N003	R	C3	-	-		2X R7+0.15-0.4 WAS 2X R7 AND MAT'L SPEC WAS R0061354			249147	TLD	TLD	PMJ







VIEW SCALE DOES NOT REFLECT ACTUAL PART SIZE

- NOTES
- UNLESS OTHERWISE SPECIFIED AND/OR INDICATED: DIMENSIONS ARE TO FACE OF VIEW SHOWN AND AUTOMATICALLY ROUNDED BY COMPUTER FOR INSPECTION (SEE MATH MODEL FOR PRECISE DIMENSIONS). FOR ALL OTHER DIMENSIONS NOT SHOWN BUT REQUIRED FOR TOOL BUILD, SEE MATH MODEL FOR PRECISE TOOL PATH DATA.
  - RECOMMENDED HOLE SIZE FOR CLIP 6.6/6.1 DIA HOLE IN 3.15 MIN TO 6.3 MAX THICK STOCK.
  - THIS PART TO FIT 13 I.D. CONVOLUTED CONDUIT.
  - DIMENSION MARKED WITH \* MAY VARY -0.6 DUE TO BOW.



PROCESS SENSITIVE DIMENSION	
DIMENSIONS ENCLOSED IN ( ) INDICATE REFERENCE DIMENSIONS AND NO TOLERANCE LIMITS ARE ESTABLISHED	
DIMENSIONAL RANGE (MM)	CHART E
FROM 0 TO 20	> 20
TO 20	> 30
30	> 70
70	> 100
100	> 100
TOLERANCE UNLESS OTHERWISE SPECIFIED	
±0.15   ±0.2   ±0.3   ±0.4   ±0.5	
ANGULAR TOLERANCE ±2°	

DWG TYPE		PART DRAWING	
STYLE			
VOLUME (CM³)		DISTR CODE	
2.230			
ROUTING			
6900,6901			
UNLESS OTHERWISE SPECIFIED			
THIS DOCUMENT IS IN ACCORDANCE WITH ASME Y14.5M-1994 AS AMENDED BY THE 6M GLOBAL DIMENSIONING AND TOLERANCING ADDENDUM-2001. SEPARATE PATTERNS OF FEATURES MAY BE GAGED SEPARATELY REGARDLESS OF DATUM REFERENCES.			
ALL DIMENSIONS ARE IN MILLIMETERS			
REFERENCE			
THIRD ANGLE PROJECTION		DO NOT SCALE	
		USE MATH DATA	
			

DELPHI										
DELPHI PACKARD ELECTRIC SYSTEMS										
WARREN, OH										
DR							DATE			
APVD1 RONALD KINOLT							08SE82			
APVD2 O.E.SHERY							29SE82			
APVD3 KEN GERM							29SE82			
APVD4										
APVD5										
SUBSTANCES OF CONCERN AND RECYCLED CONTENT PER DELPHI 10949001										
MATERIAL										
M0661002 PP BLK										
DRAWING NAME										
MOUN CLIP 6.35 CDT										
DRAWING NUMBER										
12034281										
SIZE		SCALE		FRAME NO		SHEET NO		STG	REV	N/P
A1		5:1		1 OF 1		1 OF 1		R	C3	-

# Mouser Electronics

Authorized Distributor

Click to View Pricing, Inventory, Delivery & Lifecycle Information:

[Aptiv:](#)

[12034281](#)