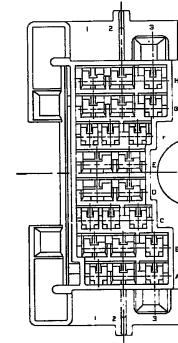
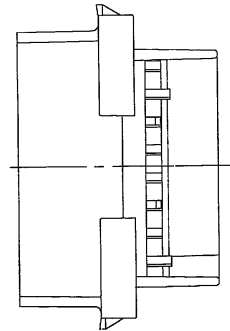
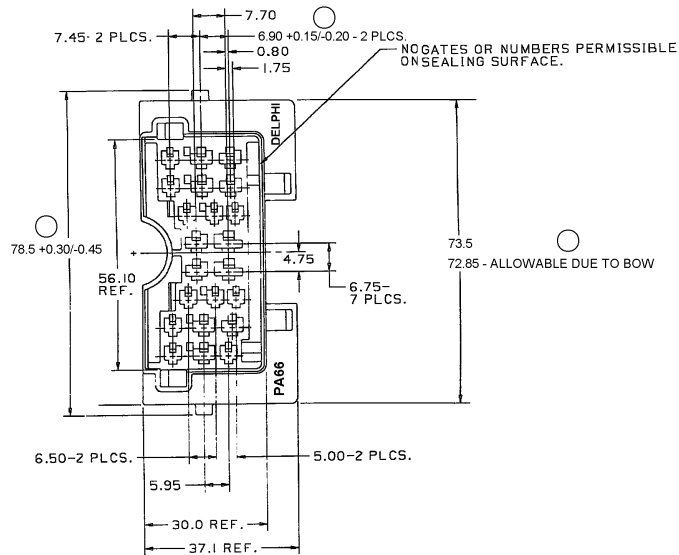


LINE STATUS					ZONE	REVISION HISTORY	AUTH	ER	EK	ANNO
DATE	STS	REV	CHK	WP						
17J02	R	006	-	-		MATL SPEC WAS NYLON TYPE 6 BLACK	219519	BYP	BYP	JH
03M006	R	06	-	AA		8.90 +0.15/-0.20 - 2 PLCS WAS 8.90 - 2 PLCS. 78.5 +0.30/-0.45 WAS 78.5, 48.0 +0.30/-0.40 WAS 48.0 AND 73.5/72.85 - ALLOWABLE DUE TO BOW WAS 73.5	278121	EF5	JAA	RMD



PATENT PENDING

- NOTES:
1. CAVITIES D1 AND E1 TO ACCEPT 12020125 TERMINAL OR EQUIVALENT.
 2. CAVITIES A1, A3, B3, C1, C2, C3, F1, F2, F3, G3 & H3 TO ACCEPT 12020115 TERMINAL OR EQUIVALENT.
 3. CAVITIES A2, B1, B2, D2, E2, G2, H1 & H2 TO ACCEPT 12020119 TERMINAL OR EQUIVALENT.
 4. MATING CONNECTOR 12020900 OR EQUIVALENT.
 5. SECONDARY LOGO 12020906 OR EQUIVALENT.
 6. MATERIAL RECEIVING CODE: -p4666- PER SAE J1844 1231 X 10 I1
RAISED CHARACTERS AS SHOWN TO BE LOCATED ON ANY EXTERIOR SURFACE
OPTIONAL CONSTRUCTION TO BE NO MATERIAL RECEIVING CODE.
 7. 1231 X 10 I1 RAISED DELPHI CORPORATE BRAND TO BE LOCATED ON ANY
EXTERIOR SURFACE, PREFERABLY VISIBLE AT FINAL ASSEMBLY.
OPTIONAL CONSTRUCTION TO BE "PECO" OR NO LOGO.

[illegible]

Mouser Electronics

Authorized Distributor

Click to View Pricing, Inventory, Delivery & Lifecycle Information:

[Aptiv:](#)
[12020904](#)