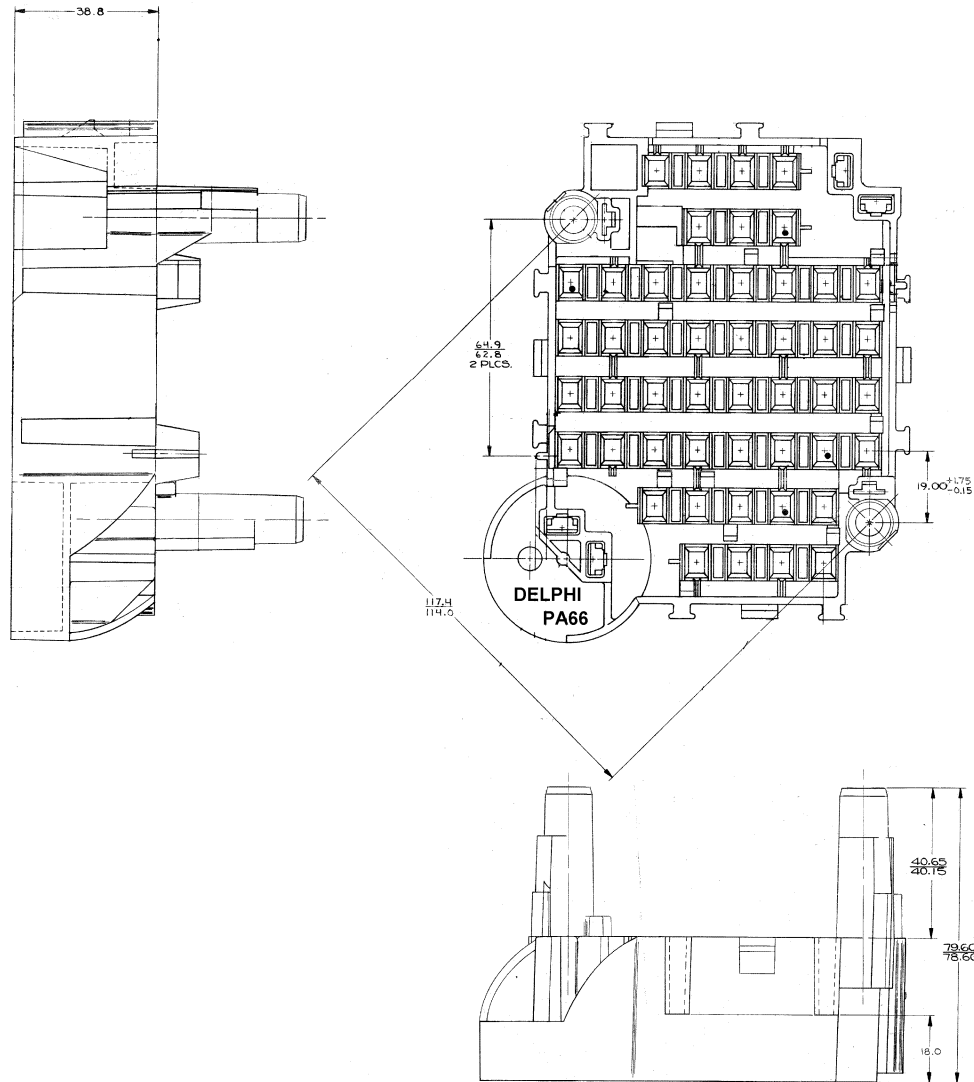
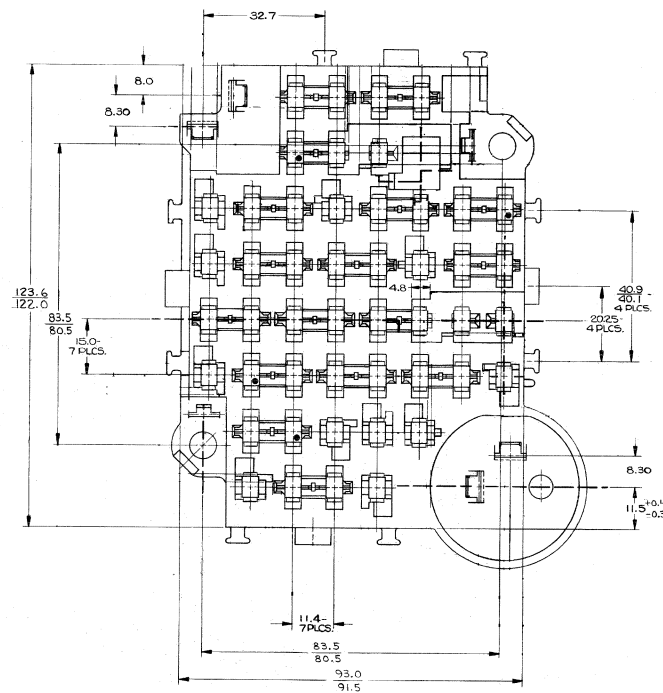


DELPHI PACKARD ELECTRIC SYSTEMS
WARREN, OHIO 44486



- NOTES**
1. ALL RADIUS 0.40 UNLESS OTHERWISE SPECIFIED.
 2. DIMENSIONS ARE TO FACE OF VIEW SHOWN, UNLESS OTHERWISE INDICATED.
 3. 1° DRAFT ON ALL OUTSIDE SURFACES, UNLESS OTHERWISE SPECIFIED.
 4. ANGULAR TOLERANCE $\pm 2^\circ$.
 5. FUSE TERMINAL CAVITIES ARE IDENTICAL, EXCEPT AS SHOWN.
 6. ACCESSORY CAVITIES ARE IDENTICAL, EXCEPT AS SHOWN.
 7. FLASHER CAVITIES ARE IDENTICAL.
 8. MOUNTING LEGS ARE IDENTICAL.
 9. MOUNTING RAILS ARE IDENTICAL, EXCEPT AS SHOWN.
 10. CIRCUIT BREAKER CAVITIES ARE IDENTICAL.
 11. Δ - 2.5 MAX. PERMISSIBLE.
 12. PERMISSIBLE FOR CAVITIES MARKED Δ TO GAUGE TIGHT FOR TOP SECTION OF CAVITY (8.1 DIMENSION).
 13. MATERIAL RECYCLING CODE Δ PA66 Δ PER SAE J1344. (2.3)(0.1) RAISED CHARACTERS AS SHOWN TO BE LOCATED ON ANY EXTERIOR SURFACE. OPTIONAL CONSTRUCTION TO BE NO MATERIAL RECYCLING CODE.
 14. (2.3)(0.1) RAISED DELPHI CORPORATE BRAND TO BE LOCATED ON ANY EXTERIOR SURFACE, PREFERABLY VISIBLE AT FINAL ASSEMBLY. OPTIONAL CONSTRUCTION TO BE "PED" OR NO LOGO.

DELPHI Automotive Systems			
MATERIAL SPEC		TOLERANCE UNLESS OTHERWISE SPECIFIED	
R0067535 PA66 HS IM RG BLK		DECIMAL: ONE PLACE ± 0.3 ANGULAR: $\pm 2^\circ$ TWO PLACES ± 0.15	
SUBSTANCES OF CONCERN AND RECYCLED CONTENT PER DELPHI - A 10949001			
PART DRAWING			
CODE NUMBER	6900	DWG DATE	25FEO2
QC SPEC	STYLE	SCALE	2:1
PART GEOMETRY		UNLESS OTHERWISE SPECIFIED:	
2D PLANAR		THIS DOCUMENT IS IN ACCORDANCE WITH ASME Y14.5M - 1994 AS AMENDED BY THE 2003 GLOBAL DIMENSIONING AND TOLERANCING ADDENDUM - 1999. ALL GEOMETRIC TOLERANCES AND RELATED DATUMS APPLY. RFS. RULE #1 (PERFECT FORM AT MMC) DOES NOT APPLY WHEN RELATIONSHIP BETWEEN FEATURES IS ESTABLISHED BY ORIENTATION OR LOCATION TOLERANCES. SEPARATE POSITION CALLOUTS MAY BE GAGED SEPARATELY REGARDLESS OF DATUM REFERENCES.	
CHANGE RESTRICTED NO MANUAL CHANGES		REFERENCE	
DO NOT SCALE		DATE	
METRIC UNLESS OTHERWISE SPECIFIED ALL DIMENSIONS ARE IN MILLIMETERS		APVD1 L. GARY 25FEO2	
		APVD2 G. ESTRADA 25FEO2	
		APVD3 J. HORROCH 25FEO2	
		APVD4	
DRAWING NAME			
BASE FUSBLK PAC/ON III			
SHEET NUMBER	DRAWING NUMBER	DWG STATUS	SIZE
1 OF 1	12020367	R A3	A0

Mouser Electronics

Authorized Distributor

Click to View Pricing, Inventory, Delivery & Lifecycle Information:

[Aptiv:](#)

[12020367](#) [12020367-B](#)