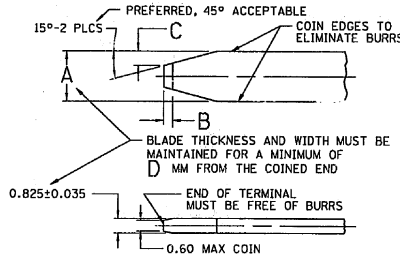


DWG STATUS					ZONE	REVISION HISTORY	AUTH	DR	APVD 1	APVD 2
DATE	STG	REV	N/P	CHG						
25SE02	R	04	-	-	MAT'L SPEC WAS R0067547 & ADDED NOTES (2 PLCS)	231206	RAO	RH	ET	



SERIES	A ±0.10	B ±0.15	C	D MIN
280	2.80	0.50	0.8±0.3	8.20
480	4.80	0.50	0.8±0.3	8.20

## MATERIAL SPECIFICATIONS

### RECOMMENDED

BASE METAL - CDA-210, GILDING, EXTRA SPRING TEMPER  
PLATING - 0.0050±0.0025 MM THICK TIN

### MINIMUMS

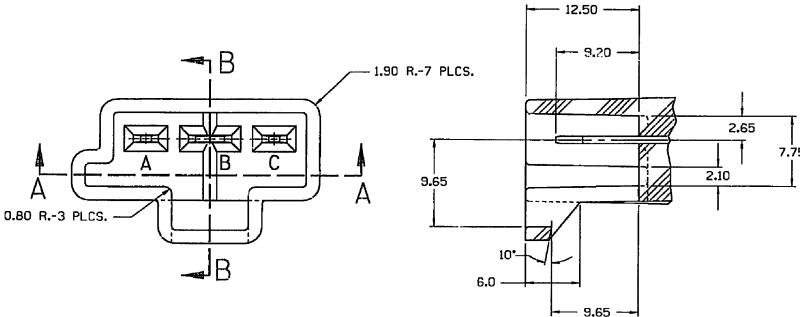
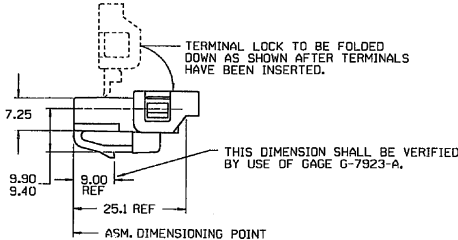
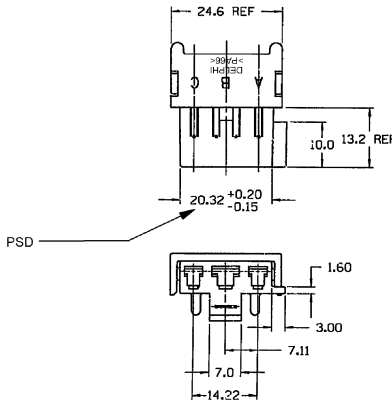
**ELECTRICAL CONDUCTIVITY -  $\geq 20\%$  IACS @ 20°C. USE OF A MATERIAL WITH CONDUCTIVITY  $< 20\%$  IACS MUST BE APPROVED BY PACKARD ELECTRIC MATERIALS ENGINEERING.**

TENSILE STRENGTH - 407 MPa

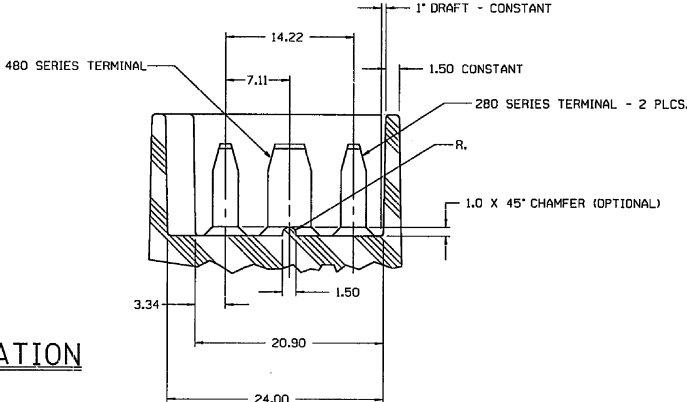
PLATING - FOR LOW ENERGY ( $\leq 5v$ ) AND NON-PASSENGER COMPARTMENT POWER CIRCUITS,  $0.0C50 \pm 0.0025$  MM THICK TIN. FOR MATERIALS CONTAINING 10% OR MORE ZINC, AN UNDERPLATE OF COPPER  $0.0050 \pm 0.0025$  MM THICK IS REQUIRED.

### MATING BLADE INFORMATION

**SCALE 8:**



## SECTION B-B



## SECTION A-A

### MATING CONNECTOR INFORMATION


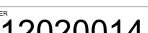
**SCALE 4:**

**NOTE**—1. ALL RADII 0.40, UNLESS OTHERWISE SPECIFIED

- ## NOTES

1. DIMENSIONS ARE TO FACE OF VIEW SHOWN, UNLESS OTHERWISE INDICATED
2. CAVITIES "A" & "C" TO ACCEPT 12015823 TERMINAL OR EQUIVALENT.
3. CAVITY "B" TO ACCEPT 12015828 TERMINAL OR EQUIVALENT.
4. MATING COMPONENT – LITTLE FUSE RELAY SWITCH OR EQUIVALENT.
5. (2.3) X (0.1) RAISED DELPHI CORPORATE BRAND TO BE LOCATED ON AN EXTERIOR SURFACE, PREFERABLY VISIBLE AT FINAL ASSEMBLY. OPTIONAL CONSTRUCTION TO BE "PED" OR NO LOGO
6. MATERIAL RECYCLING CODE #PA66G PER SAE J1344. (2.3) X (0.1) RAISED CHARACTERS AS SHOWN ON 5B TO BE LOCATED ON AN EXTERIOR SURFACE. OPTIONAL CONSTRUCTION TO BE NO MATERIAL RECYCLING CODE.

DRAWING TYPE		PART DRAWING	
STYLE			
VOLUME (CM)		DIST CODE	
ROUTING		D	
6900			
UNLESS OTHERWISE SPECIFIED			
<p>THIS DOCUMENT IS IN ACCORDANCE WITH ASME Y14.5M-1994, AS WHENED BY THE USE OF FEDERAL DIMENSIONING AND TOLERANCE PRACTICES - 1997, ALL DIMENSIONS TO BE SHOWN AND RELATED DIMENSIONS ARE BY RULE AND PROPORTION FROM THE DRAWING. DIMENSIONS ARE TO BE SHOWN TO THE CENTER OF THE DIMENSION LINE UNLESS OTHERWISE SPECIFIED. DIMENSIONS ARE TO BE SHOWN TO THE CENTER OF THE DIMENSION LINE UNLESS OTHERWISE SPECIFIED. DIMENSIONS ARE TO BE SHOWN TO THE CENTER OF THE DIMENSION LINE UNLESS OTHERWISE SPECIFIED.</p>			
REFERENCE			
THIRD ANGLE PROJECTION			
			

									
DELPHI PACKARD ELECTRIC SYSTEMS WARREN, OHIO									
THIS DRAWING IS THE PROPERTY DESIGN OF DELPHI CORPORATION. NO PARTS OR MATERIALS TO BE USED HEREON FOR ANY OTHER PURPOSE WITHOUT THE FURNISHING OF LICENSE AND SURVEY TO DELPHI CORPORATION									
DR						DATE			
APR/01	CURT HARVEY					18NOV80			
APR/02	D. THIRY					25NOV80			
APR/03	HOI LUI					25NOV80			
APR/04									
APR/05									
SUBSTANCES OF CONCERN AND RECYCLED CONTENT PER DELPHI-A-1084001									
MATERIAL									
M3592001 PA66 HS IM BLK									
DRAWING NAME									
CONN 3F M/P 280,480									
DRAWING NUMBER									
									
SIZE	SCALE	FRAME NO.	SHEET NO.	STD	REV	REV	REV	REV	REV

# Mouser Electronics

Authorized Distributor

Click to View Pricing, Inventory, Delivery & Lifecycle Information:

[Aptiv:](#)

[12020014](#)