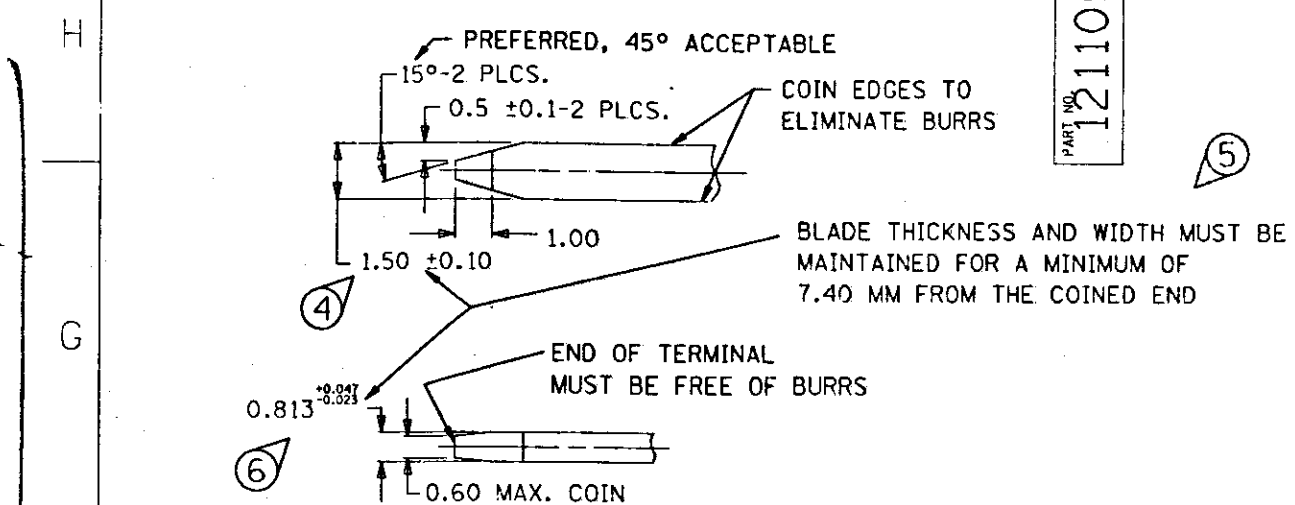


THIS DRAWING AND DESIGN HEREON CONSTITUTES A PROPRIETARY DESIGN OF PACKARD ELECTRIC DIVISION AND IS NOT TO BE DUPLICATED OR REPRODUCED WITHOUT AUTHORITY OF PACKARD-ELECTRIC DIVISION.



MATERIAL SPECIFICATIONS

RECOMMENDED

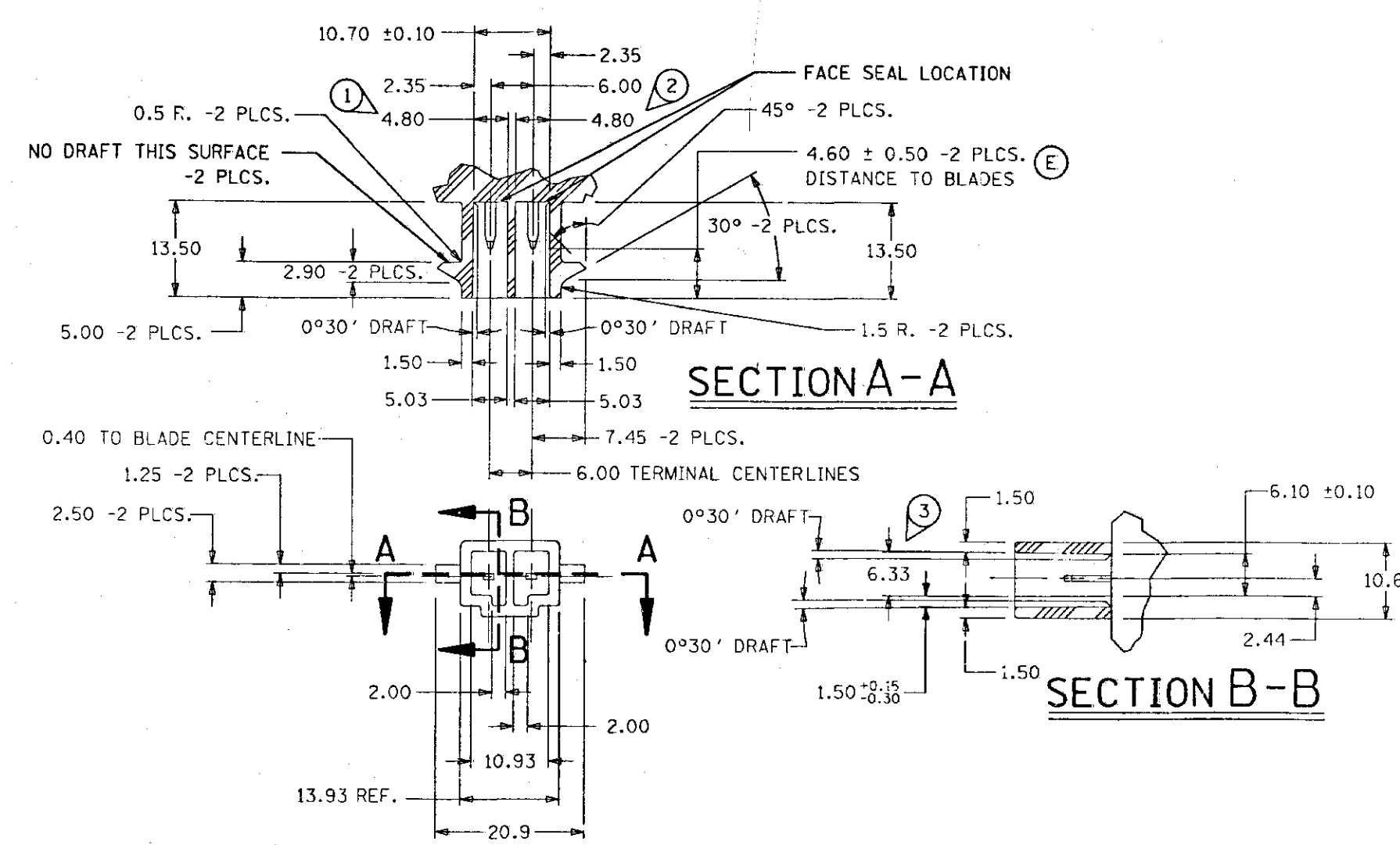
BASE MATERIAL - CDA-210, GILDING, EXTRA SPRING TEMPER
PLATING - 0.0050 X .0025 MM THICK TIN

MINIMUMS

ELECTRICAL CONDUCTIVITY - > 20% IACS @ 20°C. USE OF A MATERIAL WITH CONDUCTIVITY < 20% IACS MUST BE APPROVED BY PACKARD ELECTRIC MATERIALS ENGINEERING.
TENSILE STRENGTH - 407 MPa
PLATING - FOR LOW ENERGY (< 5V) AND NON-PASSENGER COMPARTMENT POWER CIRCUITS, 0.0050 X 0.0025 MM THICK TIN. FOR MATERIALS CONTAINING 10% OR MORE ZINC, AN UNDERPLATE OF COPPER 0.0050 X 0.0025 MM THICK IS REQUIRED.

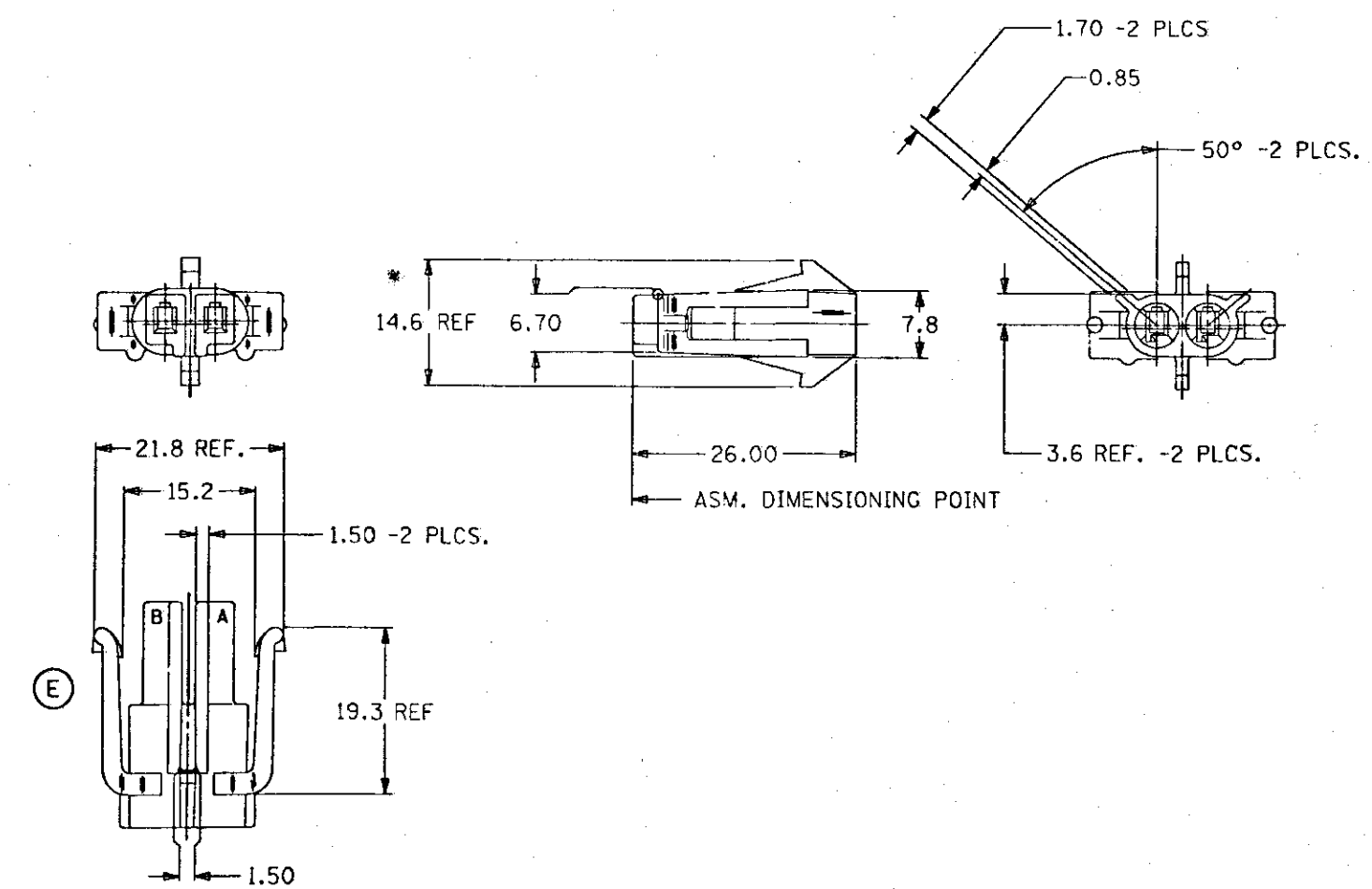
MATING BLADE INFORMATION

SCALE 4:1



MATING CONNECTOR INFORMATION

GENERAL NOTES
"D" DENOTES DIMENSIONS AND CHARACTERISTICS THAT ARE IMPORTANT TO THE FUNCTION AND/OR PROCESSING OF THE PART. IT DOES NOT NECESSARILY INDICATE AN SPC DIMENSION. THIS DRAWING HAS 6 SNOWCONES.



- NOTE — 1. CONNECTOR TO ACCEPT 12110576 CONNECTOR SEAL, IF USED.
2. CONNECTOR TO ACCEPT 12048074 TERMINAL WITH 12010295 CABLE SEAL AND 12110573 SECONDARY LOCK (TPA)-SEALED TERM. OR
CONNECTOR TO ACCEPT 12047883 TERMINAL (UNSEALED) AND 12110574 SECONDARY LOCK (TPA).
3. SEALING CODE 0.

WARNING
GEOMETRY MAY NOT BE
DRAWN TO SCALE

PED/INTEGRAL EMS 20		FILE SPEC: *****
THIRD ANGLE PROJECTION		METRIC DIMENSIONS ARE IN MILLIMETERS UNLESS OTHERWISE SPECIFIED.
CODE NO.	TOLERANCE UNLESS OTHERWISE SPECIFIED DECIMAL: ONE PLACE ± 0.3 TWO PLACE ± 0.15 ANGULAR ± 2°	
DWG. DATE 15MY90	SCALE NONE	DR. R MC CRACKEN 01NO90
EST. NO.	CK. R GLEASON	DATE 02NO90
REFERENCE NO. 12110572 "D" SIZE	APPR. STACY BRUSSALTS	DATE 02NO90
MATERIAL SPEC. NYLON 6/6, BLACK		DATE 10NO90
NAME CONN. 2F M/P 150		
PART NO. 12110572 OUTLINE DRAWING		SIZE D

DATE	SYM	REVISION RECORD	AUTHORITY	DR	CK
15MY90	A	P.E. DRAWING CREATION	900012	RHM	RG
18SE90	B	REVISED, ADDED PED & CAVITY LETTERS	136218	RHM	RG
19NO90	B1	ADDED MATING DETAIL INFORMATION	138285	RHM	RG
11DE90	B2	WAS PE024705 AND RELEASED	900005	WRS	EMB
29JA91	C	REVISED MATERIAL SPEC	139854	JR	
20MR91	D	PART NO. 12110572 REVISED AND TOLERANCE REVISED ON 1.50 AND 10.60 IN MATING CONN INFO.	141269	TN	
13SE94	E	REVISED - LOCK ARM & DIM. 4.60 ±0.50 WAS 4.89 ±0.20	161886	RLB	RLB

Mouser Electronics

Authorized Distributor

Click to View Pricing, Inventory, Delivery & Lifecycle Information:

[Aptiv:](#)
[12110572](#)