

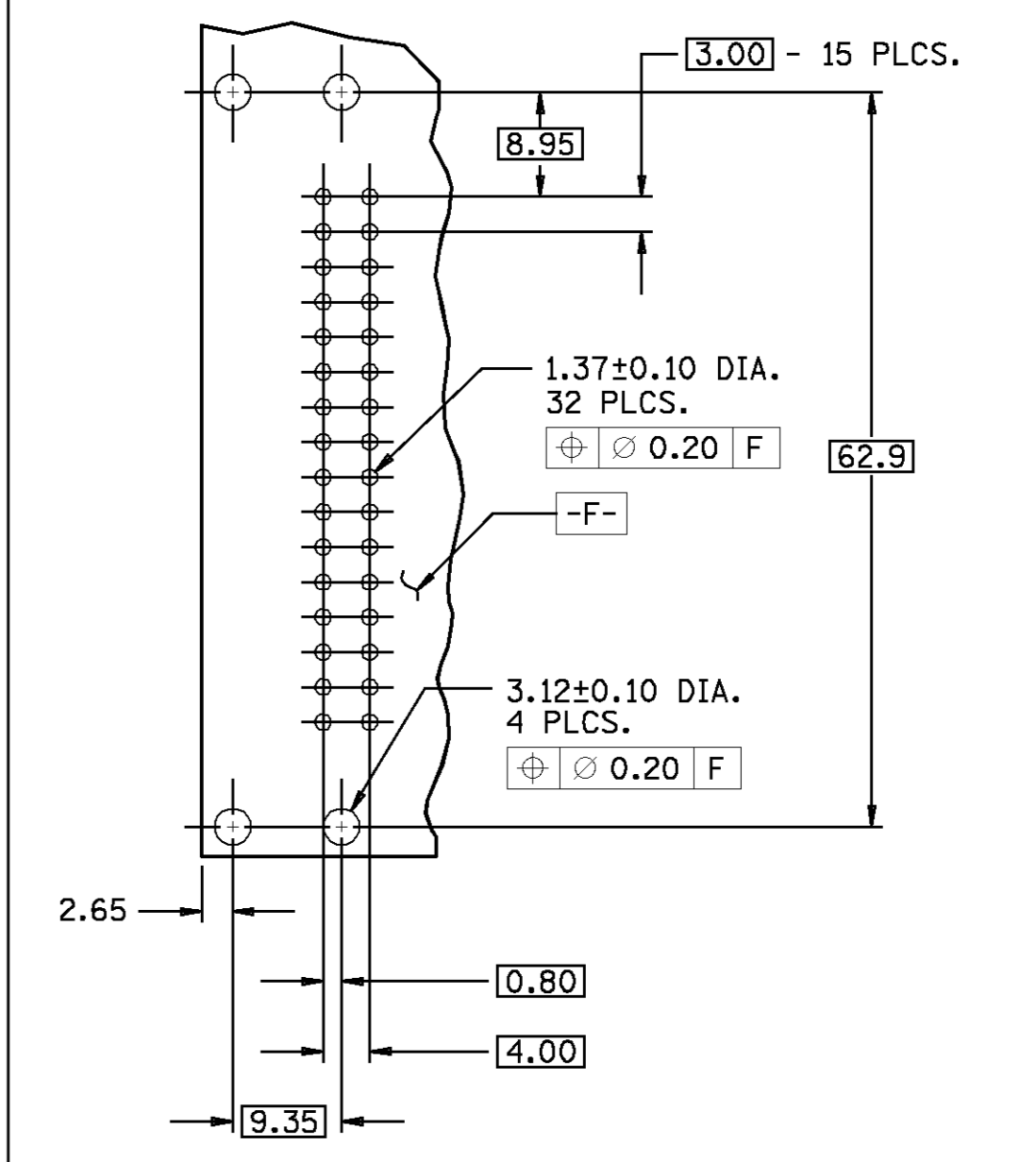
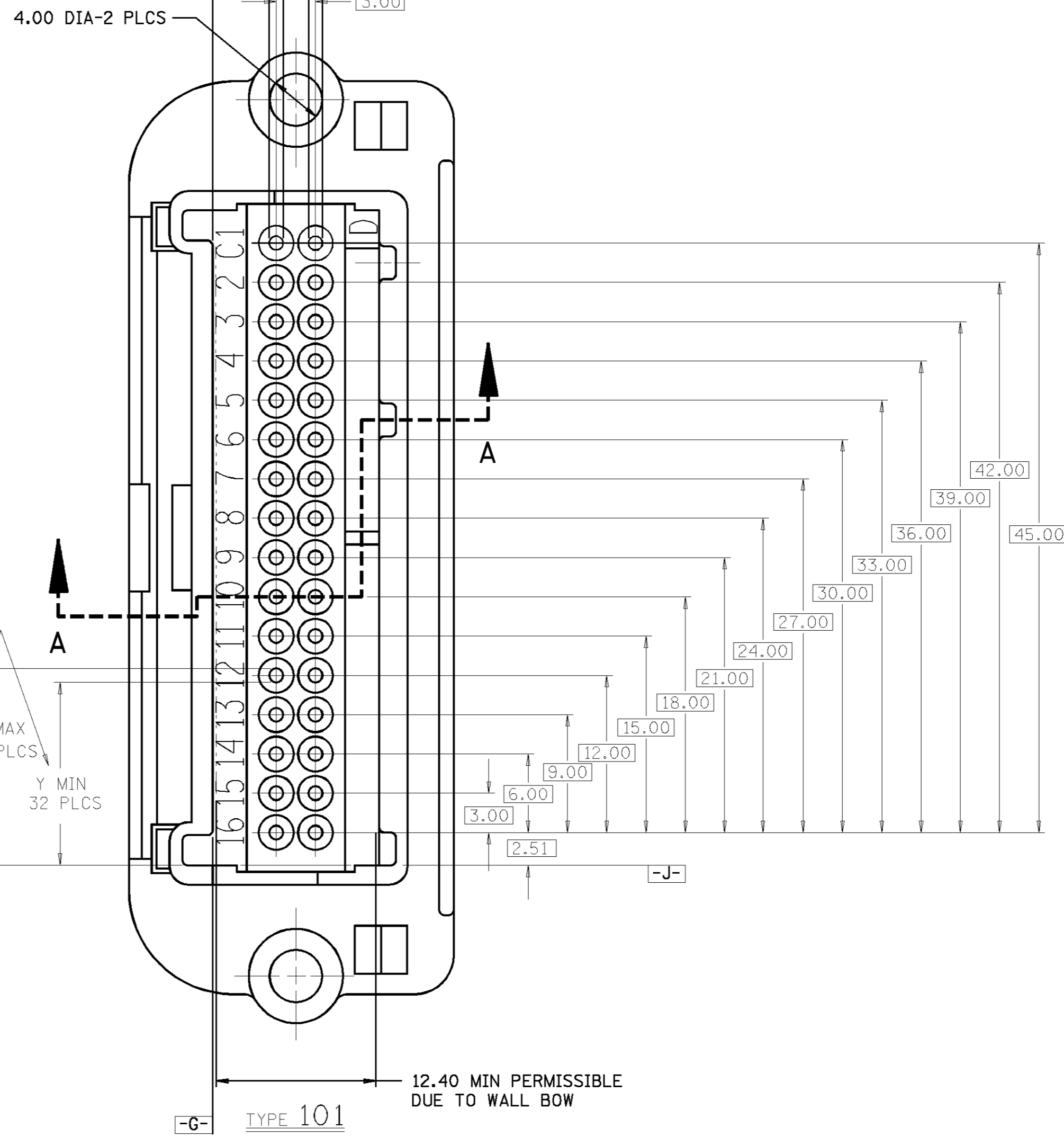
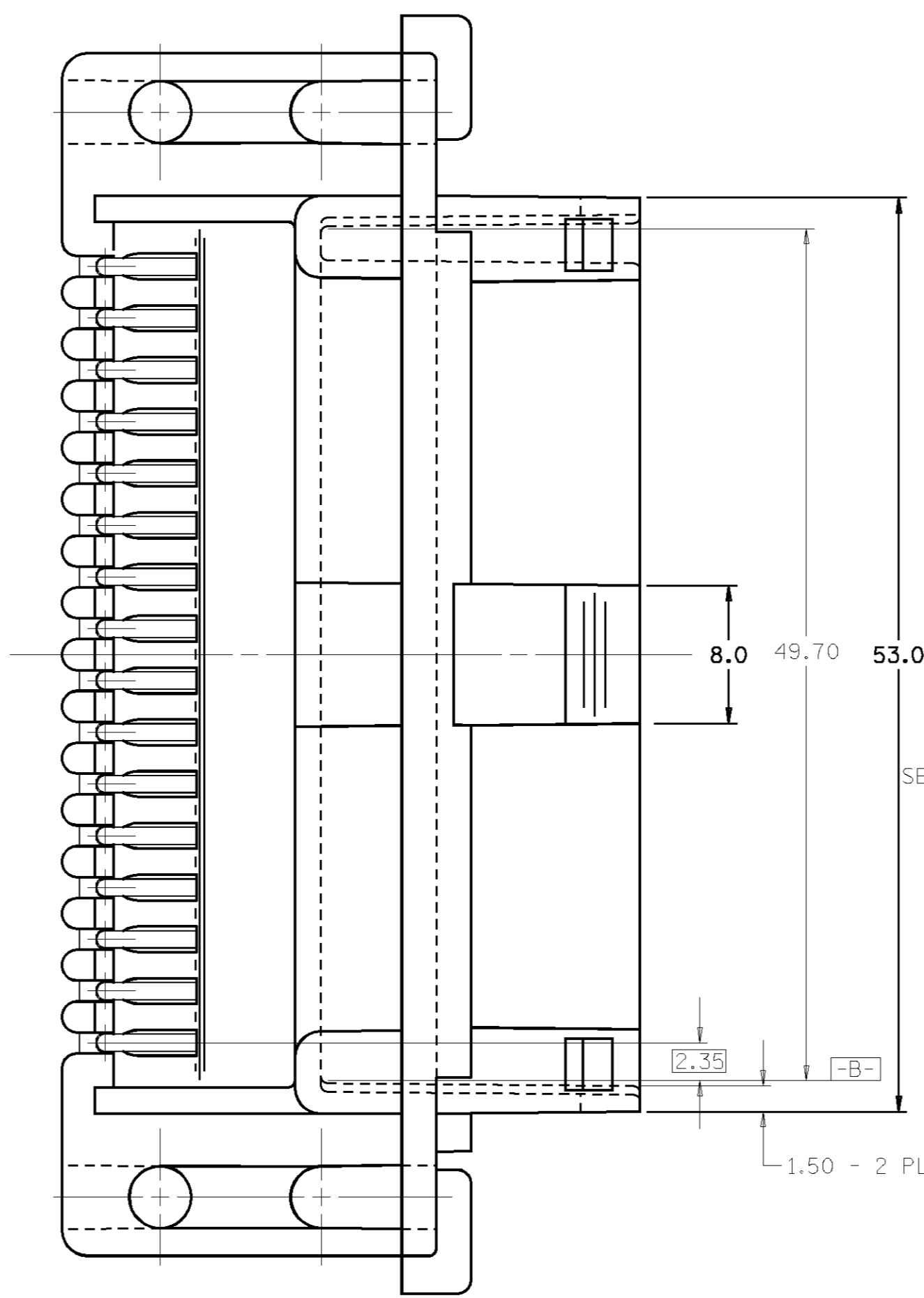
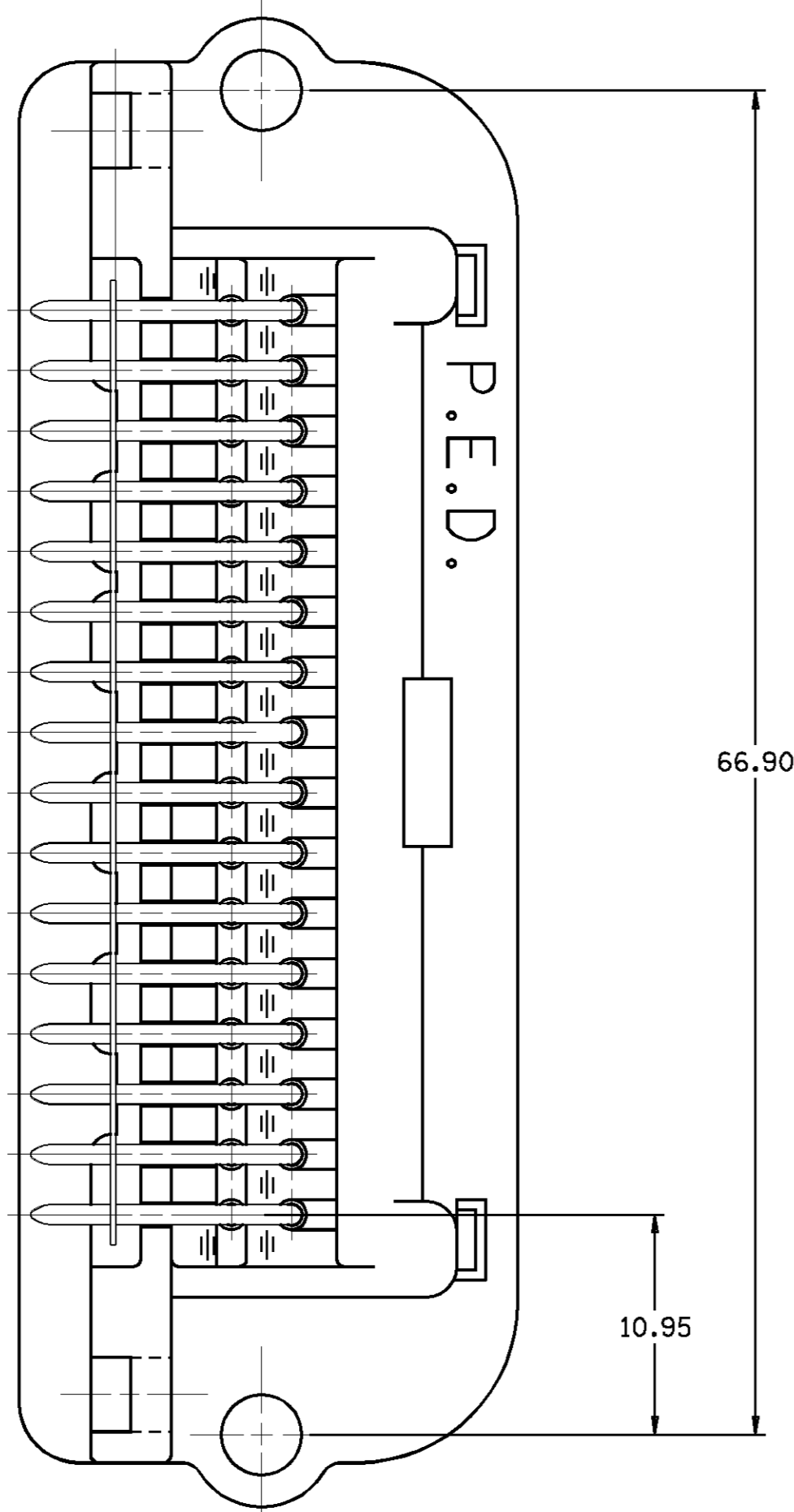
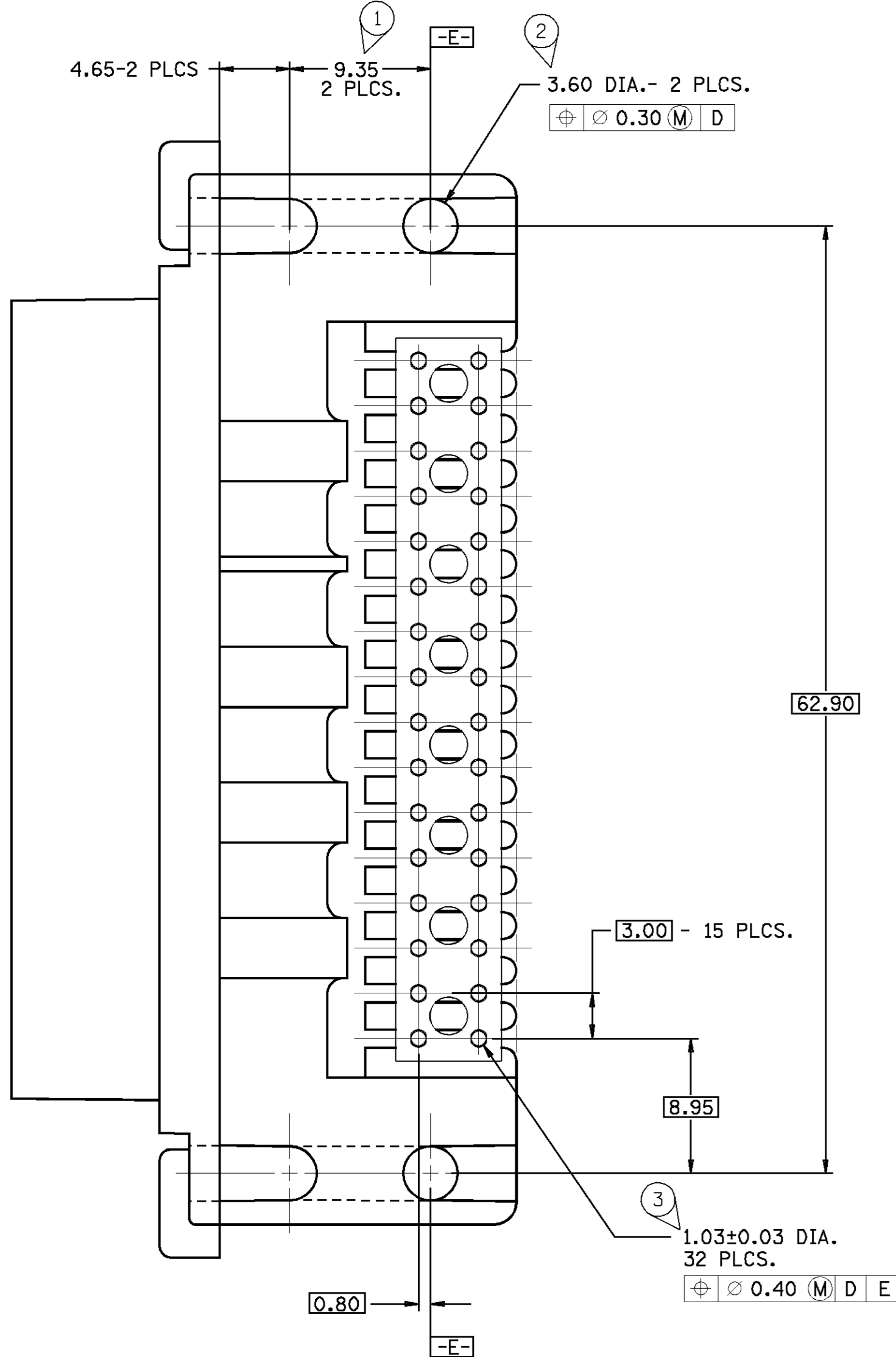
THIS DRAWING AND DESIGN VERSION CONSTITUTE A PROPRIETARY DESIGN AND IS NOT TO BE REPRODUCED OR REPRODUCED WITHOUT THE AUTHORITY OF PACKARD ELECTRIC DIVISION.

DO NOT SCALE

PART NO. 1211 0224

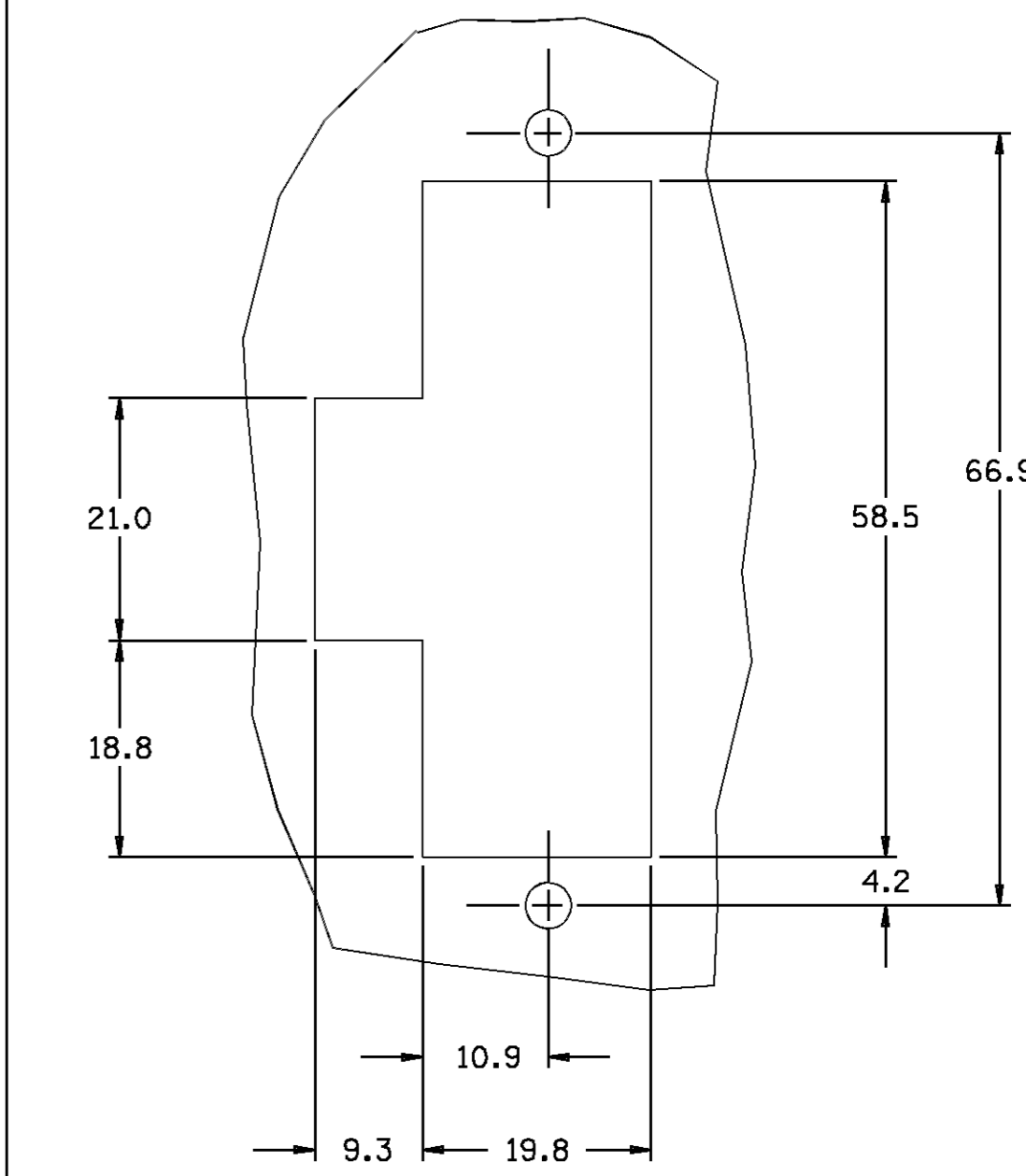
PART NO. 1211 0224

THESE DIMENSIONS TO BE MEASURED FROM DATUM F-G AT DATUM A, 16 PLCS



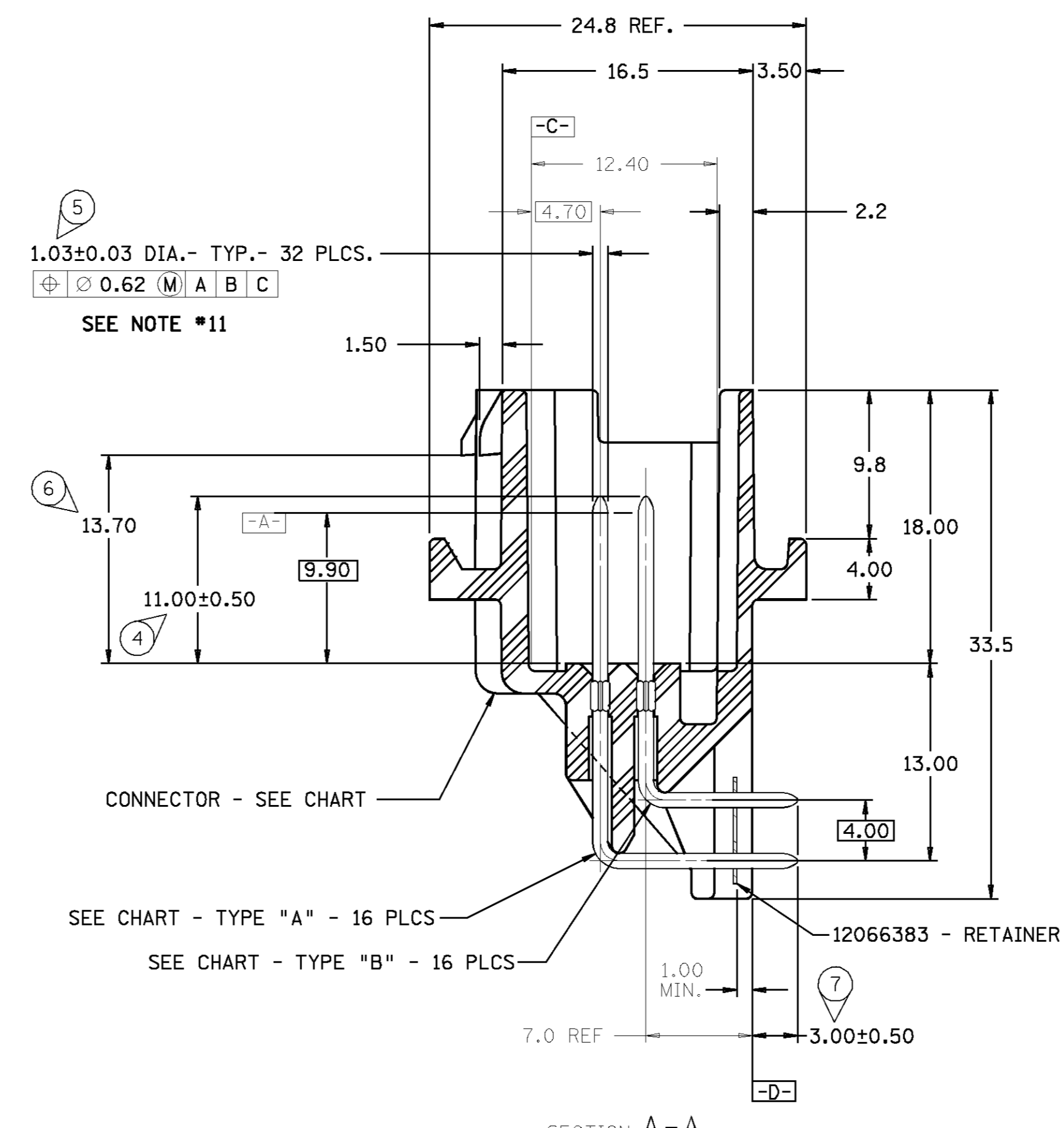
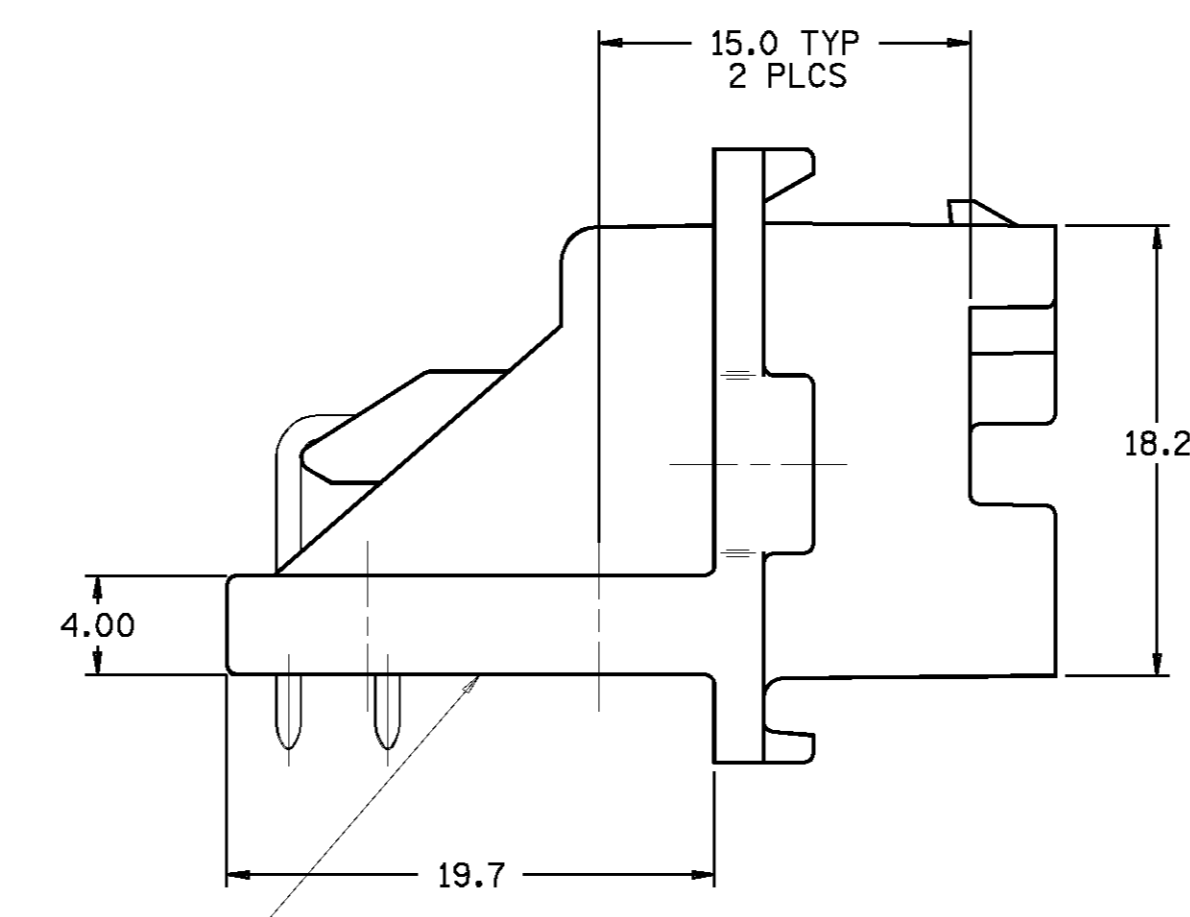
NOTES - 1. RECOMMENDED BOARD THICKNESS IS 1.50 MM.  
2. SOLDER - THRU HOLE RECOMMENDED.  
3. RECOMMENDED FASTENER #4-40.

MATING CIRCUIT BOARD DETAIL  
CONNECTOR MATING SIDE  
SCALE 2:1

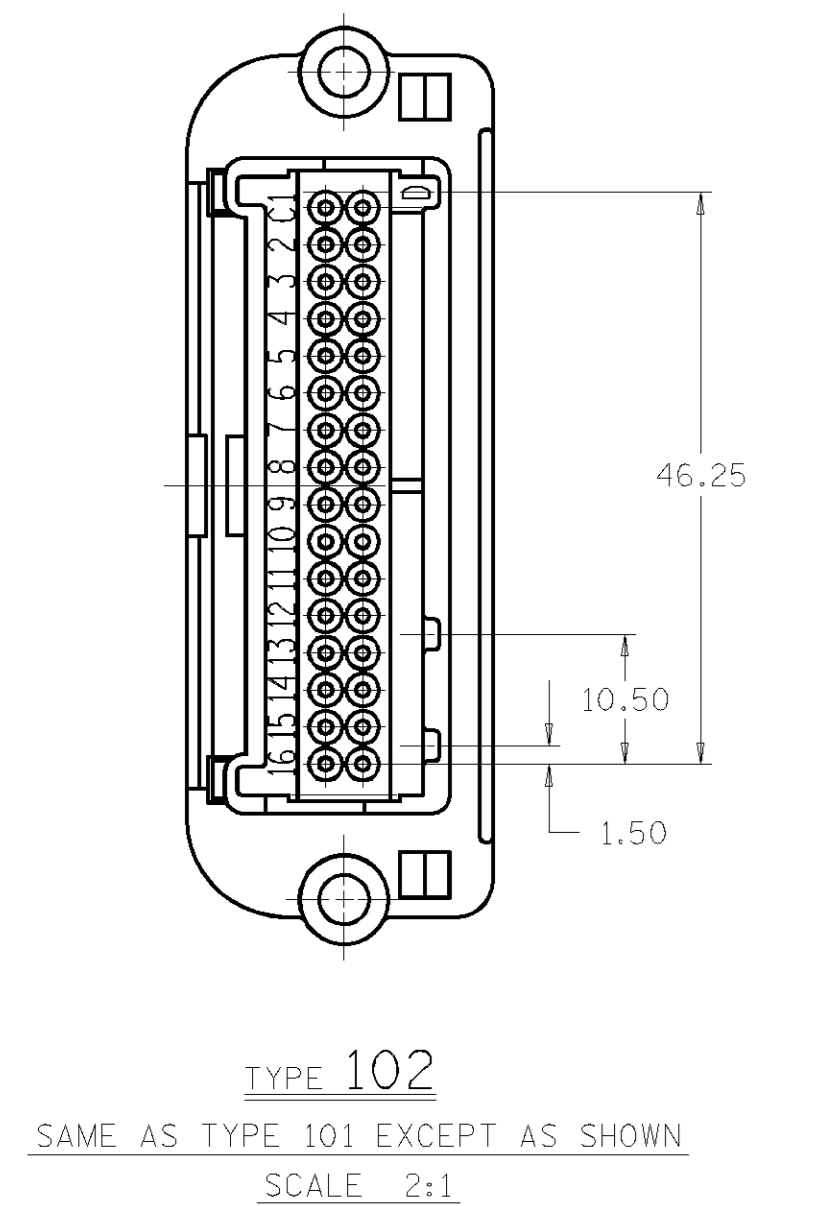


CASE OPENING  
SCALE 2:1  
1. RECOMMENDED FASTENER #4-40.  
2. CASE THICKNESS IS 1.27 MM.

NO DRAFT ON THIS SURFACE FOR DISTANCE SHOWN.



- NOTES - 1. DIMENSIONS ARE TO FACE OF VIEW SHOWN UNLESS OTHERWISE INDICATED.  
2. <D> DENOTES DIMENSIONS AND CHARACTERISTICS THAT ARE IMPORTANT TO THE FUNCTION AND/OR PROCESSING OF THE PART. IT DOES NOT NECESSARILY INDICATE AN SPC DIMENSION. THIS DRAWING HAS 7 SNOWCONES.  
3. SEE ESO-1505 FOR PACKAGING REQUIREMENTS.  
4. PIN SOLDERABILITY - SEE ESO-1503.  
5. SEE ESA-645-A FOR PERFORMANCE SPECIFICATIONS.  
6. MATING FEMALE CONNECTOR - SEE CHART.  
7. SEE CHART FOR MATING COMPONENT.  
8. THIS PART IS CONTROLLED FOR AUTOMATIC FEEDING AS DENOTED ON THE DRAWING WITH A "▲".  
9. THIS PART ACCEPTS CPA 12077899 OR EQUIVALENT.  
10. SEALING CODE O.  
11. THIS FEATURE CONTROL FRAME TO BE VERIFIED BY GAGING ONLY.  
12. THESE DIMENSIONS TO BE MEASURED FROM DATUM H-J AT DATUM A  
Y MIN = BASIC  $\bar{L}$  + 2.51 -0.84  
Y MAX = BASIC  $\bar{L}$  + 2.51 +0.84



CONN.	ASM.	REV.	STATUS	TYPE	CONNECTOR	TERMINALS	MATING CONN.	TYPICAL TERMINAL FOR FEMALE CONNECTOR
12129856	A			102	12110324 POLYESTER LT BLUE	12077897	12084179	12110207
12110323	C			102	12110324 POLYESTER LT BLUE	12065445	12065444	12110207
12110225	C	OBSOLETE		101	12110227 POLYESTER PINK	12065445	12110245	12089660

ZONE	DATE	SYN	REVISION RECORD	AUTHORITY	DR	CK
17N089			PE DRAWING CREATION	590012	JR	
13SE90			12110225 & 12110323 WERE PE010813 & PE03814; REVISED INDEX FEATURES AND RELEASED TO REV "B"	900005	JC	JC
07DE90			ALL PARTS-REVISED GRAPHICS OF 12110227 & 12110324 CONN-TO REV "C"	138616	JC	JC
12SE91			ALL PARTS - ADDED (9.90) DIA. REVISED HOW IDENTIFICATION LETTERS AND DIMS (4 PLCS) & RELOCATED DATUM (-J-) - NO REV UPDATE REQ'D	143787	BKD	BKD
14MY92			12129856 - RELEASED TO REV "A"	920005	BAR	BAR
11AU92			ALL PARTS - ADDED COLUMN "TYPICAL TERMINAL FOR FEMALE CONNECTOR" TO CHART - NO REV			
			1P DATE REQ'D	150174	WHP	WHP
11AU92			ADDED - DATUMS F, H, G, J, & NOTES 11 & 12 - NO REV UPDATE REQ'D	146274	WHP	WHP
11AU92			12110225 - OBSOLETE	920003	WHP	WHP
17FE93			O.C. WAS C-5129	930004	HH	HH

FILE SPEC	*****
THIRD ANGLE PROJECTION	
CODE NO.	6900
REV.	C-5171
DATE	17N089
SCALE	1:1
EST. NO.	
REFERENCE NO.	
MATERIAL SPEC.	SEE CHART
NAME	ASM CONN 32M MIC/P 100
PART NO.	1211 0224
SIZE	R

TOLERANCE UNLESS OTHERWISE SPECIFIED	ANGULAR ± °
DIMENSIONS ARE IN MILLIMETERS UNLESS OTHERWISE SPECIFIED.	
ONE PLACE ± 0.3	17N089
TWO PLACE ± 0.15	
THREE PLACE ± 0.075	
FOUR PLACE ± 0.038	
FIVE PLACE ± 0.019	
SIX PLACE ± 0.010	
SEVEN PLACE ± 0.005	
EIGHT PLACE ± 0.0025	
NINE PLACE ± 0.0013	
TEN PLACE ± 0.0006	

PACKARD ELECTRIC

# Mouser Electronics

Authorized Distributor

Click to View Pricing, Inventory, Delivery & Lifecycle Information:

[Aptiv:](#)

[12110323](#)