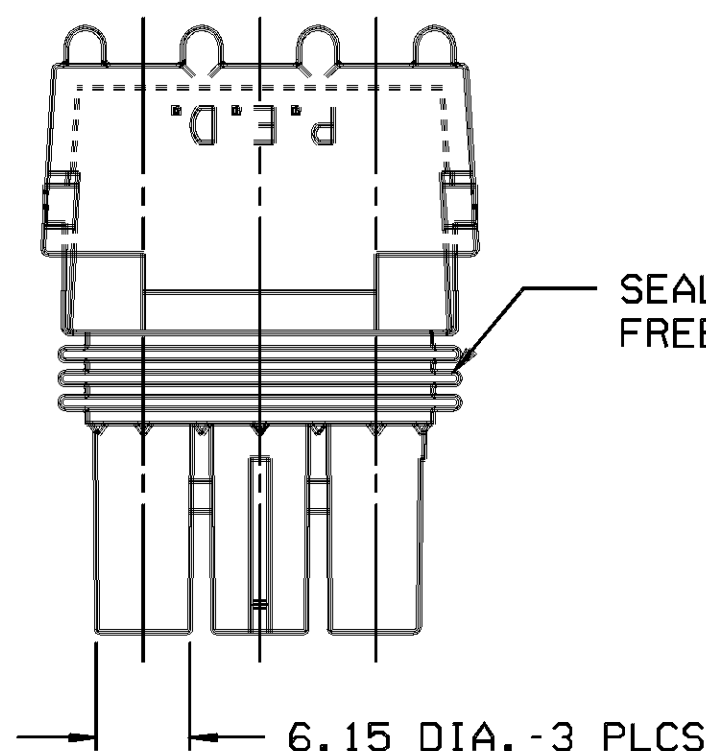
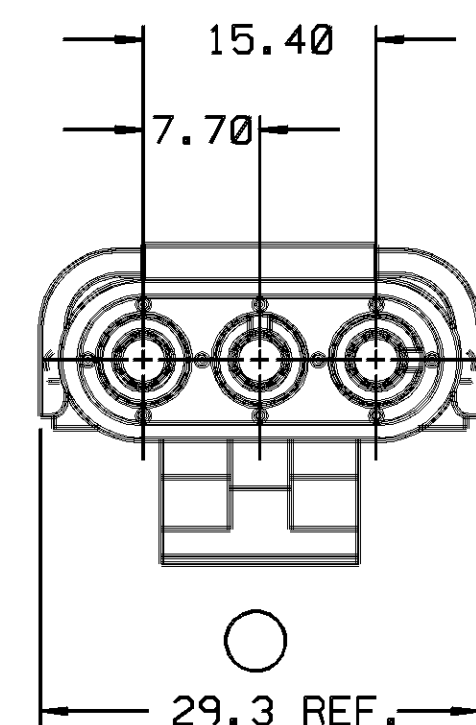


THIS DRAWING AND DESIGN HEREON CON-
STITUTES A PROPRIETARY DESIGN OF
PACKARD ELECTRIC DIVISION AND IS NOT
TO BE DUPLICATED OR REPRODUCED WITH-
OUT AUTHORITY OF PACKARD ELECTRIC
DIVISION.

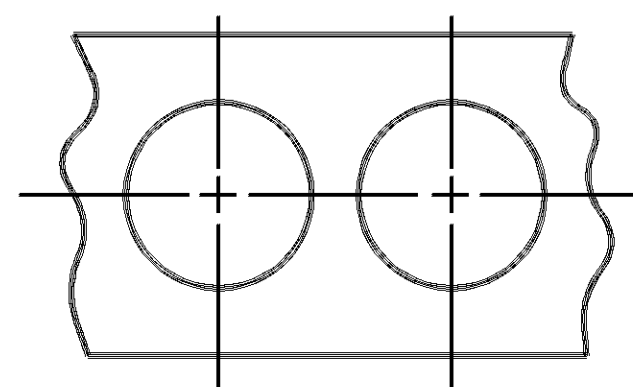
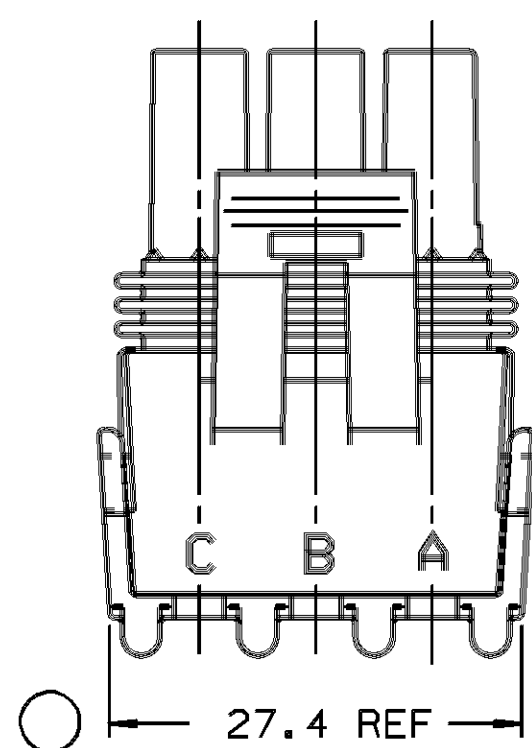
DO NOT SCALE



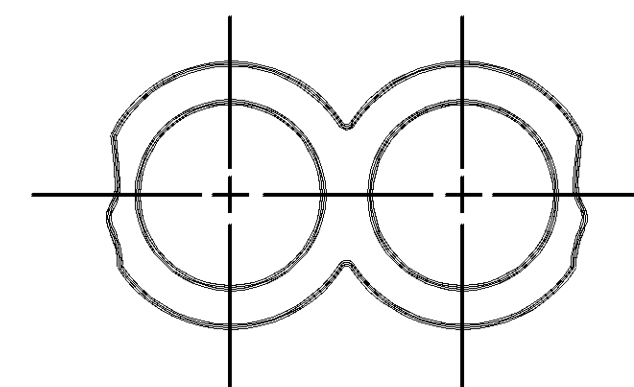
- SEALING RIBS MUST BE
FREE OF DEFECTS.



INDEX CODE
- 430 -
(ALSO SEE HANDBOOK)

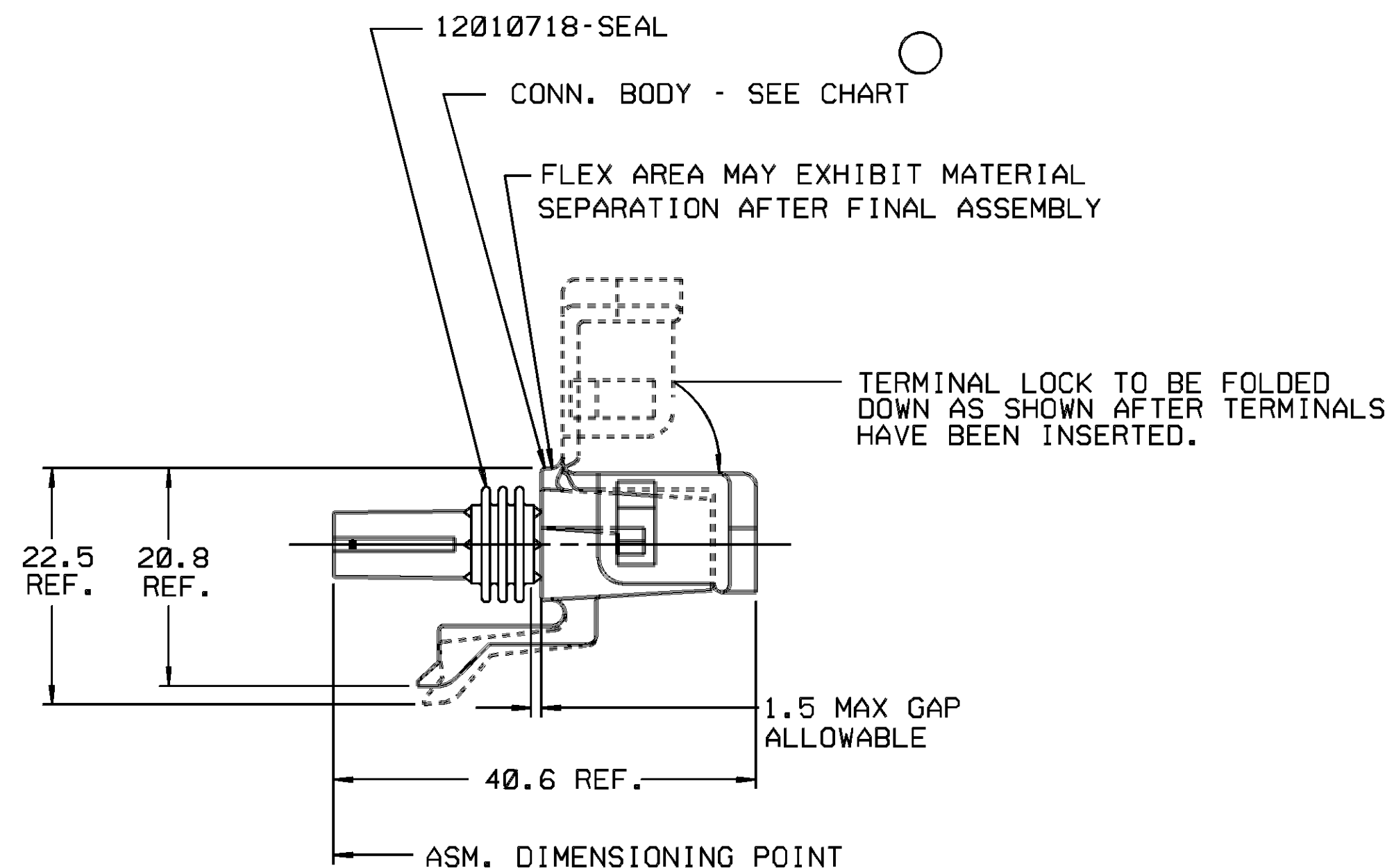


STANDARD CONSTRUCTION



OPTIONAL CONSTRUCTION

CABLE END VIEW OF CONN. BODY

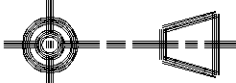


- NOTES— 1. USE FEMALE TERMINAL 12089188 OR EQUIVALENT FOR "IN LINE" APPLICATIONS. USE MALE TERMINAL 12089040 OR EQUIVALENT FOR PANEL MOUNT APPLICATIONS.
2. USE CABLE SEAL 12015323 OR EQUIVALENT.
3. MATING PART - SEE CHART.
4. WHEN PARTS ARE SHIPPED THEY MUST BE PACKED IN PLASTIC BAGS OR SHIPPING CONTAINERS MUST BE LINED WITH PLASTIC LINERS. BAGS OR LINERS MUST BE SEALED TO AVOID ENTRY OF FOREIGN MATTER.
5. SEALING CODE 3.
6. WHEN DESIGNING A PART TO MATE TO THIS WEATHER PACK CONNECTOR, REQUEST THE LATEST COPY OF DRAWING NUMBER 12020084 FROM THE PACKARD ELECTRIC DIVISION.

12103771	A		12103770	ASM CONN 3M W/P TWR	DEVICE	12089040/M	DEVICE
12041332	A		12041326	ASM CONN 3F W/P TWR	IN-LINE	12089188/F	12015442 PLUS 12015174 INSERT
12015796	A		12015786	ASM CONN 3F W/P TWR	IN-LINE	12089188/F	12015442 PLUS 12015174 INSERT
ASM PART NUMBER	REV	STATUS	CONNECTOR BODY	STANDARD DESCRIPTION	APPLICATION	REF # TERM/GENDER	MATING PART

[illegible]

PART NO.
1210 3632

PED / INTERGRAPH MICROSTATION		FILE: ***** DGN: ***** *****SYTIME*****	
THIRD ANGLE PROJECTION 		METRIC DIMENSIONS ARE IN MILLIMETERS UNLESS OTHERWISE SPECIFIED.	
CODE NO. 6900		TOLERANCE UNLESS OTHERWISE SPECIFIED DECIMAL: ONE PLACE \pm 0.3 ANGULAR \pm 2° TWO PLACE \pm 0.15	
Q.C. - C-5110		DR. F.DAVID SILVIO 230C90	
DWG. DATE 230C90	SCALE NONE		
EST. NO.		CK. F.DAVID SILVIO	DATE 230C90
REFERENCE NO.		APPR. ALEX R HERMANN	DATE 250C90
		APPR.	DATE
MATERIAL SPEC.			
SEE DWG.			
NAME ASM CONN 3 W/P TWR			
PART NO. 1210		3632	
		SIZE C	

1 150

PACKARD ELECTRIC

Mouser Electronics

Authorized Distributor

Click to View Pricing, Inventory, Delivery & Lifecycle Information:

[Aptiv:](#)

[12103771](#) [12041332](#)