

PART NO.
1209 2159

MATERIAL SPECIFICATIONS

MINIMUMS

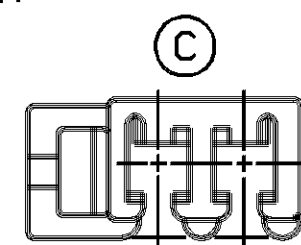
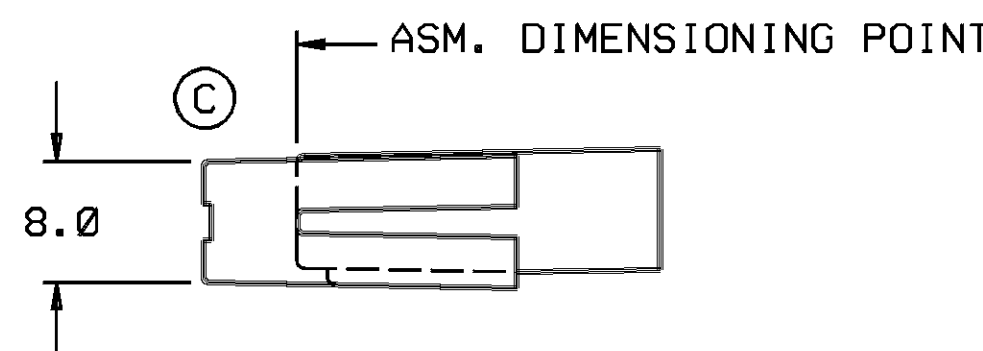
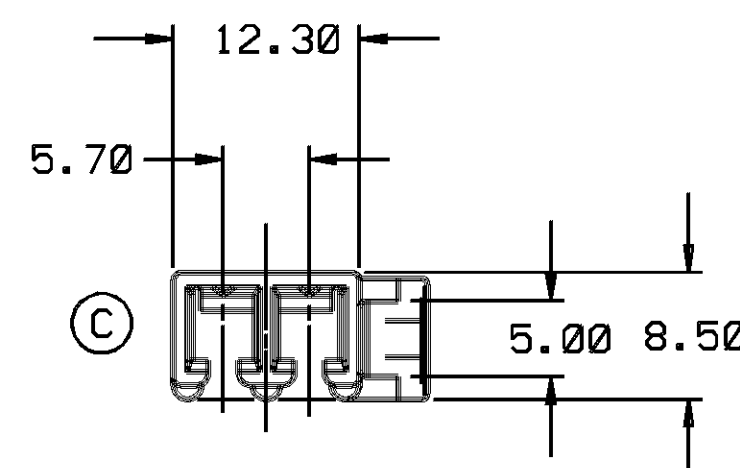
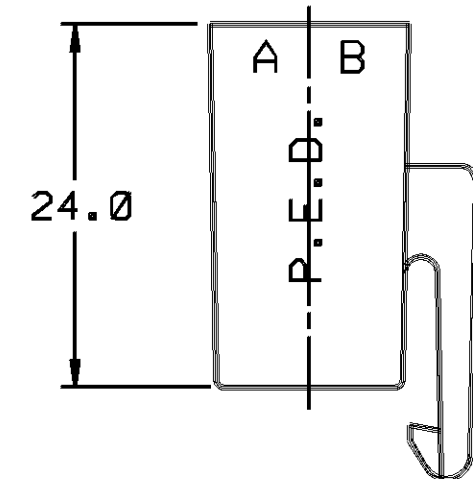
ELECTRICAL CONDUCTIVITY - > 20% IACS @ 20°C. USE OF A MATERIAL WITH CONDUCTIVITY < 20% IACS MUST BE APPROVED BY PACKARD ELECTRIC MATERIALS ENGINEERING.

TENSILE STRENGTH - 407 MPA

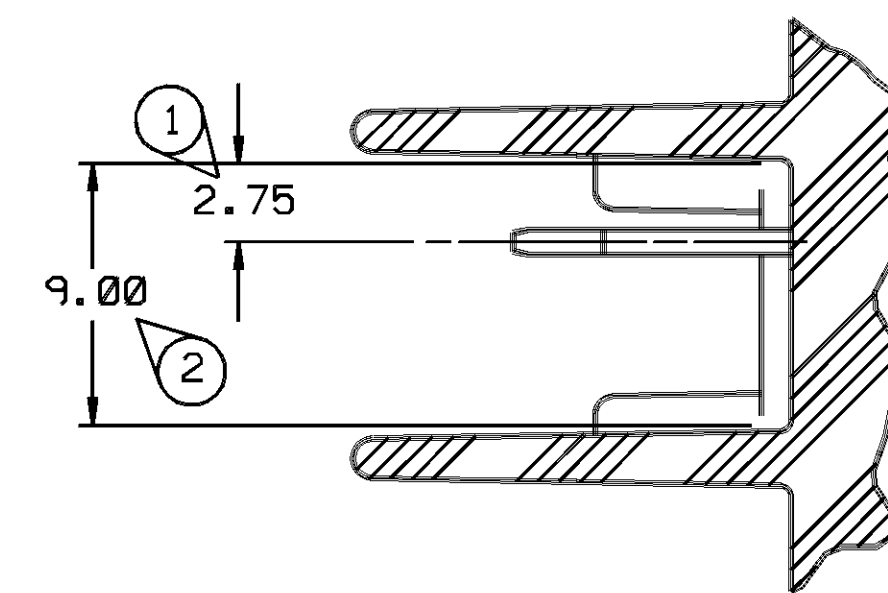
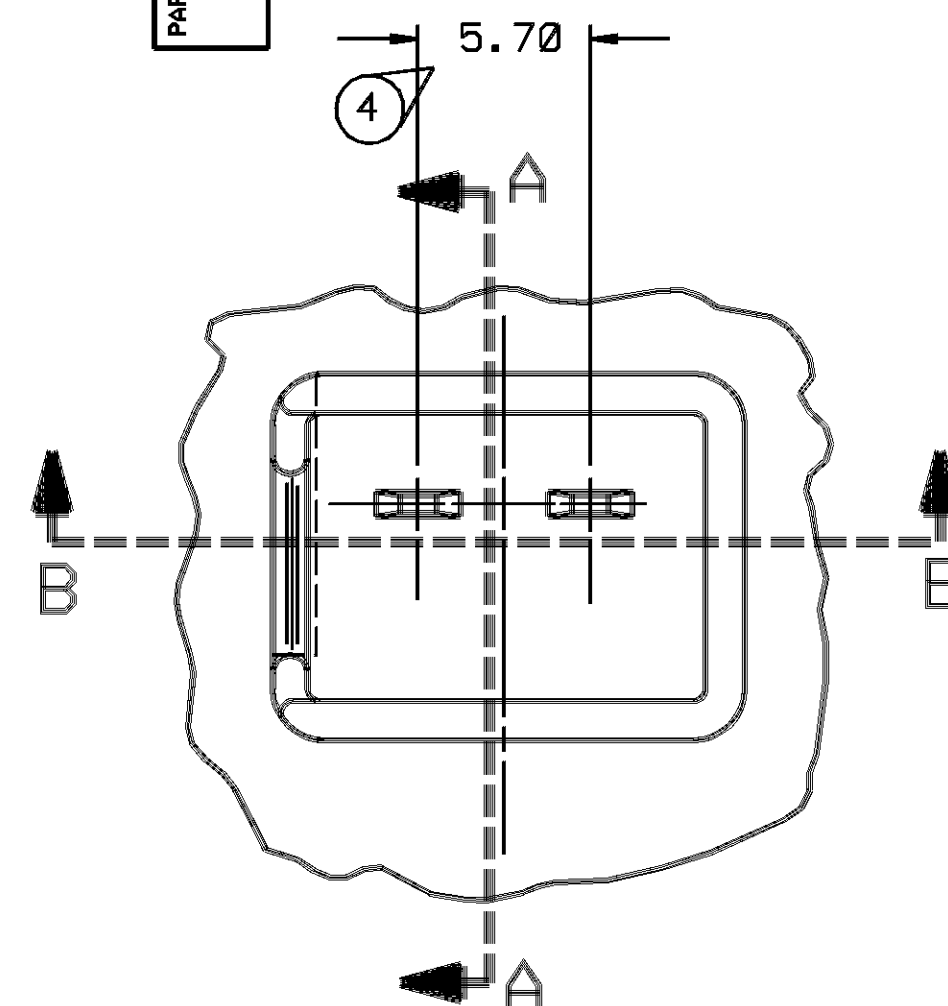
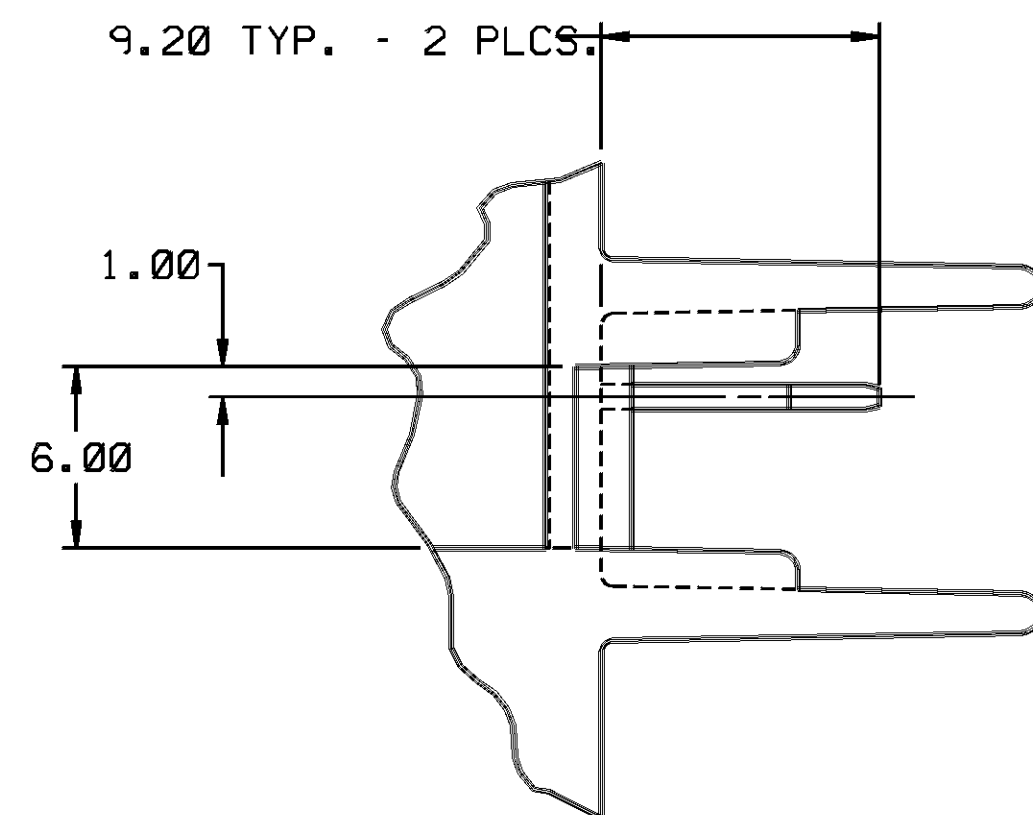
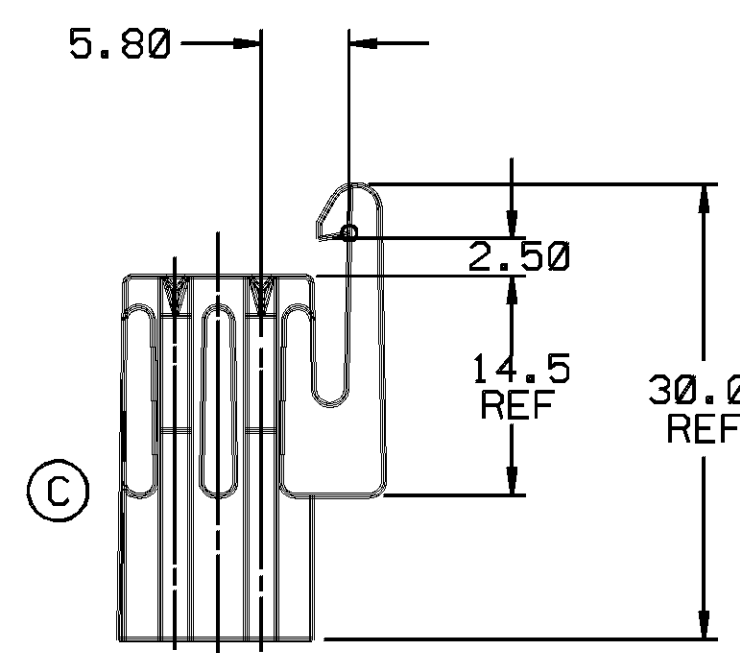
PLATING - FOR LOW ENERGY (< 5V) AND NON-PASSENGER COMPARTMENT POWER CIRCUITS, 0.0050±0.0025 MM THICK TIN. FOR MATERIALS CONTAINING 10% OR MORE ZINC, AN UNDERPLATE OF COPPER 0.0050±0.0025 MM THICK IS REQUIRED.

MATING BLADE INFORMATION

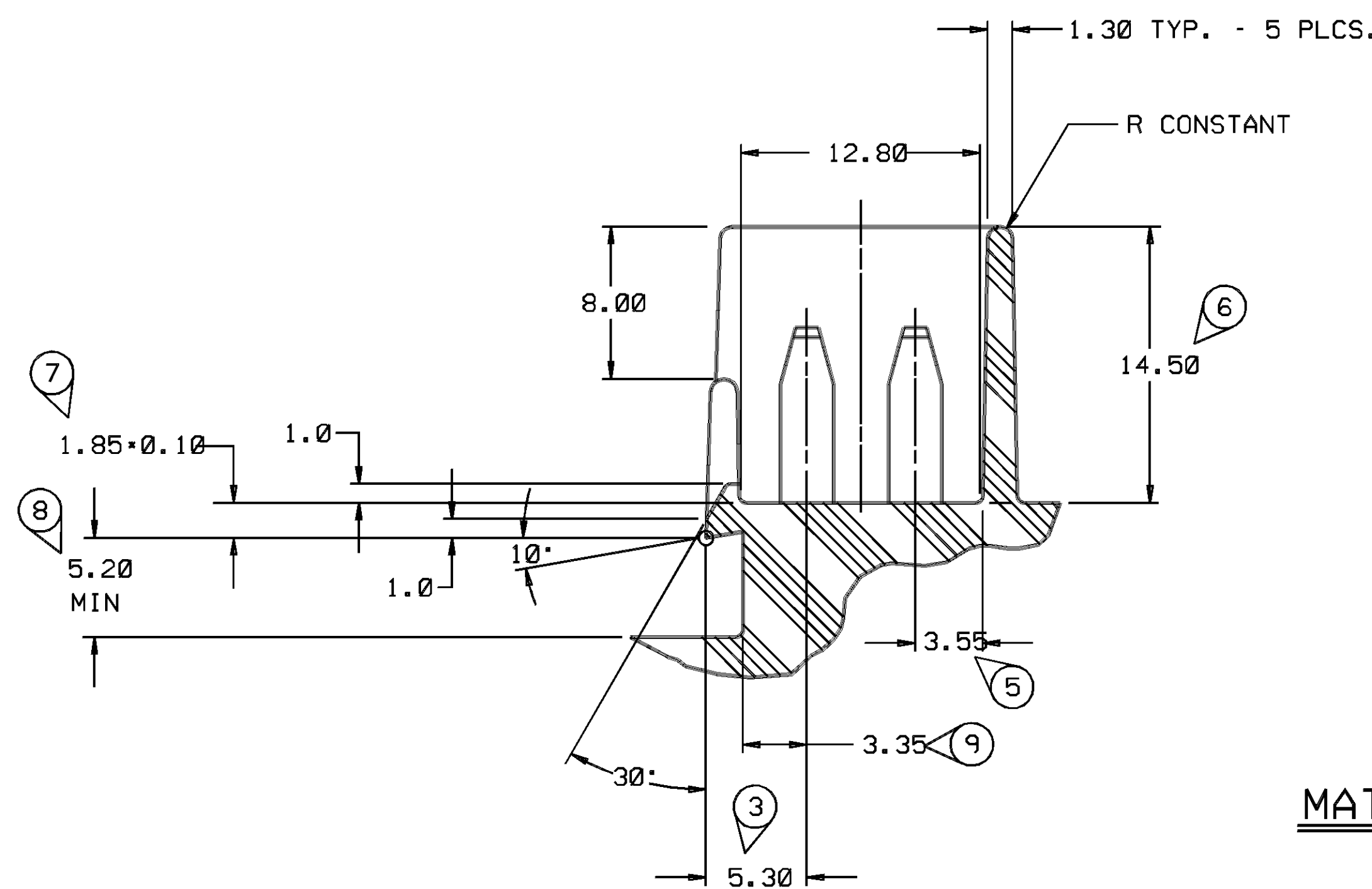
SCALE 8:1



NOTES — 1. CAVITIES TO ACCEPT TERMINAL 12010624 OR EQUIVALENT.
2. MATING DEVICE - DELCO REMY - PWM SOLENOID OR EQUIVALENT.
3. SEALING CODE Ø.



SECTION A-A



SECTION B-B

NOTES

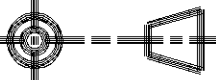
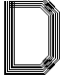
- 1. ALL RADII 0.40 UNLESS OTHERWISE SPECIFIED.
2. DIMENSIONS ARE TO THE FACE OF VIEW SHOWN, UNLESS OTHERWISE INDICATED.
3. 1° DRAFT ON ALL INSIDE AND OUTSIDE SURFACES, UNLESS OTHERWISE SPECIFIED.
4. SEALING CODE "0", (UNSEALED).
5. "⊙" DENOTES DIMENSIONS AND CHARACTERISTICS THAT ARE IMPORTANT TO THE FUNCTION AND/OR PROCESSING OF THE PART. IT DOES NOT NECESSARILY INDICATE AN SPC DIMENSION. THIS DRAWING HAS 9 SNOWCONES.

MATING CONNECTOR INFORMATION

SCALE 4 : 1

RECOMMENDED SHROUD MATERIAL

NYLON 66 OR EQUIVALENT

P E D / N I R G A H M I C R O S T A N		FILE SPEC:		***** DONOR SPECIFICATION ***** *****SYTIME*****	
THIRD ANGLE PROJECTION 		METRIC DIMENSIONS ARE IN MILLIMETERS UNLESS OTHERWISE SPECIFIED.			
CODE NO. 6900		TOLERANCE UNLESS OTHERWISE SPECIFIED DECIMALS ONE PLACE ± 0.3 TWO PLACE ± 0.15			
DWG. DATE 07SE88		SCALE NONE		DR. T. HALL 07SE88	
EST. NO.		CK. F. HESTON		DATE 30NO88	
REFERENCE NO. SDR166 12092159D* SIZE		APPR. D. KEILHOL		DATE 01DE88	
MATERIAL SPEC. NYLON 66 HEAT STABILIZED-BLACK		APPR. T. E. GENT		DATE 01DE88	
NAME CONN 2F M/P 280 P2S					
PART NO. 12092159		SIZE 			
OUTLINE DRAWING					

Mouser Electronics

Authorized Distributor

Click to View Pricing, Inventory, Delivery & Lifecycle Information:

[Aptiv:](#)

[12092159](#)