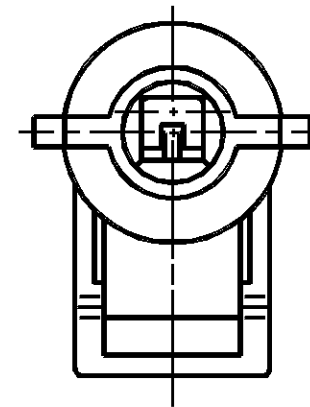
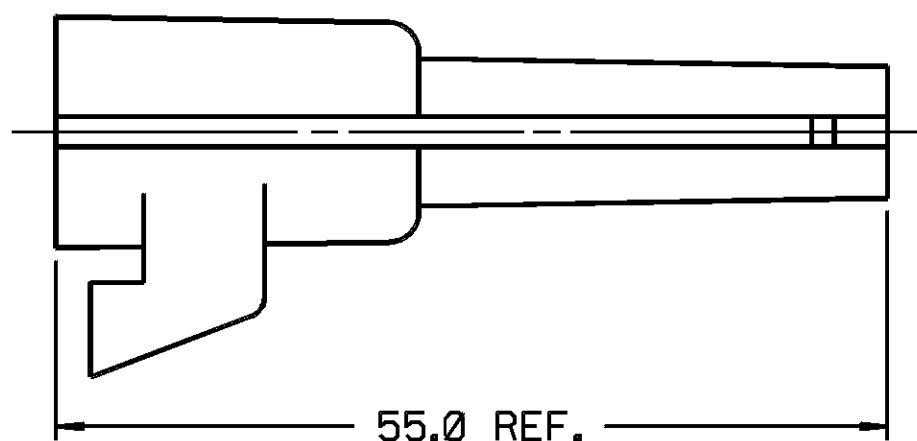
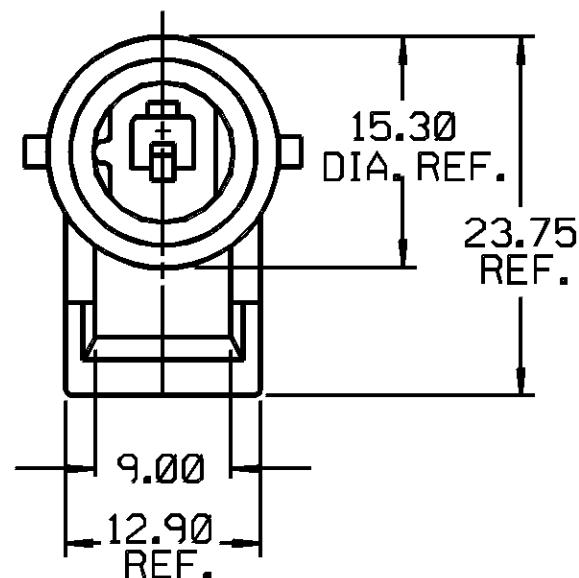
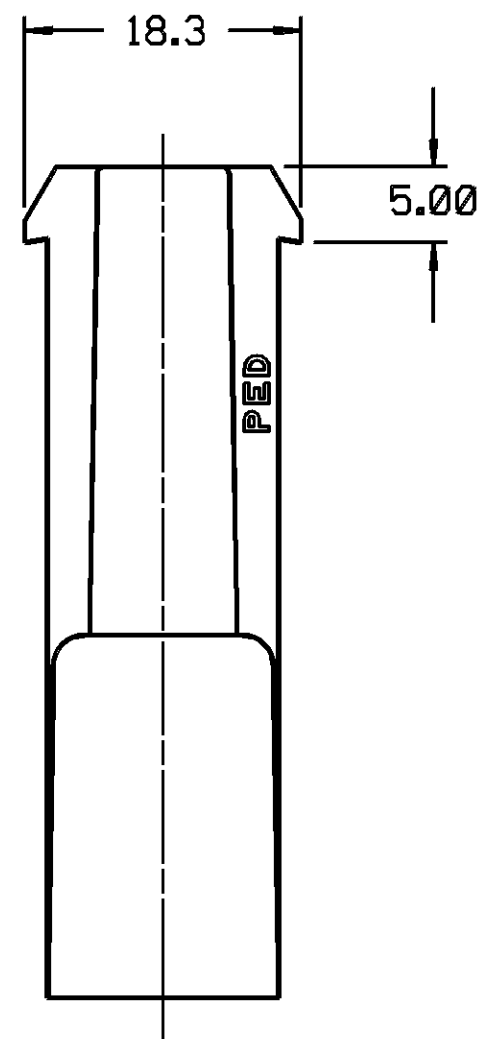


THIS DRAWING AND DESIGN HEREON CON-  
STITUTES A PROPRIETARY DESIGN OF  
PACKARD ELECTRIC DIVISION AND IS NOT  
TO BE DUPLICATED OR REPRODUCED WITH-  
OUT AUTHORITY OF PACKARD ELECTRIC  
DIVISION.

DO NOT SCALE

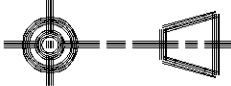
**PACKARD ELECTRIC DIVISION**  
**GENERAL MOTORS CORPORATION**  
**WARREN, OHIO**



**NOTES**—1. CAVITY TO ACCEPT 12040559 TERMINAL OR EQUIVALENT.  
2. MATING CONNECTOR 12089912 OR EQUIVALENT.  
3. CONNECTOR TO ACCEPT 12065249 SECONDARY LOCK OR EQUIVALENT.  
4. USE 12052834 CONNECTOR POSITION ASSURANCE.  
5. SEALING CODE 3.

[illegible]

PART NO. 1208 9914

PED / <b>GRAPH</b> <b>MICROSTATION</b>		FILE SPEC: DGN#SPECIFICATION***** *****SYTIME*****	
THIRD ANGLE PROJECTION 		<b>METRIC</b> DIMENSIONS ARE IN MILLIMETERS UNLESS OTHERWISE SPECIFIED.	
CODE NO. 6900		TOLERANCE UNLESS OTHERWISE SPECIFIED DECIMAL: ONE PLACE $\pm 0.3$ TWO PLACE $\pm 0.15$	
Q.C.		ANGLE $\pm 2^\circ$	
DWG. DATE 20JL89	SCALE NONE	DR. JOSEPH E. HOUGELMAN 20JL89	
EST. NO.		CK. JOSEPH E. HOUGELMAN	DATE 20JL89
REFERENCE NO. 12089915 'D' SIZE		APPR.	DATE
MATERIAL SPEC. NYLON 66 - MED GRAY			
NAME CONN 1M M/P 280			
PART NO. 1208 9914 OUTLINE DRAWING			SIZE C

PACKARD ELECTRIC

# Mouser Electronics

Authorized Distributor

Click to View Pricing, Inventory, Delivery & Lifecycle Information:

[Aptiv:](#)  
[12089914](#)