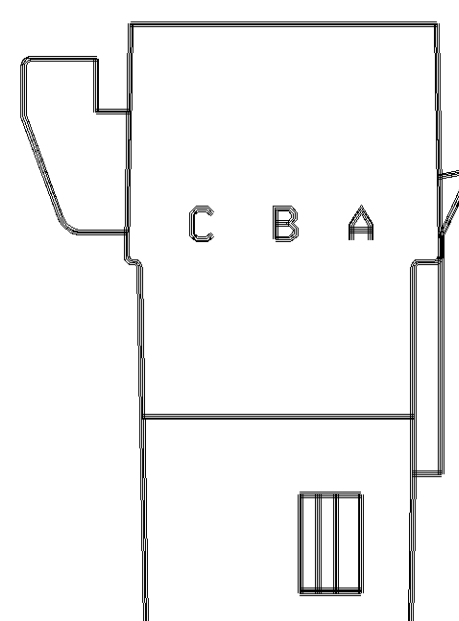
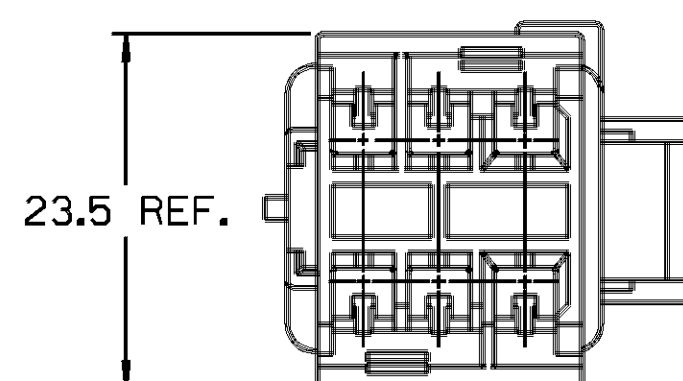
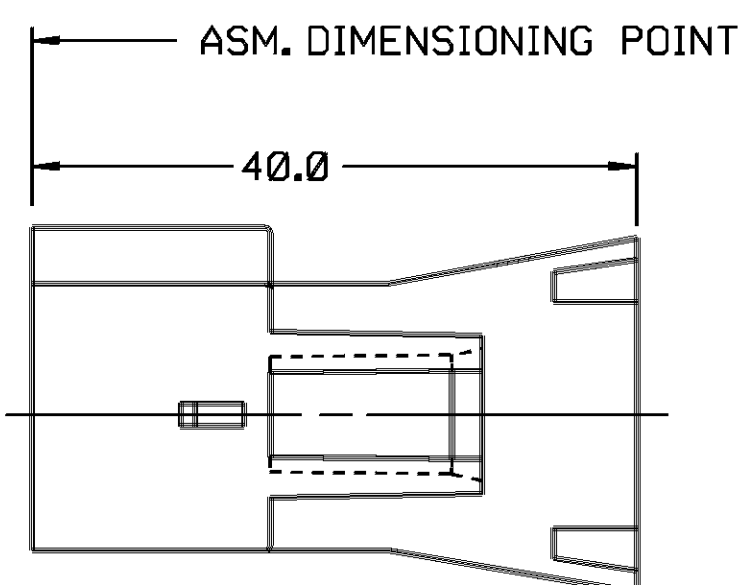
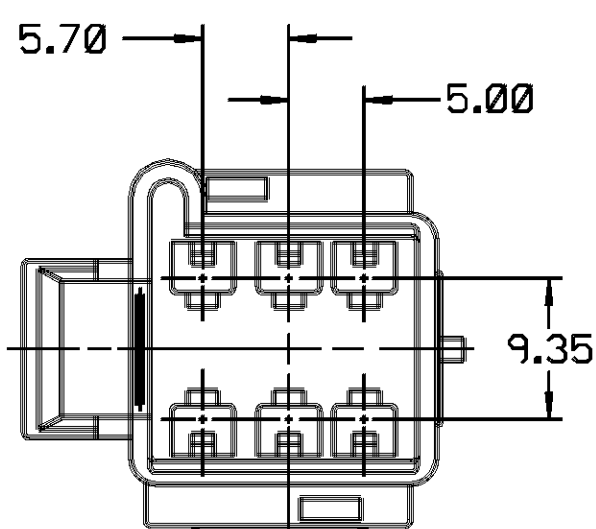
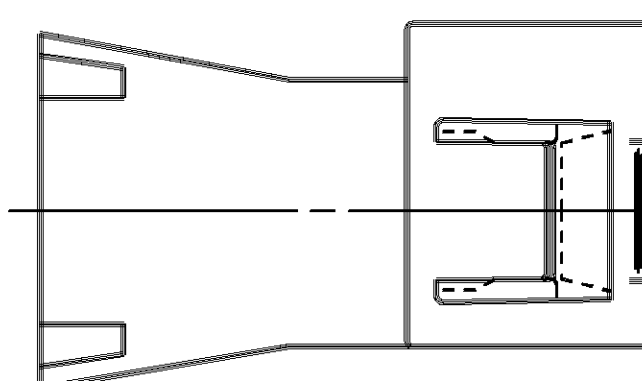
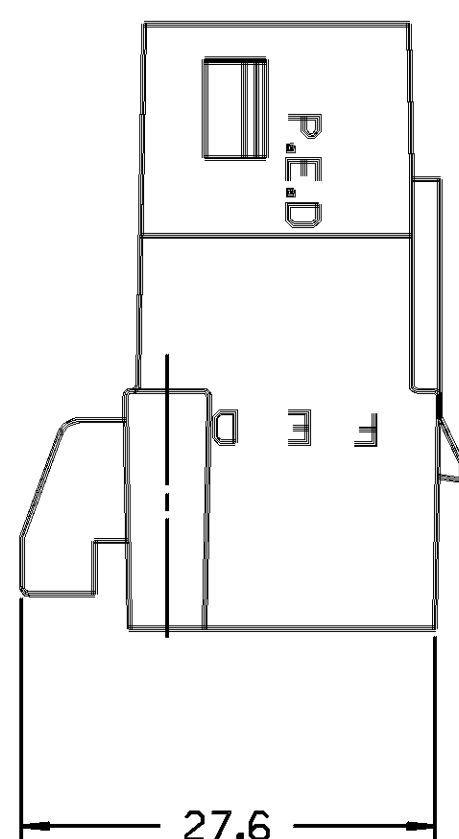


THIS DRAWING AND DESIGN HEREON CON-
STITUTES A PROPRIETARY DESIGN OF
PACKARD ELECTRIC DIVISION AND IS NOT
TO BE DUPLICATED OR REPRODUCED WITH-
OUT AUTHORITY OF PACKARD ELECTRIC
DIVISION.

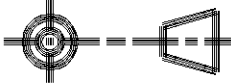

HARRIS ELECTRIC DIVISION
GENERAL MOTORS CORPORATION
WARREN, OHIO



NOTES — 1. CAVITIES A,B,E & F TO ACCEPT 12034047 TERMINAL OR EQUIVALENT.
2. CAVITIES C & D TO ACCEPT 12020117 TERMINAL OR EQUIVALENT.
3. CONNECTOR TO ACCEPT 12064755 SECONDARY LOCK OR EQUIVALENT (2 PER CONNECTOR)
4. MATING CONNECTOR IS 12066379 OR EQUIVALENT.
5. THIS CONNECTOR TO ACCEPT C.P.A. 12052834 OR EQUIVALENT.

[illegible]

PART NO.
1208 9745

PED / MICROGRAPH METRIC		FILE SPEC: ***** DGN SPECIFICATION***** *****SYTIME*****	
THIRD ANGLE PROJECTION 		METRIC DIMENSIONS ARE IN MILLIMETERS UNLESS OTHERWISE SPECIFIED.	
CODE NO. 6900,6901		TOLERANCE UNLESS OTHERWISE SPECIFIED DECIMAL: ANGULAR $\pm 2^\circ$ ONE PLACE ± 0.3 TWO PLACE ± 0.15	
Q.C.		DR. F. DAVID SILVIO 12JN89	
DWG. DATE 12JN89	SCALE NONE		
EST. NO.		CK.	DATE
REFERENCE NO. 12077545 'R' SIZE		APPR.	DATE
MATERIAL SPEC. NYLON 6 - LT. GREEN			
NAME CONN 6M M/P 280			
PART NO. 1208 9745	OUTLINE DRAWING		SIZE 

PACKARD ELECTRIC

Mouser Electronics

Authorized Distributor

Click to View Pricing, Inventory, Delivery & Lifecycle Information:

[Aptiv:](#)

[12089745](#)