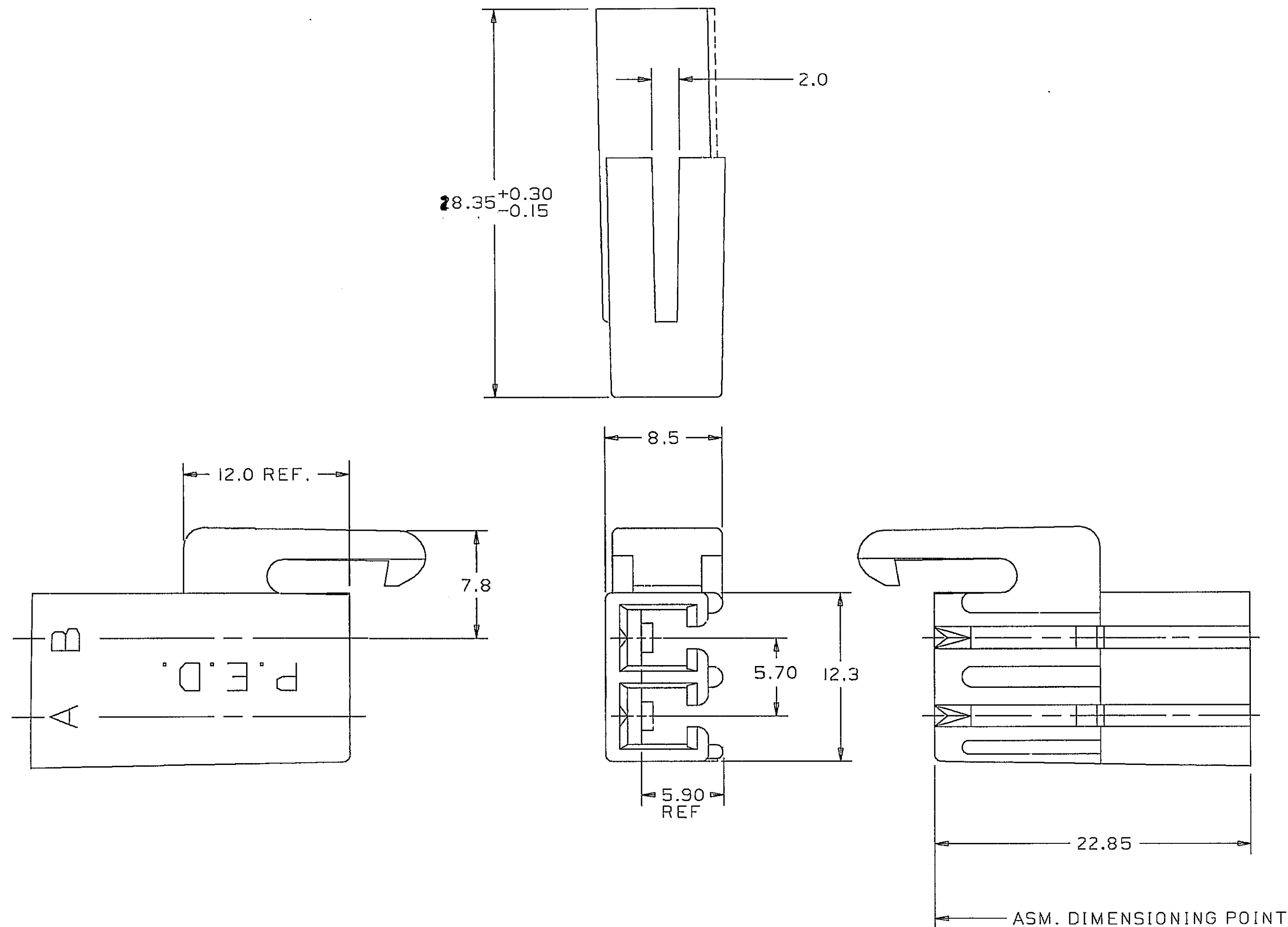


THIS DRAWING AND DESIGN HEREON CON-  
STITUTES A PROPRIETARY DESIGN OF  
PACKARD ELECTRIC DIVISION AND IS NOT  
TO BE DUPLICATED OR REPRODUCED WITH-  
OUT AUTHORITY OF PACKARD ELECTRIC  
DIVISION.

PACKARD ELECTRIC DIVISION  
GENERAL MOTORS CORPORATION  
WARREN, OHIO



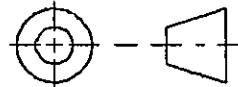
- NOTES — 1. CAVITIES TO ACCEPT TERMINAL 12010624  
OR EQUIVALENT.
2. MAXIMUM CABLE DIA. FOR CAVITIES — 3.12 MM.
3. MATING CONNECTOR DRC 198746 MODULE.
4. INSULATION CRIMP DIMENSIONS NOT TO EXCEED  
2.8 HIGH X 3.7 WIDE.

[illegible]

DRAWING NO.  
1209 2001

As of 06JL90 this drawing is no longer being maintained on computer vision.

**C03D1567**

<h1>METRIC</h1> <p>DIMENSIONS ARE IN MILLIMETERS UNLESS OTHERWISE SPECIFIED</p>		<p>THIRD ANGLE PROJECTION</p> 	
<p>CODE NO. 6900</p>		<p>TOLERANCE UNLESS OTHERWISE SPECIFIED</p>	
<p>QC</p>		<p>DECIMAL : ANGULAR ± 2°</p>	
<p>DWG. DATE 040C88</p>		<p>DR. <i>A. Pizano</i> 040C88</p>	
<p>CD.C.MP.F.2.I2092001.00</p>		<p>CK. <i>B. Roberto</i> DATE 130C88</p>	
<p>REFERENCE NO. 12047858 'D' SIZE</p>		<p>APPR. <i>R. MAGA</i> DATE 180C88</p>	
<p>MATERIAL SPEC.</p>		<p>APPR.</p>	
<p>RO100185 PBT IM - NAT</p>			
<p>NAME</p>			
<p>CONN 2F M/P 280 P25</p>			
<p>PART NO.</p>		<p>SIZE</p>	
<p>1209 2001</p>		<p>C</p>	
<p>OUTLINE DRAWING</p>			

# Mouser Electronics

Authorized Distributor

Click to View Pricing, Inventory, Delivery & Lifecycle Information:

[Aptiv:](#)  
[12092001](#)