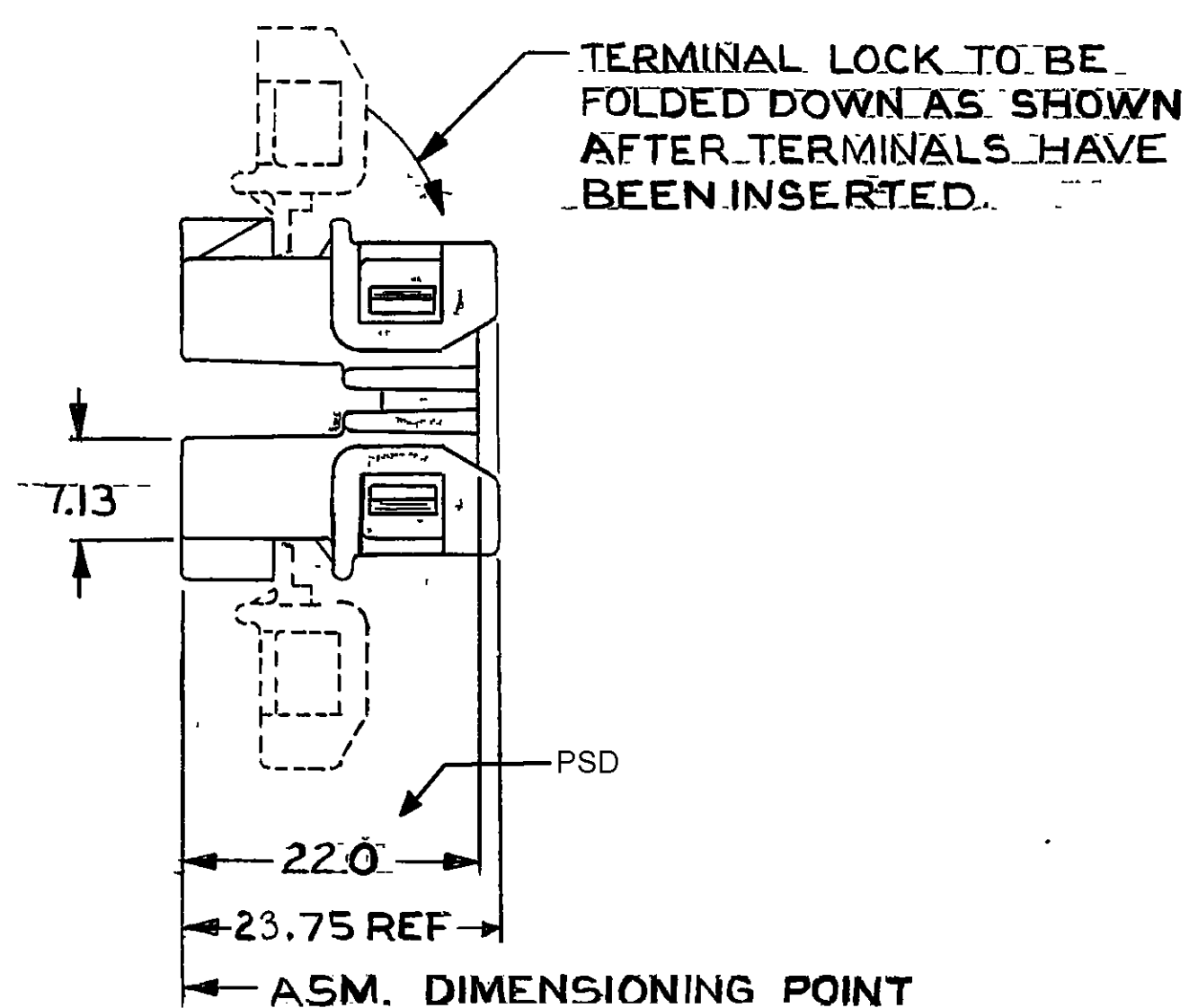
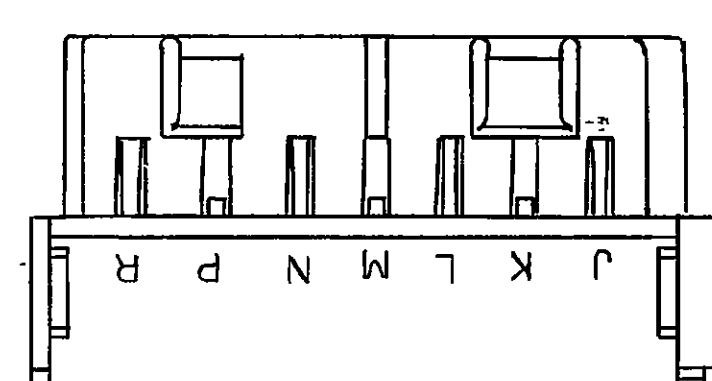
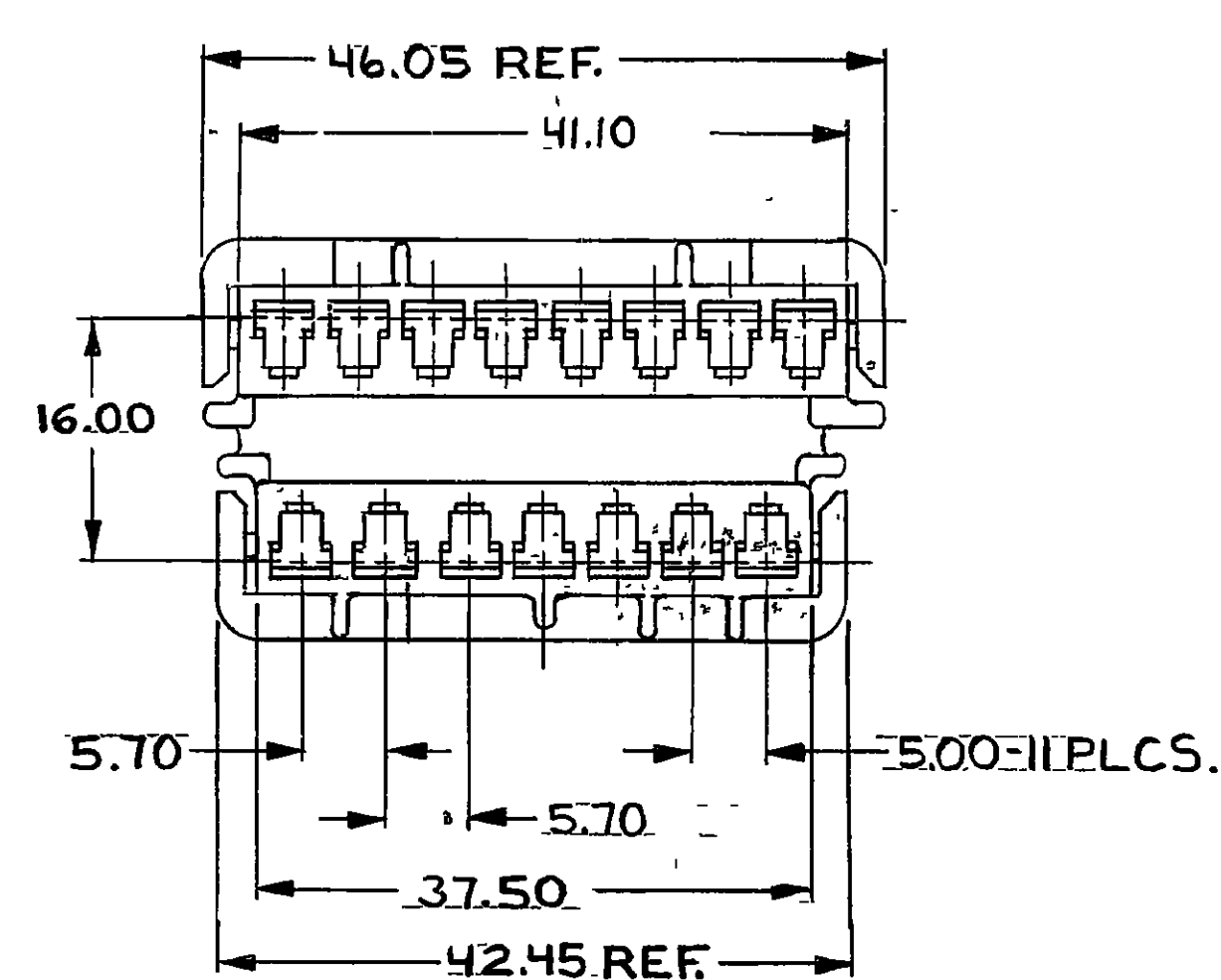
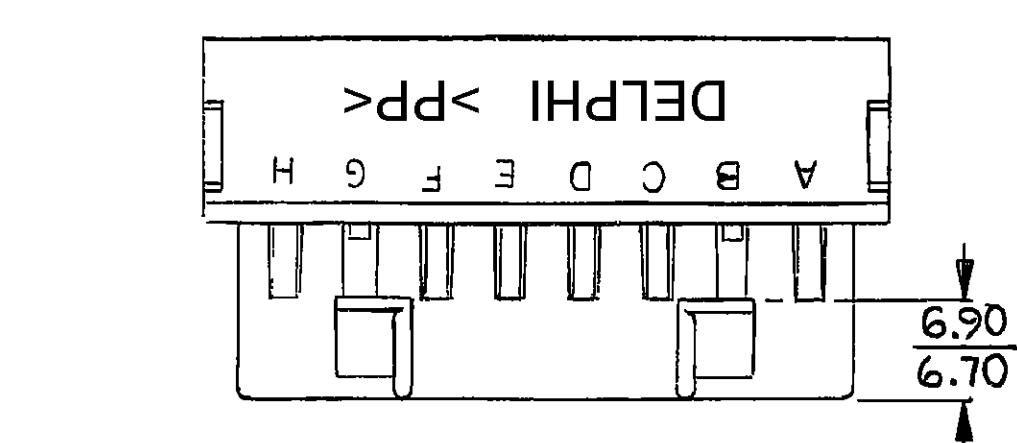


DO NOT SCALE

PACKARD ELECTRIC DIVISION
GENERAL MOTORS CORPORATION
WARREN, OHIO



NOTES-1. ALL CAVITIES TO ACCEPT 12015824 TERMINAL OR EQUIVALENT (MAX. SINGLE CABLE 2.0MM²).

2. MATING CONNECTORS ARE 120I592I + 120I592Z OR EQUIVALENT.
3. (2,3) X (0,1) RAISED DELPHI CORPORATE BRAND TO BE LOCATED ON ANY EXTERIOR SURFACE VISIBLE AT FINAL ASSEMBLY. OPTIONAL CONSTRUCTION TO BE "PED" OR NO LOGO.
4. MATERIAL RECYCLING CODE =>PC PER SAE J1344. (2,3) X (0,1) CHARACTERS TO BE LOCATED ON ANY EXTERIOR SURFACE. OPTIONAL CONSTRUCTION TO BE NO MATERIAL RECYCLING CODE.

METRIC

**DIMENSIONS ARE IN MILLIMETRES
UNLESS OTHERWISE SPECIFIED**

O.D. (SIZE C)

P.C. CODE		C10D1457	
CODE NO. 6900		TOLERANCE UNLESS OTHERWISE SPECIFIED	
QIC-C-4450		DECIMALS: 3 DIM. PLACES: 5 TWO PLACES: 0.01	
QWC DATE: 05JAB87		ANGULAR: 2°	
NCALE NONE		DR.	
SPT. NO.		CK R. HERMOSILLO	DATE 23SEP80
REFERENCE NO.		APTR R. HERMOSILLO	DATE 23SEP80
		APWD E. TRACEY	DATE 24SEP80
MATERIAL SPEC:		SEE CHART	
NAME CONNECTOR BODY-280 METRI-PACK SERIES 15 FEMALE TERMINALS			

MATERIAL SPEC. SEE CHAR

NAME CONNECTOR BODY-280 METRI-PACK SERIES
15 FEMALE TERMINALS

PART NO.

11204582

1201 502

BACKARD ELECTRIC

12045784	M0661002 PP BLK	C3	
12020213	M0661001 PP NAT	C3	
PART NO.	STATUS	MATERIAL SPEC + COLOR	REV
			N/P

THIRD ANGLE PROJECTION

1204 582

1

Mouser Electronics

Authorized Distributor

Click to View Pricing, Inventory, Delivery & Lifecycle Information:

[Aptiv:](#)
[12020213](#)