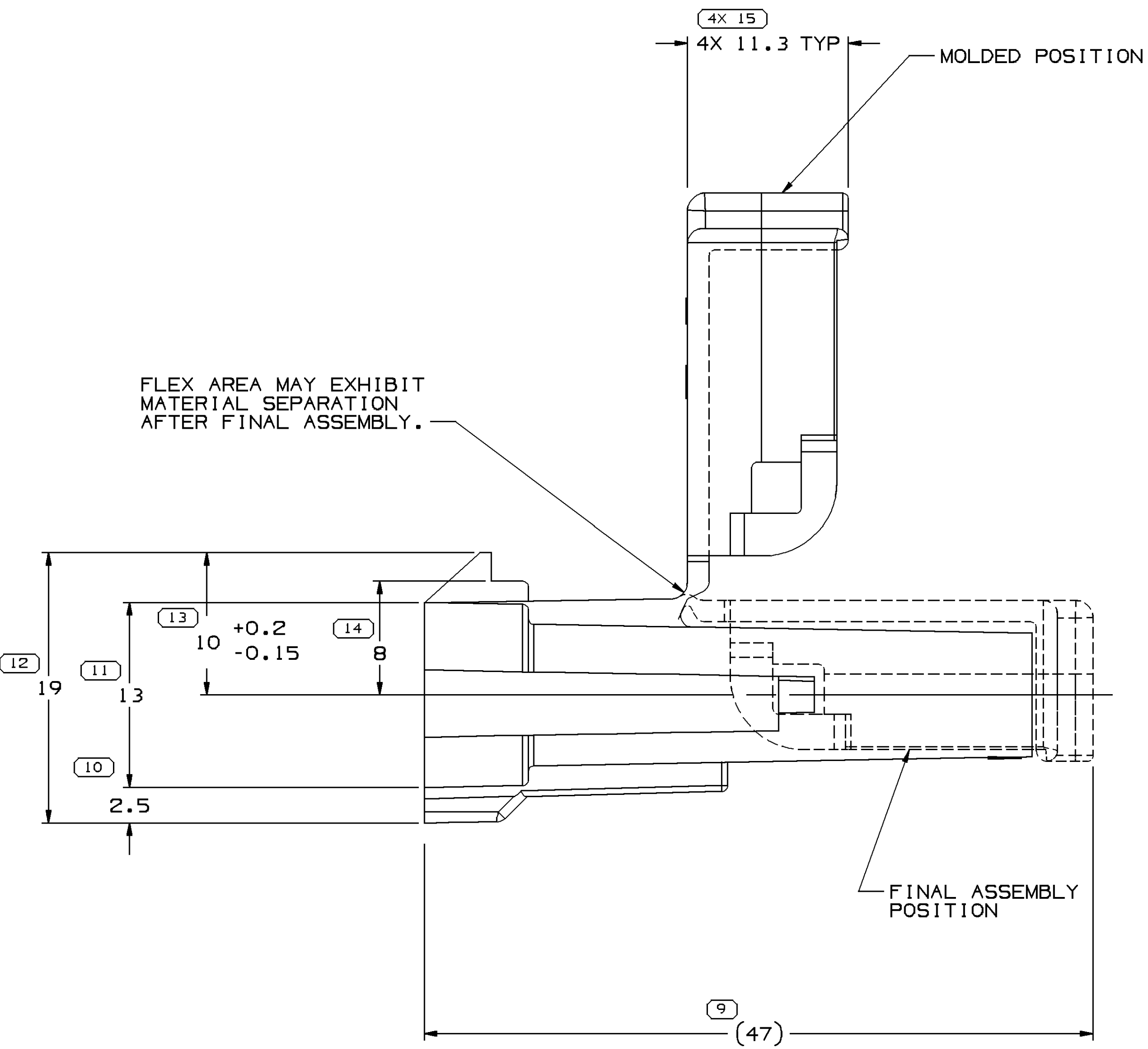
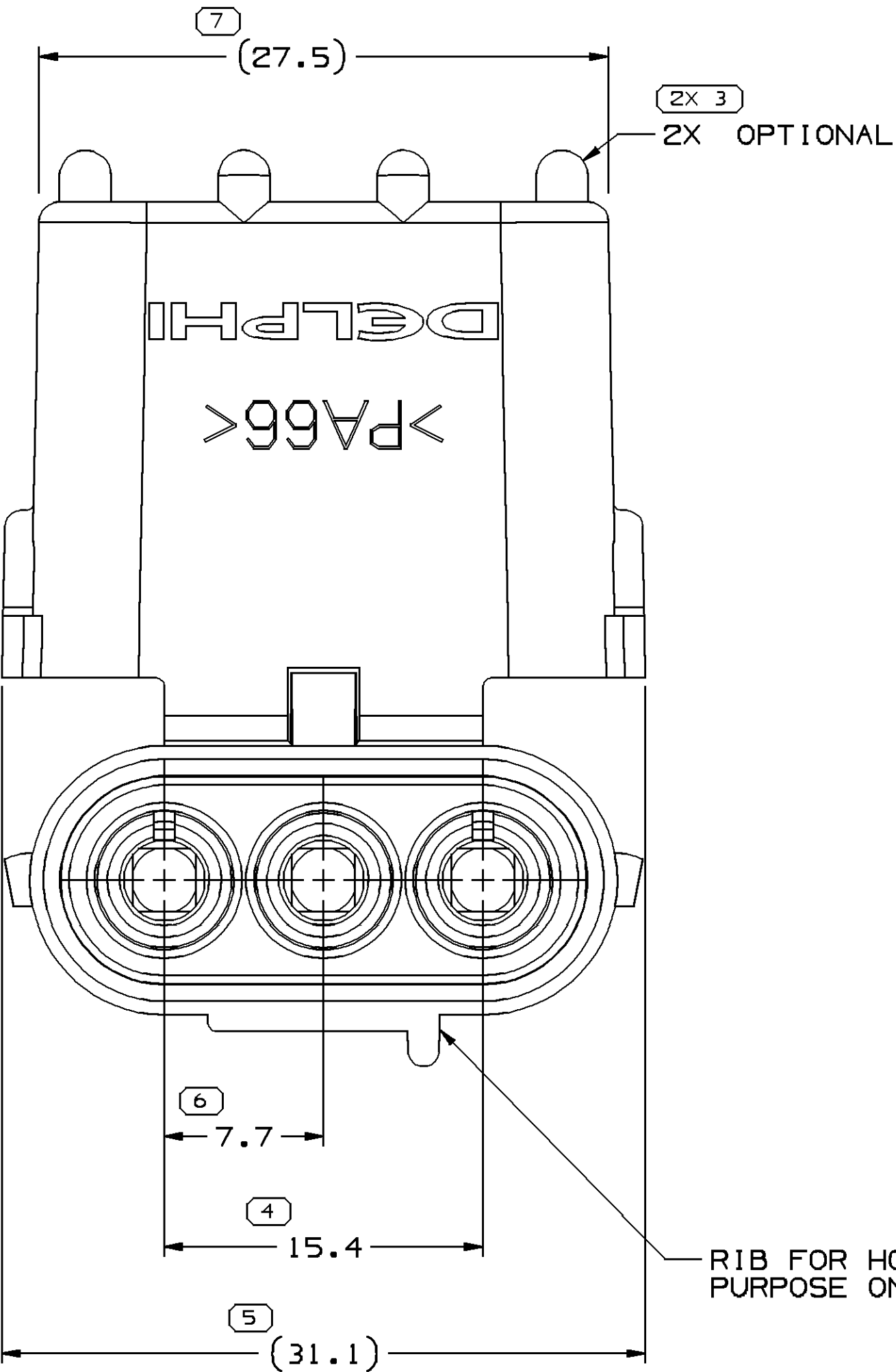
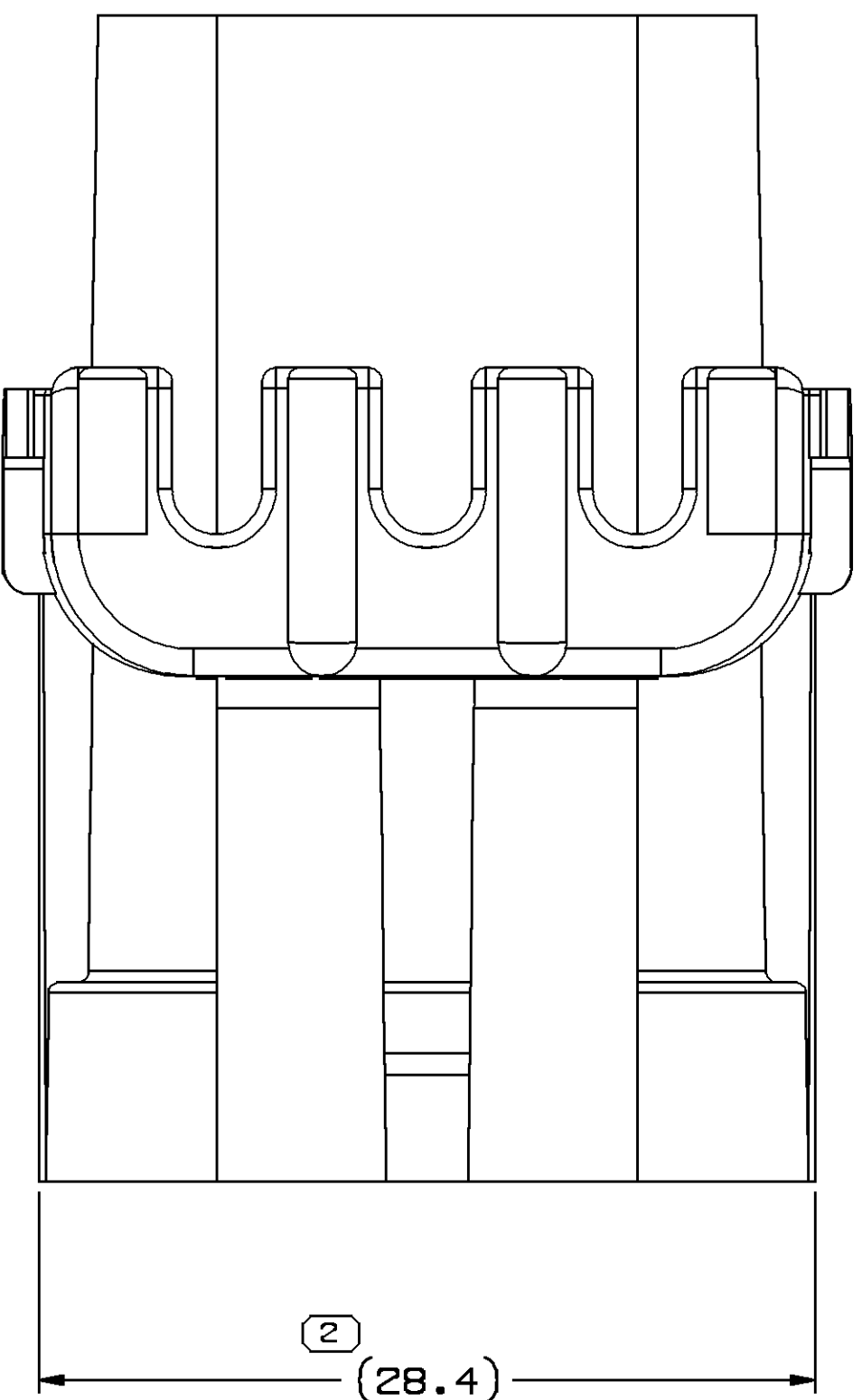
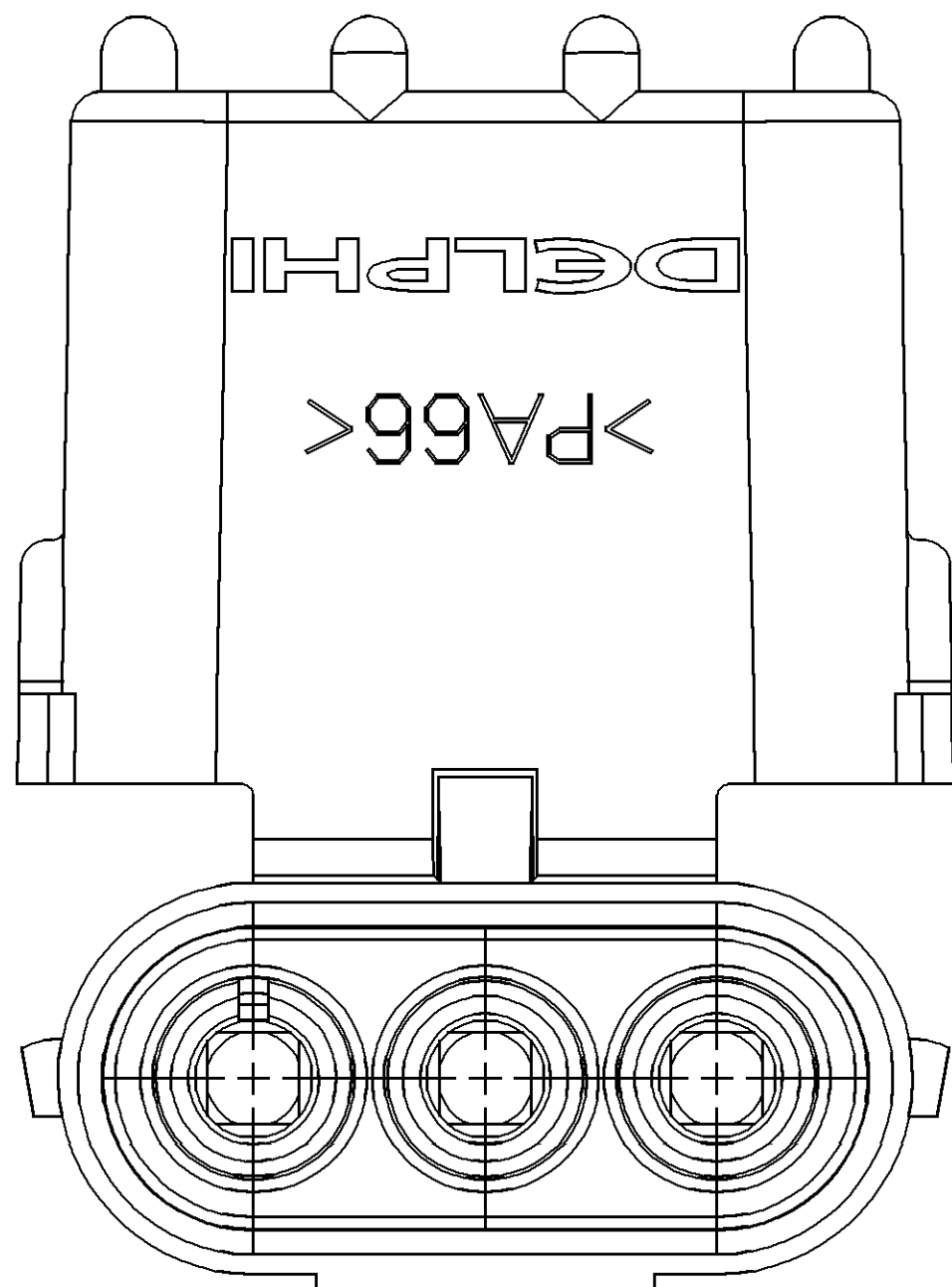


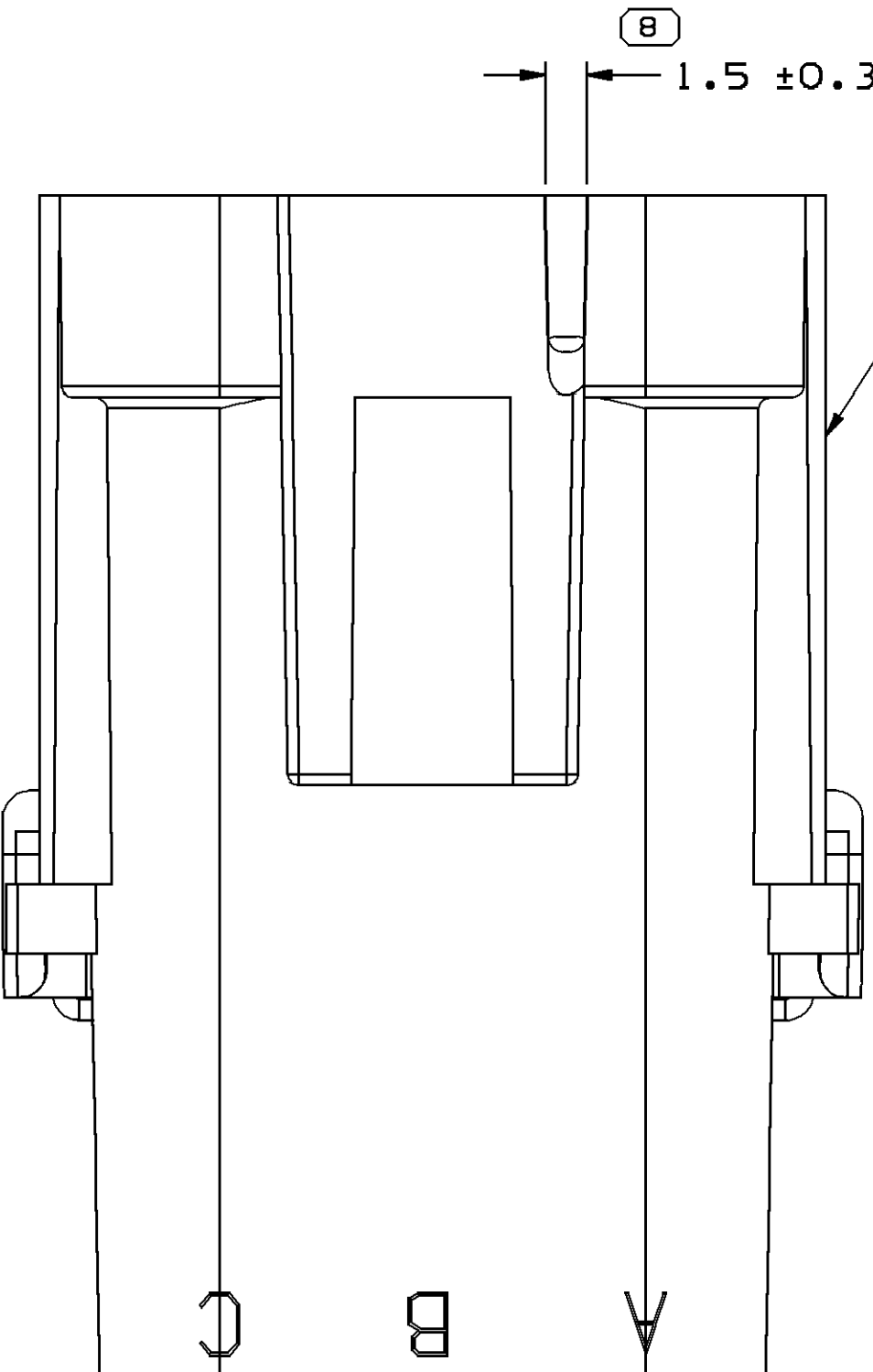
SYMBOL DEFINITION				MISSING SYMBOLS				DWS STATUS				ZONE	REVISION HISTORY				AUTH		DR		APVD					
								DATE	STG	REV	N/P		CHG													
A DIMENSION WITHOUT AN INSPECTION REPORT SYMBOL DOES NOT REQUIRE INSPECTION. IT MAY BE CONTROLLED ON THE INDIVIDUAL COMPONENT DRAWING.				TOTAL NO OF INSPECTIONS REQUIRED	20	NO MISSING SYMBOL NUMBER				06JUL02				R	02	-	-	CLEARED REV COLUMN: 12010717 - MAT'L SPEC WAS R0067547 PA6-BLK; 12015092 - MAT'L SPEC WAS R0064530 PA6-RED; 12015460 - MAT'L SPEC WAS R0065644 PA6-BLU				226196		JBR	EDV	RC
				LAST NO. USED		15					16JUL07				R	03	-	-	ADDED NOTE 8: UPDATED MATERIAL DESCRIPTION				401863		PJC	PJC



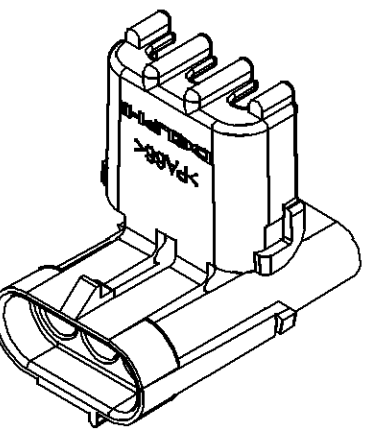
INDEX CODE  
-100-  
(ALSO SEE HAND BOOK)



INDEX CODE  
-101-  
(ALSO SEE HAND BOOK)



- NOTES
- UNLESS OTHERWISE SPECIFIED AND/OR INDICATED: DIMENSIONS ARE TO FACE OF VIEW SHOWN AND AUTOMATICALLY ROUNDED BY COMPUTER FOR INSPECTION (SEE MATH MODEL FOR PRECISE DIMENSIONS). FOR ALL OTHER DIMENSIONS NOT SHOWN BUT REQUIRED FOR TOOL BUILD, SEE MATH MODEL FOR PRECISE TOOL PATH DATA.
  - SEALING CODE 3 - DESIGN WILL PASS SALT FOG AND IMMERSION TEST AFTER CONDITIONING AS SPECIFIED IN ESA-644 (WEATHER-PACK), ESA-710 (METRI-PACK), ESA-650 (UNDERHOOD MICRO-PACK), C-4006 (WORLD CONNECTOR), ETC WHEN MATED TO MATING PART OR EQUIVALENT.
  - MATING COMPONENTS OR EQUIVALENT: CONNECTOR 12015793
  - THIS PART ACCEPTS THE FOLLOWING COMPONENTS OR EQUIVALENT: TERMINAL 12089040, CABLE SEAL 12015323
  - CAUTION: DO NOT ATTEMPT TO COPY THIS DRAWING WHEN DESIGNING A MATING PART TO A WEATHER PACK CONNECTOR. PLEASE REQUEST THE LATEST COPY OF DRAWING NUMBER 12020084 FROM THE PACKARD ELECTRIC DIVISION
  - MATERIAL RECYCLING CODE >PA66< PER SAE J1344. (2.3)X(0.1) RAISED CHARACTERS AS SHOWN TO BE LOCATED ON ANY EXTERIOR SURFACE. OPTIONAL CONSTRUCTION TO BE NO MATERIAL RECYCLING CODE.
  - (2.3)X(0.1) RAISED DELPHI CORPORATE BRAND TO BE LOCATED ON ANY EXTERIOR SURFACE, PREFERABLY VISIBLE AT FINAL ASSEMBLY. OPTIONAL CONSTRUCTION TO BE "PED" OR NO LOGO.
  - TO VERIFY CONNECTOR PHYSICAL ATTRIBUTES OR APPEARANCE ITEMS, REFER TO VPS-226.



PART NO	REV	N/P	STATUS	MATERIAL SPECIFICATION AND COLOR	TYPE	VOLUME CM³
12015460	07	AA		POLYAMIDE COMPOUND - BLU	101	7.923
12015092	07	AA		POLYAMIDE COMPOUND - RED	102	7.894
12010717	07	AA		POLYAMIDE COMPOUND - BLK	101	7.923

DIMENSIONAL RANGE (MM)		TOLERANCE UNLESS OTHERWISE SPECIFIED	
FROM	TO	±0.15	±0.2
>0	>20	±0.3	±0.4
>20	>30	±0.5	±0.6
>30	>70	±0.6	±0.8
>70	>100	±1	±1.2
>100	>150	±1	±1.2
>150	>200	±1	±1.2
>200	>250	±1	±1.2
>250	>300	±1	±1.2
>300	>400	±1	±1.2

PART DRAWING	
STYLE	SEE CHART
VOLUME (CM³)	SEE CHART
DISTR CODE	D
UNLESS OTHERWISE SPECIFIED	
THIS DOCUMENT IS IN ACCORDANCE WITH ASME Y14.5M-1994 AS SHOWN BY THE DIMENSIONAL TOLERANCES AND RELATED DATUMS APPLY HERE. RULE #1 (PERFECT FORM AT MAXIMUM MATERIAL CONDITION) SHALL BE THE BASIS FOR ALL DIMENSIONS UNLESS OTHERWISE SPECIFIED. SEPARATE POSITION CALLOUTS MAY BE SHOWN SEPARATELY, REGARDLESS OF DATUM REFERENCE.	
ALL DIMENSIONS ARE IN MILLIMETERS	
THIRD ANGLE PROJECTION	
DO NOT SCALE	
USE MATH DATA	

DELPHI	
DELPHI PACKARD ELECTRICAL/ELECTRONIC ARCHITECTURE	
WYOMING, OH	
DR	DATE
APVD1 J.M. SOVA	16JUL79
APVD2 T. MUDREY	17JUL79
APVD3 J. YURTIN	19JUL79
APVD4	
APVD5	
SUBSTANCES OF CONCERN AND RECYCLED CONTENT PER DELPHI 10949001	
SEE CHART	
DRAWING NAME	
TAXI CONN M W/P SHD SLD	
DRAWING NUMBER	
12015482	
SIZE A0	SCALE 4:1
FRAME NO 1	SHEET NO 1 OF 1
STG REV N/P	R 03 -

# Mouser Electronics

Authorized Distributor

Click to View Pricing, Inventory, Delivery & Lifecycle Information:

[Aptiv:](#)

[12015092](#)