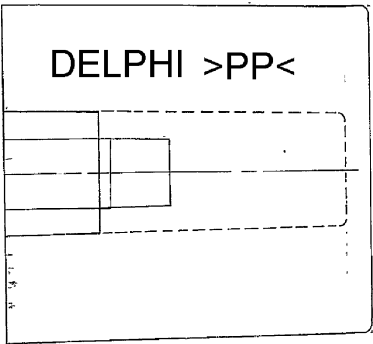
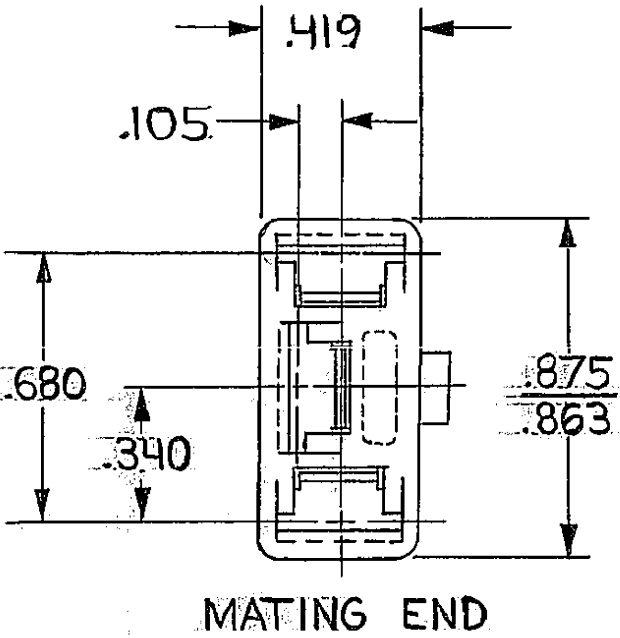
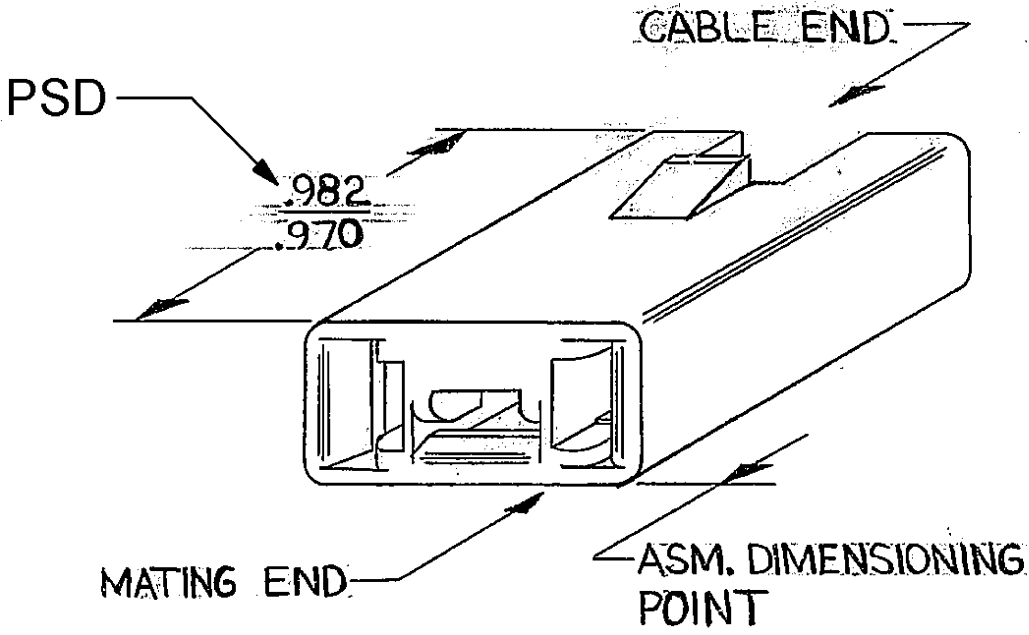


DWG STATUS					ZONE		REVISION HISTORY				AUTH		DR		APVD	
DATE	STG	REV	N/P	CHK												
17SE02	R	01	-	-									230338	RAO	EGR	ET
TAXI CREATED FROM SEPARATE DRAWINGS; ALL ACTIVE PARTS - ADDED NOTES (2 PLCS) AND REVISED MATL SPEC																



NOTES

- DIMENSIONS ARE TO FACE OF VIEW SHOWN UNLESS OTHERWISE INDICATED
- (.090) X (.004) RAISED DELPHI CORPORATE BRAND TO BE LOCATED ON ANY EXTERIOR SURFACE, PREFERABLY VISIBLE AT FINAL ASSEMBLY. OPTIONAL CONSTRUCTION TO BE "PED" OR NO LOGO
- MATERIAL RECYCLING CODE >PP< PER SAE J1344. (.090) X (.004) RAISED CHARACTERS AS SHOWN TO BE LOCATED ON ANY EXTERIOR SURFACE. OPTIONAL CONSTRUCTION TO BE NO MATERIAL RECYCLING CODE.

12040949	B1	-		M0661007 - PP GRN
08911907	-	-	OBSELETE	R-67551-POLYP-RED
02984958	B1	-		M0661002 - PP BLK
PART NO	REV	N/P	STATUS	MATERIAL SPECIFICATION AND COLOR

TOLERANCE UNLESS OTHERWISE SPECIFIED
DIMEN. IN INCH
FRACTIONS 1/16

DWG TYPE		PART DRAWING	
STYLE			
VOLUME (CM) ³	DISTN CODE		
ROUTING	6900	D	
UNLESS OTHERWISE SPECIFIED THIS DRAWING IS TO BE USED AS A GUIDE ONLY. IT IS NOT TO BE USED FOR THE DESIGN OF A NEW PART OR FOR THE DESIGN OF A NEW ASSEMBLY. IT IS NOT TO BE USED FOR THE DESIGN OF A NEW PART OR FOR THE DESIGN OF A NEW ASSEMBLY. IT IS NOT TO BE USED FOR THE DESIGN OF A NEW PART OR FOR THE DESIGN OF A NEW ASSEMBLY.			
THIRD ANGLE PROJECTION			

DELPHI DELPHI PACKARD ELECTRIC SYSTEMS WARREN, OH			
THIS DRAWING IS THE PROPERTY OF DELPHI CORPORATION. NO PARTS ARE TO BE USED IN THIS DRAWING FOR ANY PURPOSE OTHER THAN THE PURPOSE OF THE DRAWING AND SUPPLY TO DELPHI CORPORATION.			
DATE	06FE73	DR	D. B. O' MALLEY
DATE	07FE73	APVD	T. MUDREY
DATE	08FE73	APVD	T. LUBERT
SUBSTANCES OF CONCERN AND RECYCLED CONTENT PER DELPHI A-10000001			
MATERIAL			
SEE CHART			
DRAWING NAME			
TAXI CONN 56			
DRAWING NUMBER			
08911908			
SIZE	A0	SCALE	NONE
FRAME NO	1 OF 1	SHEET NO	1 OF 1
REV	R	01	-

Mouser Electronics

Authorized Distributor

Click to View Pricing, Inventory, Delivery & Lifecycle Information:

[Aptiv:](#)
[02984958](#)