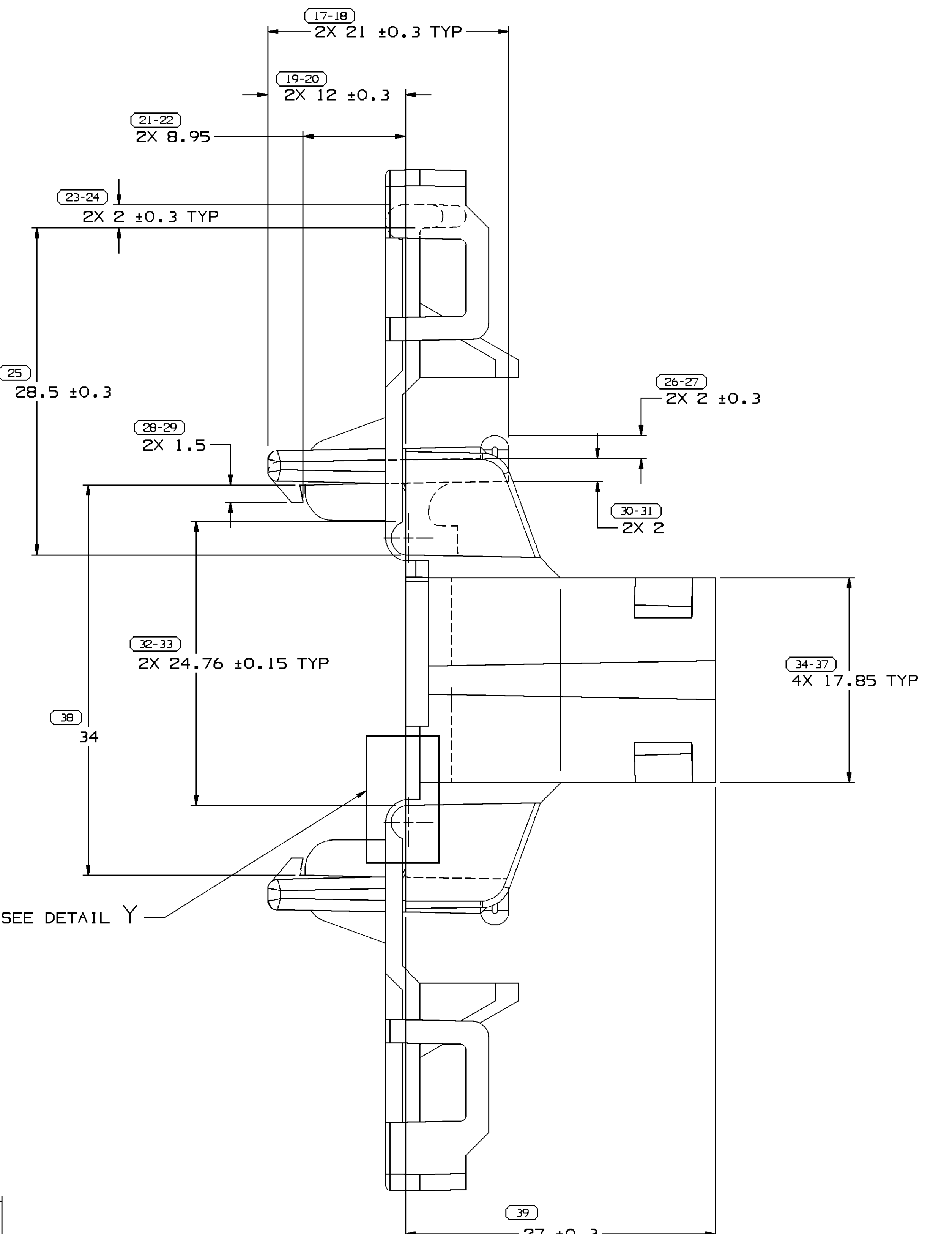
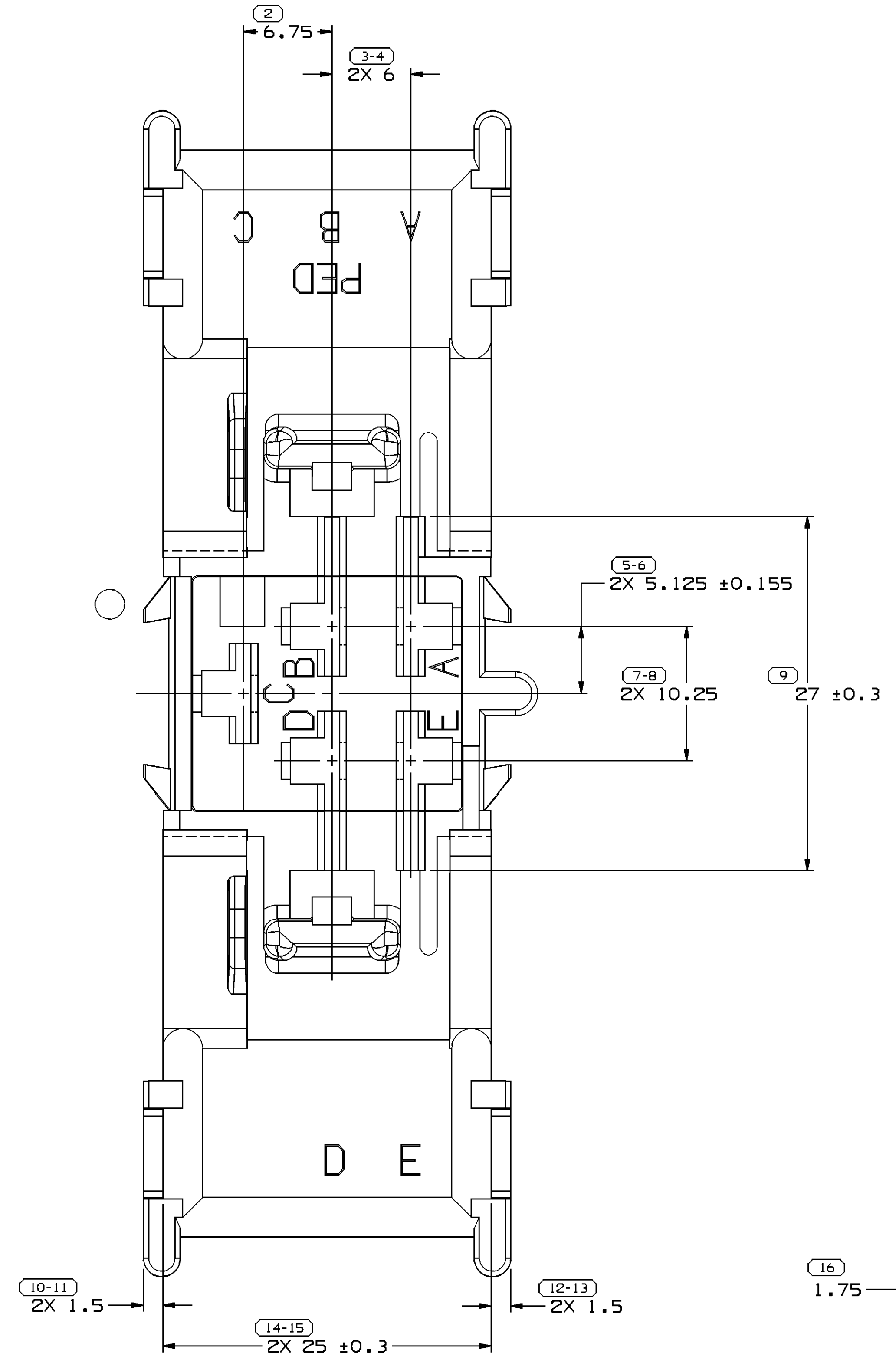
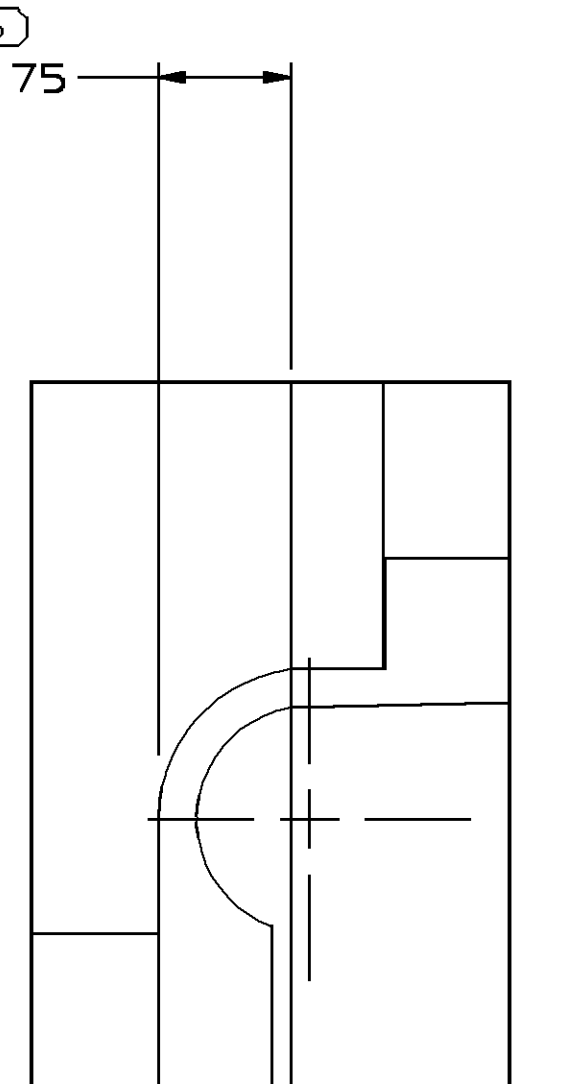


TERMINAL LOCKS TO BE
FOLDED DOWN AS SHOWN
AFTER TERMINALS HAVE
BEEN INSERTED

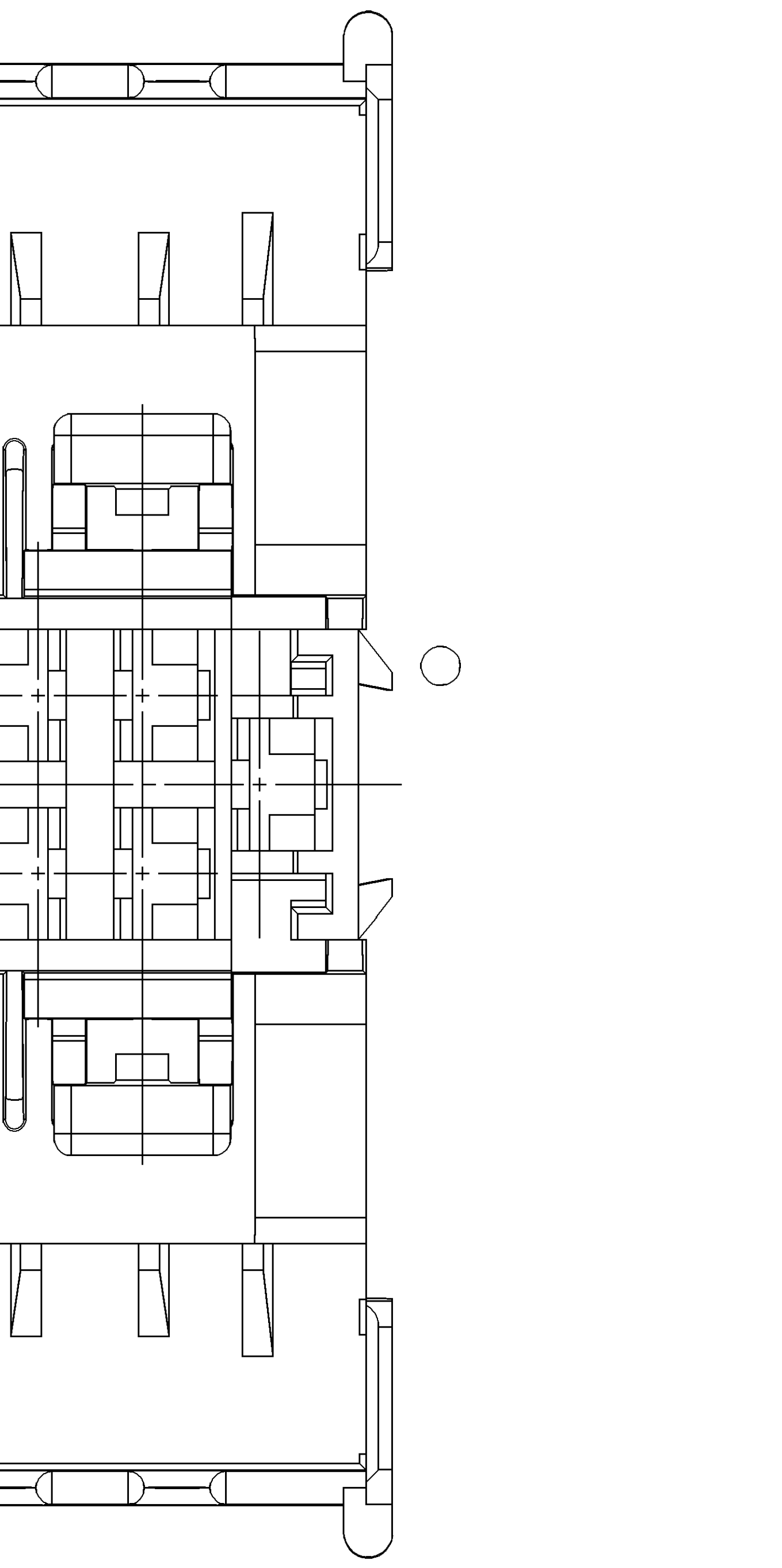
SECONDARY TERMINAL LOCK
ASSEMBLY REQUIREMENT



SEE DETAIL Y



DETAIL Y
SCALE 8:1



- NOTES
1. UNLESS OTHERWISE SPECIFIED AND/OR INDICATED:
DIMENSIONS ARE TO FACE OF VIEW SHOWN AND
AUTOMATICALLY ROUNDED BY COMPUTER FOR INSPECTION.
(SEE MATH MODEL FOR PRECISE DIMENSIONS.) FOR ALL
OTHER DIMENSIONS NOT SHOWN BUT REQUIRED FOR TOOL
BUILD, SEE MATH MODEL FOR PRECISE TOOL PATH DATA.
 2. REFERENCE MATING COMPONENTS OR EQUIVALENT:
CONNECTOR MATES WITH DELCO ELECTRONICS SWITCH 16015450
 3. THIS PART ACCEPTS THE FOLLOWING COMPONENTS OR EQUIVALENT:
CAVITIES TO ACCEPT 12015832 TERMINAL
 4. MATERIAL RECYCLING CODE PER 150.11469. (2,3) X (0.1) CHARACTERS
AS SHOWN TO BE LOCATED ON ANY EXTERIOR SURFACE.
OPTIONAL CONSTRUCTION TO BE NO MATERIAL RECYCLING CODE.
 5. 2.3 MIN X 0.1 DELPHI CORPORATE BRAND TO BE LOCATED ON ANY
EXTERIOR SURFACE, PREFERABLY VISIBLE AT FINAL ASSEMBLY.
OPTIONAL CONSTRUCTION FOR EXISTING TOOLING MAY BE "PED".

DRAWING NUMBER									
12041334									
SIZE	SCALE	FRAME NO	SHEET NO	SHEET NO	REV	N/P	REV	N/P	REV
A1x3	4:1	2	OF 2	1	OF 2	R	03	-	-

12193532	04	AA	101	M3592025 PA66 HS IM GRA MD	A,B,C,D,E	10.712
12020813	07	AA	101	M3592001 PA66 HS IM BLK	A,B,C,D,E	10.712
PART NO	REV	N/P	STATUS	TYPE	MATERIAL SPECIFICATION AND COLOR	CAVITIES USED
						VOLUME CM ³

SYMBOL DEFINITION				MISSING NUMBERS				REVISION HISTORY			
THE NUMBER INSIDE THE SYMBOL CORRESPONDS TO THE NUMBER ON THE INSPECTION REPORT FOR THIS DRAWING/PART NUMBER				TOTAL NO. OF SYMBOLS ON DRAWING				AUTH			
				22				193553 EOV/RCH JH			
				39				199692 RCH/RCH JH			

DATE	STG	REV	N/P	CHG	ZONE	ALL PARTS - REDRAWN TO PD	12020813 - MAT'L SPEC WAS R0067547	199692 RCH/RCH JH
24FE00	R	01					PA6-BLK 11219353- MAT'L SPEC WAS R0064366 PA6-GRA MD	
24FE00	R	02						
03MY06	R	03	-	-	-	ALL PARTS - CORRECTED MODEL AND UPDATED		280181 RTV/JAM B05

DATE	STG	REV	N/P	CHG	ZONE	ALL PARTS - REDRAWN TO PD	12020813 - MAT'L SPEC WAS R0067547	199692 RCH/RCH JH
24FE00	R	01					PA6-BLK 11219353- MAT'L SPEC WAS R0064366 PA6-GRA MD	
24FE00	R	02						
03MY06	R	03	-	-	-	ALL PARTS - CORRECTED MODEL AND UPDATED		280181 RTV/JAM B05

DATE	STG	REV	N/P	CHG	ZONE	ALL PARTS - REDRAWN TO PD	12020813 - MAT'L SPEC WAS R0067547	199692 RCH/RCH JH
24FE00	R	01					PA6-BLK 11219353- MAT'L SPEC WAS R0064366 PA6-GRA MD	
24FE00	R	02						
03MY06	R	03	-	-	-	ALL PARTS - CORRECTED MODEL AND UPDATED		280181 RTV/JAM B05

DATE	STG	REV	N/P	CHG	ZONE	ALL PARTS - REDRAWN TO PD	12020813 - MAT'L SPEC WAS R0067547	199692 RCH/RCH JH
24FE00	R	01					PA6-BLK 11219353- MAT'L SPEC WAS R0064366 PA6-GRA MD	
24FE00	R	02						
03MY06	R	03	-	-	-	ALL PARTS - CORRECTED MODEL AND UPDATED		280181 RTV/JAM B05

DATE	STG	REV	N/P	CHG	ZONE	ALL PARTS - REDRAWN TO PD	12020813 - MAT'L SPEC WAS R0067547	199692 RCH/RCH JH
24FE00	R	01					PA6-BLK 11219353- MAT'L SPEC WAS R0064366 PA6-GRA MD	
24FE00	R	02						
03MY06	R	03	-	-	-	ALL PARTS - CORRECTED MODEL AND UPDATED		280181 RTV/JAM B05

DATE	STG	REV	N/P	CHG	ZONE	ALL PARTS - REDRAWN TO PD	12020813 - MAT'L SPEC WAS R0067547	199692 RCH/RCH JH
24FE00	R	01					PA6-BLK 11219353- MAT'L SPEC WAS R0064366 PA6-GRA MD	
24FE00	R	02						
03MY06	R	03	-	-	-	ALL PARTS - CORRECTED MODEL AND UPDATED		280181 RTV/JAM B05

DATE	STG	REV	N/P	CHG	ZONE	ALL PARTS - REDRAWN TO PD	12020813 - MAT'L SPEC WAS R0067547	199692 RCH/RCH JH
24FE00	R	01					PA6-BLK 11219353- MAT'L SPEC WAS R0064366 PA6-GRA MD	
24FE00	R	02						
03MY06	R	03	-	-	-	ALL PARTS - CORRECTED MODEL AND UPDATED		280181 RTV/JAM B05

DATE	STG	REV	N/P	CHG	ZONE	ALL PARTS - REDRAWN TO PD	12020813 - MAT'L SPEC WAS R0067547	199692 RCH/RCH JH
24FE00	R	01					PA6-BLK 11219353- MAT'L SPEC WAS R0064366 PA6-GRA MD	
24FE00	R	02						
03MY06	R	03	-	-	-	ALL PARTS - CORRECTED MODEL AND UPDATED		280181 RTV/JAM B05

DATE	STG	REV	N/P	CHG	ZONE	ALL PARTS - REDRAWN TO PD	12020813 - MAT'L SPEC WAS R0067547	199692 RCH/RCH JH
24FE00	R	01					PA6-BLK 11219353- MAT'L SPEC WAS R0064366 PA6-GRA MD	
24FE00	R	02						
03MY06	R	03	-	-	-	ALL PARTS - CORRECTED MODEL AND UPDATED		280181 RTV/JAM B05

DATE	STG	REV	N/P	CHG	ZONE	ALL PARTS - REDRAWN TO PD	12020813 - MAT'L SPEC WAS R0067547	199692 RCH/RCH JH
24FE00	R	01					PA6-BLK 11219353- MAT'L SPEC WAS R0064366 PA6-GRA MD	
24FE00	R	02						
03MY06	R	03	-	-	-	ALL PARTS - CORRECTED MODEL AND UPDATED		280181 RTV/JAM B05

DATE	STG	REV	N/P	CHG	ZONE	ALL PARTS - REDRAWN TO PD	12020813 - MAT'L SPEC WAS R0067547	199692 RCH/RCH JH
24FE00	R	01					PA6-BLK 11219353- MAT'L SPEC WAS R0064366 PA6-GRA MD	
24FE00	R	02						
03MY06	R	03	-	-	-	ALL PARTS - CORRECTED MODEL AND UPDATED		280181 RTV/JAM B05

DATE	STG	REV	N/P	CHG	ZONE	ALL PARTS - REDRAWN TO PD	12020813 - MAT'L SPEC WAS R0067547	199692 RCH/RCH JH
24FE00	R	01					PA6-BLK 11219353- MAT'L SPEC WAS R0064366 PA6-GRA MD	
24FE00	R	02						
03MY06	R	03	-	-	-	ALL PARTS - CORRECTED MODEL AND UPDATED		280181 RTV/JAM B05

DATE	STG	REV	N/P	CHG	ZONE	ALL PARTS - REDRAWN TO PD	12020813 - MAT'L SPEC WAS R0067547	199692 RCH/RCH JH
24FE00	R	01					PA6-BLK 11219353- MAT'L SPEC WAS R0064366 PA6-GRA MD	
24FE00	R	02						
03MY06	R	03	-	-	-	ALL PARTS - CORRECTED MODEL AND UPDATED		280181 RTV/JAM B05

DATE	STG	REV	N/P	CHG	ZONE	ALL PARTS - REDRAWN TO PD	12020813 - MAT'L SPEC WAS R0067547	199692 RCH/RCH JH
24FE00	R	01					PA6-BLK 11219353- MAT'L SPEC WAS R0064366 PA6-GRA MD	
24FE00	R	02						
03MY06	R	03	-	-	-	ALL PARTS - CORRECTED MODEL AND UPDATED		280181 RTV/JAM B05

DATE	STG	REV	N/P	CHG	ZONE	ALL PARTS - REDRAWN TO PD	12020813 - MAT'L SPEC WAS R0067547	199692 RCH/RCH JH
24FE00	R	01					PA6-BLK 11219353- MAT'L SPEC WAS R0064366 PA6-GRA MD	
24FE00	R	02						
03MY06	R	03	-	-	-	ALL PARTS - CORRECTED MODEL AND UPDATED		280181 RTV/JAM B05

DATE	STG	REV	N/P	CHG	ZONE	ALL PARTS - REDRAWN TO PD	12020813 - MAT'L SPEC WAS R0067547	199692 RCH/RCH JH
24FE00	R	01					PA6-BLK 11219353- MAT'L SPEC WAS R0064366 PA6-GRA MD	
24FE00	R	02						
03MY06	R	03	-	-	-	ALL PARTS - CORRECTED MODEL AND UPDATED		280181 RTV/JAM B05

DATE	STG	REV	N/P	CHG	ZONE	ALL PARTS - REDRAWN TO PD	12020813 - MAT'L SPEC WAS R0067547	199692 RCH/RCH JH
24FE00	R	01					PA6-BLK 11219353- MAT'L SPEC WAS R0064366 PA6-GRA MD	
24FE00	R	02						
03MY06	R	03	-	-	-	ALL PARTS - CORRECTED MODEL AND UPDATED		280181 RTV/JAM B05

DATE	STG	REV	N/P	CHG	ZONE	ALL PARTS - REDRAWN TO PD	12020813 - MAT'L SPEC WAS R0067547	199692 RCH/RCH JH
24FE00	R	01					PA6-BLK 11219353- MAT'L SPEC WAS R0064366 PA6-GRA MD	
24FE00	R	02						
03MY06	R	03	-	-	-	ALL PARTS - CORRECTED MODEL AND UPDATED		280181 RTV/JAM B05

DATE	STG	REV	N/P	CHG	ZONE	ALL PARTS - REDRAWN TO PD	12020813 - MAT'L SPEC WAS R0067547	199692 RCH/RCH JH
24FE00	R	01					PA6-BLK 11219353- MAT'L SPEC WAS R0064366 PA6-GRA MD	
24FE00	R	02						
03MY06	R	03	-	-	-	ALL PARTS - CORRECTED MODEL AND UPDATED		280181 RTV/JAM B05

DATE	STG	REV	N/P	CHG	ZONE	ALL PARTS - REDRAWN TO PD	12020813 - MAT'L SPEC WAS R0067547	199692 RCH/RCH JH
24FE00	R	01					PA6-BLK 11219353- MAT'L SPEC WAS R0064366 PA6-GRA MD	
24FE00	R	02						
03MY06	R	03	-	-	-	ALL PARTS - CORRECTED MODEL AND UPDATED		280181 RTV/JAM B05

DATE	STG	REV	N/P	CHG	ZONE	ALL PARTS - REDRAWN TO PD	12020813 - MAT'L SPEC WAS R0067547	199692 RCH/RCH JH
24FE00	R	01					PA6-BLK 11219353- MAT'L SPEC WAS R0064366 PA6-GRA MD	
24FE00	R	02						
03MY06	R	03	-	-	-	ALL PARTS - CORRECTED MODEL AND UPDATED		280181 RTV/JAM B05

DATE	STG	REV	N/P	CHG	ZONE	ALL PARTS - REDRAWN TO PD	12020813 - MAT'L SPEC WAS R0067547	199692 RCH/RCH JH
24FE00	R	01					PA6-BLK 11219353- MAT'L SPEC WAS R0064366 PA6-GRA MD	
24FE00	R	02						
03MY06	R	03	-	-	-	ALL PARTS - CORRECTED MODEL AND UPDATED		280181 RTV/JAM B05

DATE	STG	REV	N/P	CHG	ZONE	ALL PARTS - REDRAWN TO PD	12020813 - MAT'L SPEC WAS R0067547	199692 RCH/RCH JH
24FE00	R	01					PA6-BLK 11219353- MAT'L SPEC WAS R0064366 PA6-GRA MD	
24FE00	R	02						
03MY06	R	03	-	-	-	ALL PARTS - CORRECTED MODEL AND UPDATED		280181 RTV/JAM B05

DATE	STG	REV	N/P	CHG	ZONE	ALL PARTS - REDRAWN TO PD	12020813 - MAT'L SPEC WAS R0067547	199692 RCH/RCH JH
24FE00	R	01					PA6-BLK 11219353- MAT'L SPEC WAS R0064366 PA6-GRA MD	
24FE00	R	02						
03MY06	R	03	-	-	-	ALL PARTS - CORRECTED MODEL AND UPDATED		280181 RTV/JAM B05

DATE	STG	REV	N/P	CHG	ZONE	ALL PARTS - REDRAWN TO PD	12020813 - MAT'L SPEC WAS R0067547	199692 RCH/RCH JH
24FE00	R	01					PA6-BLK 11219353- MAT'L SPEC WAS R0064366 PA6-GRA MD	
24FE00	R	02						
03MY06	R	03	-	-	-	ALL PARTS - CORRECTED MODEL AND UPDATED		280181 RTV/JAM B05

DATE	STG	REV	N/P	CHG	ZONE	ALL PARTS - REDRAWN TO PD	12020813 - MAT'L SPEC WAS R0067547	199692 RCH/RCH JH
24FE00	R	01					PA6-BLK 11219353- MAT'L SPEC WAS R0064366 PA6-GRA MD	
24FE00	R	02						
03MY06	R	03	-	-	-	ALL PARTS - CORRECTED MODEL AND UPDATED		280181 RTV/JAM B05

DATE	STG	REV	N/P	CHG	ZONE	ALL PARTS - REDRAWN TO PD	12020813 - MAT'L SPEC WAS R0067547	199692 RCH/RCH JH
24FE00	R	01					PA6-BLK 11219353- MAT'L SPEC WAS R0064366 PA6-GRA MD	
24FE00	R	02						
03MY06	R	03	-	-	-	ALL PARTS - CORRECTED MODEL AND UPDATED		280181 RTV/JAM B05

DATE	STG	REV	N/P	CHG	ZONE	ALL PARTS - REDRAWN TO PD	12020813 - MAT'L SPEC WAS R0067547	199692 RCH/RCH JH
24FE00	R	01					PA6-BLK 11219353- MAT'L SPEC WAS R0064366 PA6-GRA MD	
24FE00	R	02						
03MY06	R	03	-	-	-	ALL PARTS - CORRECTED MODEL AND UPDATED		280181 RTV/JAM B05

DATE	STG	REV	N/P	CHG	ZONE	ALL PARTS - REDRAWN TO PD	12020813 - MAT'L SPEC WAS R0067547	199692 RCH/RCH JH
24FE00	R	01					PA6-BLK 11219353- MAT'L SPEC WAS R0064366 PA6-GRA MD	
24FE00	R	02						
03MY06	R	03	-	-	-	ALL PARTS - CORRECTED MODEL AND UPDATED		280181 RTV/JAM B05

DIMENSIONS ENCLOSED IN () INDICATE REFERENCE DIMENSIONS AND NO TOLERANCE LIMITS ARE ESTABLISHED.										TAXI CONN F M/P 630									
AL RANGE (MM)										DRAWING NUMBER									
CHART E1										THIRD ANGLE PROJECTION									
DO NOT SCALE										12041334									

Mouser Electronics

Authorized Distributor

Click to View Pricing, Inventory, Delivery & Lifecycle Information:

[Aptiv:](#)

[12020813](#)