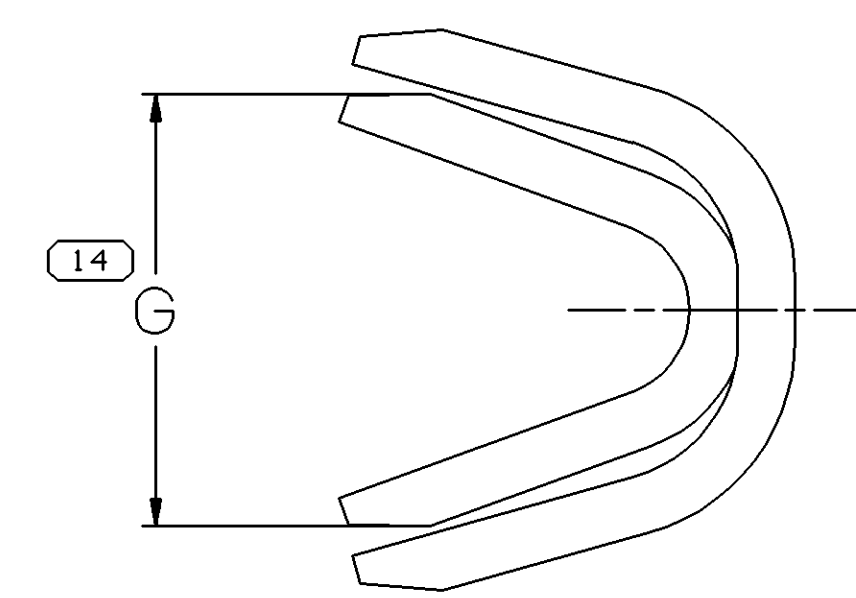
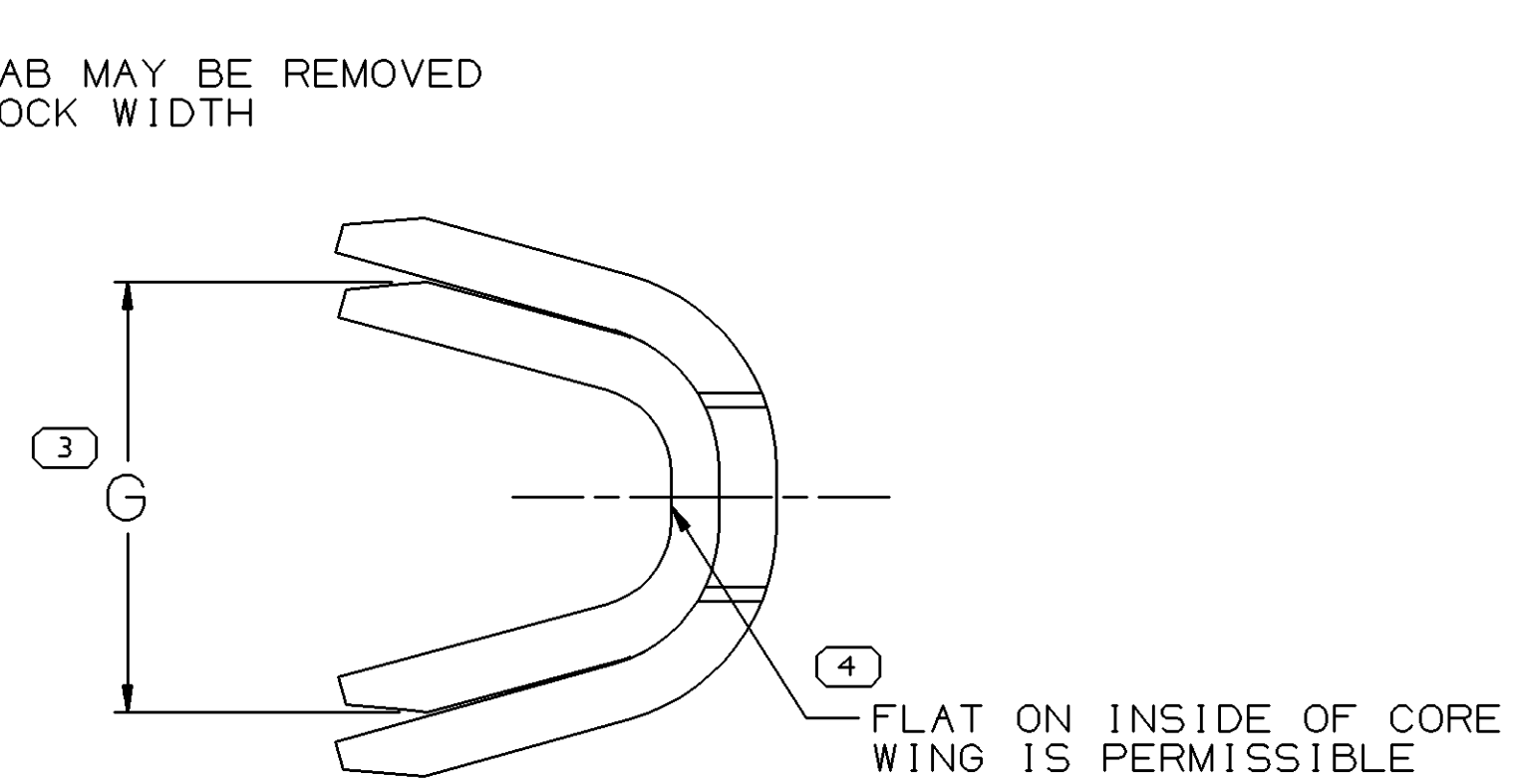


10201



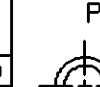

NOTES

1. UNLESS OTHERWISE SPECIFIED AND/OR INDICATED:

DIMENSIONS ARE TO FACE OF VIEW SHOWN AND  
AUTOMATICALLY ROUNDED BY COMPUTER FOR INSPECTION  
(SEE MATH MODEL FOR PRECISE DIMENSIONS). FOR ALL  
OTHER DIMENSIONS NOT SHOWN BUT REQUIRED FOR TOOL  
BUILD, SEE MATH MODEL FOR PRECISE TOOL PATH DATA

2. "▲" INDICATES OPTIONAL MATERIAL

3. "\*" TO ACCEPT STAR WASHER

DWG TITLE PART DRAWING	
STYLE  	
SCALE (ONLY)	DISTR CODE  <div style="border: 1px solid black; width: 100px; height: 100px; text-align: center; font-size: 40px; margin: 0 auto;">D</div>
UNLESS OTHERWISE SPECIFIED THIS DOCUMENT IS IN ACCORDANCE WITH ASTM 1248-1994 STANDARD SPECIFICATION FOR STEEL PLATE, 48" WIDE, 10' LONG, TOLERANCES ACCORDING TO - 1993, ALL DIMENSIONS TOLERANCES AND RELATED DATA ARE IN INCHES UNLESS OTHERWISE SPECIFIED BY THE DRAWING OR BY THE MATERIAL SPECIFICATION. TOLERANCES ON DIMENSIONS ARE IN PARENT PARENS. DIMENSIONS IN PARENT PARENS ARE NOT TO BE USED FOR FABRICATION OF PARTS. DIMENSIONS IN PARENT PARENS ARE IN INCHES ALL DIMENSIONS ARE IN INCHES	
<div style="border: 1px solid black; padding: 5px; display: inline-block;">         3 PROCESS SPECIFIC DIMENSIONS       </div>	REFERENCE
DIMENSIONS ENCLOSED IN ( ) INDICATE TOLERANCES ENCLOSED IN [ ] INDICATE DIMENSIONS ARE ESTABLISHED	THIRD ANGLE PROJECTION
DIMENSIONAL RANGE IN CHART 2 FROM 0 TO 5000 TOLERANCE UNLESS OTHERWISE SPECIFIED ±.005 ±.010 UNLESS TO FRANCE 2	DO NOT SCALE USE MAT DATA   

DRAWING NUMBER							
12020611							
SIZE	SCALE	FRAME NO	SHEET NO	STG	REV	N/P	
A1x3	5:1	2 OF 2	3 OF 3	R	09	-	

# Mouser Electronics

Authorized Distributor

Click to View Pricing, Inventory, Delivery & Lifecycle Information:

[Aptiv:](#)  
[08900947](#)