

Component-to-wire connectors **FCi**

Sicma

1 & 2 way sealed female housings for 2.8 mm terminals

Features

- 1 and 2 position housings available
- Reduced size sealed housings
- Waterproof application with single wire seal
- Corrugated tube locking device
- Plastic locking ring
- Mechanical polarization
- Several colours codings available



Performance characteristics

- Temperature range: from -40°C to +125°C
- Contact retention force: > 120 N
- Contact insertion force: < 15 N
- Connector mating force: < 50 N
- Sealing protection: IP 68

Construction

- Housing material: PBT

Tooling

- Female terminal removal tool: 210S045

Connector compatibility

- Usable terminals:
 - Sicma-2 2.8 mm female terminals
 - Sicma-2 2.8 mm male terminals
 - Sicma-3 2.8 mm female terminals
 - Sicma-3 2.8 mm male terminals

Part Numbers	No. of position	Terminal size	Type	Colour
211 PC013S0001	1	2.8 mm	Female housing	Black
211 PC013S1001	1	2.8 mm	Female housing	Brown
211 PC013S8001	1	2.8 mm	Female housing	Grey
211 PC013S9001	1	2.8 mm	Female housing	White
211 PC023S0001	2	2.8 mm	Female housing	Black
211 PC023S1001	2	2.8 mm	Female housing	Brown
211 PC023S5001	2	2.8 mm	Female housing	Green
211 PC023S7001	2	2.8 mm	Female housing	Violet
211 PC023S8001	2	2.8 mm	Female housing	Grey

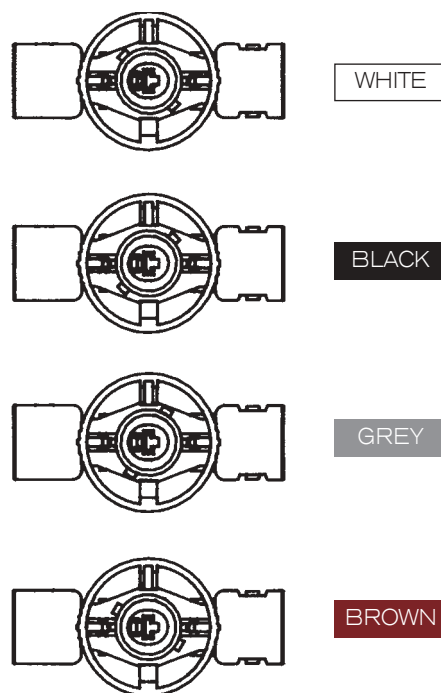
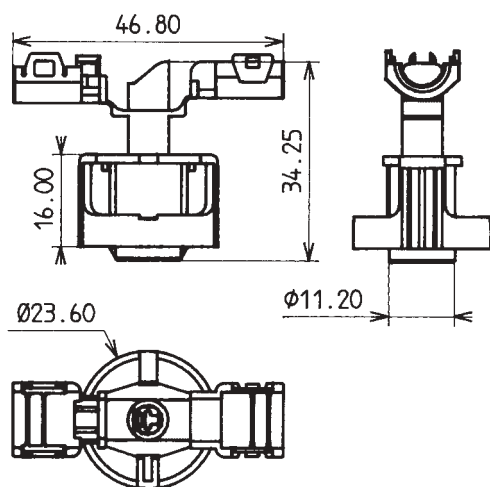
Component-to-wire connectors **FCI**

Sicma

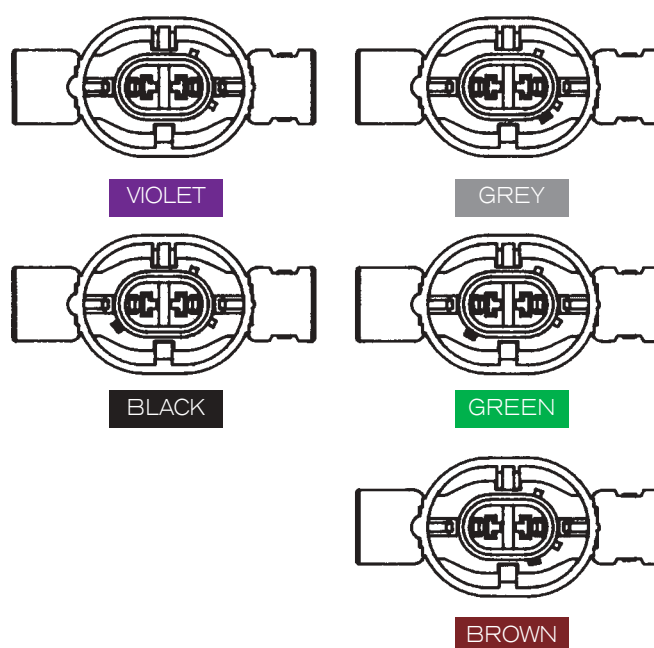
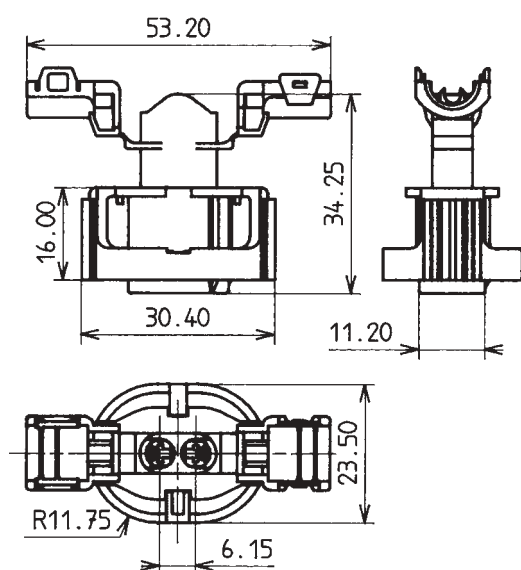
1 & 2 way sealed female housings for 2.8 mm terminals

Dimensional characteristics

1 way housing



2 way housing



Mouser Electronics

Authorized Distributor

Click to View Pricing, Inventory, Delivery & Lifecycle Information:

[Aptiv:](#)

[211PC023S5001](#) [211PC023S0001](#) [211PC023S8001](#) [211PC023S7001](#)