

Coupling connectors

SICMA

2 way sealed coupling housings for 1.5 mm terminals

Features

- Reduced size sealed housings
- Female part can be used as an aggregate housing
- Circumferential interface seal on male housing
- Rear sealing ensured by a pre-mounted grommet
- Pre-assembled front grids support blade terminal guiding and mating
- Terminal position assurance (T.P.A.)
- Filler plug available for male and female housings
- Several colour codings available



Part Numbers	No. of Position	Terminal size	Type	Colour
210 PC022S9004	2	1.5 mm	Female housing	White
210 PC022S0004	2	1.5 mm	Female housing	Black
210 PC022S8004	2	1.5 mm	Female housing	Grey
210 PC022S6004	2	1.5 mm	Female housing	Blue
210 PL022S9004	2	1.5 x 0.8 mm	Male housing	White
210 PL022S0004	2	1.5 x 0.8 mm	Male housing	Black
210 PL022S8004	2	1.5 x 0.8 mm	Male housing	Grey
210 PL022S6004	2	1.5 x 0.8 mm	Male housing	Blue
210 A027005			Filler plug for female housing	Violet
210 A027017			Filler plug for male housing	Violet
210 A010019			Filler plug	

Performance characteristics

- Temperature range :
from -40°C to +125°C
- Contact retention force : > 65 N
- Contact insertion force : < 15 N
- Housing locking strength : > 150 N
- Sealing protection : IP 68
- Acceptable wire range :
from 0.6 to 2 mm²

Construction

- Housing material : PBT
- Circumferential interface seal: Silicone
- Rear grommet : Silicone

Tooling

- T.P.A. removal tool : 210S040
- Terminal removal tool
 - Female terminal : 210S041
 - Male terminal : 210S042

Connector compatibility

- Usable terminals :
 - Sicma-1 1.5 mm female terminals
 - Sicma-1 1.5 mm male terminals
 - Sicma-2 1.5 mm female terminals
 - Sicma-2 1.5 mm male terminals
 - Sicma-3 1.5 mm female terminals
 - Sicma-3 1.5 mm male terminals

Coupling connectors

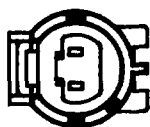
SICMA

Dimensional characteristics

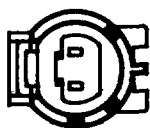
Codings



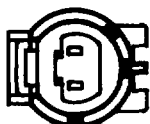
BLUE



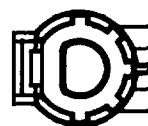
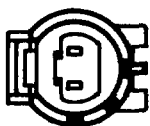
GREY



BLACK



WHITE

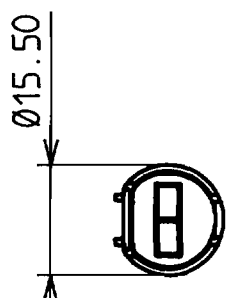
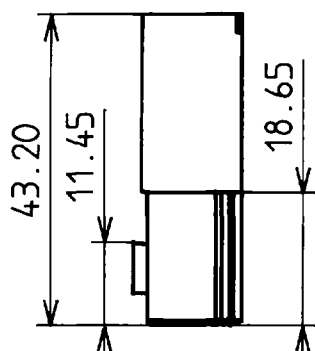


Ø16.80

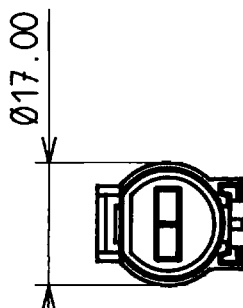
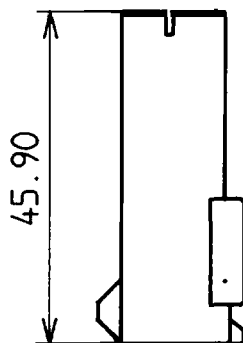


Ø16.20

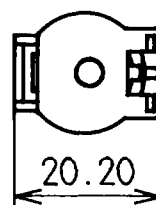
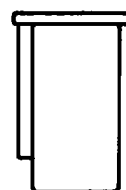
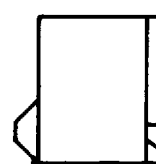
Female housing



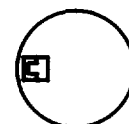
Male housing



Filler plug



20.20



Mouser Electronics

Authorized Distributor

Click to View Pricing, Inventory, Delivery & Lifecycle Information:

[Aptiv:](#)

[210PC022S8004](#) [210PC022S0004](#)