

PART-NO.: 10717597 COD 1

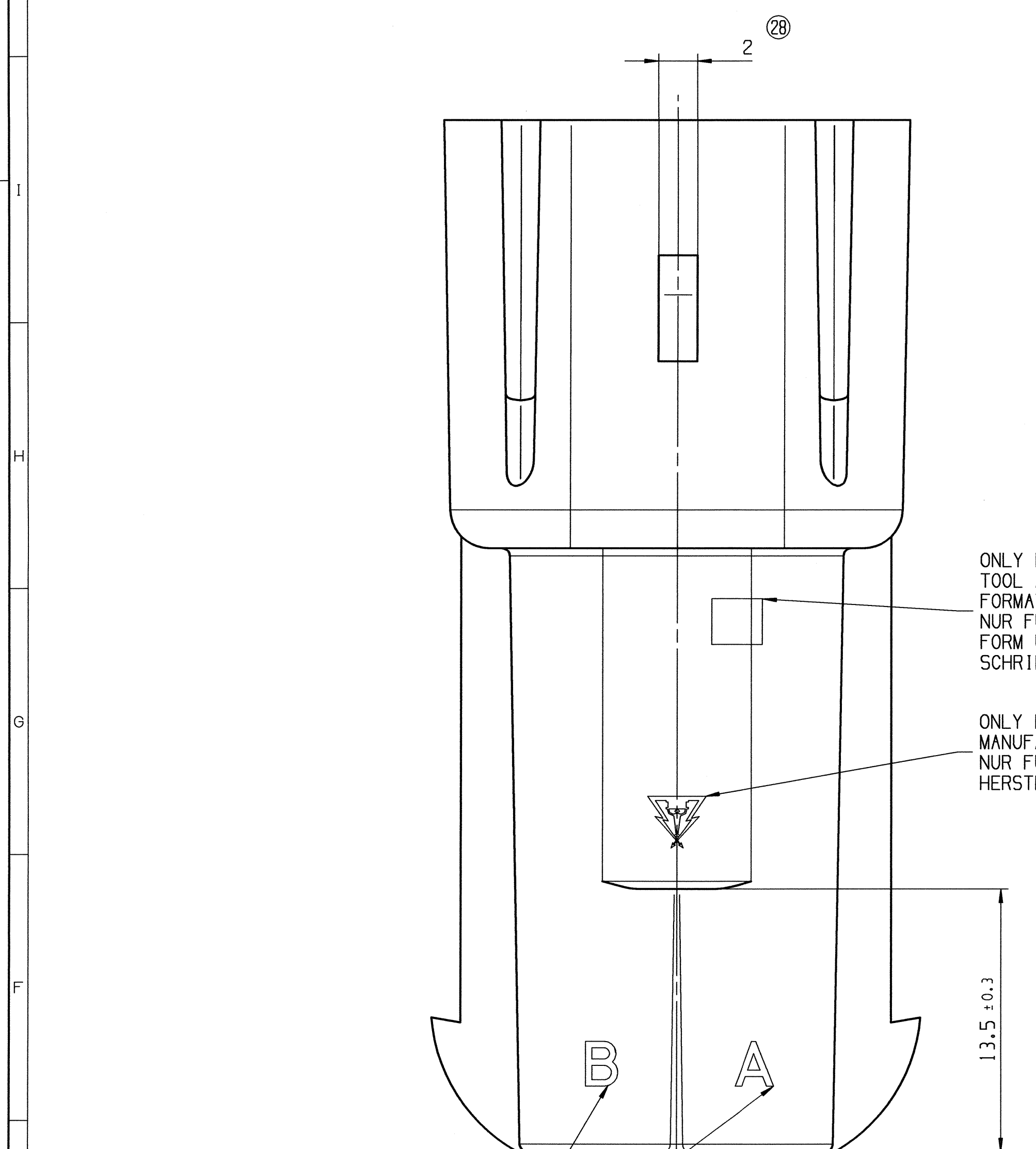
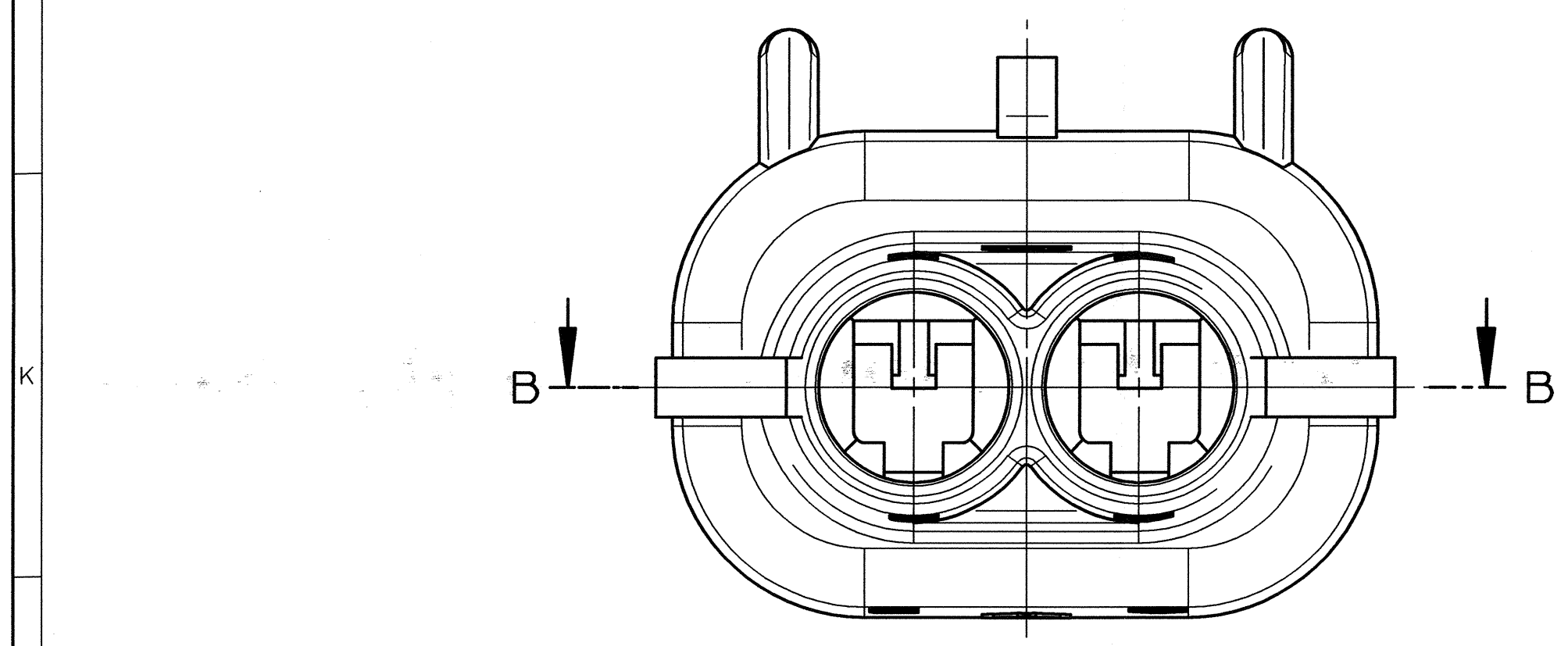
KEY PRODUCT CHARACTERISTICS

NO & TYPE	DESCRIPTION	RATIONALE	PIS	ZONE
-	-	-	-	-

COD	TITLE	BENENNUNG	PART-NO.	PART-REV	DATE	AMOUNT	CABLE SEALS	MATERIAL	RAL	MATING PART
1	TAB HOUSING 2 WAY	FLACHSTECKERGEHÄUSE 2 POL.	10717597	35	05FE03	1	---	PA 6 BK	9005	10719110/402 338
2	TAB HOUSING 2 WAY	FLACHSTECKERGEHÄUSE 2 POL.	15457700	01	05FE03	1	---	PA 6 BK	9005	10720609/413 188
3	TAB METRI PACK 280	FLACHSTECKER METRI PACK 280	12048159	662 557	---	---	12034365; 15324982	---	---	---
4	TAB METRI PACK 280	FLACHSTECKER METRI PACK 280	15363932	413 121	---	---	15338470; 15363980	---	---	---
5	TAB METRI PACK 280	FLACHSTECKER METRI PACK 280	12040559	690 135	---	---	15363980; 15363991	---	---	---
6	TAB METRI PACK 280	FLACHSTECKER METRI PACK 280	12048254	611 479	---	---	10717640	---	---	---
7	BLINDSTOPFEN	---	12010300	---	---	---	---	---	---	---

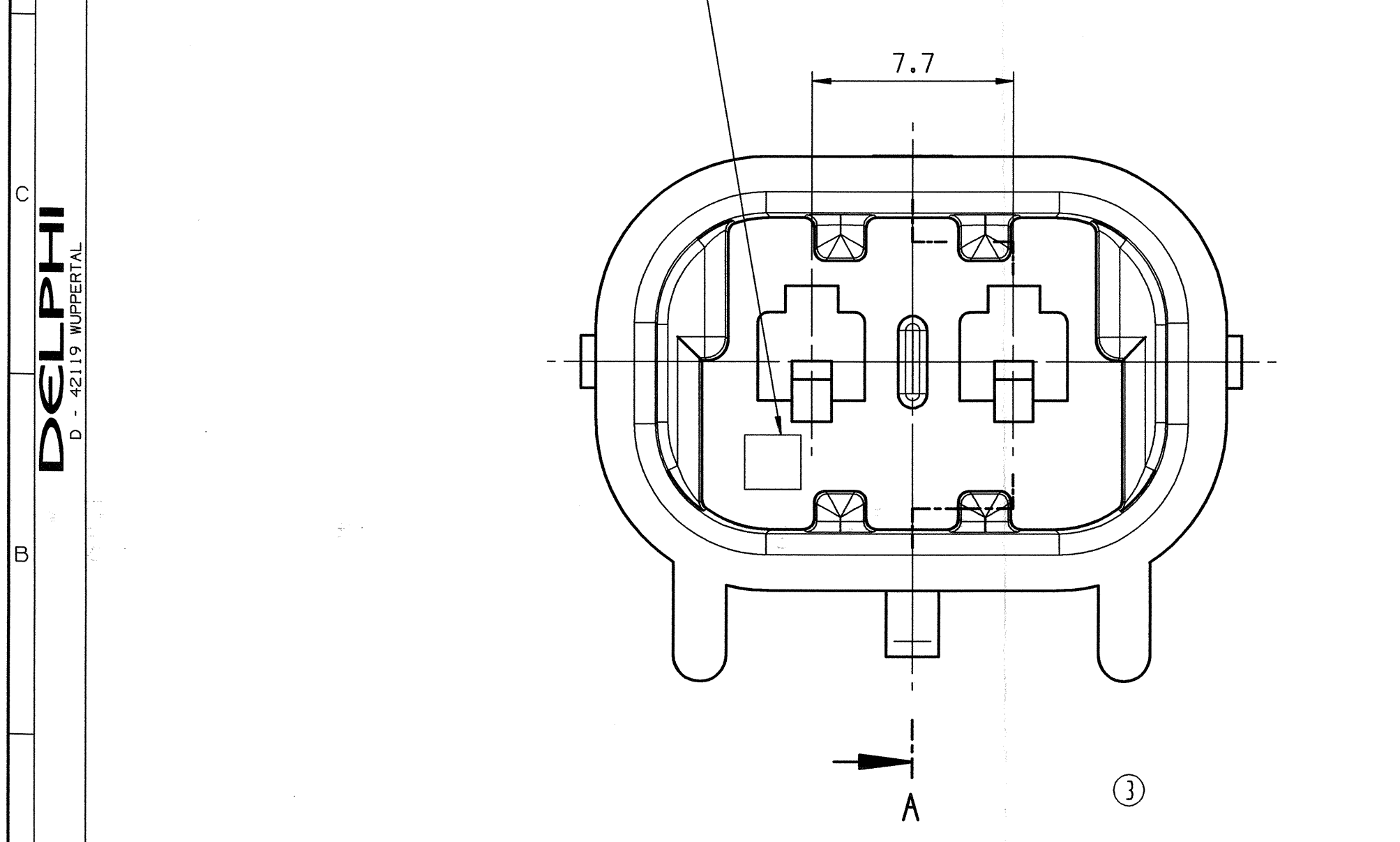
NOTES	BEWERTUNG
WITH CLIP SLOT FOR 15358660; 15358692	---
NO DESIGNED (CABLE CROSS-SECTION 0,5-0,8 MM ²)	---
NICHT BEZEICHNET (LEITUNGSQUERSCHNITT 0,5-0,8 MM ²)	---
NO DESIGNED (CABLE CROSS-SECTION 1,0-2,0 MM ²)	---
NICHT BEZEICHNET (LEITUNGSQUERSCHNITT 1,0-2,0 MM ²)	---
NO DESIGNED (CABLE CROSS-SECTION 2,0-3,0 MM ²)	---
NICHT BEZEICHNET (LEITUNGSQUERSCHNITT 2,0-3,0 MM ²)	---

ZONE	DWG STATUS	REV	WUPP	DATE	NAME	CHECK	STOCK
01	---	---	---	---	---	---	---
A14	---	---	---	---	---	---	---
J11	---	---	---	---	---	---	---
B3	---	---	---	---	---	---	---
A1	---	---	---	---	---	---	---
H10	---	---	---	---	---	---	---
J5	---	---	---	---	---	---	---
D14	---	---	---	---	---	---	---
J5	---	---	---	---	---	---	---
E16	---	---	---	---	---	---	---
I8	---	---	---	---	---	---	---
H10	---	---	---	---	---	---	---
J5	---	---	---	---	---	---	---
H12	---	---	---	---	---	---	---
H10	---	---	---	---	---	---	---
I10	---	---	---	---	---	---	---
H8	---	---	---	---	---	---	---
E16	---	---	---	---	---	---	---
H10	---	---	---	---	---	---	---
J14	---	---	---	---	---	---	---
E15	---	---	---	---	---	---	---
I9	---	---	---	---	---	---	---
H12	---	---	---	---	---	---	---
34	---	---	---	---	---	---	---
E4	---	---	---	---	---	---	---
AA	---	---	---	---	---	---	---



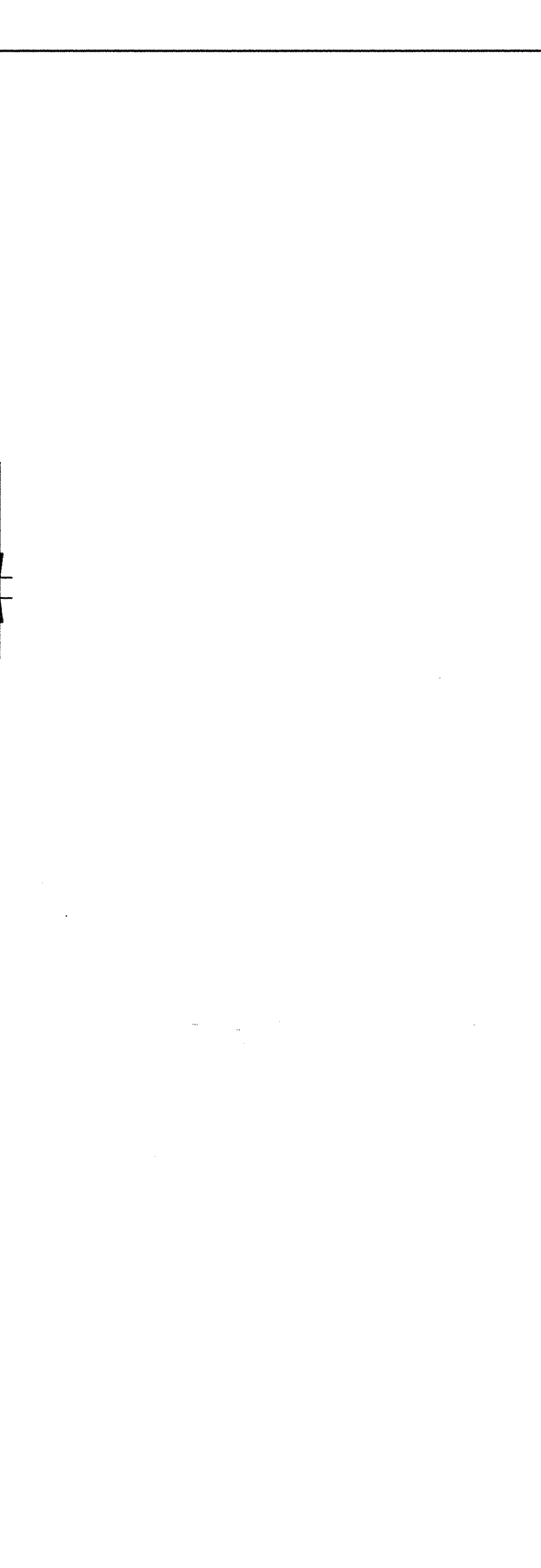
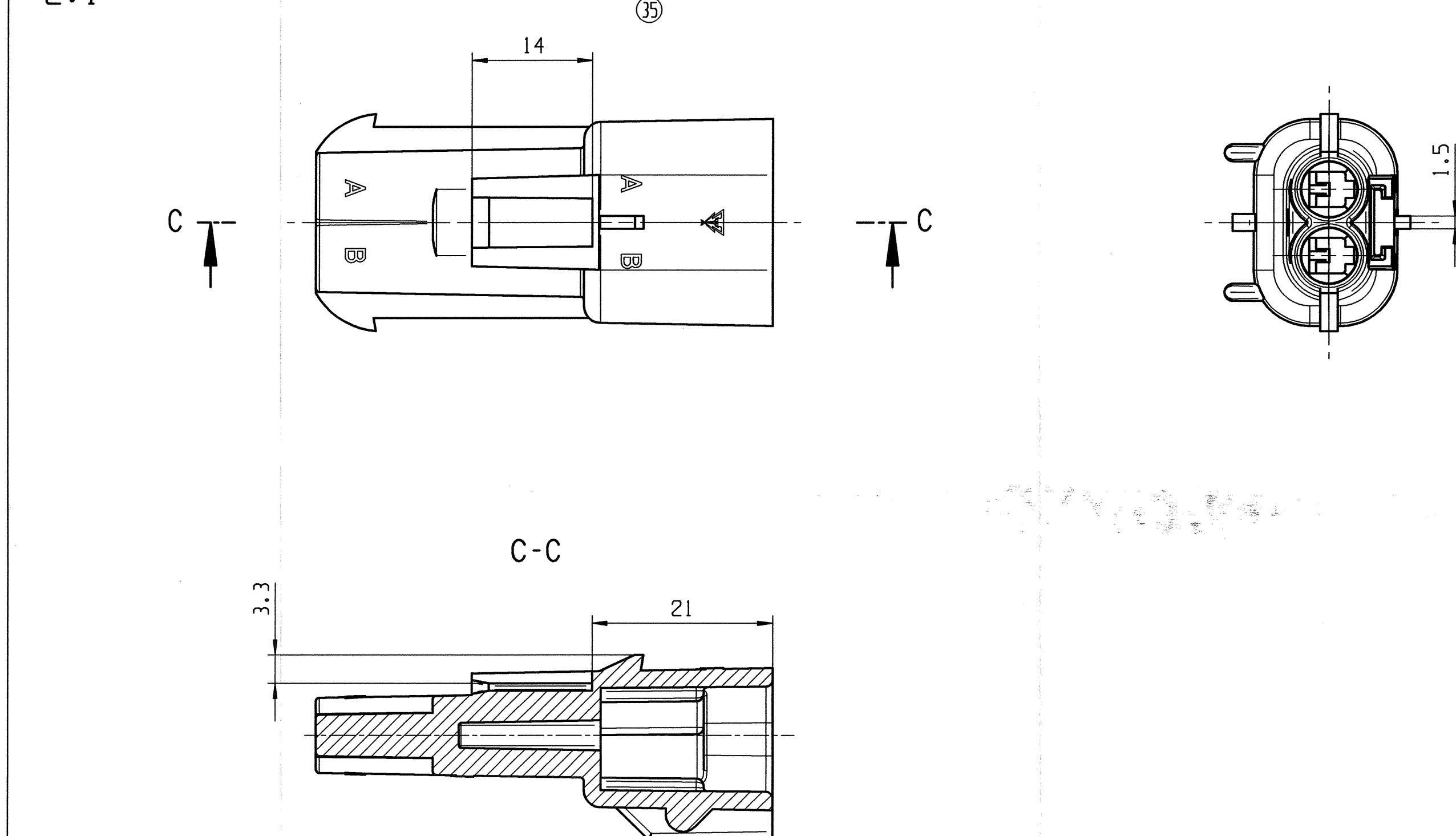
ONLY FOR D AND NEW PRODUCTION TOOL
TOOL CAVITY NUMBER / FORMAT
ACCORDING TO DIN 1451; H=1.5 MM
NUR FUER D - UND NEUWERKZEUGE
FORM UND NESTKENNZEICHNUNG
SCHRIFTART NACH DIN 1451; H=1.5 MM

ONLY FOR C - PRODUCTION TOOL
TOOL CAVITY NUMBER / FORMAT
ACCORDING TO DIN 1451; H=1.5 MM
NUR FUER C - WERKZEUG
FORM UND NESTKENNZEICHNUNG
SCHRIFTART NACH DIN 1451; H=1.5 MM



PART-NO.: 15457700 COD 2

SCALE/MASSTAB
2:1



REMARKS:
- MATING SECONDARY LOCK: PART-NO.: 15344855

BEWERTUNGEN:
- PASSENDE ZWEITVERRIEGELUNG: PART-NO.: 15344855

<input type="checkbox"/> DIM TO CHECK PRUEFMASSE	<div><div></div><div>0.2 MAX</div></div>	DIMENSIONAL RANGE (MM)											
<input type="checkbox"/> DIM FOR HELP HILFSMASSE		NENNSMASSE (KG)											
		FROM	TO	0	> 20	> 30	> 70	> 100	> 150	> 200	> 250	> 300	> 400
							100	150	200	250	300	400	
<input type="checkbox"/> THEORETIC DIM THEORE. MASSE	<div><div></div><div>0.1 MAX</div></div>	TOLERANCE UNLESS OTHERWISE SPECIFIED											
		ALGEBRAIC INTERPOLATION											
		$\pm 0.15; \pm 0.2; \pm 0.3; \pm 0.4; \pm 0.5; \pm 0.6; \pm 0.8; \pm 1.0; \pm 1.2$											
		ANGULAR TOLERANCE : 2°											
		MINUEL TOLERANCE : 2'											

DELPHI
D - 42119 WUPPERTAL

SCALE/MASSTAB
1:1

REVISION HISTORY

REV	DATE	NAME	CHECK	STOCK
01	05FE03	PWOZ	---	---
02	05FE03	HACKEL	---	---

SEE CHART / SIEHE TABELLE

TAB HOUSING 2 WAY
FOR METRI-PACK 280
FLACHSTECKERGEHÄUSE 2 POL.
FUER METRI-PACK 280

DRAWING NO.: 15457701
PAGE: 01-01
STATUS: K
SCALE/MASSTAB: 5:1
FORMAT: A0

Mouser Electronics

Authorized Distributor

Click to View Pricing, Inventory, Delivery & Lifecycle Information:

[Aptiv:](#)

[10717597](#)