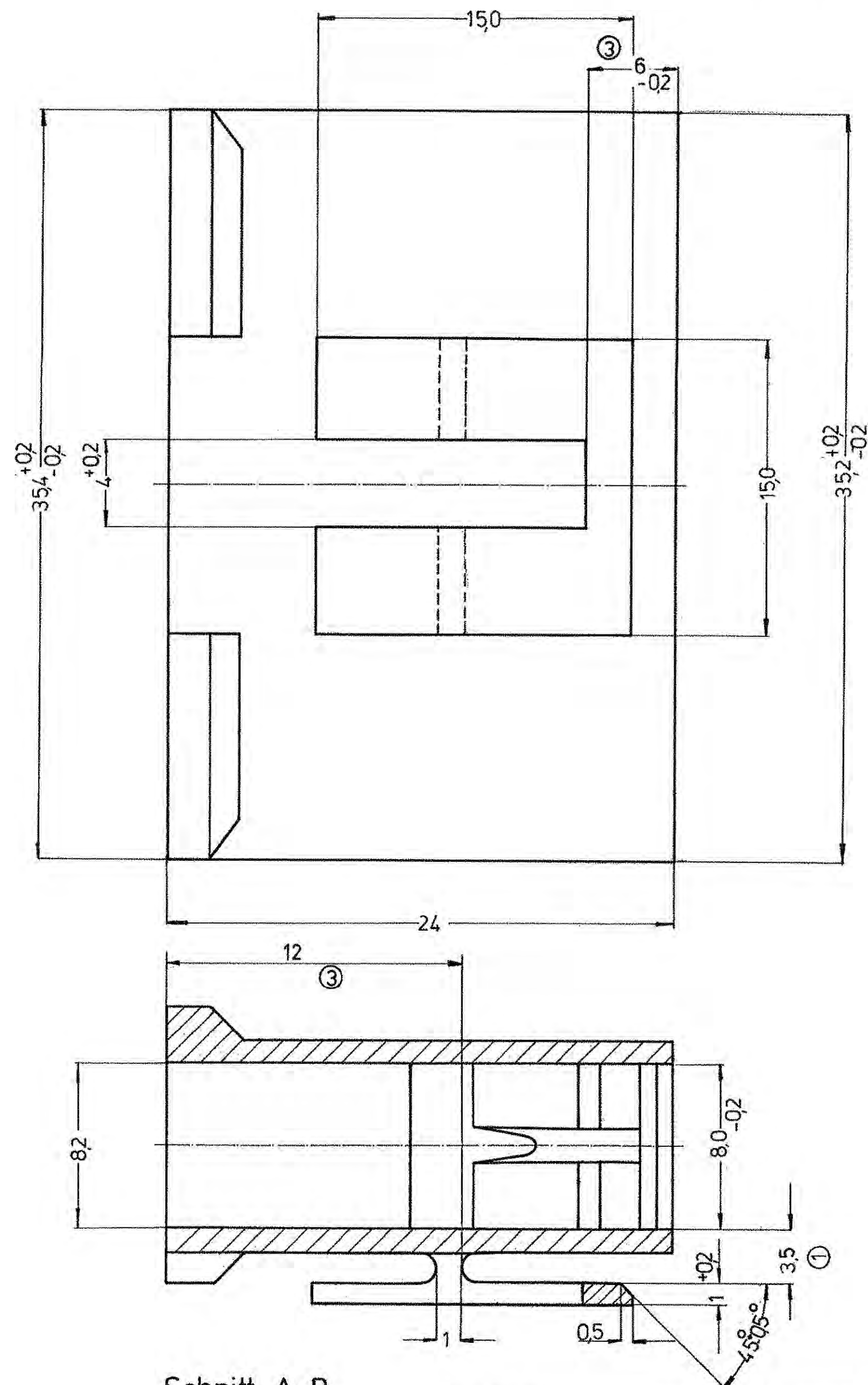
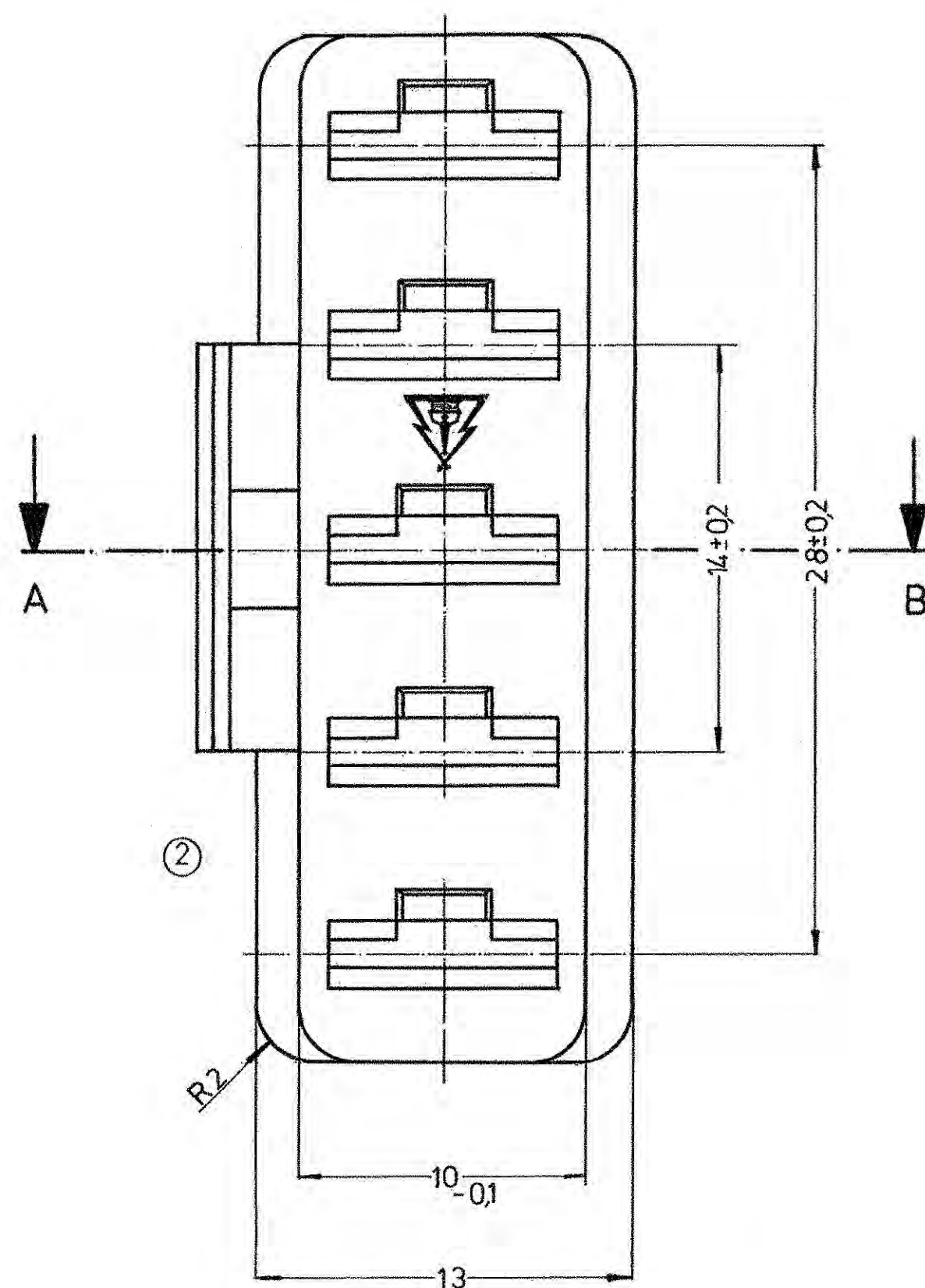


AK - Nr.:	ID - Nr.:	Part - No.:	Werkstoff	Farbe
3569	405995	10717590	PA6	BLK



Schnitt A-B

unbemaßte Wandstärken 1 mm

**DELPHI**  
D - 42159 WUPPERTAL

**Drawing-No.:**  
**13678346**

**AK 3569**

						Formtoleranzen										Werkstoff																																																																																																																																																																																																																																																																																																																																																																																																																																																																																																																																																																																																																																																																																																																																																																																																																																																																																																																																																																																																																																																																																																																																																																																																																																																																																																																																																																																																																																																																																																																																																																		

# Mouser Electronics

Authorized Distributor

Click to View Pricing, Inventory, Delivery & Lifecycle Information:

[Aptiv:](#)

[10717590](#) [10717590-B](#)