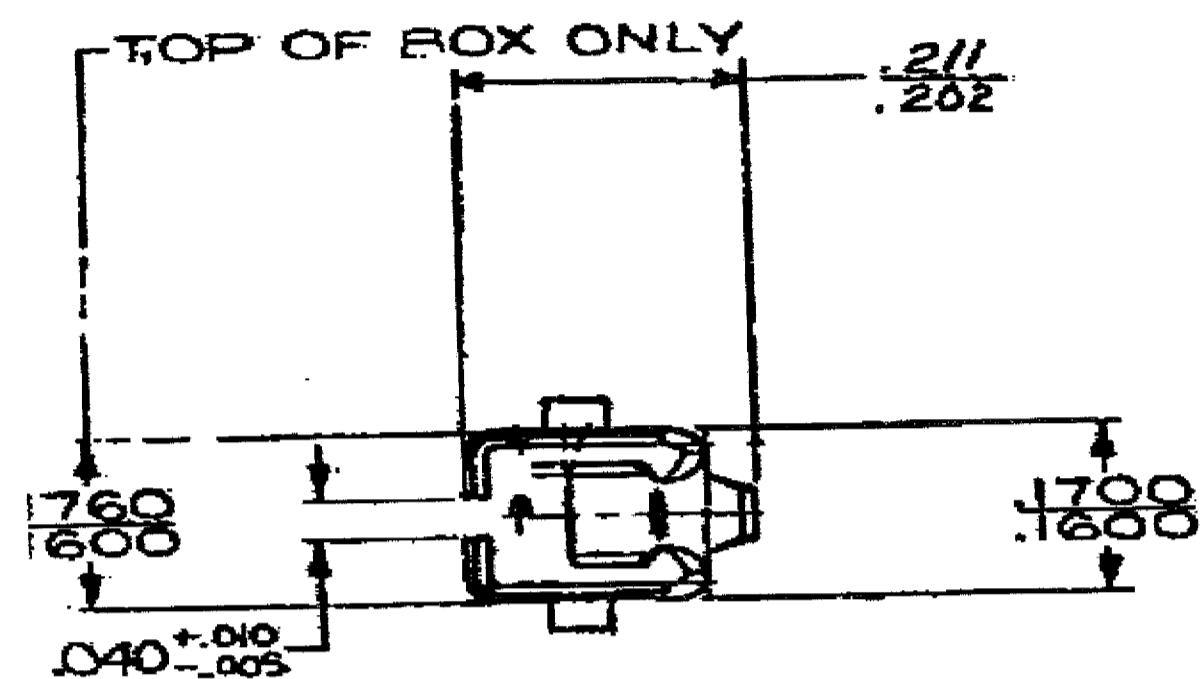
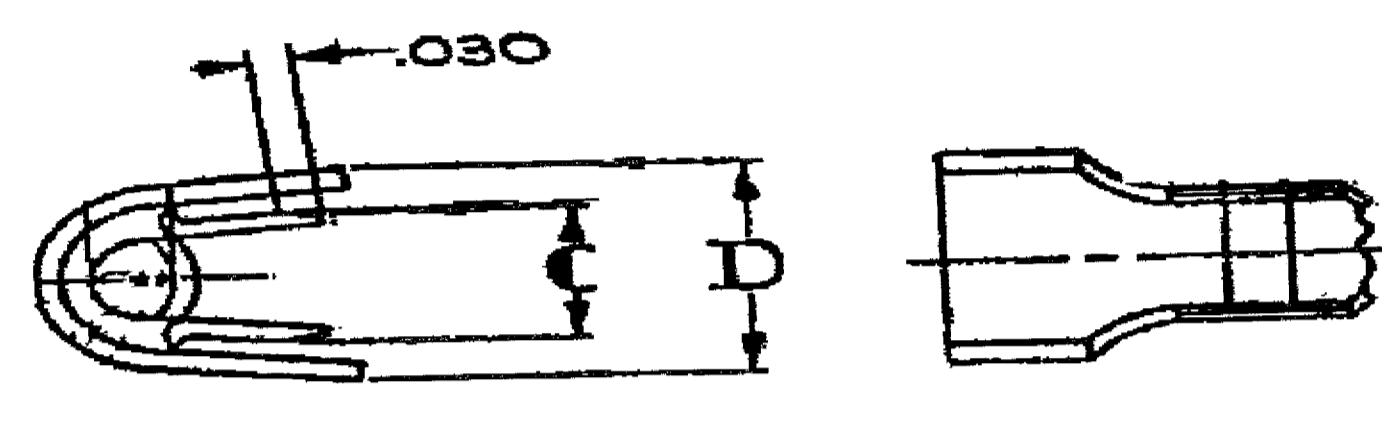
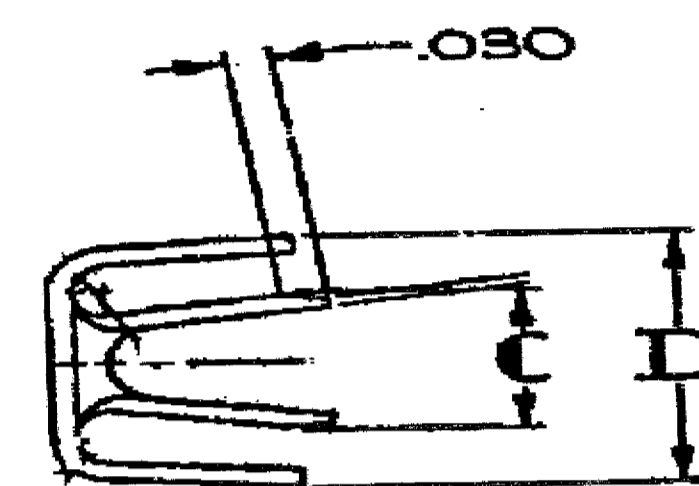
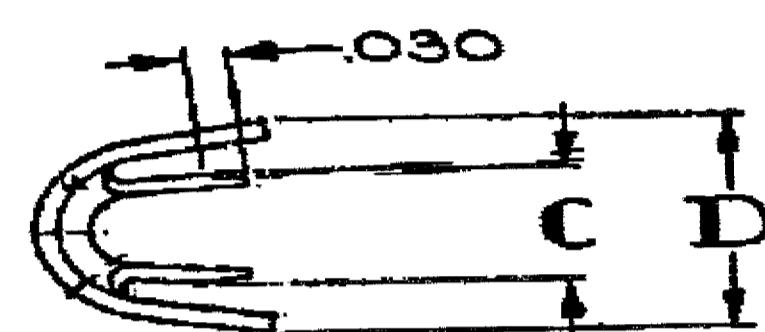
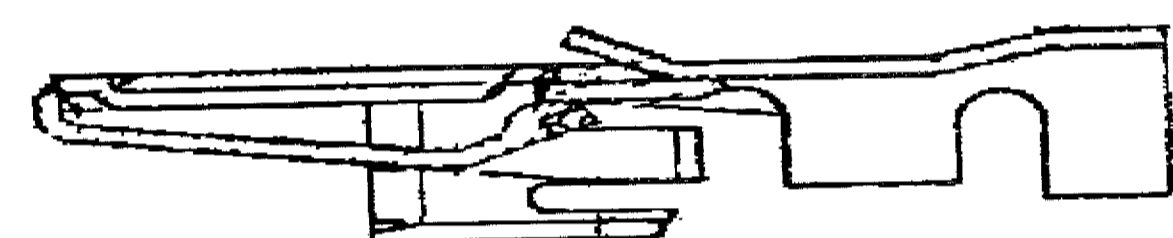
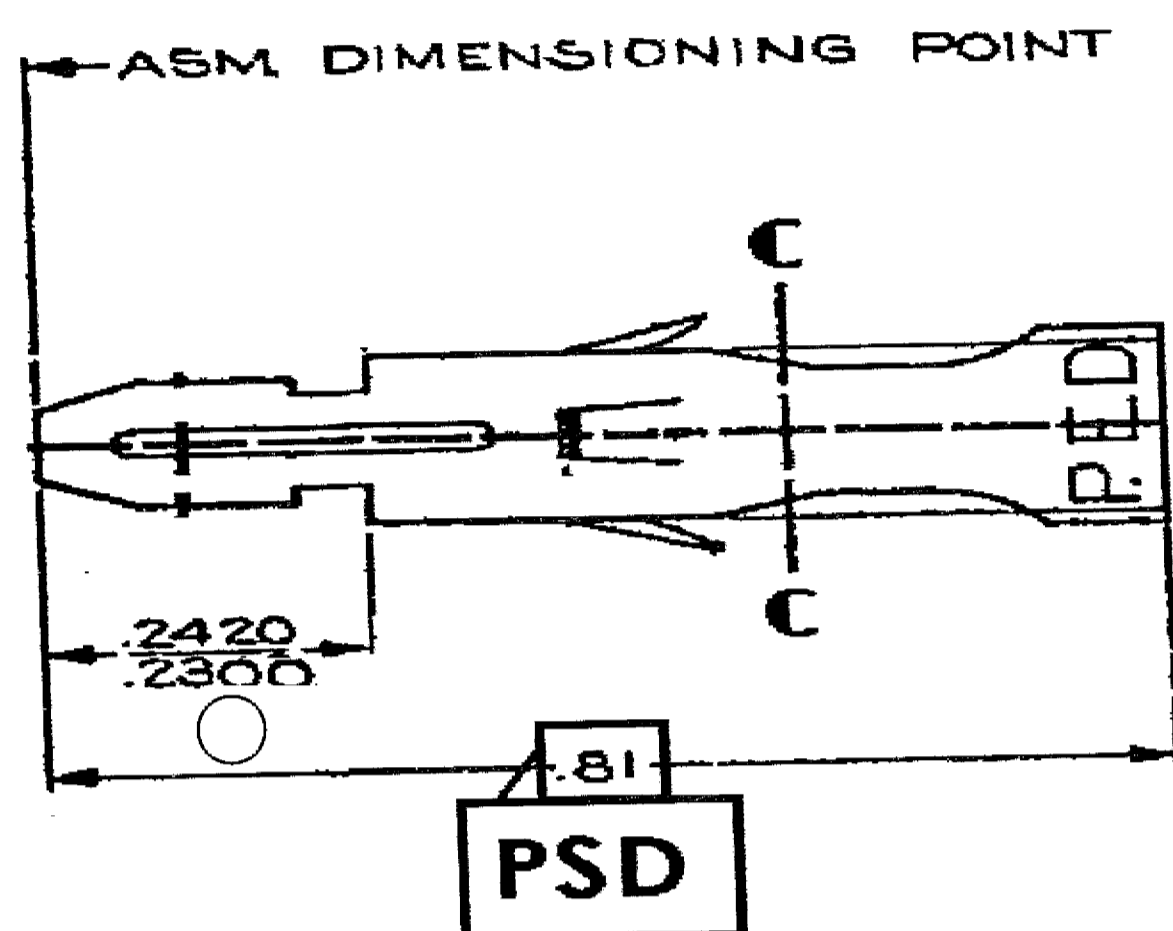


CWS STATUS					REVISION HISTORY					AUTH			DR			APVD		
DATE	STG	REV	N/R	ZONE														
27AUG03	R	01	-	-					CLEARED REV COL AND CREATED PD	244495	AFM	AFM	EDR					
01SEP04	R	02	-	-					ALL ACTIVE PARTS - REVISED TOLERANCE CHART	258647	TLD	TLD	OR					
11FEB11	R	03	-	-					ALL ACTIVE PARTS - .2420/.2300 WAS .2420/.2350 AND UPDATED REV COLUMNS ON CHART	413304	AHY	JAA	CRD					
12MAY15	R	04	-	-					UPDATED PDM ATTRIBUTES	429582	LES	LES	VMR					
28JUL15	R	05	-	-					02973917 & 02977046 - OBSOLETE	429954	LES	LES	VMR					



VIEW TO C-C



WING CONST. I

WING CONST. II

WING CONST. III

NOTES

- UNLESS OTHERWISE SPECIFIED AND/OR INDICATED: DIMENSIONS ARE TO FACE OF VIEW SHOWN AND AUTOMATICALLY ROUNDED BY COMPUTER FOR INSPECTION (SEE MATH MODEL FOR PRECISE DIMENSIONS). FOR ALL OTHER DIMENSIONS NOT SHOWN BUT REQUIRED FOR TOOL BUILD, SEE MATH MODEL FOR PRECISE TOOL PATH DATA.
- THIS PART IS SYMMETRICAL ABOUT HORIZONTAL CENTER LINE.
- TONGUE & BOX MUST BE FREE OF BURRS.
- ENGAGE FORCE WHEN MATED UUT A LIKE TERMINAL TO BE 1.75* MIN, -4.00* MAX
- DO NOT PROBE, TEST OR OTHERWISE CONTACT THE INTERIOR REGION (THE SPRING OR ANY MOVING PART) OF THIS TERMINAL. SEVERE DAMAGE CAN OCCUR, COMPROMISING THE PERFORMANCE OF THE ELECTRICAL INTERFACE.

-	-	.0160 X 1.281	-	06294481	AL	P-1546027	-	-	III	I	10	.225-.195	1.225-.195	.32	10		
-	-	.0160 X 1.281	-	06288953	AM6	P-1519027	-	-	II	I	12	.139-.161	.195-.165	.227	.18 12		
-	-	.0160 X 1.281	-	02989838	AM	P1519027	-	-	I	I	TWO-16	.101-.126	.135	.220	.18 216		
02984454	AM	.0160 X 1.281	M-1527-027	02984438	AM	N-527027	02984444	OBSOLETE	V-527027	I	I	14-16	.101-.142	.135	.200 .18		
02984453	AM	.0160 X 1.281	M-1527-027	02984437	AM	N-527027	02984443	OBSOLETE	V-527027	I	I	18-20	.081-.114	.115	.170 .18		
02984452	AL	.0160 X 1.281	M-1527-027	02984079	AL	N-527027	02984442	OBSOLETE	V-527027	II	I	12	.139-.161	.195-.165	.227 .18 12		
-	-	.0160 X 1.281	-	02979858	AM	P-519027	-	-	-	III	I	24 & 18-20	.081-.087/.081-.114	.135	.200 .18		
-	-	.0160 X 1.281	-	02979856	AN5	P-519027	-	-	-	I	II	TWO 18-20	.081-.114	.135	.240 .18 219		
02984451	AM	.0160 X 1.281	M-1546-027	02973917	AM7	P-1546027	02984441	OBSOLETE	V-546027	I	I	12	.139-.161	.195-.165	.227 .18 12		
02984450	AM4	.0160 X 1.281	S-519027	02973916	AM6	P-1519027	02984440	OBSOLETE	V-519027	I	I	14-16	.101-.142	.135	.200 .18 15		
02984449	AM4	.0160 X 1.281	S-519027	02973915	AM6	P-1519027	02984439	OBSOLETE	V-519027	I	I	18-20	.081-.114	.115	.170 .18 19		
PART NO	REV	MAT'L SIZE	SPEC	PART NO	REV	SPEC	PART NO	STATUS	MAT'L SPEC	TYPE	WING CONST	CABLE GA.	CABLE DIA.	C	D	STRIP	CABLE I.D. NO.
		UNPLATED				TIN PLATED			SILVER PLATED					±.010	±.010		

TOLERANCE UNLESS OTHERWISE SPECIFIED:
DECIMAL .010
ONE PLACE .010
TWO PLACE .010
THREE PLACE .010

THIRD ANGLE PROJECTION
DO NOT SCALE
USE MATH DATA

DELPHI DELPHI PACKARD ELECTRICAL/ELECTRONIC ARCHITECTURE WARREN, OH COPYRIGHT DELPHI CORPORATION AND/OR ITS AFFILIATES. ALL RIGHTS RESERVED. THIS DRAWING IS THE PROPERTY OF DELPHI CORPORATION AND CONTAINS DELPHI CONFIDENTIAL INFORMATION. THE REPRODUCTION, DISTRIBUTION AND UTILIZATION OF THIS DOCUMENT OR ITS RELATED CAD DATA, AS WELL AS COMMUNICATION OF ANY CONTENT TO OTHERS, WITHOUT EXPRESS AUTHORIZATION, IS PROHIBITED.	
DR	DATE
APVD1 C. PATTERSON	09SEP00
APVD2 G. A. HASH	06OCT00
APVD3 R. D. KEARNS	06OCT00
APVD4	
APVD5	
SUBSTANCES OF CONCERN AND RECYCLED CONTENT, PER DELPHI (0244900)	
DRAWING NUMBER 02977206	
SIZE A0	SCALE NONE
FRAME NO 1 OF 1	SHEET NO 1 OF 1
STG REV N/P	05

Mouser Electronics

Authorized Distributor

Click to View Pricing, Inventory, Delivery & Lifecycle Information:

[Aptiv:](#)

[02973915](#) [02973915-L](#)