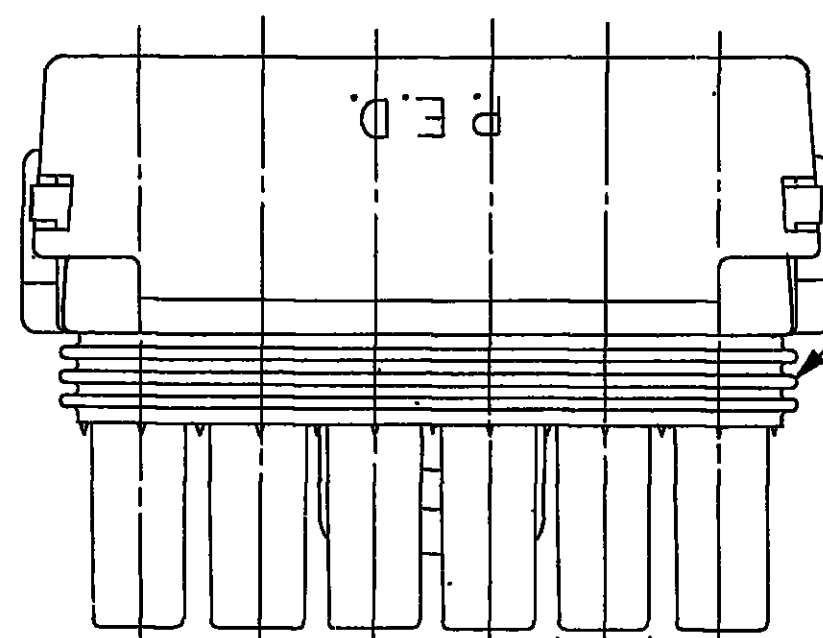


THIS DRAWING AND DESIGN HEREON CONSTITUTES A PROPRIETARY DESIGN OF PACKARD ELECTRIC DIVISION AND IS NOT TO BE DUPLICATED OR REPRODUCED WITHOUT AUTHORITY OF PACKARD ELECTRIC DIVISION.

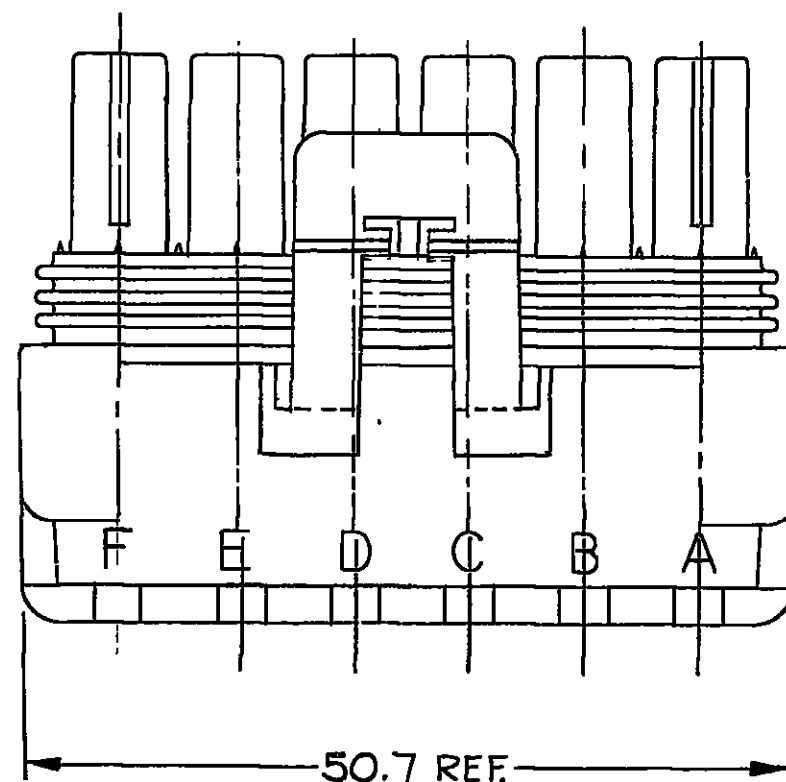


6.15 DIA.-6 PLCS.

Technical drawing of a mechanical component, likely a manifold or valve assembly, showing a top view and a side view. The top view shows a rectangular block with six circular ports along the top edge. The side view shows the internal structure, including a central passage and a valve mechanism. Dimensions are provided in inches.

Dimensions (inches):

- Overall width: 52.1 REF
- Overall height: 38.50
- Distance from left face to center of first port: 30.80
- Distance between centers of adjacent ports: 23.10
- Distance from center of first port to center of valve mechanism: 15.40
- Distance from center of valve mechanism to center of last port: 7.70



-ASM. DIMENSIONING POINT.

6. WHEN DESIGNING A PART TO MATE TO THIS WEATHER-PACK CONNECTOR, REQUEST THE LATEST COPY OF DRAWING NUMBER 12020084 FROM PACKARD ELECTRIC DIVISION.

[illegible]

12020926

**DIMENSIONS ARE IN MILLIMETRES  
UNLESS OTHERWISE SPECIFIED**

P. N. C. CODE		C06D1615	
CODE NO. 6900		TOLERANCE UNLESS OTHERWISE SPECIFIED	
QC-C-5110		DECIMAL: ANGULAR $\pm 2^\circ$	
DWG. DATE 290C81		TWO PLACE $\pm 0.15$	
SCALE NONE		ONE PLACE $\pm 0.3$	
EST. NO.		DR Scott [Signature]	
REFERENCE NO 12015799		CP J. Muehry	
MATERIAL SPEC.		DATE 04NOB1	
NAME		DATE 05NOB1	
ASM CONN 6F W/P TWR		DATE 09NOB1	
PART NO.		SIZE	
1202 0926		C	

**PACKARD ELECTRIC**

# Mouser Electronics

Authorized Distributor

Click to View Pricing, Inventory, Delivery & Lifecycle Information:

[Aptiv:](#)

[12020926](#) [12020926-B](#)