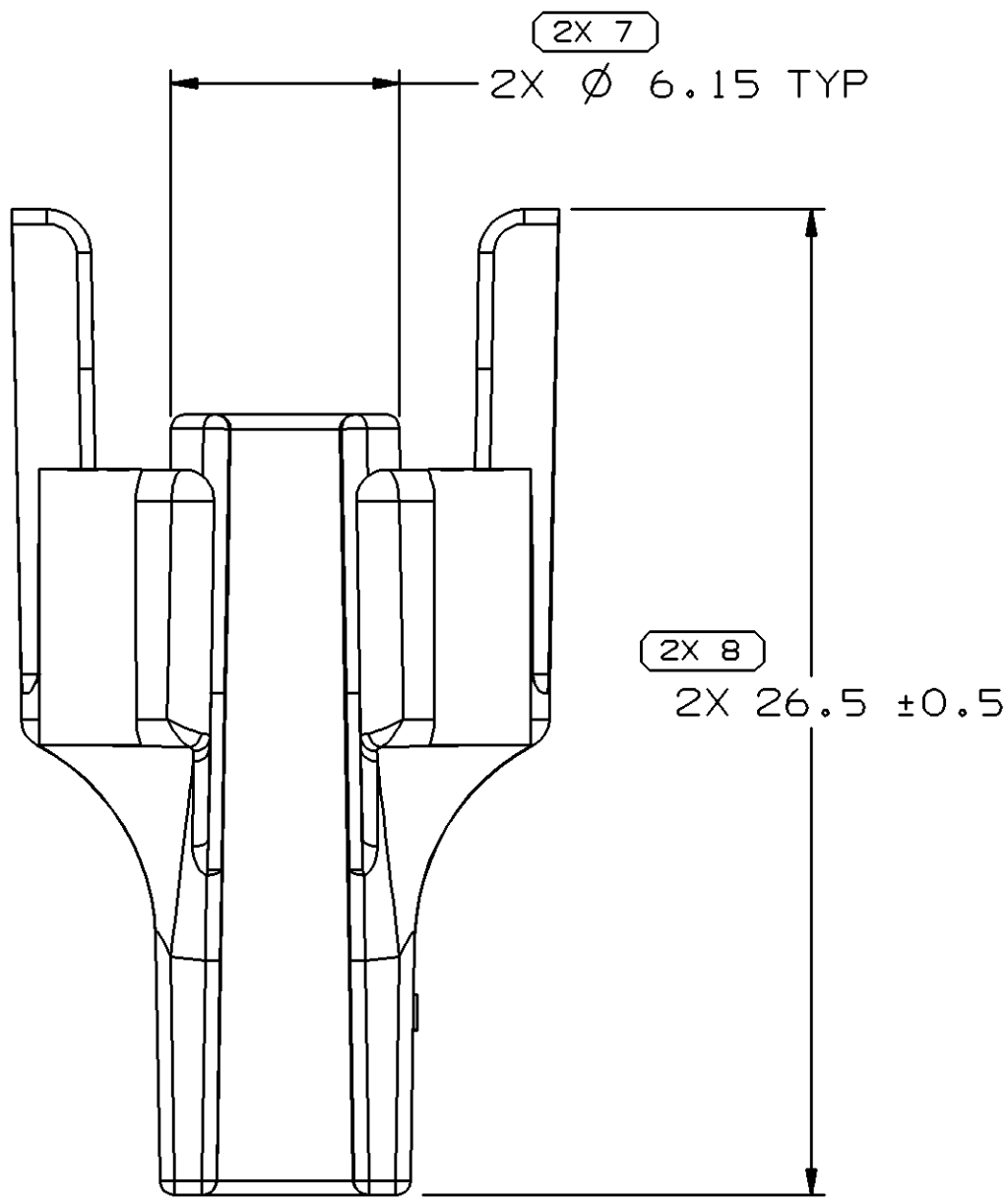
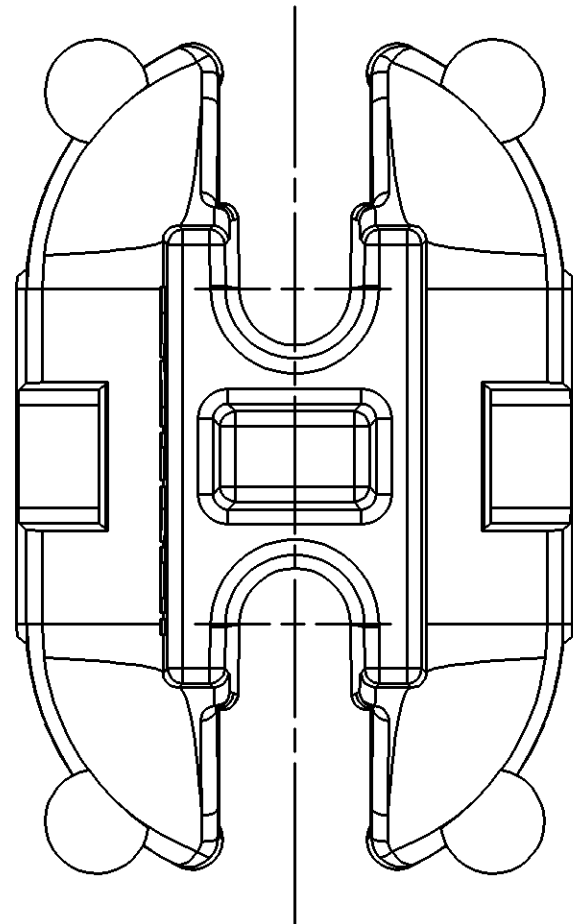
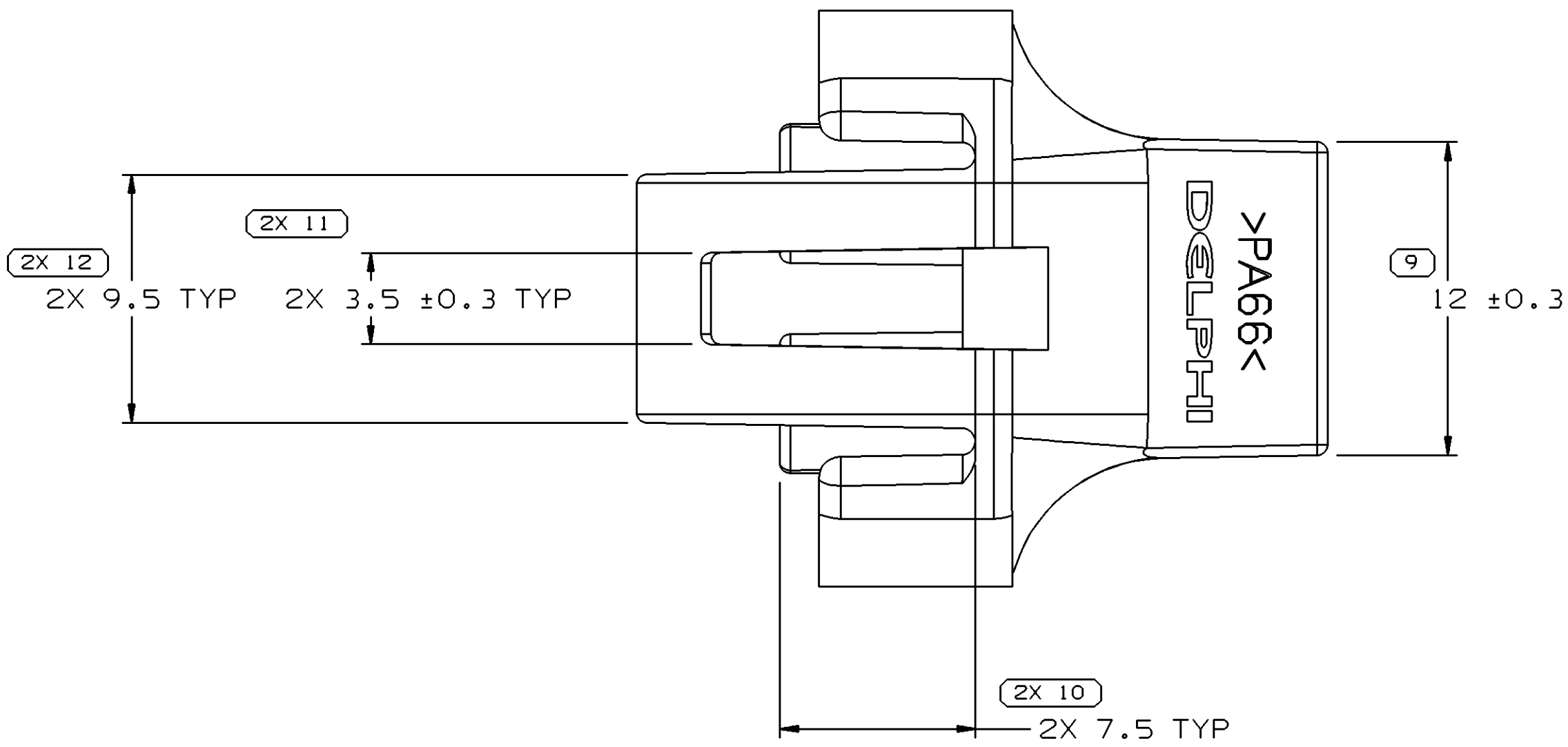
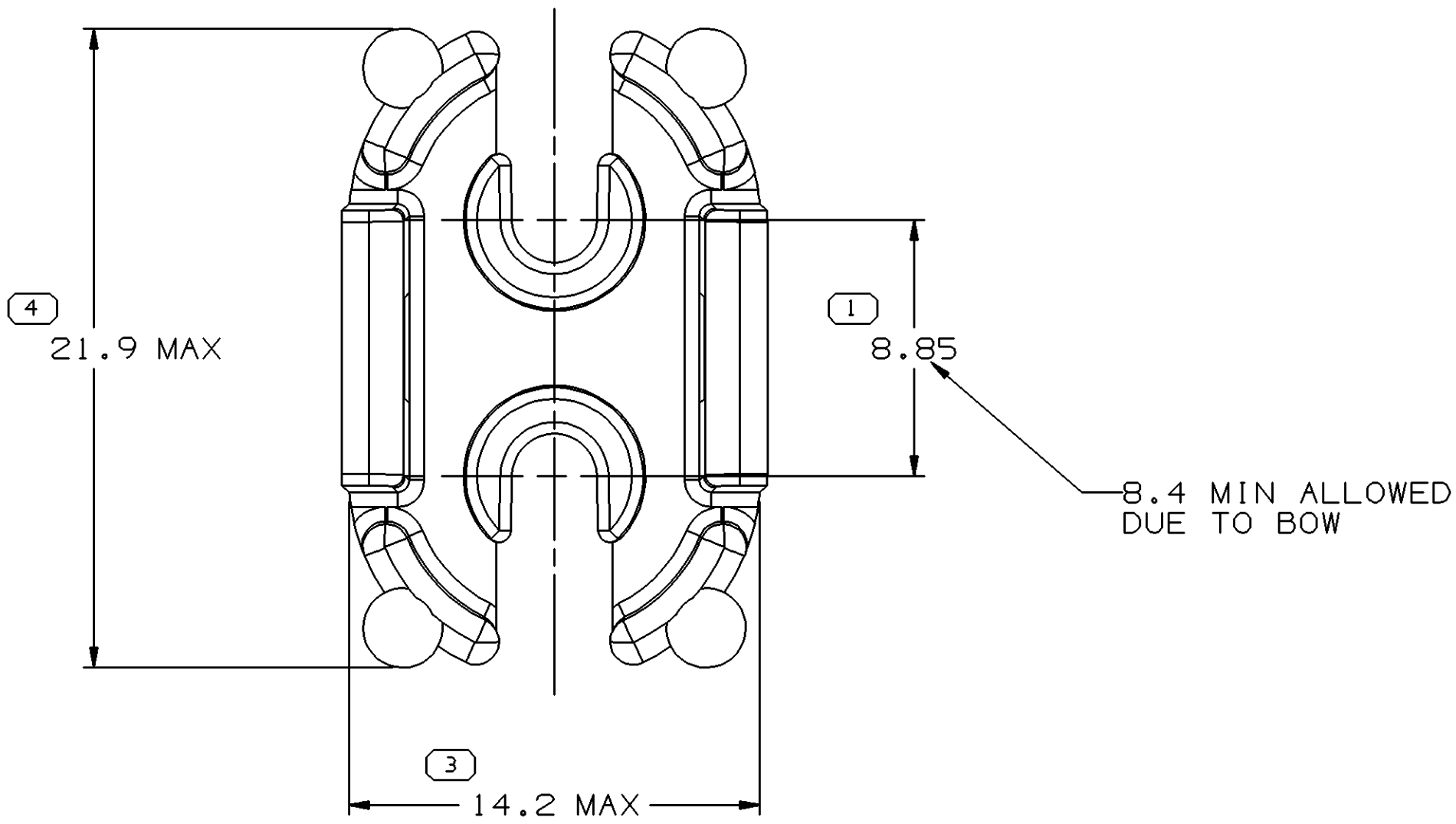
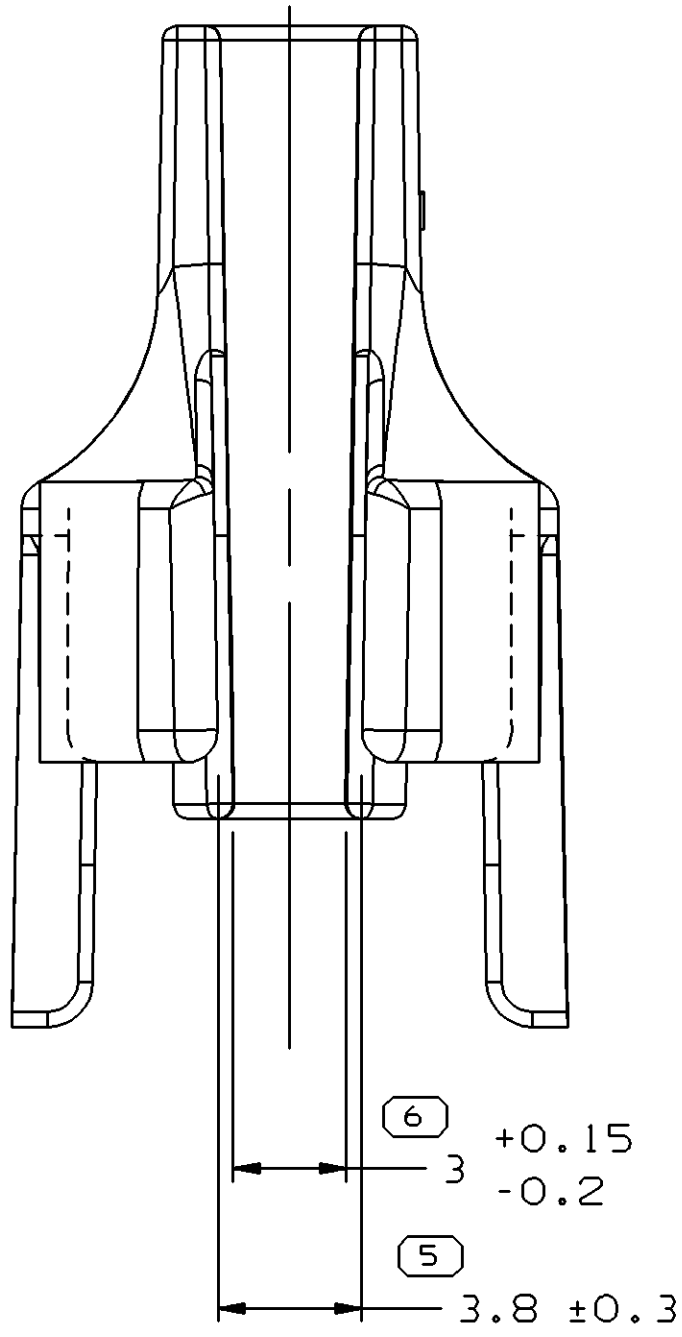
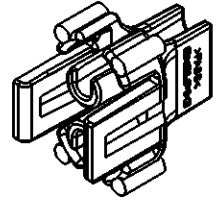


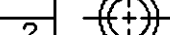
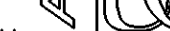

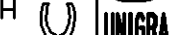
SYMBOL DEFINITION		MISSING SYMBOLS
A DIMENSION WITHOUT AN INSPECTION REPORT SYMBOL () DOES NOT REQUIRE INSPECTION. IT MAY BE CONTROLLED ON THE INDIVIDUAL COMPONENT DRAWING.	TOTAL NO OF INSPECTIONS REQUIRED	
	16	2
	LAST NO. USED	12

DATE		REV		N/P		CHG		ZONE		REVISION HISTORY		AUTH		DR		APVD	
28.JUN02	R	D4	-	-	-	-	-	-	-	CREATED PD		227411	RH	RH	ET		
17.JUN03	R	05	-	-	-	-	-	-	-	MATERIAL SPEC WAS M3596003 PA6 GRA MD		242537	EOV	EOV	ET		
16.JUL03	R	05	AA	-	-	-	-	-	-	REVISED NOTE		243563	JYD	JYD	EM		
20OCT03	R	05	AB	-	-	-	-	-	-	REMOVED WITNESS LINES, UPDATED MODEL		247067	LMB	LMB	TM		
29OCT03	R	05	AC	-	-	-	-	-	-	REMOVED DIM #2.		248098	LMB	LMB	TM		
31MY05	R	05	AD	-	-	-	-	-	-	ADDED NOTE 6		268650	GLG	JAA	MDM		



- NOTES
- UNLESS OTHERWISE SPECIFIED AND/OR INDICATED:
DIMENSIONS ARE TO FACE OF VIEW SHOWN AND AUTOMATICALLY ROUNDED BY COMPUTER FOR INSPECTION (SEE MATH MODEL FOR PRECISE DIMENSIONS). FOR ALL OTHER DIMENSIONS NOT SHOWN BUT REQUIRED FOR TOOL BUILD, SEE MATH MODEL FOR PRECISE TOOL PATH DATA.
 - MATERIAL RECYCLING CODE PER ISO 11469. (2.31X(0.1) RAISED CHARACTERS AS SHOWN TO BE LOCATED ON ANY EXTERIOR SURFACE. OPTIONAL CONSTRUCTION TO BE NO MATERIAL RECYCLING CODE.
 - THIS PART IS NOT CONTROLLED FOR AUTOMATIC FEEDING.
 - MATING COMPONENTS OR EQUIVALENT:
CONNECTOR 12124819
 - (2.31X(0.1) RAISED DELPHI CORPORATE BRAND TO BE LOCATED ON ANY EXTERIOR SURFACE, PREFERABLY VISIBLE AT FINAL ASSEMBLY. OPTIONAL CONSTRUCTION TO BE "PED" OR NO LOGO.
 - MAX. CABLE DIA. THAT WILL FIT PART IS Ø2.75



9 PROCESS SENSITIVE DIMENSION												REFERENCE					
DIMENSIONS ENCLOSED IN () INDICATE REFERENCE DIMENSIONS AND NO TOLERANCE LIMITS ARE ESTABLISHED																	
DIMENSIONAL RANGE (MM)										CHART		ET					
FROM	TO	0	20	30	70	100	150	200	250	300	400						
TOLERANCE UNLESS OTHERWISE SPECIFIED																	
±0.15 ±0.2 ±0.3 ±0.4 ±0.5 ±0.6 ±0.8 ±1 ±1.2																	
ANGULAR TOLERANCE 12°																	
												THIRD ANGLE PROJECTION		DO NOT SCALE			
														USE MATH DATA			

DELPHI						
DELPHI PACKARD ELECTRIC SYSTEMS WARREN, OH						
DR				DATE		
APVD1 R. HERMOSILLO				28.JUN02		
APVD2 R. HERMOSILLO				28.JUN02		
APVD3 E. TRACEY				01.JUL02		
APVD4						
APVD5						
SUBSTANCES OF CONCERN AND RECYCLED CONTENT PER DELPHI 10949001						
MATERIAL M3596003 PA66 HS 1M GRA MD						
DRAWING NAME LOCK TPA M/P 280 GRA MD						
DRAWING NUMBER 12020807						
SIZE A0	SCALE 5:1	FRAME NO 1 OF 2	SHEET NO 1 OF 1	STG R	REV 05	N/P AD

Mouser Electronics

Authorized Distributor

Click to View Pricing, Inventory, Delivery & Lifecycle Information:

[Aptiv:](#)

[12020807](#) [12020807-B](#)