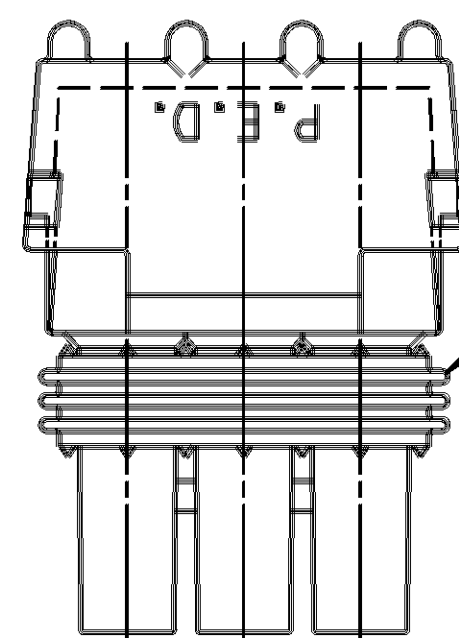


THIS DRAWING AND DESIGN HEREON CON-
STITUTES A PROPRIETARY DESIGN OF
PACKARD ELECTRIC DIVISION AND IS NOT
TO BE DUPLICATED OR REPRODUCED WITH-
OUT AUTHORITY OF PACKARD ELECTRIC
DIVISION.

DO NOT SCALE



-SEALING RIBS MUST BE
FREE OF DEFECTS.

-12010718-SEAL

- CONN. BODY - SEE CHART

- FLEX AREA MAY EXHIBIT MATERIAL SEPARATION AFTER FINAL ASSEMBLY.

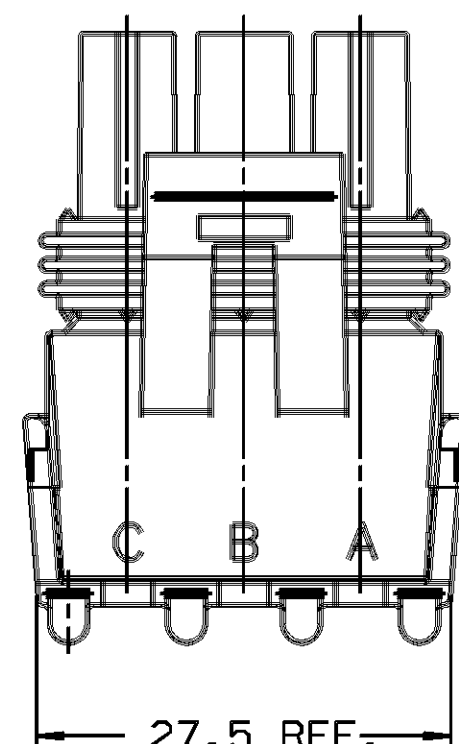
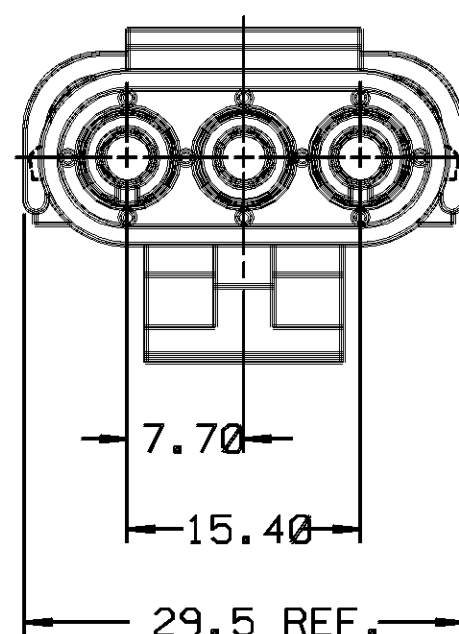
—TERMINAL LOCK TO BE FOLDED
DOWN AS SHOWN AFTER
TERMINALS HAVE BEEN
INSERTED.

6.15 DIA. -3 PLCS.

INDEX CODE

- 101 -

(ALSO SEE HANDBOOK)



22.5
RFF.

20.8
REF.

1.5 MAX. GAP
ALLOWABLE

- 40.5 REF.-

└─ ASM. DIMENSIONING POINT

NOTES

1. UNLESS OTHERWISE SPECIFIED AND/OR INDICATED:

DIMENSIONS ARE TO FACE OF VIEW SHOWN AND AUTOMATICALLY ROUNDED BY COMPUTER FOR INSPECTION (SEE MATH MODEL FOR PRECISE DIMENSIONS). FOR ALL OTHER DIMENSIONS NOT SHOWN BUT REQUIRED FOR TOOL BUILD, SEE MATH MODEL FOR PRECISE TOOL PATH DATA.

2. USE FEMALE TERMINAL 12089188 OR EQUIVALENT FOR "IN-LINE" APPLICATIONS. USE MALE TERMINAL 12089040 OR EQUIVALENT FOR "PANEL MOUNT" APPLICATIONS.

3. USE CABLE SEAL 12015323 OR EQUIVALENT.

4. MATING CONNECTOR - SEE CHART.

5. WHEN PARTS ARE SHIPPED THEY MUST BE PACKED IN PLASTIC BAGS OR SHIPPING CONTAINERS MUST BE LINED WITH PLASTIC LINERS. BAGS OR LINERS MUST BE SEALED TO AVOID FOREIGN MATTER.

6. SEALING CODE 3 - DESIGN WILL PASS SALT FOG AND IMMERSION TEST AFTER CONDITIONING AS SPECIFIED IN ESA-644 (WEATHER-PACK), ESA-710 (METRI-PACK), ESA-650 (UNDERHOOD MICRO-PACK), C-4006 (WORLD CONNECTOR), ETC WHEN MATED TO MATING PART OR EQUIVALENT

7. THIS PRODUCT IS NOT CATEGORIZED AS AN APPEARANCE ITEM. MINOR IMPERFECTIONS INCLUDING, BUT NOT LIMITED TO, FLOW MARKS, COLOR BLEMISHES, GATE VESTIGE, AND SOFT FLASH THAT DO NOT AFFECT THE FIT, FORM, OR FUNCTION OF THE PART ARE PERMISSIBLE PER DPNP-4.7-CS-01.


8. WHEN DESIGNING A PART TO MATE TO THIS WEATHER PACK CONNECTOR, REQUEST THE LATEST COPY OF DRAWING NUMBER 12020084 FROM THE PACKARD ELECTRIC DIVISION.

12040691	A1	OBSOLETE	12040686	ASM CONN 3F	W/P TWR	SIR IN-LINE	12089188-FEMALE	
12020737	A	—	12020731	ASM CONN 3M	W/P TWR	DEVICE	12089040-MALE	DEVICE
12015800	A	—	12015790	ASM CONN 3F	W/P TWR	IN-LINE	12089188-FEMALE	12015460
12015793	A	—	12015783	ASM CONN 3F	W/P TWR	IN-LINE	12089188-FEMALE	12010717
12015610	A	OBSOLETE	12015459	ASM CONN 3M	W/P TWR	DEVICE	12089040-MALE	DEVICE
12015382	A	OBSOLETE	12010716	ASM CONN 3M	W/P TWR	DEVICE	12089040-MALE	DEVICE
PART NUMBER	REV	STATUS	CONNECTOR BODY	STANDARD DESCRIPTION		APPLICATION	REFERENCE TERMINAL/GENDER	MATING CONN.

[illegible]

PART NO.

1210 3348

PED / INTERGRAPH MICROSTATION		FILE SPEC: ***** DGN#SPECIFICATION***** *****SYTIME*****	
THIRD ANGLE PROJECTION 		METRIC DIMENSIONS ARE IN MILLIMETERS UNLESS OTHERWISE SPECIFIED.	
CODE NO. 6900		TOLERANCE UNLESS OTHERWISE SPECIFIED DECIMAL:	
Q.C. -C-5110		ONE PLACE ± 0.3 TWO PLACE ± 0.15	
DWG. DATE 07FE90		SCALE 2:1 DR. J.COLDSNOW 07FE90	
EST. NO.		CK. J.COLDSNOW	
REFERENCE NO.		DATE 07FE90	
MATERIAL SPEC.		APPR. A.R.HERMANN	
SEE DRAWING		DATE	
NAME TAXI ASM CONN 3 W/P TWR			
PART NO. 1210 3348			SIZE C

PACKARD ELECTRIC

Mouser Electronics

Authorized Distributor

Click to View Pricing, Inventory, Delivery & Lifecycle Information:

[Aptiv:](#)

[12020737](#)