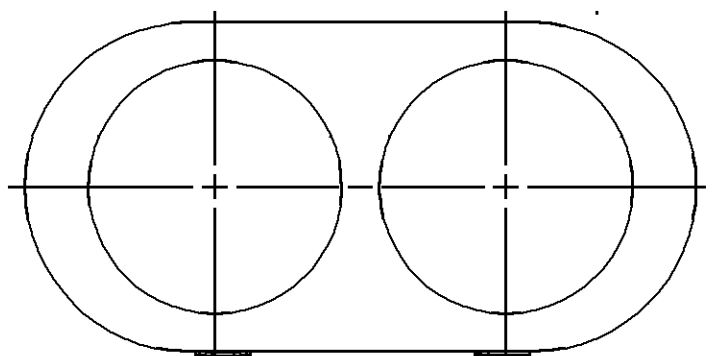
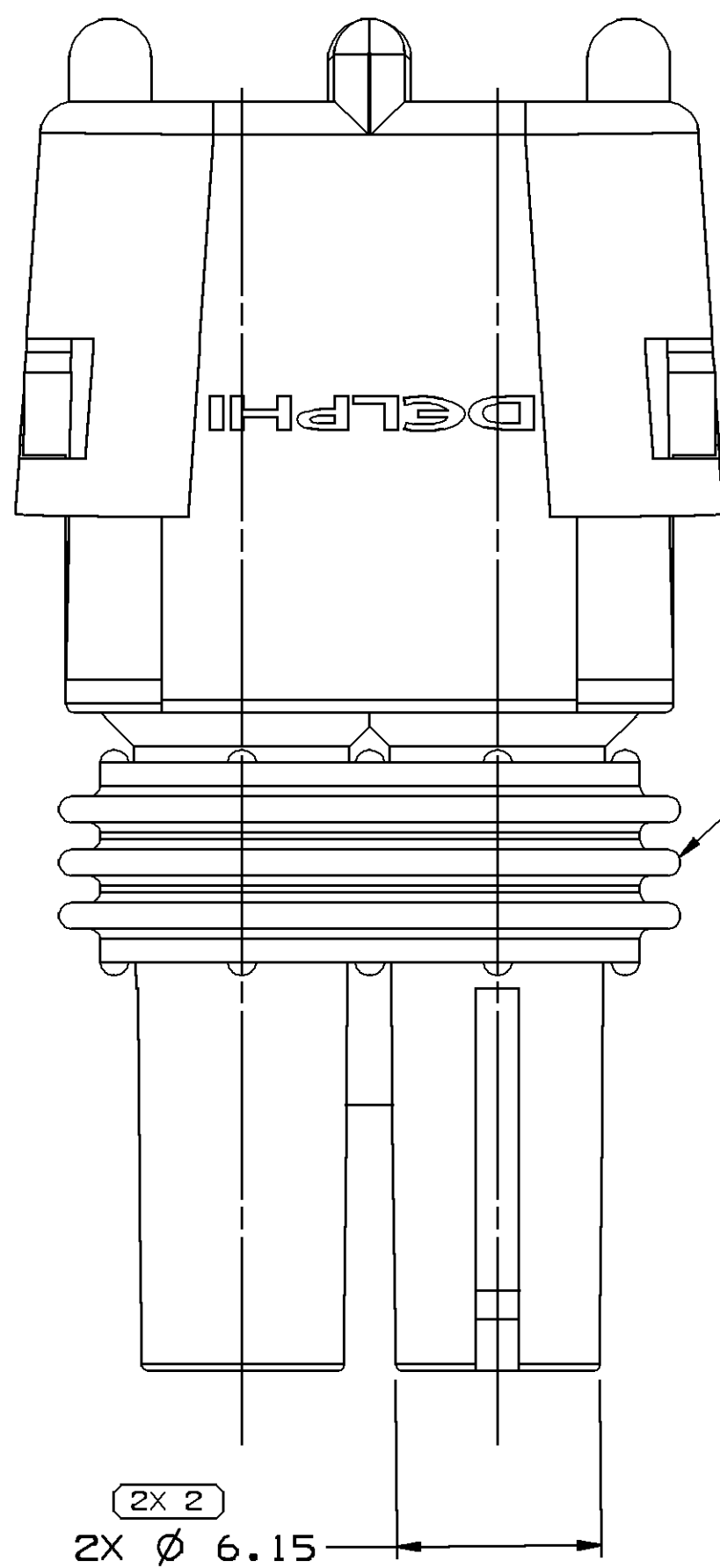
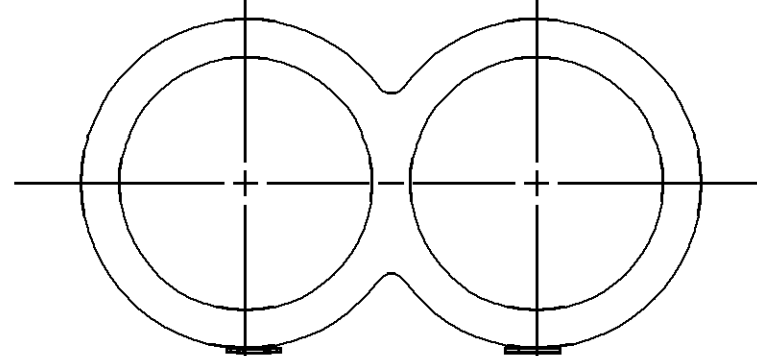


| SYMBOL DEFINITION | | MISSING SYMBOLS | |
|--|--|----------------------------------|----|
| A DIMENSION WITHOUT AN INSPECTION REPORT SYMBOL DOES NOT REQUIRE INSPECTION. IT MAY BE CONTROLLED ON THE INDIVIDUAL COMPONENT DRAWING. | | TOTAL NO OF INSPECTIONS REQUIRED | 11 |
| | | LAST NO. USED | 10 |

| DWS STATUS | | | | REVISION HISTORY | | AUTH | DR | AP/D | AP/D |
|------------|-----|-----|-----|------------------|------|---|--------|------|---------|
| DATE | STG | REV | N/P | CHG | ZONE | | | | |
| 21N005 | R | 01 | - | - | | CLEARED REV COLUMN: ALL PARTS - REDRAWN TO PD | 274555 | OPS | FRG EST |
| 08MY07 | R | 02 | - | - | | ALL PARTS - REVISED NOTE #5 & MODEL ASM UPDATED | 401351 | JS | JS WTM |

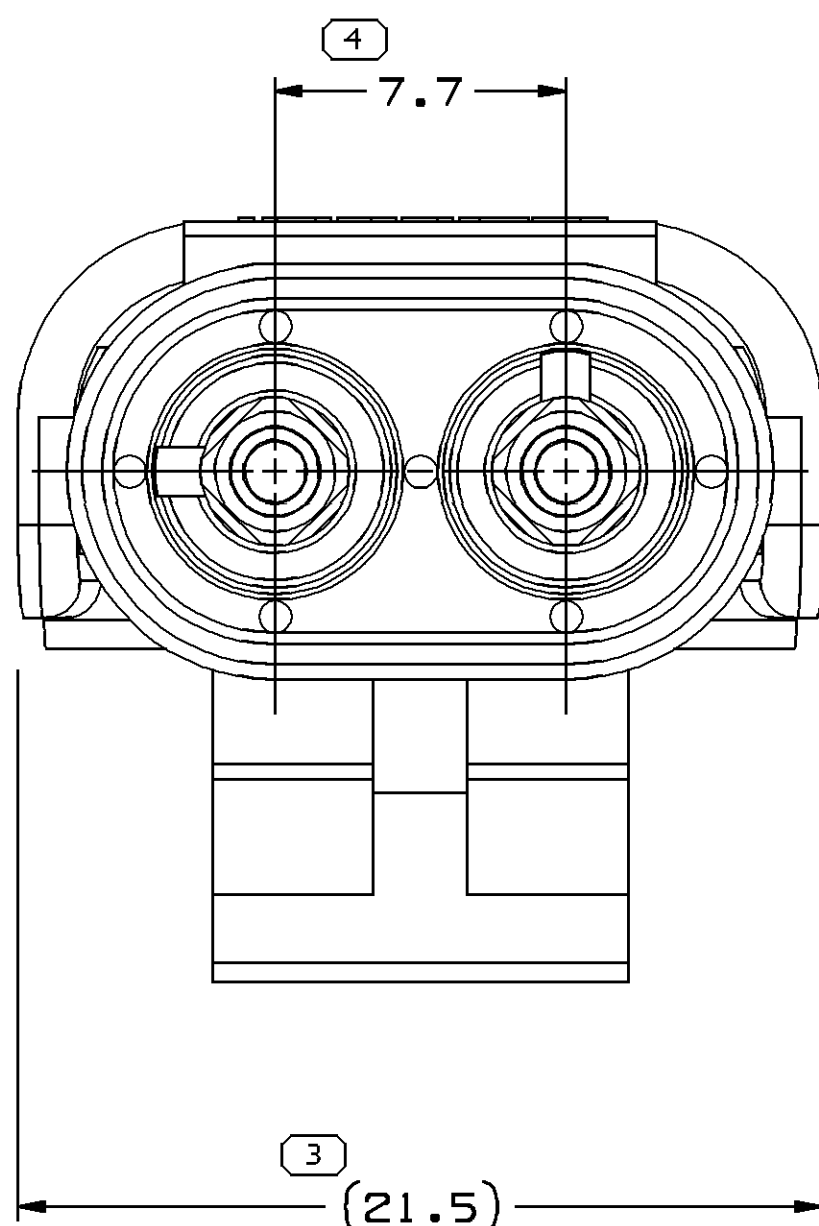
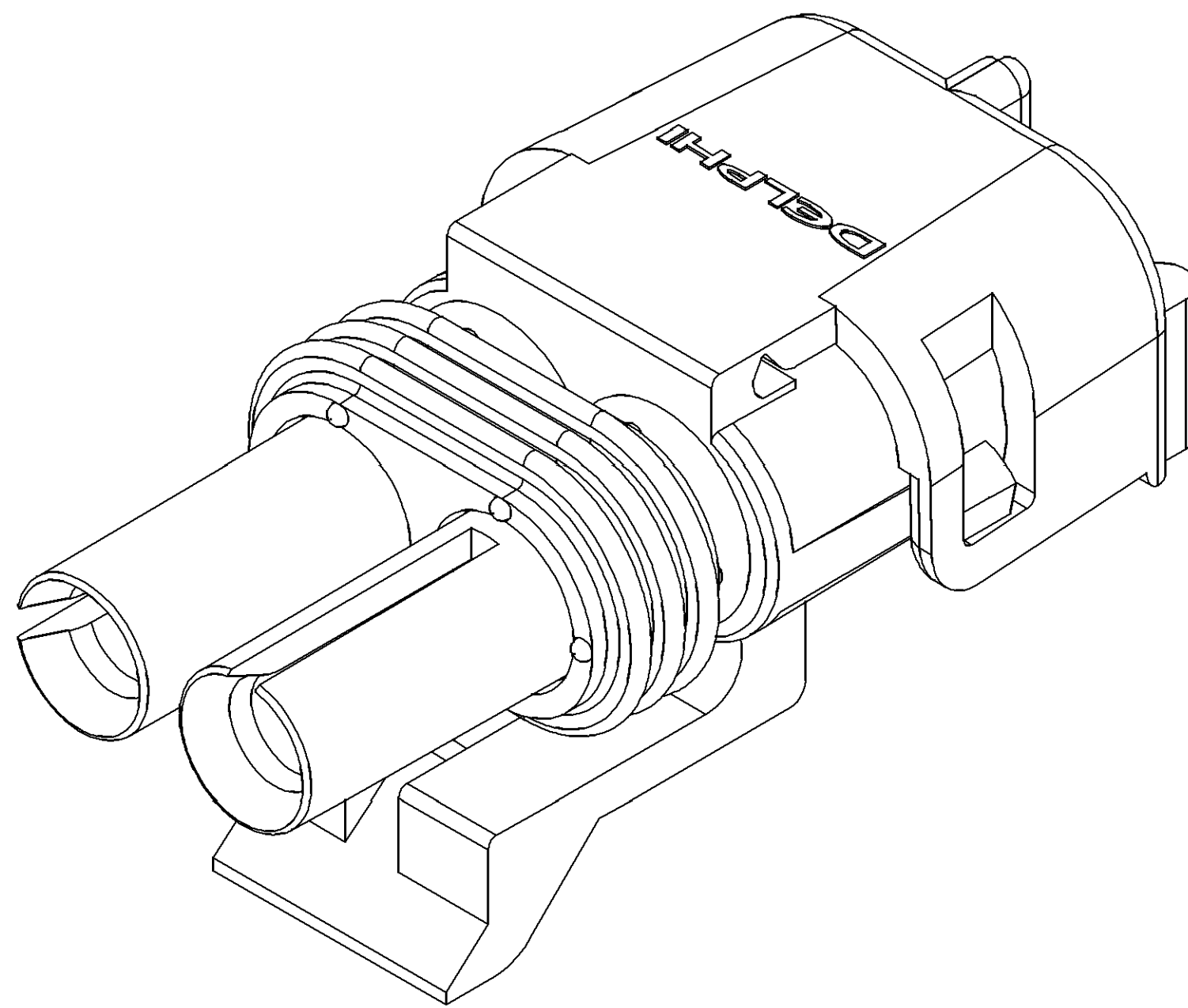


STANDARD
CONSTRUCTION

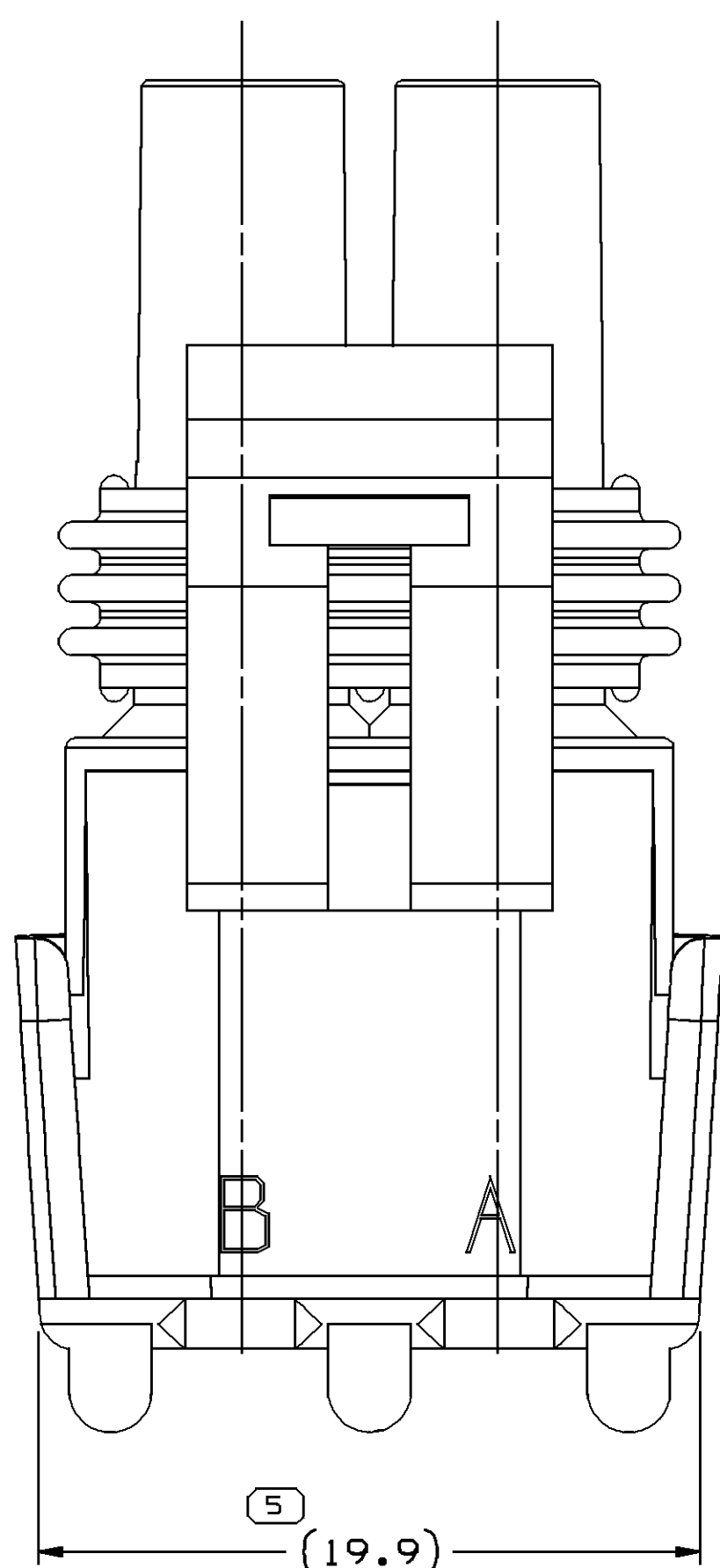
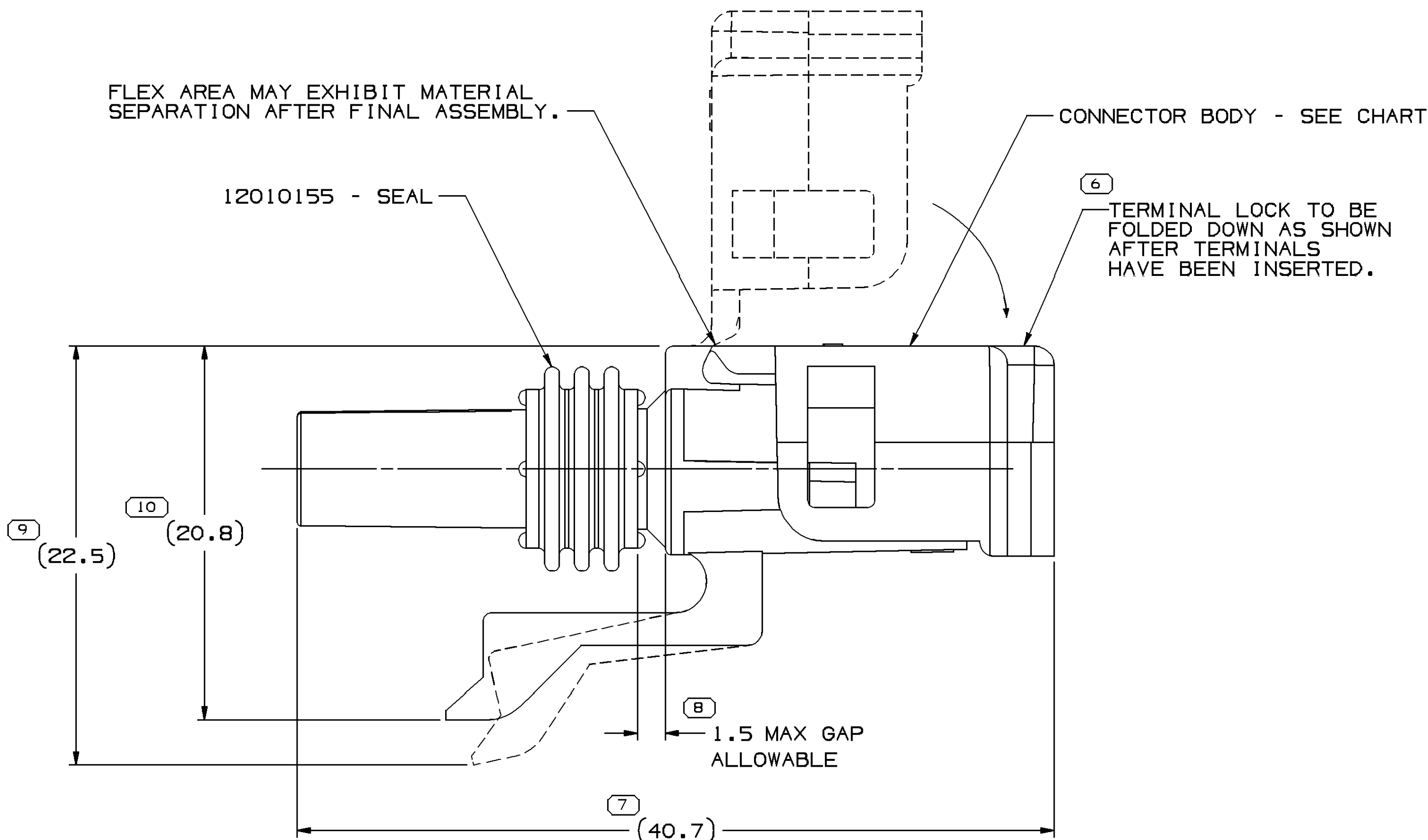


OPTIONAL
CONSTRUCTION

CABLE END VIEW OF CONNECTOR BODY



INDEX CODE
- 32 -
(ALSO SEE HANDBOOK)



NOTES

- UNLESS OTHERWISE SPECIFIED AND/OR INDICATED:
DIMENSIONS ARE TO FACE OF VIEW SHOWN AND AUTOMATICALLY ROUNDED BY COMPUTER FOR INSPECTION (SEE MATH MODEL FOR PRECISE DIMENSIONS). FOR ALL OTHER DIMENSIONS NOT SHOWN BUT REQUIRED FOR TOOL BUILD, SEE MATH MODEL FOR PRECISE TOOL PATH DATA.
- REFERENCE MATING COMPONENTS OR EQUIVALENT:
MATING CONNECTOR - SEE CHART
- THIS PART ACCEPTS THE FOLLOWING COMPONENTS OR EQUIVALENT:
FEMALE TERMINAL 12089188 FOR IN-LINE APPLICATIONS
MALE TERMINAL 12089040 FOR PANEL MOUNT APPLICATIONS
CABLE SEAL 12015323
- WHEN PARTS ARE SHIPPED THEY MUST BE PACKED IN PLASTIC BAGS OR SHIPPING CONTAINERS MUST BE LINED WITH PLASTIC LINERS. BAGS OR LINERS MUST BE SEALED TO AVOID FOREIGN MATTER.
- SEALING CODE 3 - DESIGN WILL PASS SALT FOG AND IMMERSION TEST AFTER CONDITIONING AS SPECIFIED IN ESA-644 (WEATHER-PACK). WHEN MATED TO MATING PART OR EQUIVALENT
- WHEN DESIGNING A PART TO MATE TO THIS WEATHER PACK CONNECTOR, REQUEST THE LAST COPY OF DRAWING NUMBER 12020084 FROM THE PACKARD ELECTRIC DIVISION.

| 12103784 | A3 | - | - | 12103782 | ASM CONN 2F W/P TWR | IN-LINE | 12089188/FEMALE | 12034074 |
|------------------|-----|-----|--------|----------------|----------------------|-------------|---------------------|-------------|
| 12015378 | A3 | - | - | 12010810 | ASM CONN 2M W/P TWR | DEVICE | 12089040/MALE | DEVICE |
| ASSEMBLY PART NO | REV | N/P | STATUS | CONNECTOR BODY | STANDARD DESCRIPTION | APPLICATION | REF TERMINAL/GENDER | MATING PART |

| DIMENSIONAL RANGE (MM) | | CHART | |
|--------------------------------------|-----|-----------------------|-----|
| FROM | TO | > | < |
| 0 | 20 | 30 | 100 |
| 20 | 30 | 70 | 150 |
| 30 | 70 | 100 | 150 |
| 70 | 100 | 150 | 200 |
| 100 | 150 | 200 | 250 |
| 150 | 200 | 250 | 300 |
| 200 | 250 | 300 | 400 |
| 250 | 300 | 400 | |
| 300 | 400 | | |
| 400 | | | |
| TOLERANCE UNLESS OTHERWISE SPECIFIED | | ANGULAR TOLERANCE 22° | |
| ±0.15 | | ±1.2 | |
| ±0.2 | | ±1.2 | |
| ±0.3 | | ±1.2 | |
| ±0.4 | | ±1.2 | |
| ±0.5 | | ±1.2 | |
| ±0.6 | | ±1.2 | |
| ±0.8 | | ±1.2 | |
| ±1 | | ±1.2 | |
| ±1.2 | | ±1.2 | |

| DWS TYPE | | PART DRAWING | |
|-----------------------------------|--|--|--|
| STYLE | | D | |
| VOLUME 10/1 | | DISTR CODE | |
| UNLESS OTHERWISE SPECIFIED | | THIS DOCUMENT IS IN ACCORDANCE WITH ISO 11454-1:1994 AS ISSUED BY THE ISO STANDARDS COMMITTEE. NO TOLERANCE ADDITION SHALL BE MADE SEPARATELY REBOLDED BY DAYTON REFERENCES. | |
| ALL DIMENSIONS ARE IN MILLIMETERS | | REFERENCE | |
| THIRD ANGLE PROJECTION | | DO NOT SCALE | |
| USE MATH DATA | | NX | |

| DELPHI | |
|--|-----------------|
| DELPHI PACKARD ELECTRICAL/ELECTRONIC ARCHITECTURE | |
| W/REN, DR | |
| DR | DATE |
| AP/D1 GERALD CHAPMAN | 21N090 |
| AP/D2 GERALD CHAPMAN | 21N090 |
| AP/D3 ALEX HERMANN | 21N090 |
| AP/D4 | |
| AP/D5 | |
| SUBSTANCES OF CONCERN AND RECYCLED CONTENT PER DELPHI 10949001 | |
| MATERIAL SEE DRAWING | |
| DRAWING NAME | |
| TAXI ASM CONN W/P TWR SLD | |
| DRAWING NUMBER | |
| 12103785 | |
| SIZE A0 | SCALE 5:1 |
| FRAME NO 1 | SHEET NO 1 OF 1 |
| STG REV N/P | R 02 |

Mouser Electronics

Authorized Distributor

Click to View Pricing, Inventory, Delivery & Lifecycle Information:

[Aptiv:](#)

[12015378](#) [12015378-B](#)