
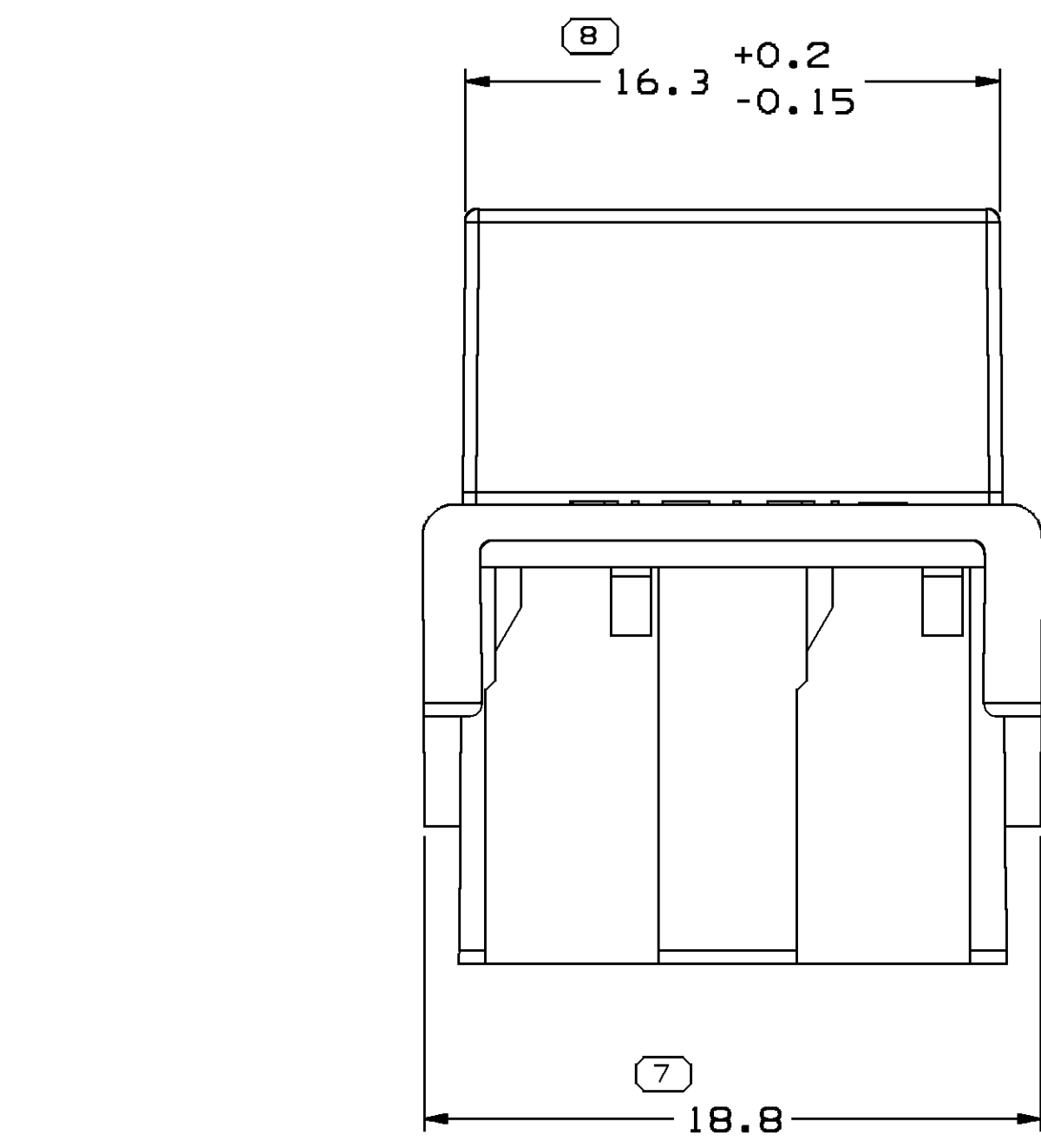
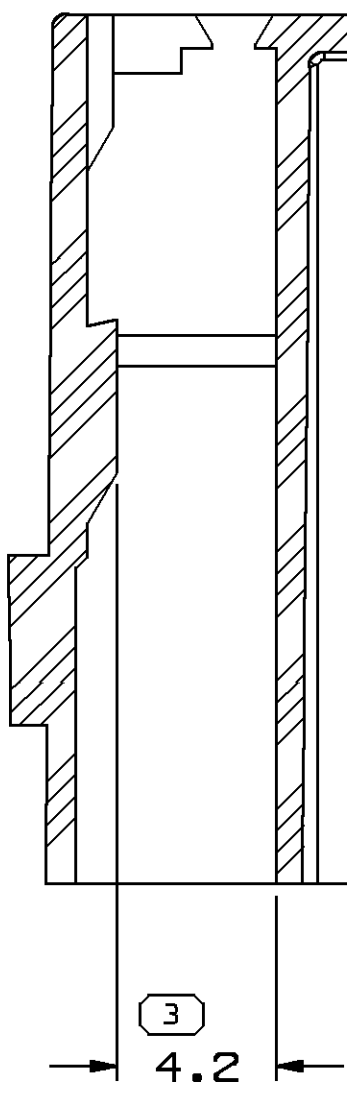
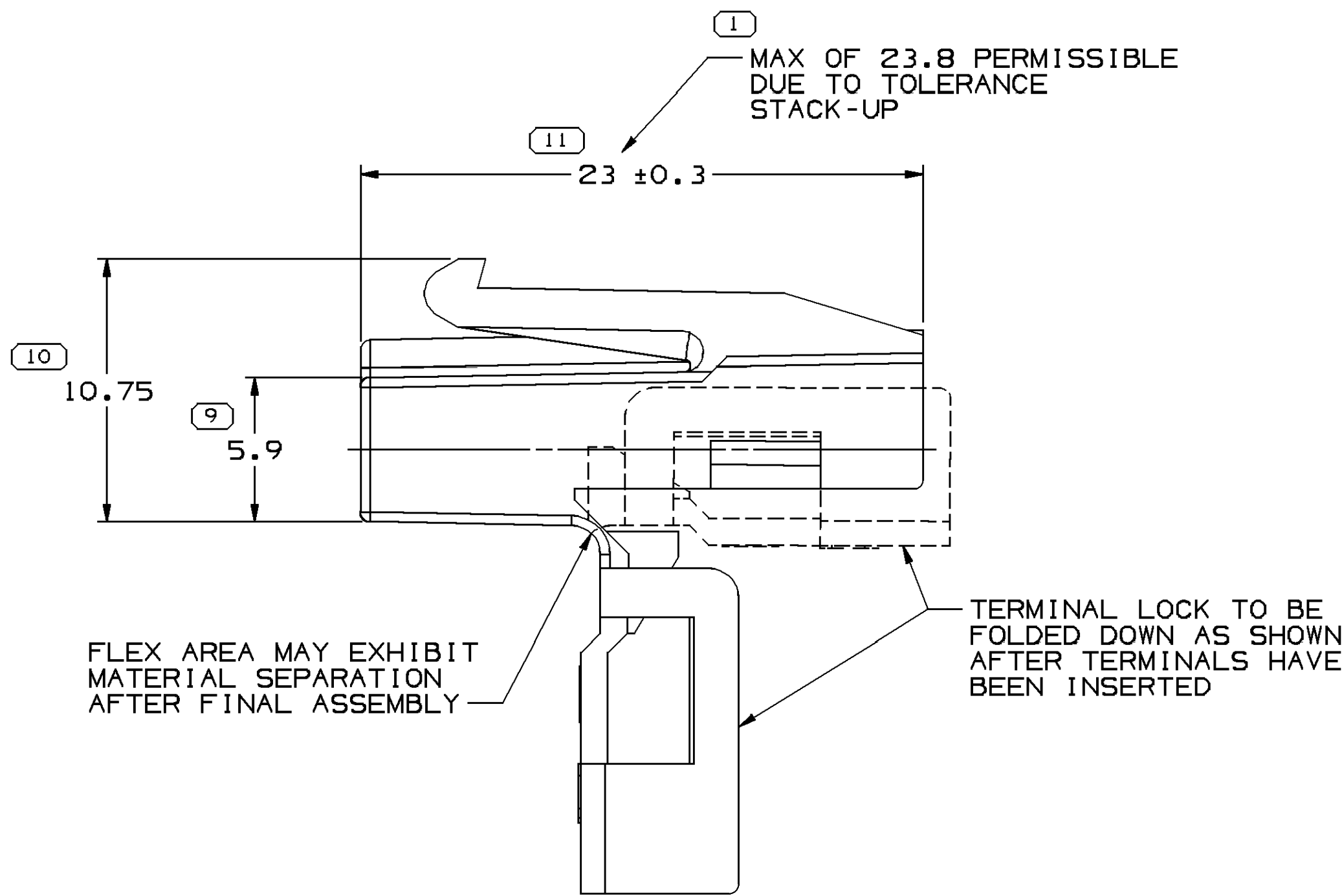
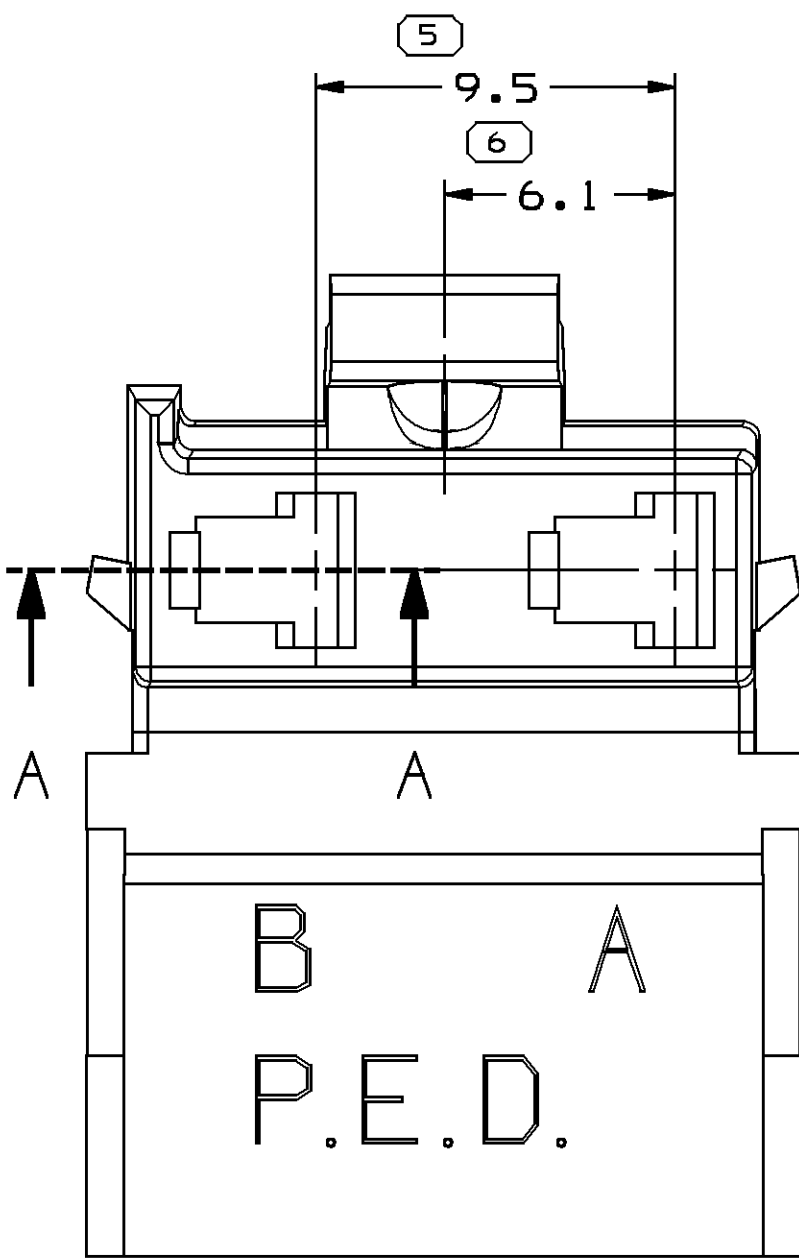
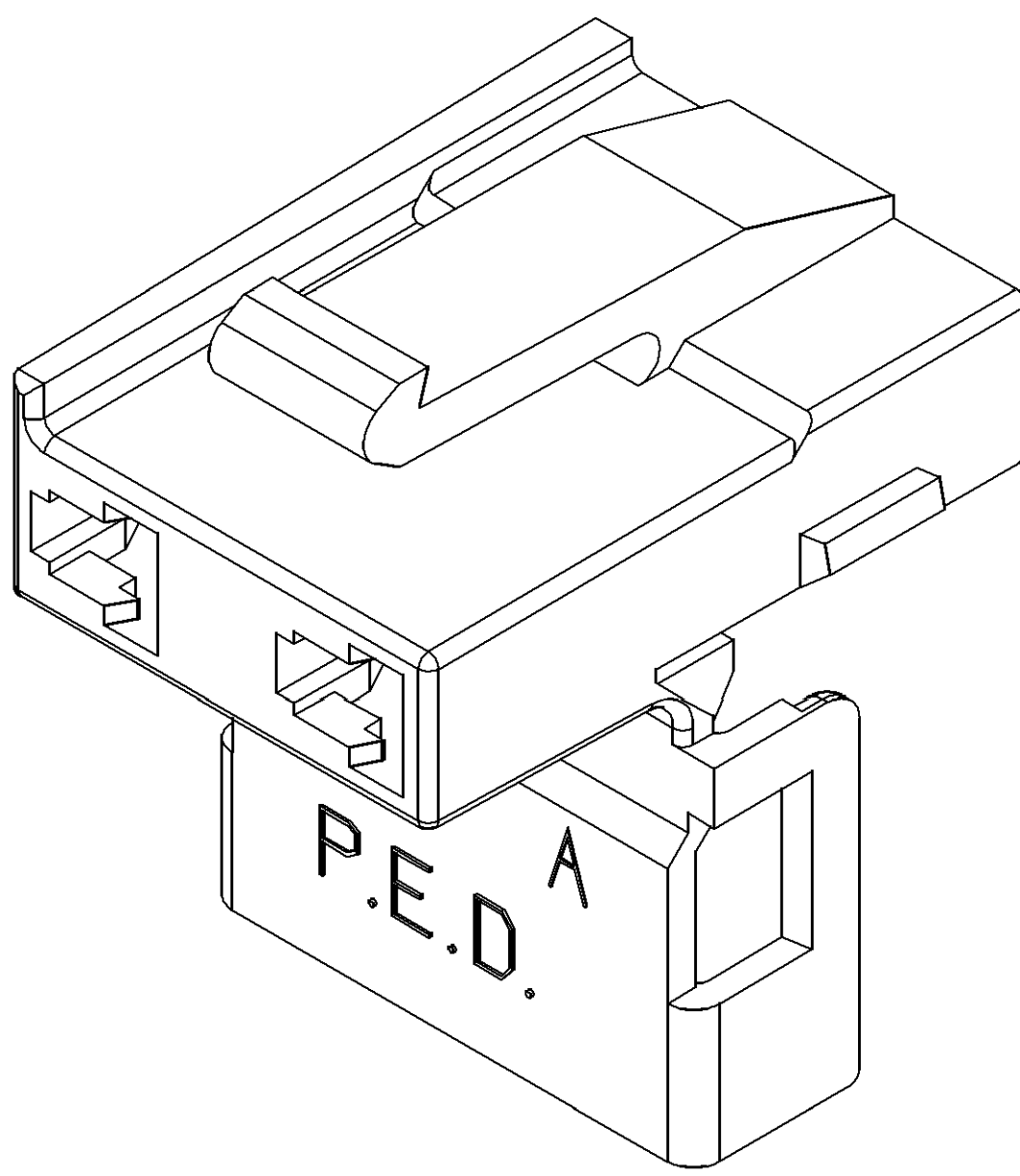
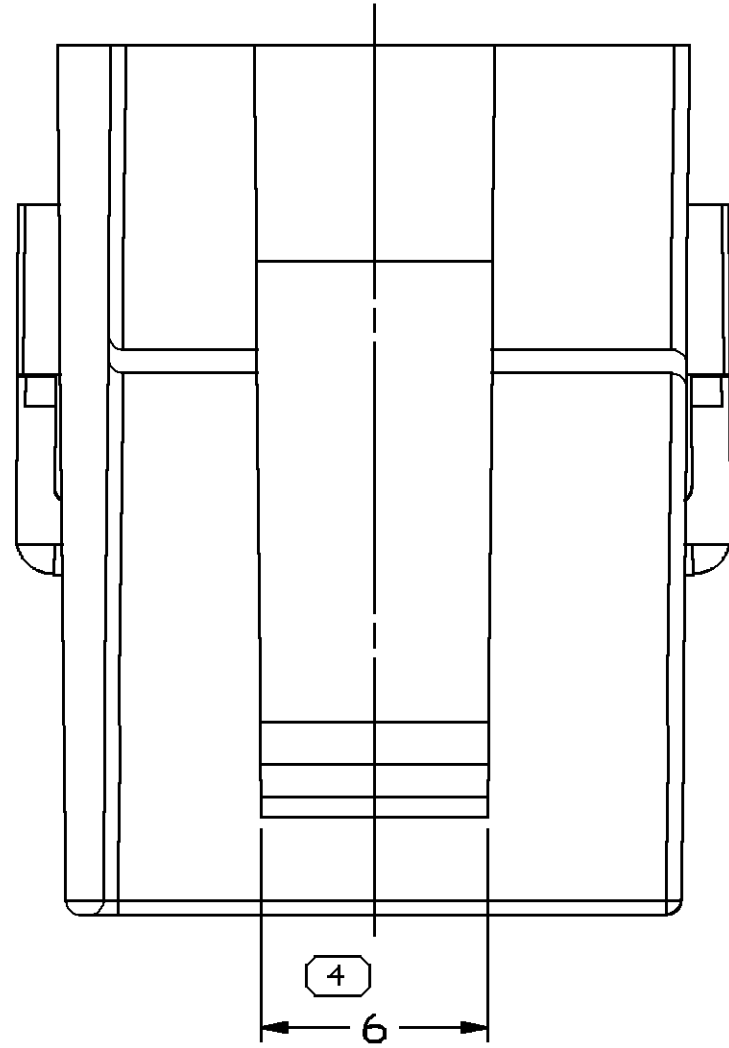


| SYMBOL DEFINITION | | |
|--|----------------------------------|----|
| A DIMENSION WITHOUT AN INSPECTION REPORT SYMBOL  DOES NOT REQUIRE INSPECTION. IT MAY BE CONTROLLED ON THE INDIVIDUAL COMPONENT DRAWING. | TOTAL NO OF INSPECTIONS REQUIRED | 11 |
| | LAST NO. USED | 11 |

| MISSING SYMBOLS | | | | | DWG STATUS | | ZONE | REVISION HISTORY | | | AUTH | DR | APD | APD/2 |
|--------------------------|--|--|--|--|------------|-----|------|------------------|-----|--|--------|-----|-----|-------|
| NO MISSING SYMBOL NUMBER | | | | | DATE | STG | | REV | N/P | CHG | | | | |
| | | | | | 24FE99 | R | 01 | - | - | ALL PARTS - REDRAWN TO PD; OBSOLETE PARTS REMAIN OBSOLETE | 980007 | HGH | GMC | 08 |
| | | | | | 24FE99 | R | 02 | - | - | ALL PARTS - ADDED NOTE; OBSOLETE PARTS REMAIN OBSOLETE | 191577 | HGH | GMC | 08 |
| | | | | | 24FE99 | R | 03 | - | - | ALL PARTS - UPDATED PDM ATTRIBUTES | 191599 | GMC | GMC | 08 |
| | | | | | 20AU99 | R | 04 | - | - | 12015199 - UPDATED PDM ATTRIBUTES | 191265 | EVV | FKV | JM |
| | | | | | 18DE01 | R | 05 | - | - | ALL ACTIVE PARTS - ADDED NOTES (2 PLCS), REVISED MAT'L SPEC & LOGO | 215879 | EGR | EAR | RC |
| | | | | | 16MY03 | R | 06 | - | - | ALL ACTIVE PARTS - ADDED NOTE | 241169 | RH | RH | RC |
| | | | | | 10AU04 | R | 07 | - | - | UPDATED 280 METRI-PACK CAVITY | 257885 | MJM | MJM | MR |
| | | | | | 04AP05 | R | 08 | - | - | ALL ACTIVE PARTS - 23 00.3 WAS 23, 16.3 +0.2/-0.15 WAS 16.3 | 265326 | RH | RH | MR |
| | | | | | 02MR06 | R | 09 | - | - | 12015199 - MAT'L SPEC WAS M3592002 | 278049 | BLB | JVM | B61 |
| | | | | | 12AU11 | R | 10 | - | - | ALL ACTIVE PARTS - ADDED APPLICATION DATA NOTE | 415019 | AJP | JVM | BEM |



- NOTES
- UNLESS OTHERWISE SPECIFIED AND/OR INDICATED:
DIMENSIONS ARE TO FACE OF VIEW SHOWN AND AUTOMATICALLY ROUNDED BY COMPUTER FOR INSPECTION (SEE MATH MODEL FOR PRECISE DIMENSIONS). FOR ALL OTHER DIMENSIONS NOT SHOWN BUT REQUIRED FOR TOOL BUILD, SEE MATH MODEL FOR PRECISE TOOL PATH DATA.
 - MATERIAL RECYCLING CODE PER ISO 11469, (2.3)X(0.1) CHARACTERS AS SHOWN TO BE LOCATED ON ANY EXTERIOR SURFACE.
 - THIS PRODUCT IS NOT CATEGORIZED AS AN APPEARANCE ITEM, MINOR IMPERFECTIONS INCLUDING, BUT NOT LIMITED TO, FLOW MARKS, COLOR BLEMISHES, GATE VESTIGE, AND SOFT FLASH THAT DO NOT AFFECT THE FIT, FORM, OR FUNCTION OF THE PART ARE PERMISSIBLE PER DPNP-4.7-CS-01.
 - (2.3)X(0.1) DELPHI CORPORATE BRAND TO BE LOCATED ON ANY EXTERIOR SURFACE, PREFERABLY VISIBLE AT FINAL ASSEMBLY. OPTIONAL CONSTRUCTION FOR EXISTING TOOLING MAY BE "PED".
 - FOR APPLICATION DATA SEE THE INDIVIDUAL APPLICATION DRAWINGS.

| 12048273 | H3 | - | OBSOLETE | POLYAMIDE COMPOUND GRAY | 1.720 |
|----------|-----|-----|----------|----------------------------------|---------|
| 12034343 | 10 | AC | | POLYAMIDE COMPOUND BLACK | 1.679 |
| 12034009 | 10 | AC | | POLYAMIDE COMPOUND GRAY | 1.679 |
| 12015199 | 11 | AA | | POLYAMIDE COMPOUND CREAM | 1.679 |
| PART NO | REV | N/P | STATUS | MATERIAL SPECIFICATION AND COLOR | VOL CM³ |

| DIMENSIONAL RANGE (MM) | | TOLERANCE | |
|------------------------|-----|-----------|------|
| FROM | TO | ± | ± |
| 0 | 20 | ±0.2 | ±0.3 |
| 20 | 30 | ±0.3 | ±0.4 |
| 30 | 50 | ±0.4 | ±0.5 |
| 50 | 100 | ±0.5 | ±0.6 |
| 100 | 150 | ±0.6 | ±0.8 |
| 150 | 200 | ±0.8 | ±1.0 |
| 200 | 250 | ±1.0 | ±1.2 |
| 250 | 300 | ±1.2 | ±1.5 |
| 300 | 400 | ±1.5 | ±2.0 |

| THIRD ANGLE PROJECTION | |
|------------------------|---------------|
| USE MATH DATA | USE MATH DATA |

DELPHI

DELPHI PACKARD ELECTRICAL/ELECTRONIC ARCHITECTURE
WARREN, OH

DATE: _____

APV01 H. GAMA 16DE9B
APV02 G. MACIAS 16DE9B
APV03 O. GALLEGOS 18DE9B
APV04 _____
APV05 _____

SUBSTANCES OF CONCERN AND RECYCLED CONTENT PER DELPHI (0944930)

MATERIAL SEE CHART

DRAWING NAME
TAXI CONN F W/P 280

DRAWING NUMBER
12034008

SIZE A0 SCALE 5:1 FRAME NO 1 OF 1 SHEET NO 1 OF 1 STG REV N/P 1 10 -

Mouser Electronics

Authorized Distributor

Click to View Pricing, Inventory, Delivery & Lifecycle Information:

[Aptiv:](#)

[12015199](#) [12015199-B](#)