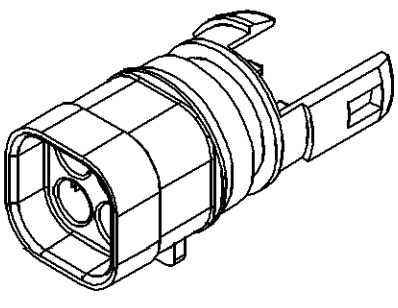
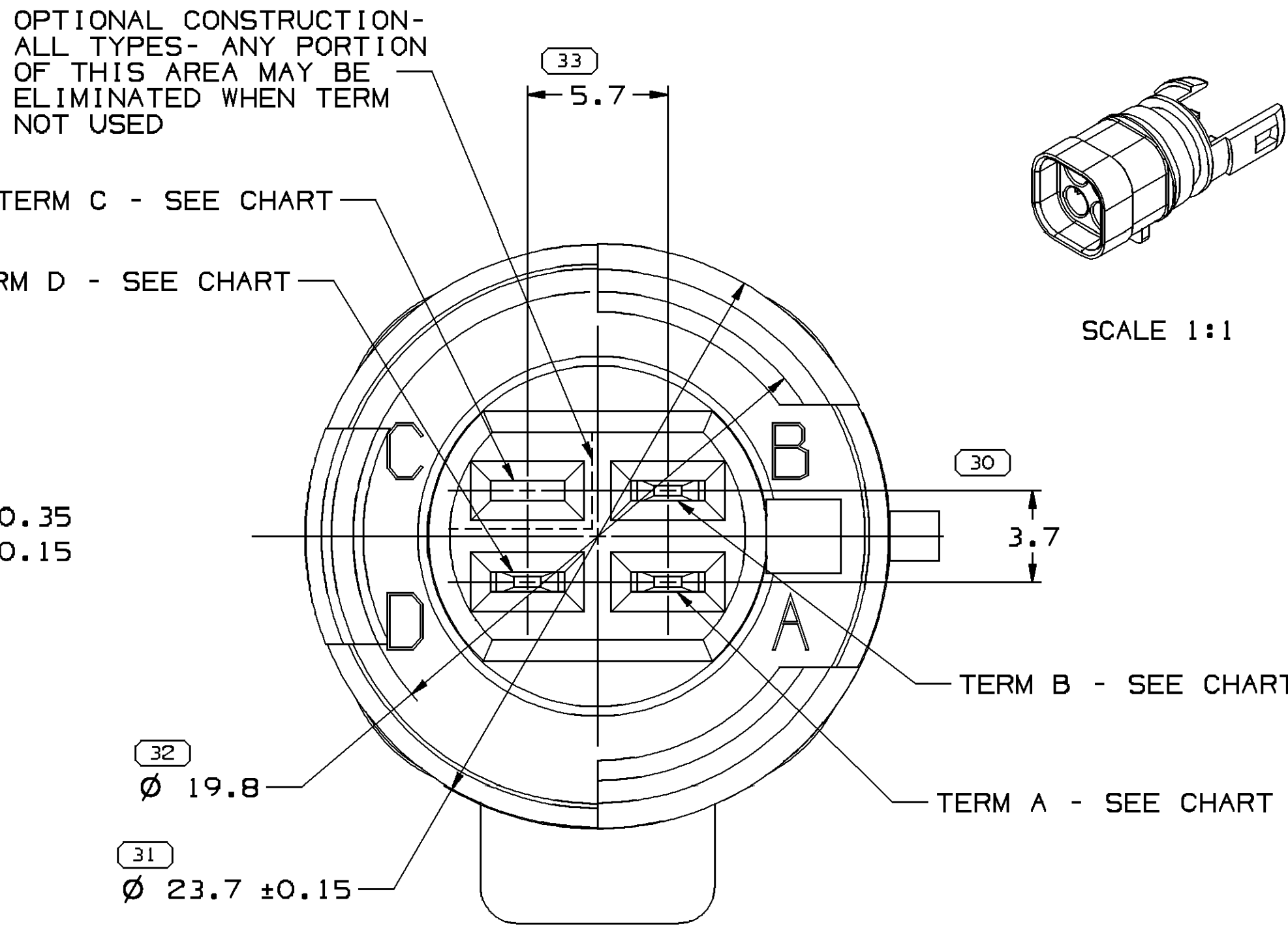
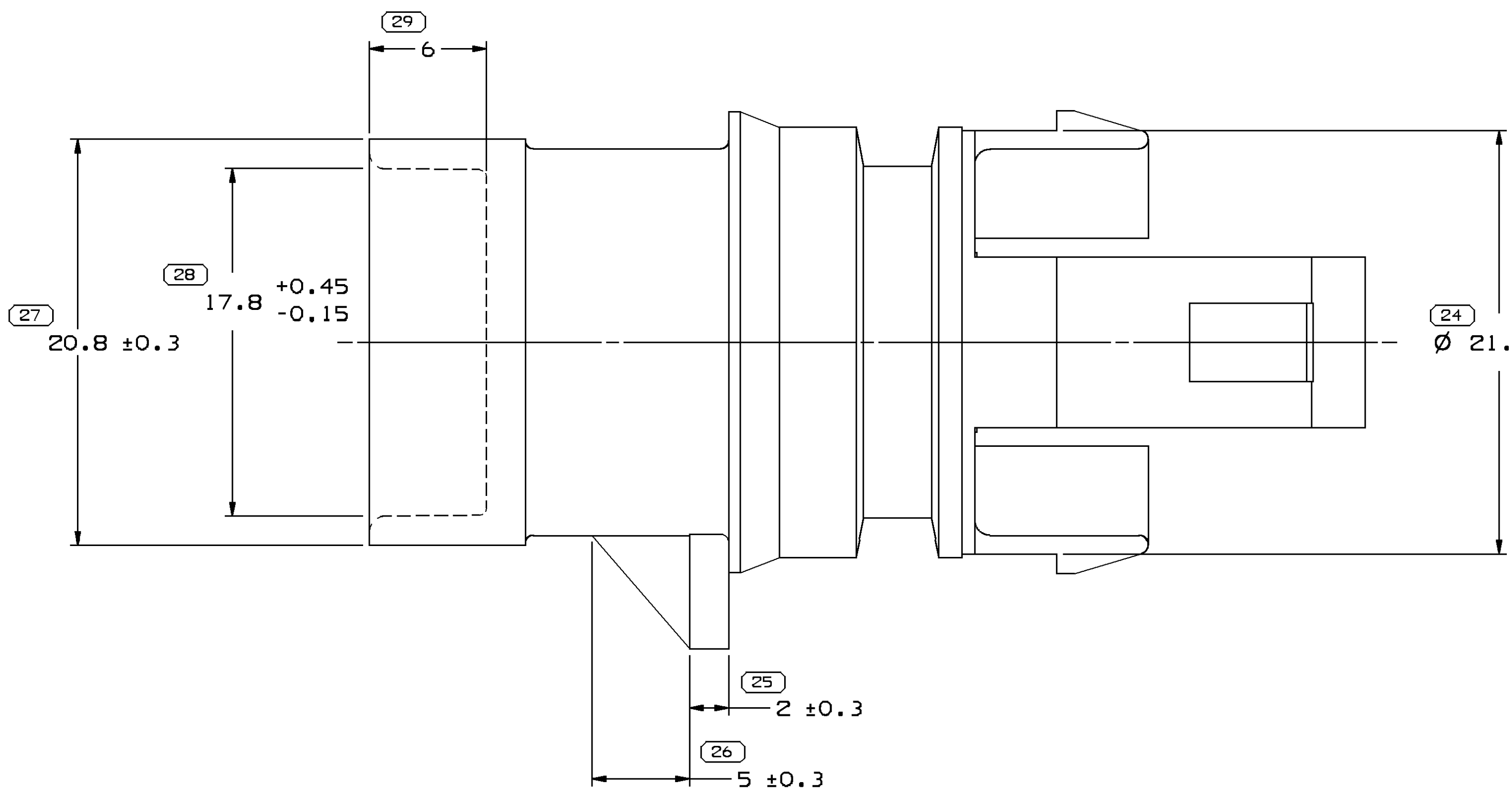
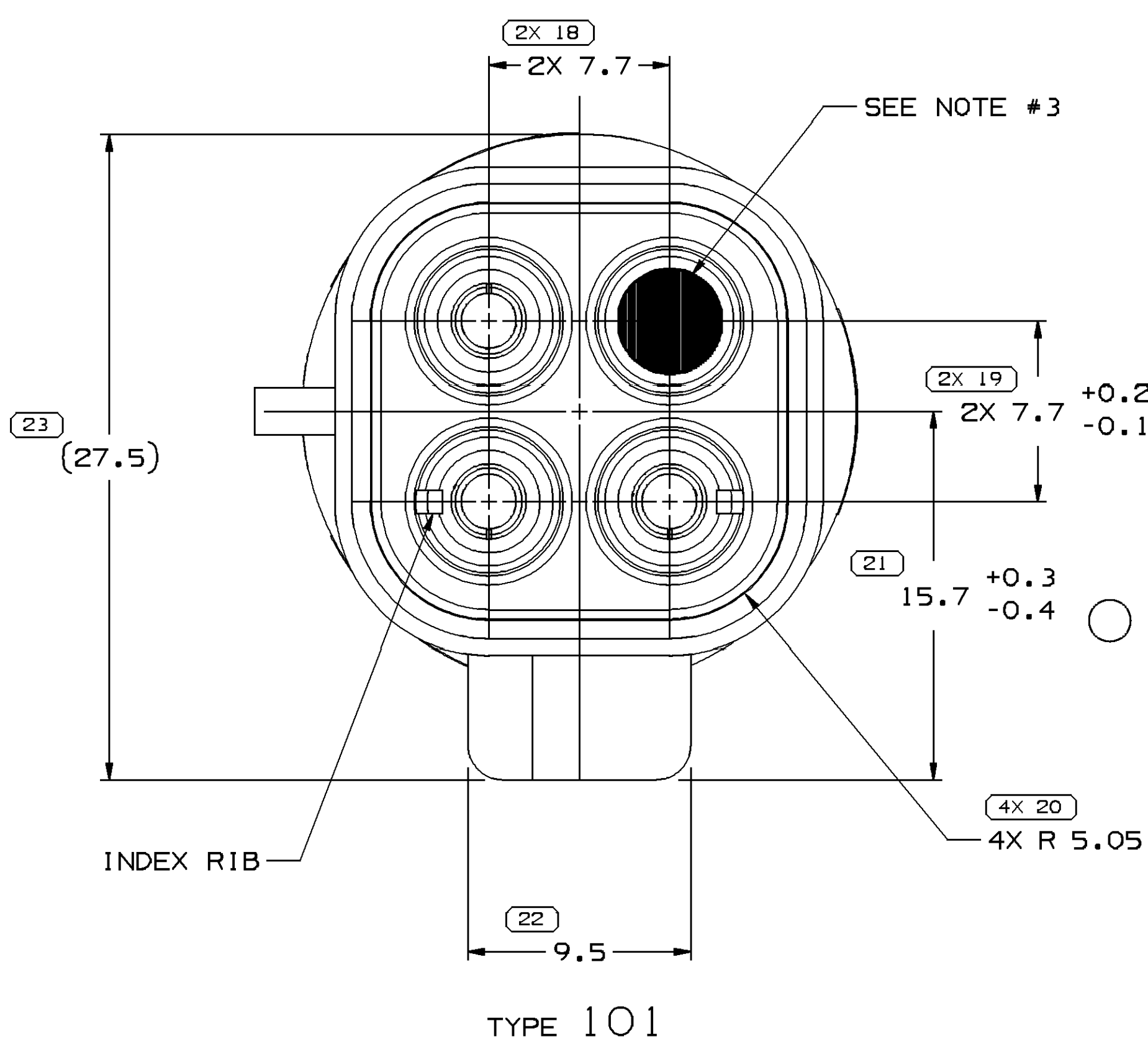


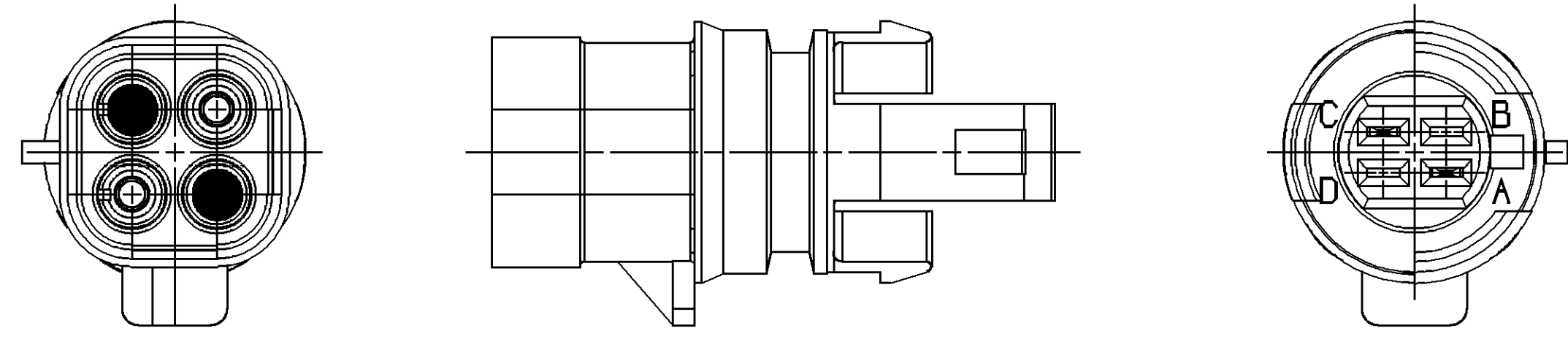
SYMBOL DEFINITION		MISSING SYMBOLS	
A DIMENSION WITHOUT AN INSPECTION REPORT SYMBOL □ DOES NOT REQUIRE INSPECTION. IT MAY BE CONTROLLED ON THE INDIVIDUAL COMPONENT DRAWING.	TOTAL NO OF INSPECTIONS REQUIRED	42	
	LAST NO. USED	37	

CWS STATUS		ZONE		REVISION HISTORY		AUTH		DR		AP/VD/AP/VD	
DATE	STG	REV	N/P	CHG							
06AU08	R	01	-	-	ALL ACTIVE PARTS - WERE SEPARATED DWG & DIM 20.8+/-0.3 WAS 20.8+/-0.15	405398	SCR	SCR	D&L		
24JL09	R	02	-	-	ALL ACTIVE PARTS - DIM 17.8 +0.4/-0.15 WAS 17.8; DIM 2X 7.7 +0.25/-0.15 WAS 2X 7.7; DIM 17.8 +0.45/-0.15 WAS 17.8 AND DIM Ø 21.7 +0.35/-0.15 WAS Ø 21.7 +/-0.15	408466	TBR	GLS	D&L		
14AU09	R	03	-	-	12015027 - UPDATED PDM ATTRIBUTES: 12015481 & 12015026 - 2 +0.3/- 0.4 WAS 2 +/- 0.3; 2.6 +0.3/- 0.4 WAS 2.6 +/- 0.3 AND 14.2 +0.4/- 0.15 WAS 14.2 +/- 0.15	408642	APR	APR	APR		
18AU09	R	04	-	-	12015027 - UPDATED PDM ATTRIBUTES: 12015481 & 12015026 - 15.7 +0.3/-0.4 WAS 15.7 +/- 0.3	408681	APR	APR	APR		
23JN10	R	05	-	-	ALL ACTIVE PARTS - DIM 9 WAS Ø 18.01 ±0.15	411191	LHT	APR	APR		

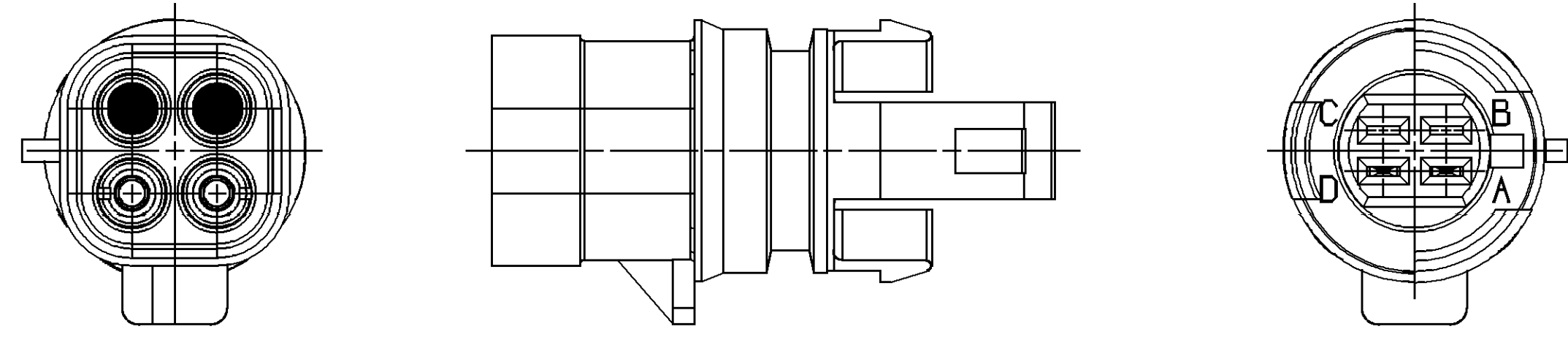


SCALE 1:1

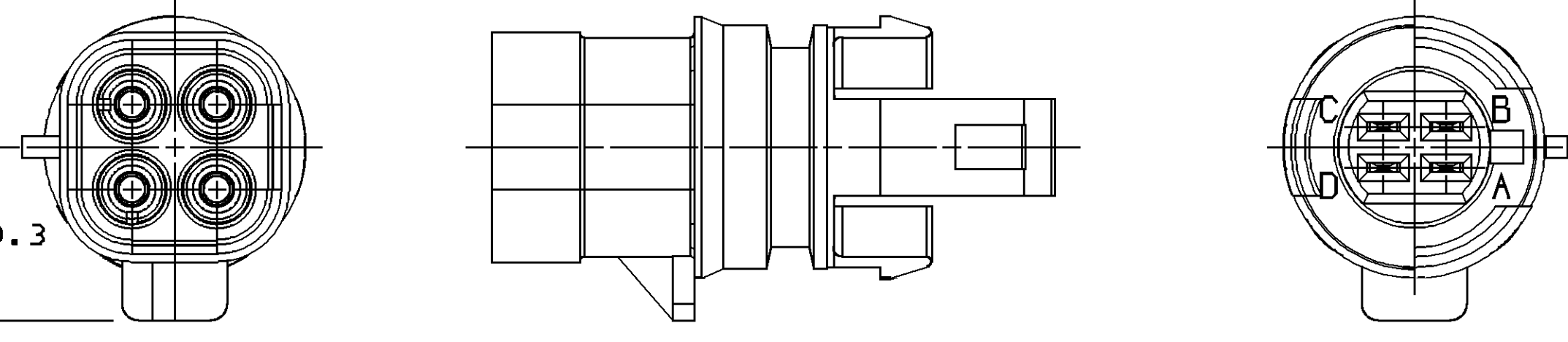
TYPE 101



TYPE 102  
SAME AS TYPE 101  
EXCEPT AS SHOWN  
SCALE 2:1

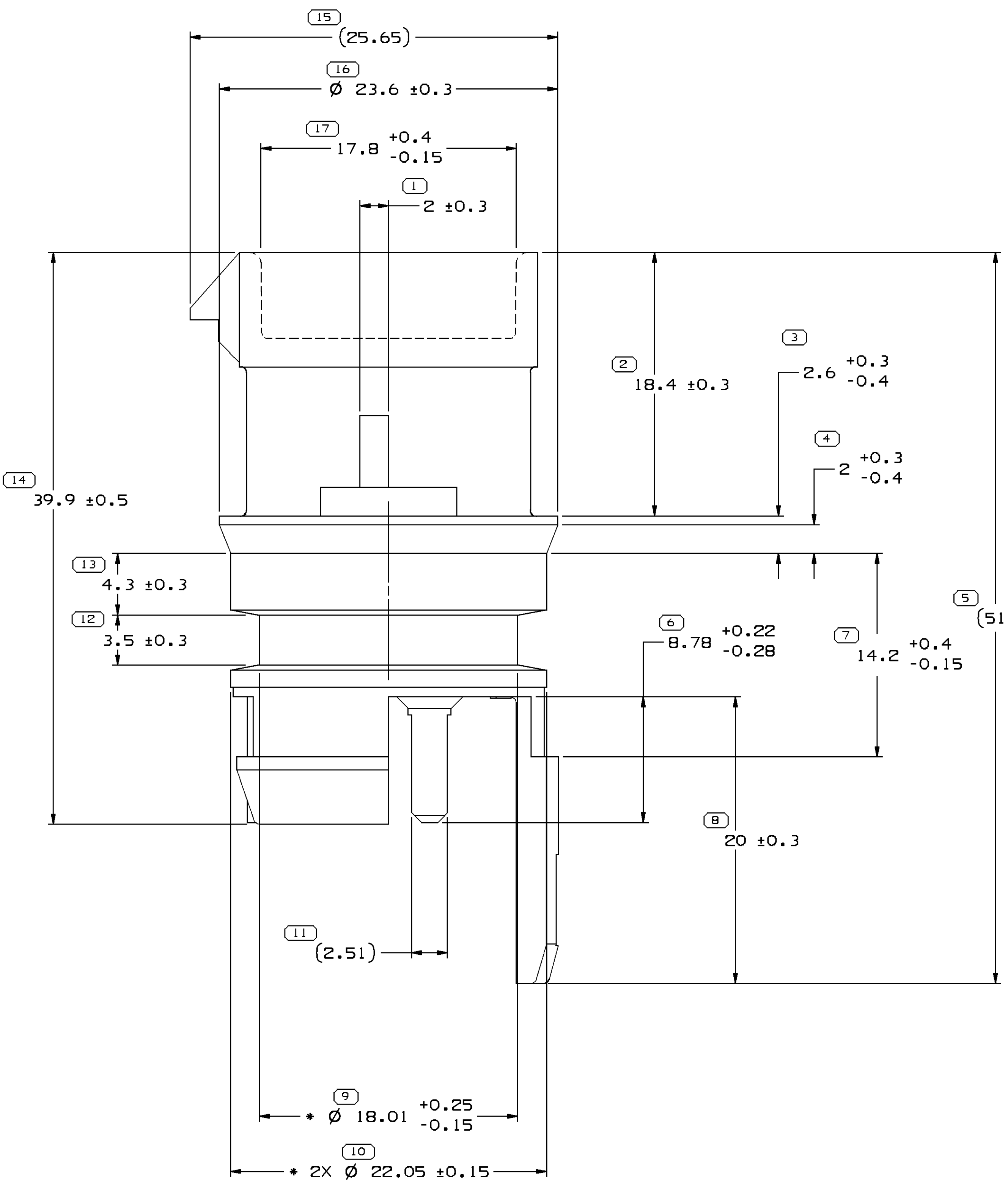


TYPE 103  
SAME AS TYPE 101  
EXCEPT AS SHOWN  
SCALE 2:1



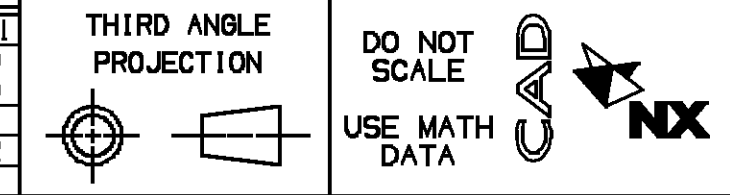
TYPE 104  
SAME AS TYPE 101  
EXCEPT AS SHOWN  
SCALE 2:1

- NOTES
- UNLESS OTHERWISE SPECIFIED AND/OR INDICATED:  
DIMENSIONS ARE TO FACE OF VIEW SHOWN AND AUTOMATICALLY ROUNDED BY COMPUTER FOR INSPECTION (SEE MATH MODEL FOR PRECISE DIMENSIONS). FOR ALL OTHER DIMENSIONS NOT SHOWN BUT REQUIRED FOR TOOL BUILD, SEE MATH MODEL FOR PRECISE TOOL PATH DATA.
  - \* DIAMETERS INCLUDE OUT OF ROUND PLUS 0.15 MAX HIGH PARTING LINE FLASH PER SIDE
  - INDICATES THERE IS NOT TERMINAL IN THIS CAVITY AND CAVITY IS TO BE SEALED
  - REFERENCE MATING COMPONENTS OR EQUIVALENT:  
CONNECTOR BLADE END - 12015030  
SLEEVE END - SEE CHART  
HOLE - Ø 22.26±0.04
  - (2.31X10.1) DELPHI CORPORATE BRAND TO BE LOCATED ON ANY EXTERIOR SURFACE, PREFERABLY VISIBLE AT FINAL ASSEMBLY. OPTIONAL CONSTRUCTION FOR EXISTING TOOLING MAY BE "PED" OR NO LOGO.
  - THIS PRODUCT IS NOT CATEGORIZED AS AN APPEARANCE ITEM. MINOR IMPERFECTIONS INCLUDING, BUT NOT LIMITED TO, FLOW MARKS, COLOR BLEMISHES, GATE VESTIGE, AND SOFT FLASH THAT DO NOT AFFECT THE FIT, FORM, OR FUNCTION OF THE PART ARE PERMISSIBLE PER DPNP-4.7-CS-01.



12015481	E5	-		POLYAMIDE COMPOUND BLUE	12089956	CLOSED	CLOSED	12089955	103	12015390	8.161
12015027	L5	-		POLYAMIDE COMPOUND BLACK	12089956	12089955	12089956	12089955	104	12103419	8.088
12015026	M5	-		POLYAMIDE COMPOUND NATURAL	12089956	12089955	CLOSED	12089955	101	12010503 & 12015390	8.124
12015025	H	-	OBSOLETE	THERMOPLASTIC MOLDING COMPOUND MED GRAY	12015036	CLOSED	12015036	CLOSED	102	12015052	8.161
PART	NO	REV	N/P	STATUS	MATERIAL SPECIFICATION AND COLOR	TERM A	TERM B	TERM C	TERM D	TYPE	VOLUME (CM³)

DIMENSIONAL RANGE (MM)		TOLERANCE	
FROM	TO	±	±
0	20	0.15	0.2
20	30	0.2	0.3
30	40	0.3	0.4
40	50	0.4	0.5
50	60	0.5	0.6
60	70	0.6	0.8
70	80	0.8	1.0
80	90	1.0	1.2
90	100	1.2	1.5
100	125	1.5	2.0
125	150	2.0	2.5
150	200	2.5	3.0
200	250	3.0	4.0
250	300	4.0	5.0
300	400	5.0	6.0
400	500	6.0	8.0
500	600	8.0	10.0
600	700	10.0	12.0
700	800	12.0	15.0
800	900	15.0	20.0
900	1000	20.0	25.0



<b>DELPHI</b>	
DELPHI PACKARD ELECTRICAL/ELECTRONIC ARCHITECTURE WARREN, OH	
DATE	
DR	
AP/VD1	SERGIO CORTES
AP/VD2	DENNIS GARCIA L.
AP/VD3	DENNIS GARCIA L.
AP/VD4	
AP/VD5	
SUBSTANCES OF CONCERN AND RECYCLED CONTENT PER DELPHI (0244930)	
DRAWING NAME TAXI ASM CONN M+P 280 W/P SHD COUPLING	
DRAWING NUMBER 12015037	
SIZE A0	SCALE 5:1
FRAME NO 1 OF 1	SHEET NO 1 OF 1
STG R	REV 05

# Mouser Electronics

Authorized Distributor

Click to View Pricing, Inventory, Delivery & Lifecycle Information:

[Aptiv:](#)

[12015027](#)