

CHARGE MODE 2 CABLE



Mode 2 EV Charger

BENEFITS

- Superior durability and proven in automotive mass production
- Dual-thermo sensors in the grid plug provide superior overheating protection
- Grid cord as required by country of use

FEATURES

- EVSE provides restart in the event of power grid fault
- Product according to the new IEC62752 standard including Type B RCD and residential DC current detection
- Superior control box water sealing protection: IP67 (higher than the standard)



AVAILABLE CONFIGURATIONS

Design	Rubber overmold
Inlet Standard	IEC62196 Type II



APPLICATIONS

Portable Electric Vehicle Supply Equipment (EVSE) for grid-to-vehicle charging



TECHNICAL CHARACTERISTICS

Mating Cycles

10 000

TEMP RANGE

+50°C

-40°C

MAX CURRENT AT 85°C

6 - 14 A

VIBRATION LEVEL

V1

VOLTAGE RANGE

240 V

SEALING CLASS

IP67

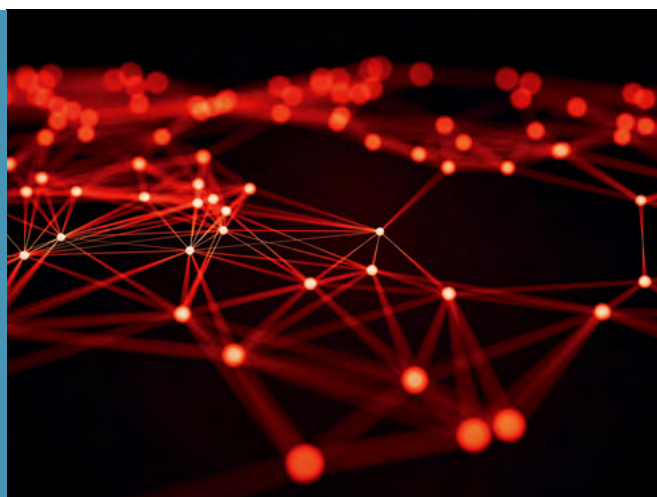
EVSE Box

See back page for representative part numbers and packaging dimensions.

About Aptiv

Aptiv is a global technology company that develops safer, greener and more connected solutions enabling the future of mobility.

Visit aptiv.com



• **APTIV** •

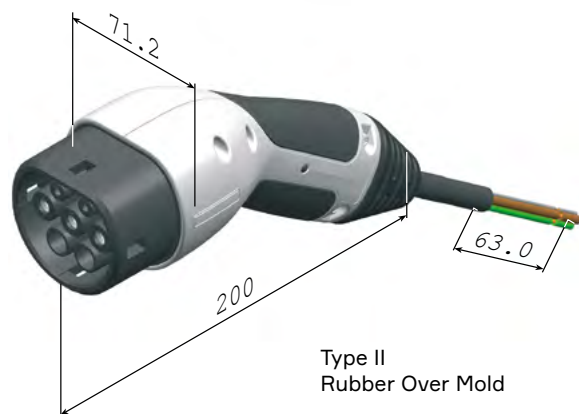
Part number	Type (veh/wall)	Current	# Phase	Cable Length	Countries*	Certification
35054780	Type II	10A	1-phase	5.0 / 16.40	Europe (Germany, France...)	CE
35086913	Type II	8A	1-phase	5.0 / 16.41	Finland	CE
35054781	Type II	10A	1-phase	5.0 / 16.42	UK, Ireland, Cyprus, Malta	CE
35058252	Type II	6A	1-phase	5.0 / 16.43	Denmark	CE
35054782	Type II	8A	1-phase	5.0 / 16.44	Switzerland	CE
35054784	Type II	10A	1-phase	5.0 / 16.45	Norway	CE
35054788	Type II	8A	1-phase	5.0 / 16.46	Italy	CE
35268956	Type II	14A	1-phase	5.0 / 16.47	Europe - Grid plug CEE 16/3	CE

* Other countries outside Europe also available.

For more specific information, please contact your Aptiv representative.



DIMENSION MEASUREMENT SAMPLE



The dimensions are in mm.



COMPATIBLE WITH



Part numbers, specifications, dimensions and performance data in this document are for general references only and are subject to change without notice. To verify product information, please contact an Aptiv representative.

CS-SP97-HV-En1019

• **A P T I V** •

aptiv.com | © 2019 Aptiv. All rights reserved

Mouser Electronics

Authorized Distributor

Click to View Pricing, Inventory, Delivery & Lifecycle Information:

[Aptiv:](#)

[35054784](#) [35054780](#) [35054782](#) [35054781](#) [35058252](#) [35086913](#)