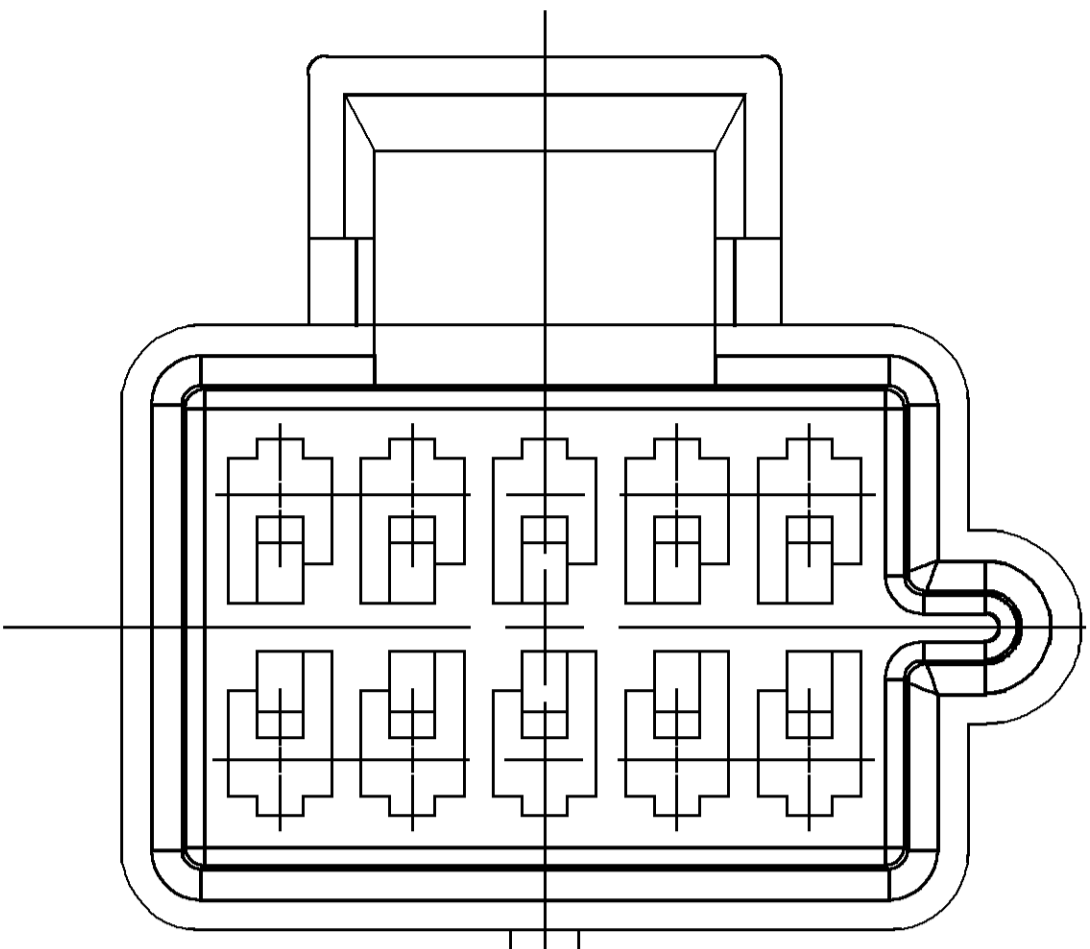
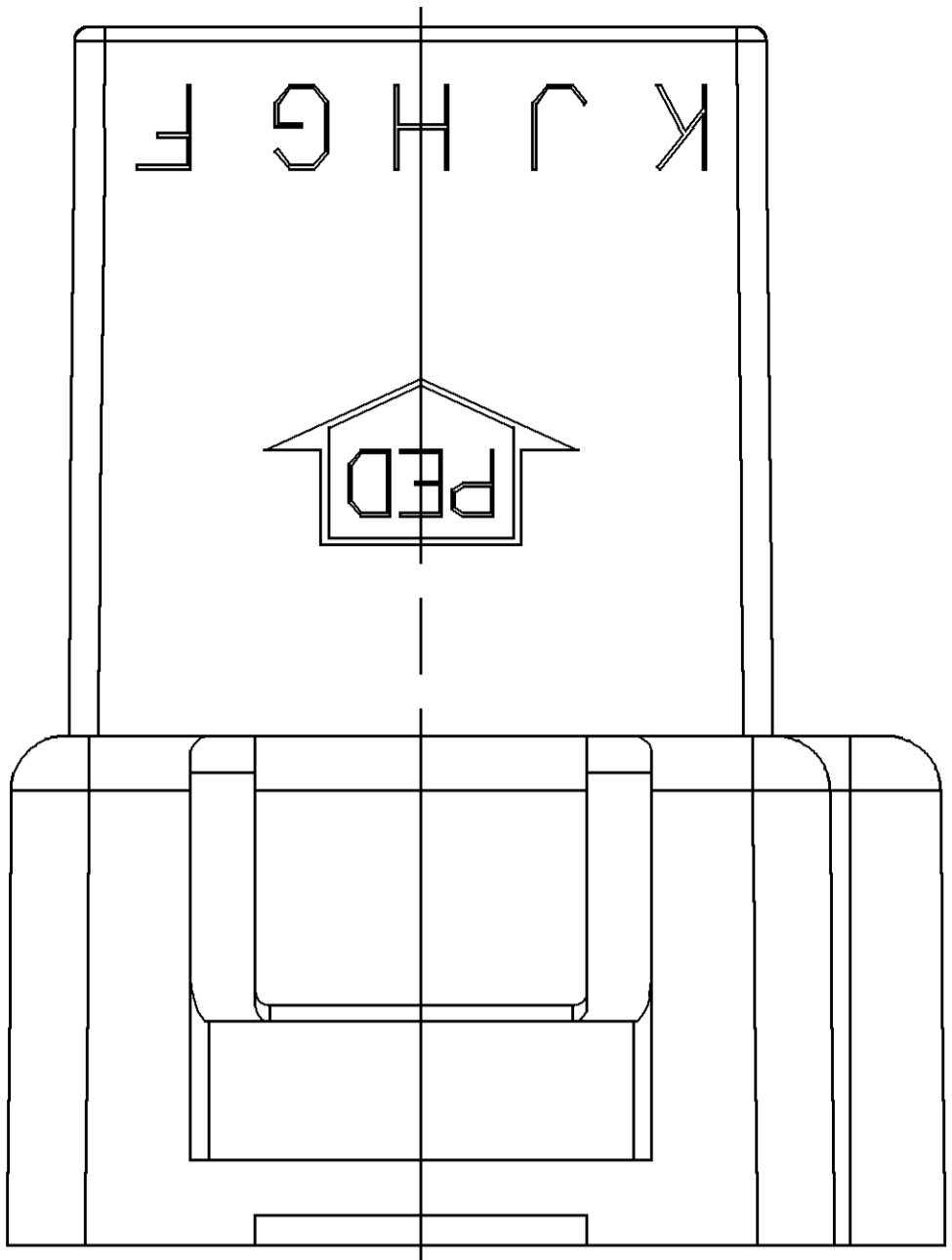
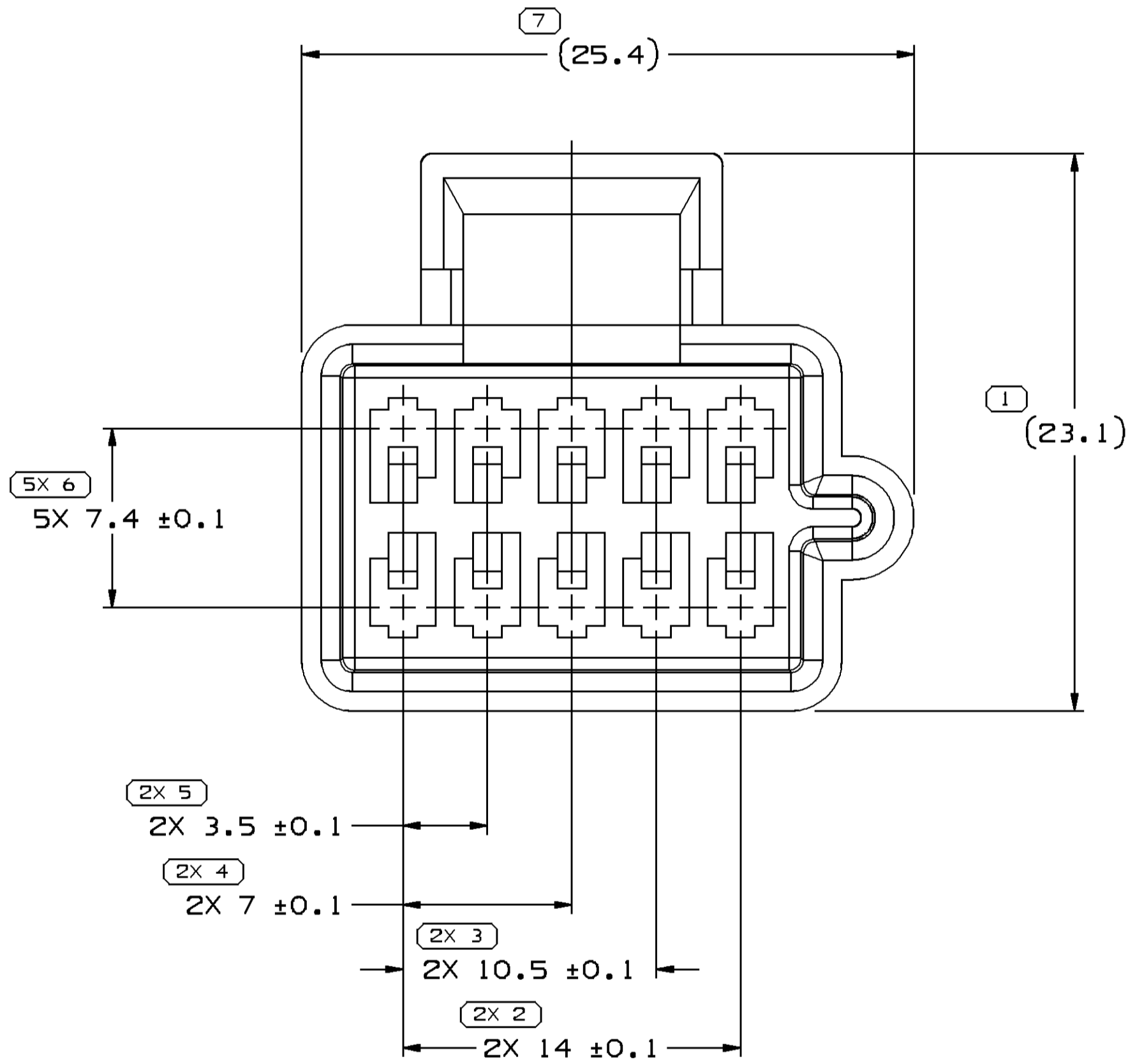
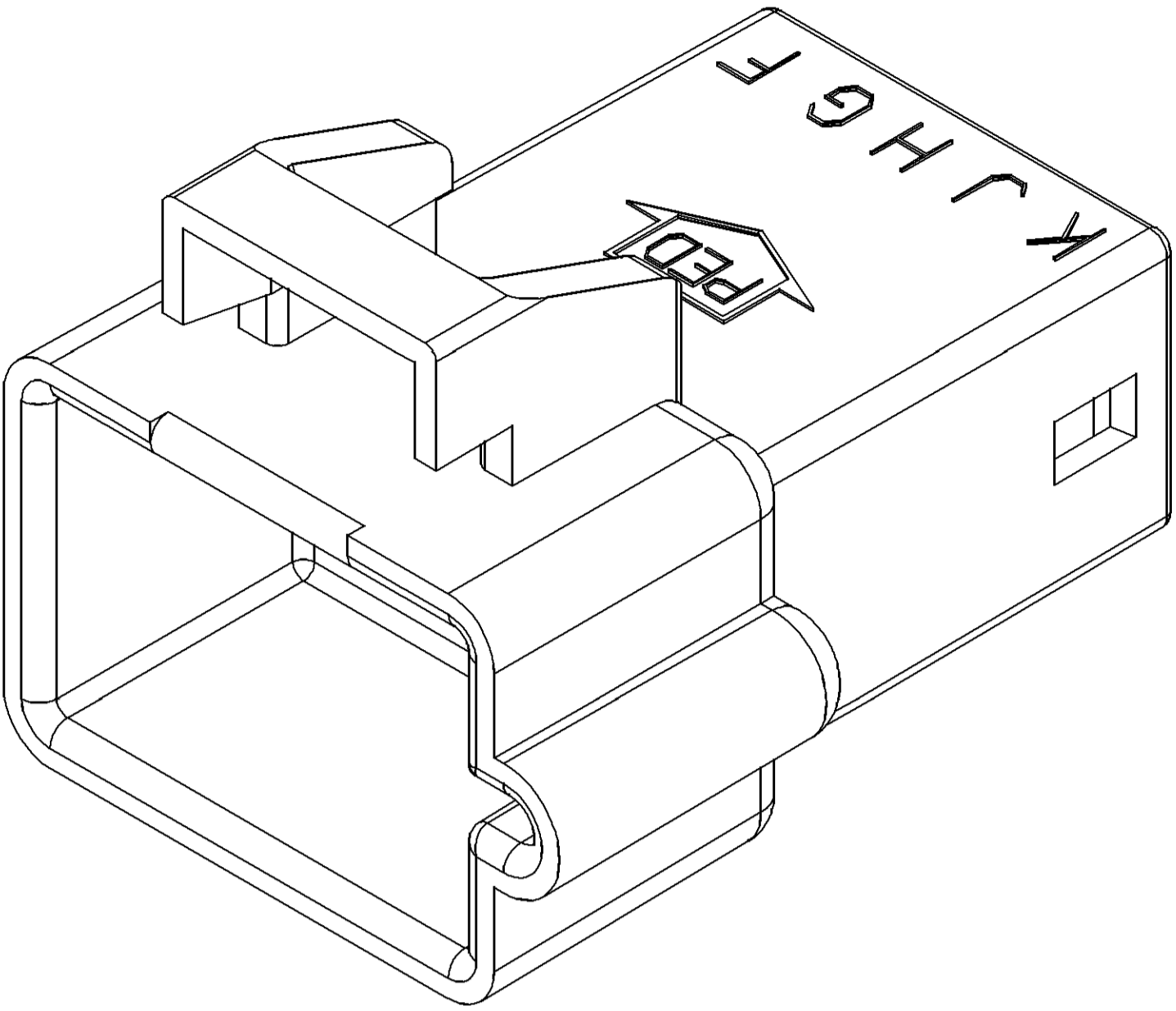
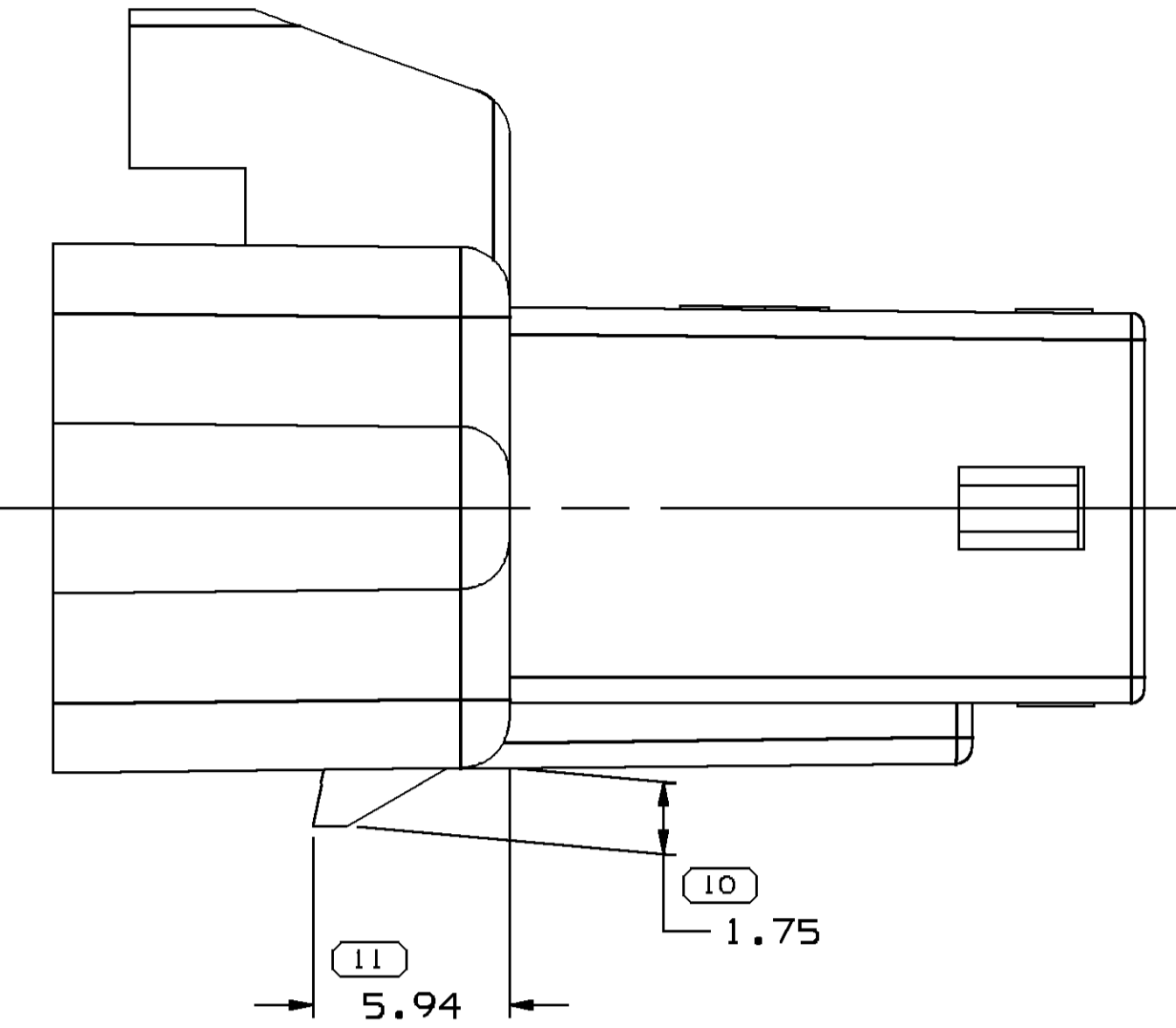


SYMBOL DEFINITION		MISSING SYMBOLS	
A DIMENSION WITHOUT AN INSPECTION REPORT SYMBOL ○ DOES NOT REQUIRE INSPECTION. IT MAY BE CONTROLLED ON THE INDIVIDUAL COMPONENT DRAWING.	TOTAL NO OF INSPECTIONS REQUIRED	NO MISSING SYMBOL NUMBER	
	LAST NO. USED		
	19		
	11		

CWS STATUS				REVISION HISTORY				AUTH		DR		APVD/APVD	
DATE	STG	REV	N/P	CHG	ZONE								
29MR99	R	001	-	-		CLEARED REV COLUMN: 15324758 - RELEASED		990005	AM	CMP	08		
01MR06	R	02	-	-		12064770 - MAT'L SPEC WAS R0071753		278002	CCV	JAA	PYP		
22FE08	R	03	-	-		ALL PARTS - ADDED APPLICATION DATA NOTE, APPEARANCE ITEM NOTE & MAT'L RECYCLING CODE LABEL, REMOVED PART ACCEPTS NOTE & REFERENCE MATING NOTE AND REVISED MAT'L CALLOUT TO GENERIC CALLOUT		403856	EAJ	FRG	JGS		
25JAI11	R	04	-	-		12064770, 15324056 & 15324758 - UPDATED CAVITY: 13865723 - RELEASED AND ADDED TYPE 102 VIEWS		413118	MAB	JVM	GEM		

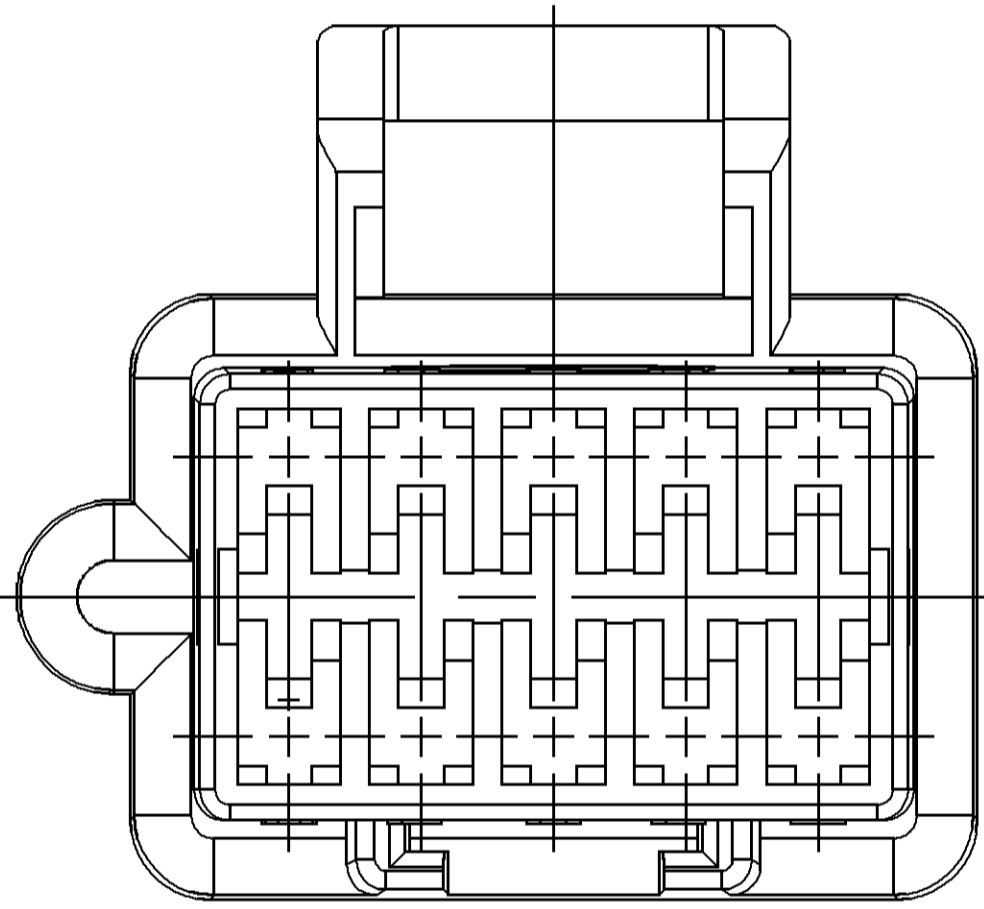
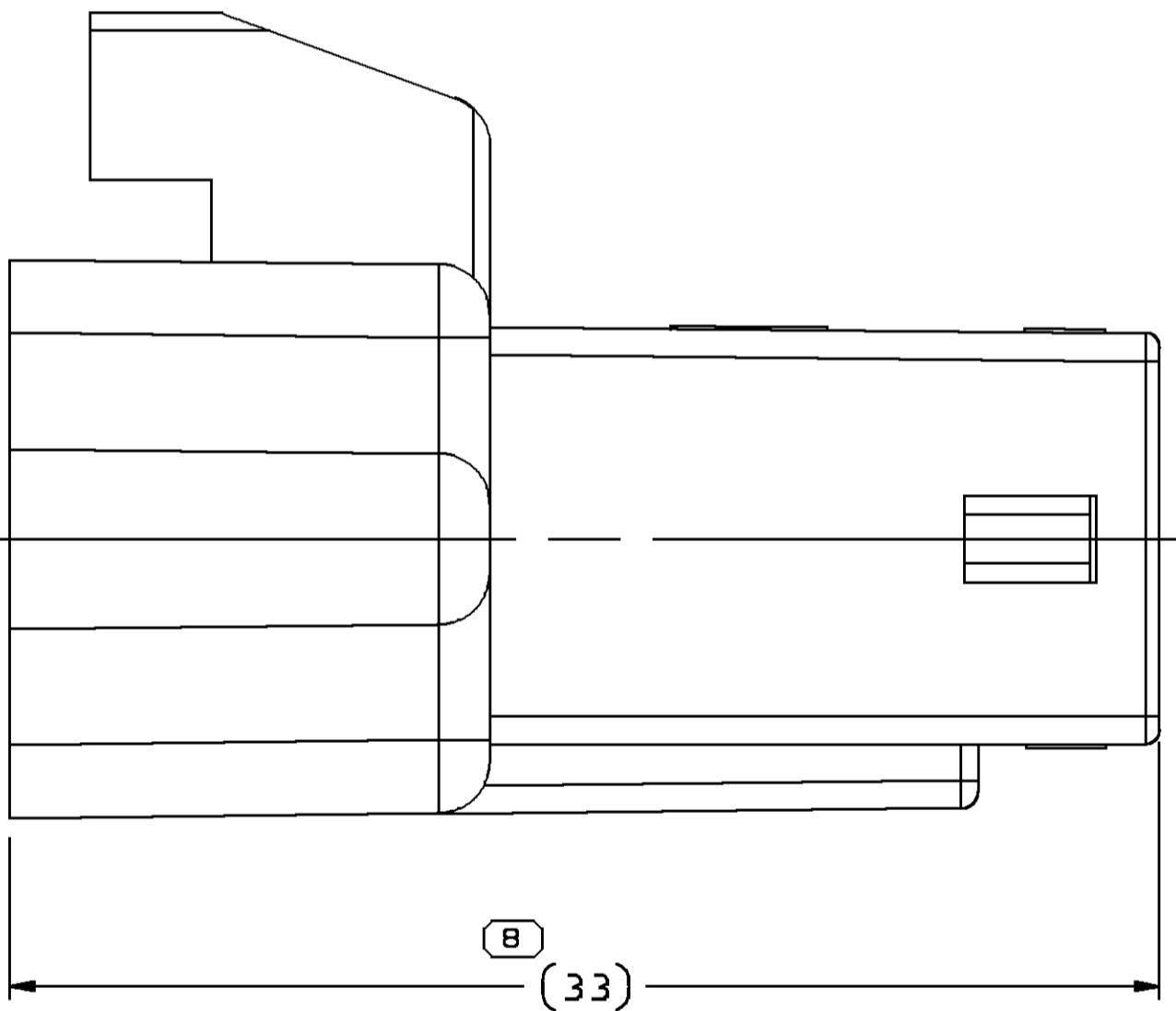


TYPE 102  
SAME AS TYPE 101  
EXCEPT AS SHOWN



TYPE 101

MATERIAL RECYCLING CODE OPTIONAL



NOTES

- UNLESS OTHERWISE SPECIFIED AND/OR INDICATED:  
DIMENSIONS ARE TO FACE OF VIEW SHOWN AND AUTOMATICALLY ROUNDED BY COMPUTER FOR INSPECTION (SEE MATH MODEL FOR PRECISE DIMENSIONS). FOR ALL OTHER DIMENSIONS NOT SHOWN BUT REQUIRED FOR TOOL BUILD, SEE MATH MODEL FOR PRECISE TOOL PATH DATA.
- THIS CONNECTOR WILL PASS THROUGH A Ø 31 MIN HOLE.
- MATERIAL RECYCLING CODE PER ISO 11469. (2.3)X(0.1) CHARACTERS AS SHOWN TO BE LOCATED ON ANY EXTERIOR SURFACE.
- THIS PRODUCT IS NOT CATEGORIZED AS AN APPEARANCE ITEM. MINOR IMPERFECTIONS INCLUDING, BUT NOT LIMITED TO, FLOW MARKS, COLOR BLEMISHES, GATE VESTIGE, AND SOFT FLASH THAT DO NOT AFFECT THE FIT, FORM, OR FUNCTION OF THE PART ARE PERMISSIBLE PER DPNP-4.7-CS-01.
- (2.3)X(0.1) DELPHI CORPORATE BRAND TO BE LOCATED ON ANY EXTERIOR SURFACE, PREFERABLY VISIBLE AT FINAL ASSEMBLY. OPTIONAL CONSTRUCTION FOR EXISTING TOOLING MAY BE "PED".
- FOR APPLICATION DATA SEE THE INDIVIDUAL APPLICATION DRAWINGS.

13865723	01	-	-	POLYAMIDE COMPOUND CREAM	102	4.149
15324758	01	AB	-	POLYAMIDE COMPOUND BLACK	101	4.142
15324056	A2	-	-	POLYAMIDE COMPOUND BLUE	101	4.142
12064770	03	AB	-	POLYAMIDE COMPOUND CREAM	101	4.142
PART NO	REV	N/P	STATUS	MATERIAL SPECIFICATION AND COLOR	TYPE	VOL CM³

DIMENSIONAL RANGE (MM)		TOLERANCE		CHART		ET	
FROM	TO	±0.1	±0.2	±0.3	±0.4	±0.5	±0.6
140.151	140.151	±0.2	±0.3	±0.4	±0.5	±0.6	±0.8
140.151	140.151	±0.2	±0.3	±0.4	±0.5	±0.6	±0.8
140.151	140.151	±0.2	±0.3	±0.4	±0.5	±0.6	±0.8

2 PROCESS SENSITIVE DIMENSION

DIMENSIONS ENCLOSED IN ( ) INDICATE REFERENCE DIMENSIONS AND NO TOLERANCE LIMITS ARE ESTABLISHED

PART DRAWING	
STYLE	SEE CHART
VOLUME (CM³)	SEE CHART
DISTR CODE	D
UNLESS OTHERWISE SPECIFIED	
THIS DOCUMENT IS IN ACCORDANCE WITH ASME Y14.5M-1994 AS MODIFIED BY THE 2003 DIMENSIONING AND TOLERANCING ADDENDUM-2003. SEPARATE PATTERNING OF FEATURES MAY BE OBTAINED SEPARATELY PER DPNP-4.7-CS-01.	
ALL DIMENSIONS ARE IN MILLIMETERS	
REFERENCE	
THIRD ANGLE PROJECTION	DO NOT SCALE
USE MATH DATA	USE MATH DATA

DELPHI	
DELPHI PACKARD ELECTRICAL/ELECTRONIC ARCHITECTURE WARREN, OH	
DR	DATE
APVD1 E. RODRIGUEZ	03SE98
APVD2 R. CHACON	120C98
APVD3 OMAR GALLEGOS	22FE99
APVD4	
APVD5	
SUBSTANCES OF CONCERN AND RECYCLED CONTENT PER DELPHI (0944900)	
MATERIAL SEE CHART	
DRAWING NAME	
TAXI CONN M M/P 150	
DRAWING NUMBER	
15324057	
SIZE A0	SCALE 5:1
FRAME NO 1	SHEET NO 1
STG 1	REV 04

# Mouser Electronics

Authorized Distributor

Click to View Pricing, Inventory, Delivery & Lifecycle Information:

[Aptiv:](#)  
[13865723](#)