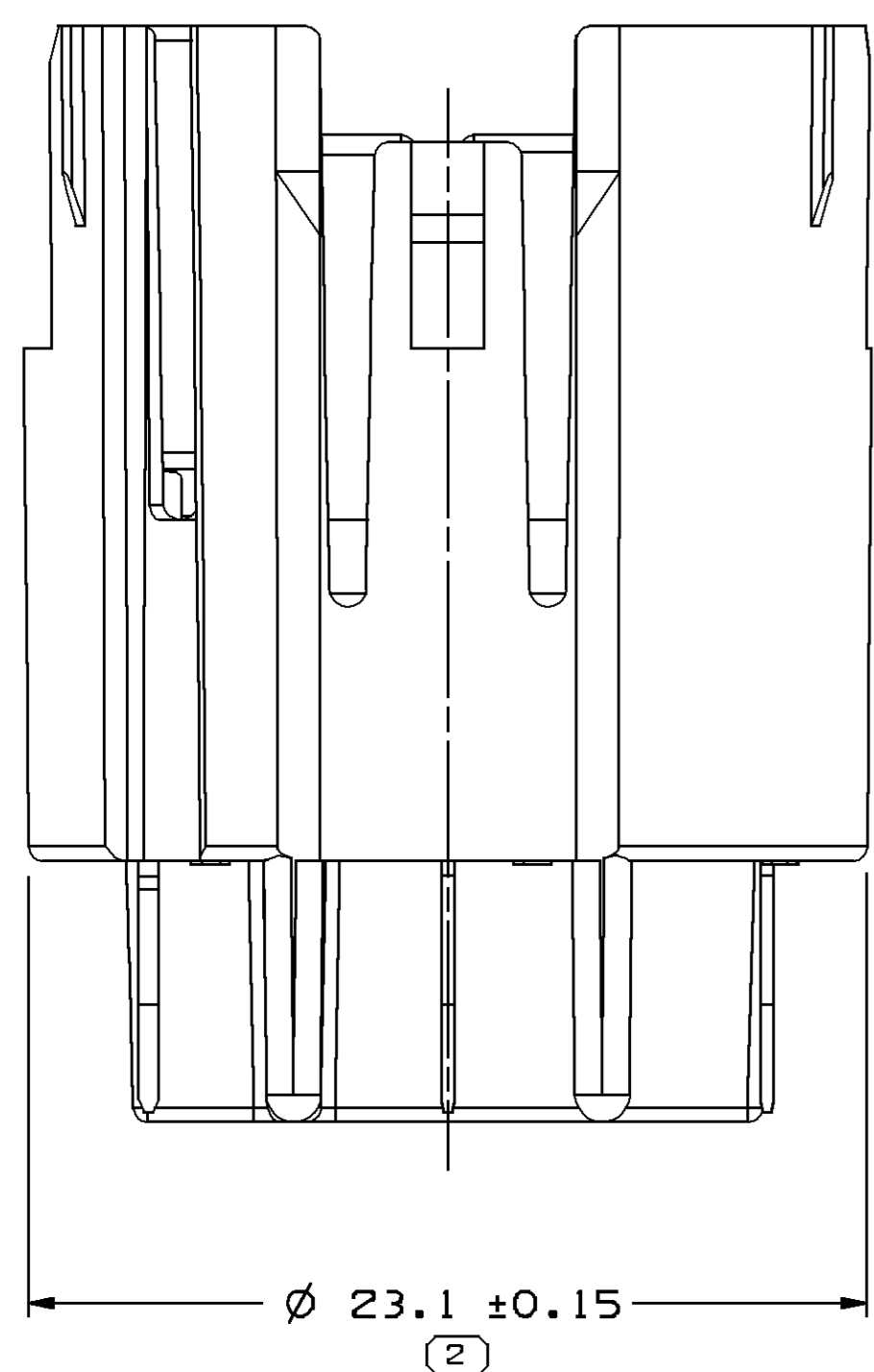
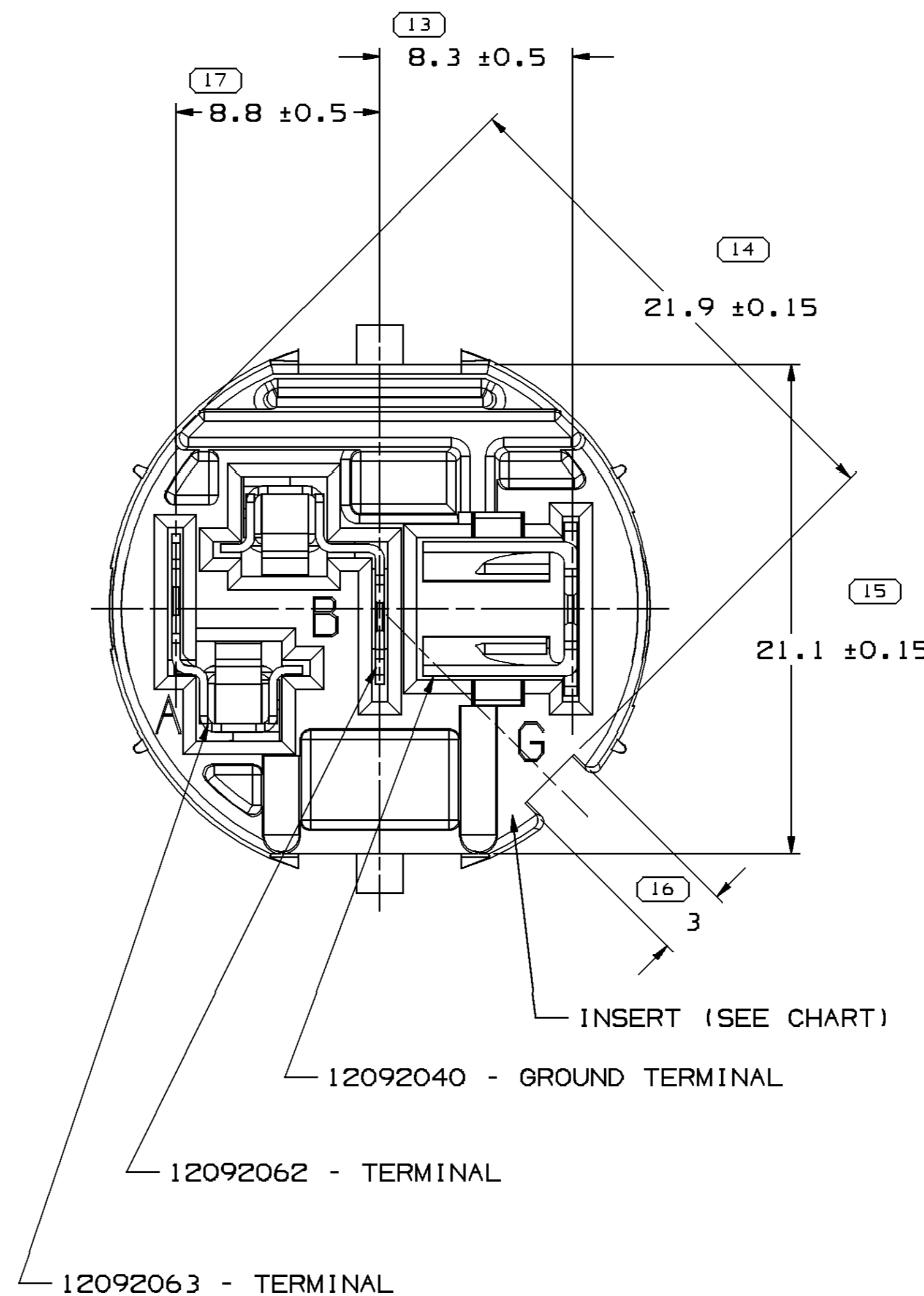
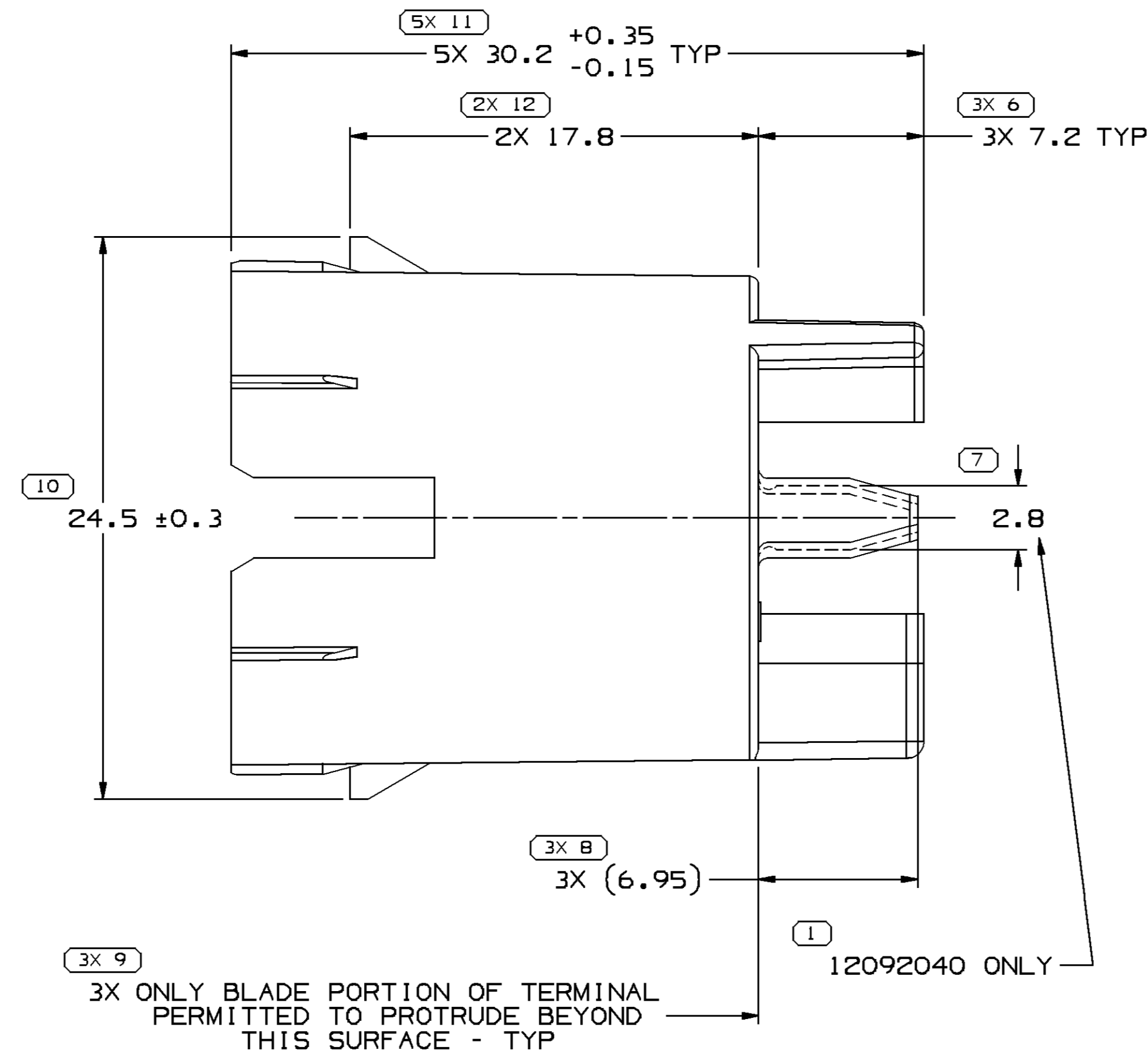
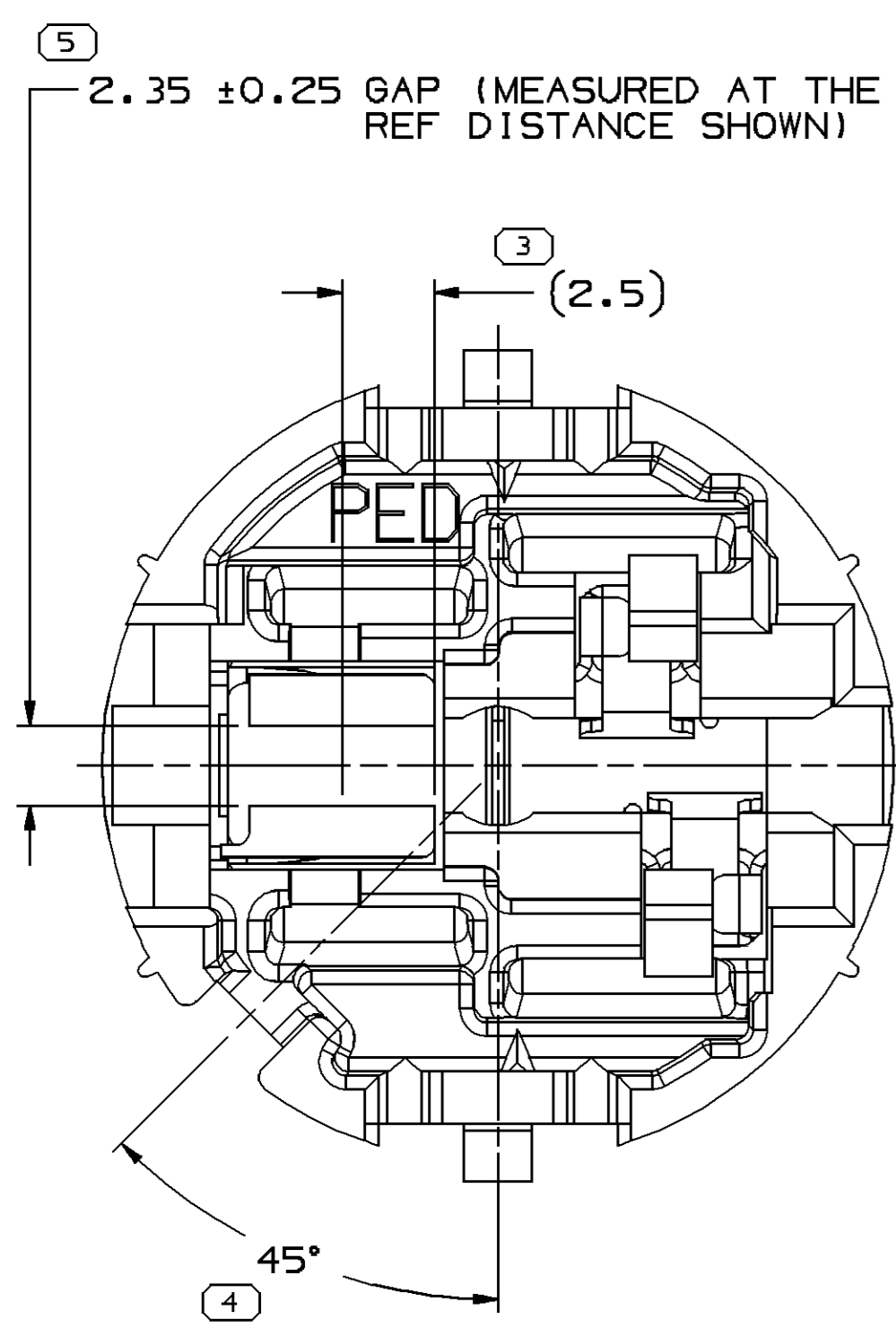






MISSING SYMBOLS	DWG STATUS					ZONE	REVISION HISTORY	AUTH	DR	APD/APD	
	DATE	STG	REV	N/P	CHK					1	2
NO MISSING SYMBOL NUMBER	23JA02	R	06	-	-		CLEARED DIM COLS: ALL ACTIVE PARTS - REVISED DIM PLACES (1, 1)	219182	RVP	RVP	AL
	21JA02	R	07	-	-		ALL ACTIVE PARTS - REVISED GRAPHICS	218736	RVP	RVP	AL
	18AP02	R	08	-	-		ALL ACTIVE PARTS - REVISED GRAPHICS	224130	RVP	RVP	AL
	23JN03	R	09	-	-		12186433 - INACTIVE	241981	MAC	MAC	MEF
	28AP04	R	10	-	-		REVISED TERMINAL 12092040: DIM 23 CORRECTED (WAS 8.41)	253560	LMB	LMB	BR
	10MR05	R	11	-	-		ALL ACTIVE PARTS - UPDATED PDM ATTRIBUTES	265400	CCV	JAA	MEF
	15AU06	R	12	-	-		12186433 - OBSOLETE	283319	CCV	JVM	MEF
	15FE06	R	13	-	-		12177163 - UPDATED INSPECTION SYMBOLS	403819	LHT	PIP	LHT
	27OC08	R	14	-	-		12177163 - COLOR OF INSERT WAS BEIGE	406461	PTG	MAC	PTG



- NOTES
1. UNLESS OTHERWISE SPECIFIED AND/OR INDICATED:
DIMENSIONS ARE TO FACE OF VIEW SHOWN AND AUTOMATICALLY ROUNDED BY COMPUTER FOR INSPECTION (SEE MATH MODEL FOR PRECISE DIMENSIONS). FOR ALL OTHER DIMENSIONS NOT SHOWN BUT REQUIRED FOR TOOL BUILD, SEE MATH MODEL FOR PRECISE TOOL PATH DATA.
 2. TERMINAL RETENTION 25N MIN IN CAVITY "G".
 3. TERMINAL RETENTION 10N MIN IN CAVITIES "A" AND "B".
 4. (1.7X(0.1)) DELPHI CORPORATE BRAND TO BE LOCATED ON ANY EXTERIOR SURFACE, PREFERABLY VISIBLE AT FINAL ASSEMBLY. OPTIONAL CONSTRUCTION TO BE "PED" OR NO LOGO.
 5. THIS PRODUCT IS NOT CATEGORIZED AS AN APPEARANCE ITEM. MINOR IMPERFECTIONS INCLUDING, BUT NOT LIMITED TO, FLOW MARKS, COLOR BLEMISHES, GATE VESTIGE, AND SOFT FLASH THAT DO NOT AFFECT THE FIT, FORM, OR FUNCTION OF THE PART ARE PERMISSIBLE PER NAP 4.10-18.

15354863	A2	INACTIVE	15354862	NAT	15354864 OR 15354865
12186433	04	AB OBSOLETE	12186431	BLK	12186254
12177163	05	AC	12177162	CRM	12160394 OR 12160395
ASSEMBLY NO	REV	N/P STATUS	INSERT	COLOR	MATING LP SOCKET BODY

		7		PROCESS SENSITIVE DIMENSION					
				DIMENSIONS ENCLOSED IN () INDICATE REFERENCE DIMENSIONS AND NO TOLERANCE LIMITS ARE ESTABLISHED					
DIMENSIONAL RANGE (MM)				CHART E					
FROM	> 0	> 20	> 30	> 70	> 100	> 150	> 200	> 250	> 300
	20	30	70	100	150	200	250	300	400
TOLERANCE UNLESS OTHERWISE SPECIFIED									
	±0,15	±0,2	±0,3	±0,4	±0,5	±0,6	±0,8	±1	±1,6

VPO TYPE		PART DRAWING	
STYLE			
VOLUME (QM)		DISTR CODE	
		D	
UNLESS OTHERWISE SPECIFIED			
<p>THIS DOCUMENT IS IN ACCORDANCE WITH ASME Y14.5M-1994 AS AMENDED BY THE 2018 ADDENDUM, DIMENSIONING AND TOLERANCING ADDENDUM (2018) - ALL DIMENSIC TOLERANCES AND SELECTED DATUMS APPLY. RULE #1 PERFECT FORM AT MAXIMUM MATERIAL CONDITION SHALL BE USED UNLESS OTHERWISE NOTED. THIS DOCUMENT IS NOT A CONTRACT. DIMENSIONS ARE IN MILLIMETERS DIMENSIONS ARE IN MILLIMETERS REMOVAL OF DIMENSIONAL TOLERANCES ALL DIMENSIONS ARE IN MILLIMETERS</p>			
REFERENCE			
THIRD ANGLE PROJECTION		DO NOT SCALE	
USE MATH DATA		   	
		NX	

<h1 style="text-align: center;">DELPHI</h1>									
<p style="text-align: center;">DELPHI PACKARD ELECTRICAL/ELECTRONIC ARCHITECTURE WARREN, OH</p>									
					DATE				
DPR									
APVD1	HENRY HOKE				16MY96				
APVD2	HENRY HOKE				16MY96				
APVD3	G. RINEHART				21MY96				
APVD4									
APVD5									
<p style="text-align: center;">SUBSTANCES OF CONCERN AND RECYCLED CONTENT PER DELPHI 10949001</p>									
<p>MATERIAL SEE DRAWING</p>									
<p>DRAWING NAME</p> <p style="text-align: center;">TAXI ASM LOCK INSERT LP SOC WGE BSE W3</p>									
<p>DRAWING NUMBER</p> <p style="text-align: center; font-size: 2em;">12186472</p>									
SIZE	SCALE	FRONT		SIDE		TOP	REV	NOT	
A0	5:1	1 OF 1		1 OF 1		R	14	14	

Mouser Electronics

Authorized Distributor

Click to View Pricing, Inventory, Delivery & Lifecycle Information:

[Aptiv:](#)

[12177163](#)