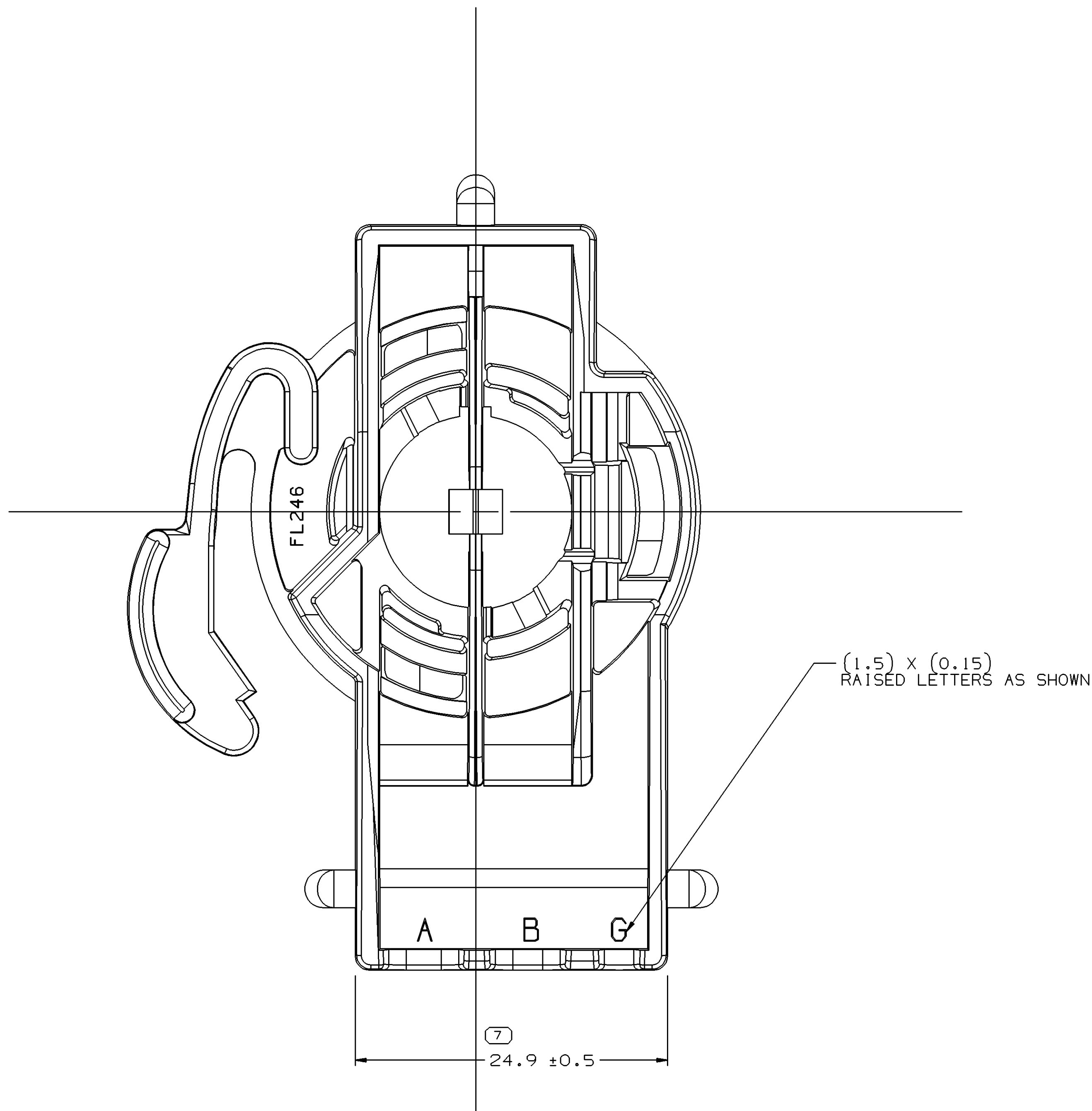
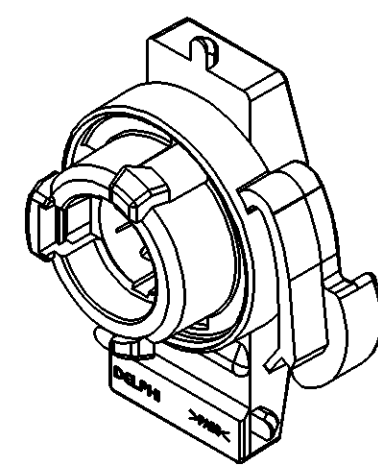


NOTES

- UNLESS OTHERWISE SPECIFIED AND/OR INDICATED: DIMENSIONS ARE TO FACE OF VIEW SHOWN AND AUTOMATICALLY ROUNDED BY COMPUTER FOR INSPECTION (SEE MATH MODEL FOR PRECISE DIMENSIONS). FOR ALL OTHER DIMENSIONS NOT SHOWN BUT REQUIRED FOR TOOL BUILD, SEE MATH MODEL FOR PRECISE TOOL PATH DATA.
- MATERIAL RECYCLING CODE >PA66< PER SAE J1344. (1.5)X(0.15) RAISED CHARACTERS AS SHOWN TO BE LOCATED ON ANY EXTERIOR SURFACE. OPTIONAL CONSTRUCTION TO BE NO MATERIAL RECYCLING CODE.
- SEALING CODE 1 - DESIGN HAS LIMITED SEALING CAPABILITY.
- THIS PART ACCEPTS THE FOLLOWING COMPONENTS OR EQUIVALENT:
GROUND TERMINAL 08917861
GASKET 12020720
COVER 12077444
MATING BULB 09438848
- (1.5)X(0.15) RAISED DELPHI CORPORATE BRAND TO BE LOCATED ON ANY EXTERIOR SURFACE, PREFERABLY VISIBLE AT FINAL ASSEMBLY. OPTIONAL CONSTRUCTION TO BE "PED" OR NO LOGO.
- THIS PART IS NOT CONTROLLED FOR AUTOMATIC FEEDING.



MISSING SYMBOLS		SYMBOL DEFINITION	
NO MISSING SYMBOLS WITHOUT AN INSPECTION REPORT SYMBOL	DIMENSIONS NOT REQUIRE INSPECTION. IT MAY BE CONTROLLED ON THE INDIVIDUAL COMPONENT DRAWING.	TOTAL NO. OF INSPECTIONS REQUIRED	8
		LAST NO. USED	8

DWG STATUS				REVISION HISTORY				AUTH			
DATE	STG	REV	CHG	N/P	ZONE				DR	CK	APVD
13FEB99	R	001	-	-	-	12089345 & 12089346 RELEASED TO REV. "A"			890005	JC	JL RL
10MY99	R	002	-	-	-	ALL PARTS - ADDED TOLERANCES (7 FLCS) - NO REV. UPDATE REQ'D.			126633	RW	RW RL
04AUG99	R	003	-	-	-	ADDED BURN AND NON FILL NOTE & REVISED GRAPHICS NO REV UPDATE REQ'D.			129009	CDH	CDH RL
17OCT99	R	004	-	-	-	5.0 WAS 5.00			129858	BDG	BDG RL
16JUN99	R	005	-	-	-	12089345 - REVISED MAT'L SPEC NO REV UPDATE REQ'D.			125417	ATL	ATL RL
31JUL00	R	006	-	-	-	REDRAWN TO T00/PD			000009	AKJ	END RC
14SEP01	R	007	-	-	-	12089346 - MAT'L SPEC WAS R0067535			212575	ROH	ROH AL
19FEB02	R	008	-	-	-	ALL PARTS - ADDED DIM, REVISED MAT'L SPEC & UPDATED PDM ATTRIBUTES			219921	RH	RH AL

FRAME NUMBER	SHEET NUMBER	DRAWING NUMBER	DWG STATUS	
2 OF 2	1 OF 1	12041469	STG	REV
			R	008

12089346	T	R	A6	-	-	M3592001 - PA66 HS 1M BLK	11.322
12089345	R	A6	-	-	-	M3592012 - PA66 HS 1M LT GRA	11.322
PART	NO	STG	REV	STATUS	MATERIAL SPECIFICATION AND COLOR		VOL CM ³

DIMENSIONAL RANGE (MM)		TOLERANCE	
FROM	TO	±	°
0	> 20	> .30	> .75
20	> 30	> .30	> .75
30	> 40	> .30	> .75
40	> 50	> .30	> .75
50	> 60	> .30	> .75
60	> 70	> .30	> .75
70	> 80	> .30	> .75
80	> 90	> .30	> .75
90	> 100	> .30	> .75
100	> 110	> .30	> .75
110	> 120	> .30	> .75
120	> 130	> .30	> .75
130	> 140	> .30	> .75
140	> 150	> .30	> .75
150	> 160	> .30	> .75
160	> 170	> .30	> .75
170	> 180	> .30	> .75
180	> 190	> .30	> .75
190	> 200	> .30	> .75
200	> 210	> .30	> .75
210	> 220	> .30	> .75
220	> 230	> .30	> .75
230	> 240	> .30	> .75
240	> 250	> .30	> .75
250	> 260	> .30	> .75
260	> 270	> .30	> .75
270	> 280	> .30	> .75
280	> 290	> .30	> .75
290	> 300	> .30	> .75
300	> 310	> .30	> .75
310	> 320	> .30	> .75
320	> 330	> .30	> .75
330	> 340	> .30	> .75
340	> 350	> .30	> .75
350	> 360	> .30	> .75
360	> 370	> .30	> .75
370	> 380	> .30	> .75
380	> 390	> .30	> .75
390	> 400	> .30	> .75
400	> 410	> .30	> .75
410	> 420	> .30	> .75
420	> 430	> .30	> .75
430	> 440	> .30	> .75
440	> 450	> .30	> .75
450	> 460	> .30	> .75
460	> 470	> .30	> .75
470	> 480	> .30	> .75
480	> 490	> .30	> .75
490	> 500	> .30	> .75
500	> 510	> .30	> .75
510	> 520	> .30	> .75
520	> 530	> .30	> .75
530	> 540	> .30	> .75
540	> 550	> .30	> .75
550	> 560	> .30	> .75
560	> 570	> .30	> .75
570	> 580	> .30	> .75
580	> 590	> .30	> .75
590	> 600	> .30	> .75
600	> 610	> .30	> .75
610	> 620	> .30	> .75
620	> 630	> .30	> .75
630	> 640	> .30	> .75
640	> 650	> .30	> .75
650	> 660	> .30	> .75
660	> 670	> .30	> .75
670	> 680	> .30	> .75
680	> 690	> .30	> .75
690	> 700	> .30	> .75
700	> 710	> .30	> .75
710	> 720	> .30	> .75
720	> 730	> .30	> .75
730	> 740	> .30	> .75
740	> 750	> .30	> .75
750	> 760	> .30	> .75
760	> 770	> .30	> .75
770	> 780	> .30	> .75
780	> 790	> .30	> .75
790	> 800	> .30	> .75
800	> 810	> .30	> .75
810	> 820	> .30	> .75
820	> 830	> .30	> .75
830	> 840	> .30	> .75
840	> 850	> .30	> .75
850	> 860	> .30	> .75
860	> 870	> .30	> .75
870	> 880	> .30	> .75
880	> 890	> .30	> .75
890	> 900	> .30	> .75
900	> 910	> .30	> .75
910	> 920	> .30	> .75
920	> 930	> .30	> .75
930	> 940	> .30	> .75
940	> 950	> .30	> .75
950	> 960	> .30	> .75
960	> 970	> .30	> .75
970	> 980	> .30	> .75
980	> 990	> .30	> .75
990	> 1000	> .30	> .75
1000	> 1010	> .30	> .75
1010	> 1020	> .30	> .75
1020	> 1030	> .30	> .75
1030	> 1040	> .30	> .75
1040	> 1050	> .30	> .75
1050	> 1060	> .30	> .75
1060	> 1070	> .30	> .75
1070	> 1080	> .30	> .75
1080	> 1090	> .30	> .75
1090	> 1100	> .30	> .75
1100	> 1110	> .30	> .75
1110	> 1120	> .30	> .75
1120	> 1130	> .30	> .75
1130	> 1140	> .30	> .75
1140	> 1150	> .30	> .75
1150	> 1160	> .30	> .75
1160	> 1170	> .30	> .75
1170	> 1180	> .30	> .75
1180	> 1190	> .30	> .75
1190	> 1200	> .30	> .75
1200	> 1210	> .30	> .75
1210	> 1220	> .30	> .75
1220	> 1230	> .30	> .75
1230	> 1240	> .30	> .75
1240	> 1250	> .30	> .75
1250	> 1260	> .30	> .75
1260	> 1270	> .30	> .75
1270	> 1280	> .30	> .75
1280	> 1290	> .30	> .75
1290	> 1300	> .30	> .75
1300	> 1310	> .30	> .75
1310	> 1320	> .30	> .75
1320	> 1330	> .30	> .75
1330	> 1340	> .30	> .75
1340	> 1350	> .30	> .75
1350	> 1360	> .30	> .75
1360	> 1370	> .30	> .75
1370	> 1380	> .30	> .75
1380	> 1390	> .30	> .75
1390	> 1400	> .30	> .75
1400	> 1410	> .30	> .75
1410	> 1420	> .30	> .75
1420	> 1430	> .30	> .75
1430	> 1440	> .30	> .75
1440	> 1450	> .30	> .75
1450	> 1460	> .30	> .75
1460	> 1470	> .30	> .75
1470	> 1480	> .30	> .75
1480	> 1490	> .30	> .75
1490	> 1500	> .30	> .75
1500	> 1510	> .30	> .75
1510	> 1520	> .30	> .75
1520	> 1530	> .30	> .75
1530	> 1540	> .30	> .75
1540	> 1550	> .30	> .75
1550	> 1560	> .30	> .75
1560	> 1570	> .30	> .75
1570	> 1580	> .30	> .75
1580	> 1590	> .30	> .75
1590	> 1600	> .30	> .75
1600	> 1610	> .30	> .75
1610	> 1620	> .30	> .75
1620	> 1630	> .30	> .75
1630	> 1640	> .30	> .75
1640	> 1650	> .30	> .75
1650	> 1660	> .30	> .75
1660	> 1670	> .30	> .75
1670	> 1680	> .30	> .75
1680	> 1690	> .30	> .75
1690	> 1700	> .30	> .75
1700	> 1710	> .30	> .75
1710	> 1720	> .30	> .75
1720	> 1730	> .30	> .75
1730	> 1740	> .30	> .75
1740	> 1750	> .30	> .75
1750	> 1760	> .30	> .75
1760	> 1770	> .30	> .75
1770	> 1780	> .30	> .75
1780	> 1790	> .30	> .75
1790	> 1800	> .30	> .75
1800	> 1810	> .30	> .75
1810	> 1820	> .30	> .75
1820	> 1830	> .30	> .75
1830	> 1840	> .30	> .75
1840	> 1850	> .30	> .75
1850	> 1860	> .30	> .75
1860	> 1870	> .30	> .75
1870	> 1880	> .30	> .75
1880	> 1890	> .30	> .75
1890	> 1900	> .30	> .75
1900	> 1910	> .30	> .75
1910	> 1920	> .30	> .75
1920	> 1930	> .30	> .75
1930	> 1940	> .30	> .75
1940	> 1950	> .30	> .75
1950	> 1960	> .30	> .75
1960	> 1970	> .30	> .75
1970	> 1980	> .30	> .75
1980	> 1990	> .30	> .75
1990	> 2000	> .30	> .75
2000	> 2010	> .30	> .75
2010	> 2020	> .30	> .75
2020	> 2030	> .30	> .75
2030	> 2040	> .30	> .75
2040	> 2050	> .30	> .75
2050	> 2060	> .30	> .75
2060	> 2070	> .30	> .75
2070	> 2080	> .30	> .75
2080	> 2090	> .30	> .75
2090	> 2100	> .30	> .75
2100	> 2110	> .30	> .75
2110	> 2120	> .30	> .75
2120	> 2130	> .30	> .75
2130	> 2140	> .30	> .75
2140	> 2150	> .30	> .75
2150	> 2160	> .30	> .75
2160	> 2170	> .30	> .75

Mouser Electronics

Authorized Distributor

Click to View Pricing, Inventory, Delivery & Lifecycle Information:

[Aptiv:](#)

[12089345](#)