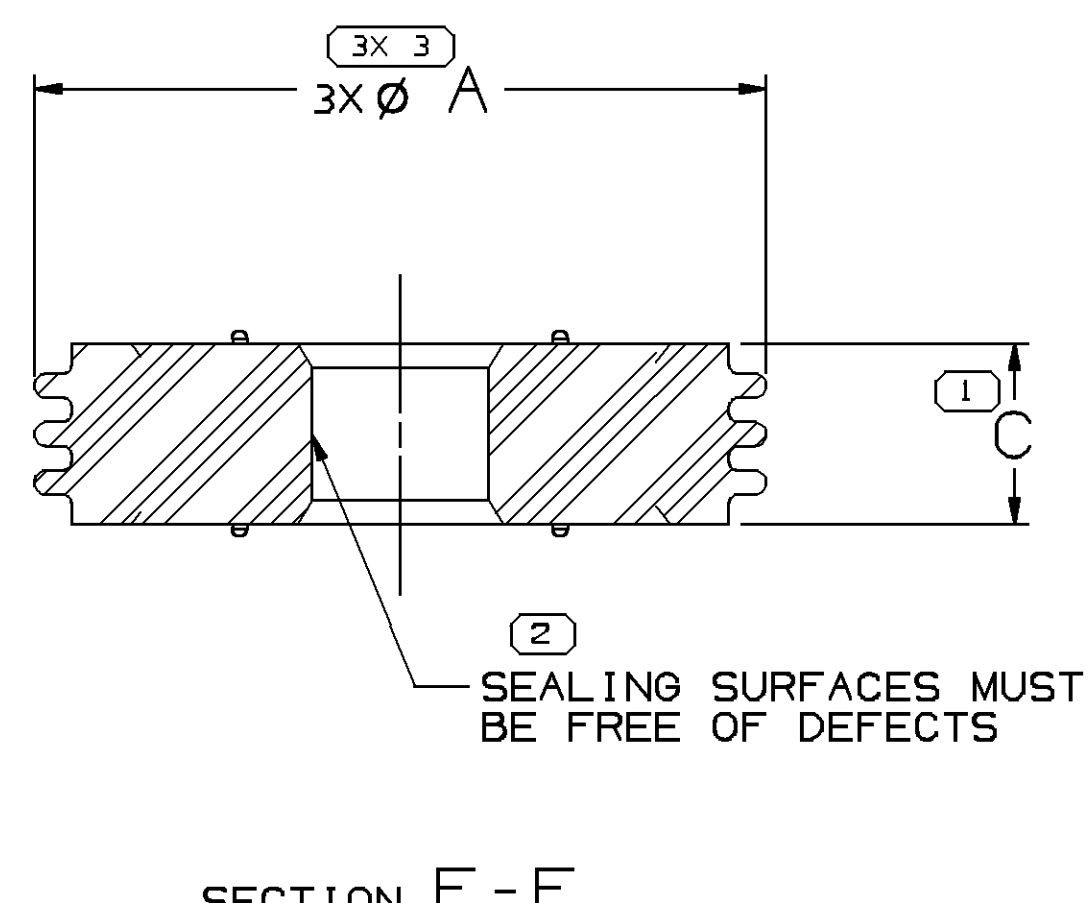
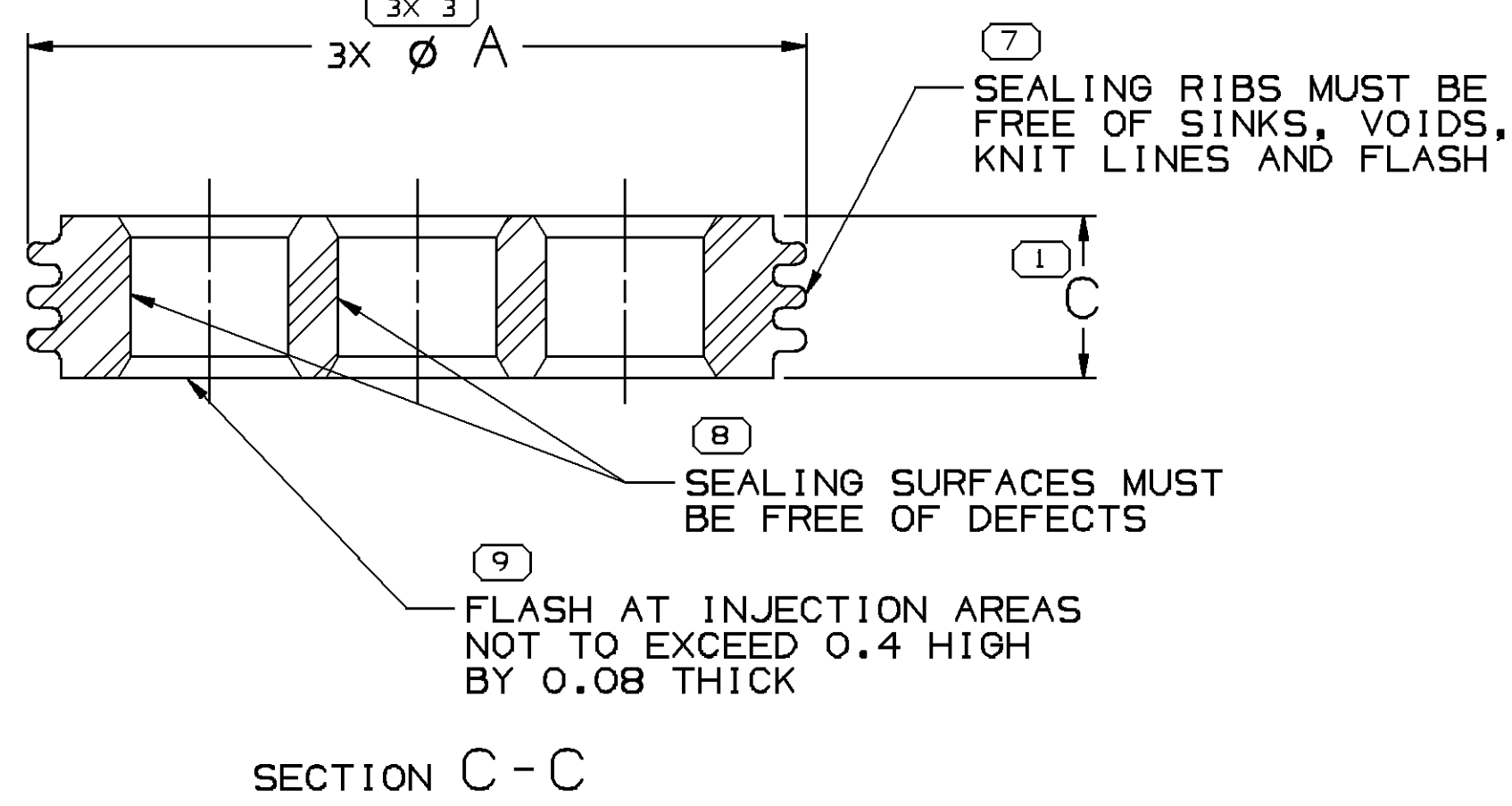
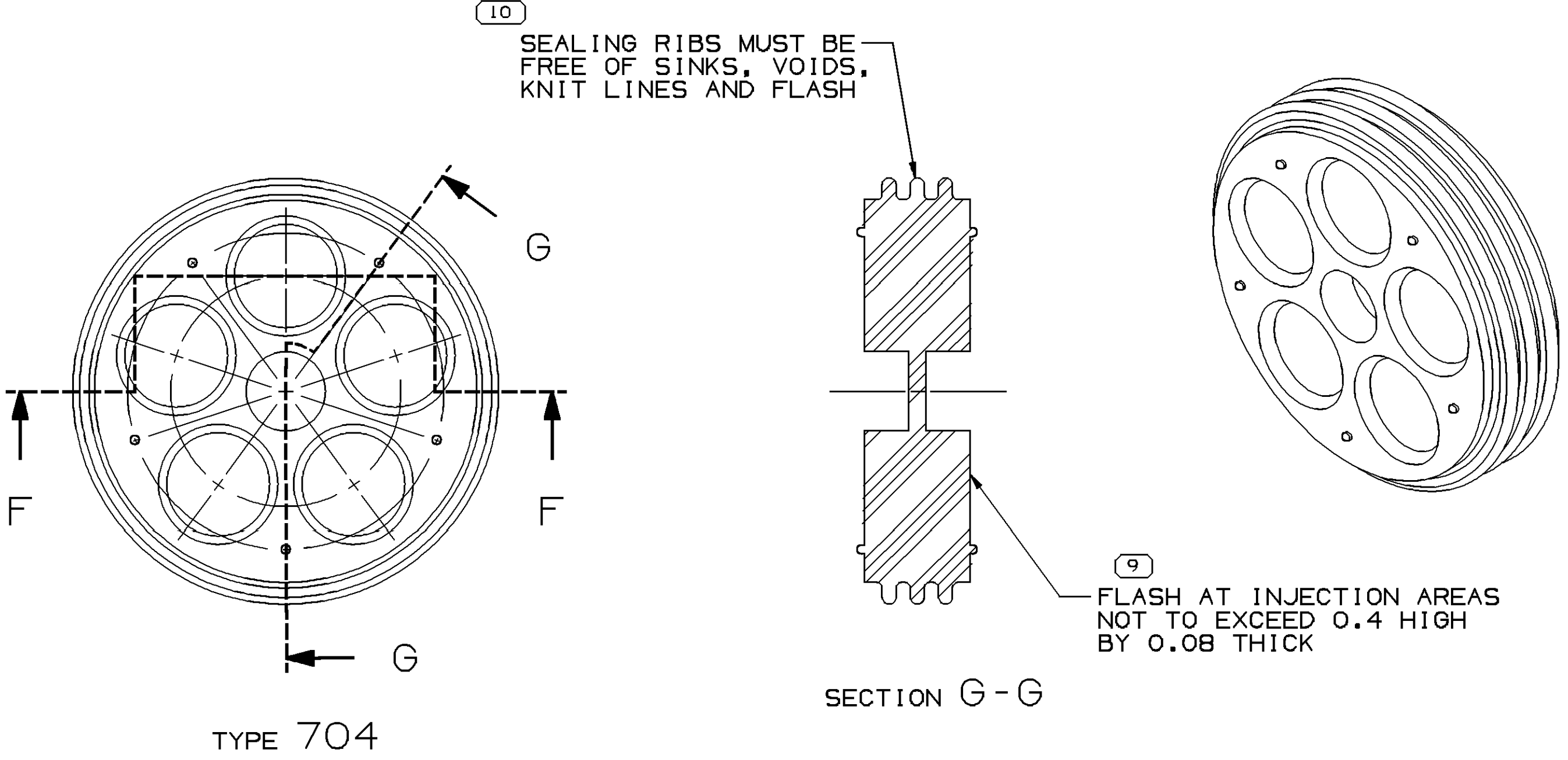
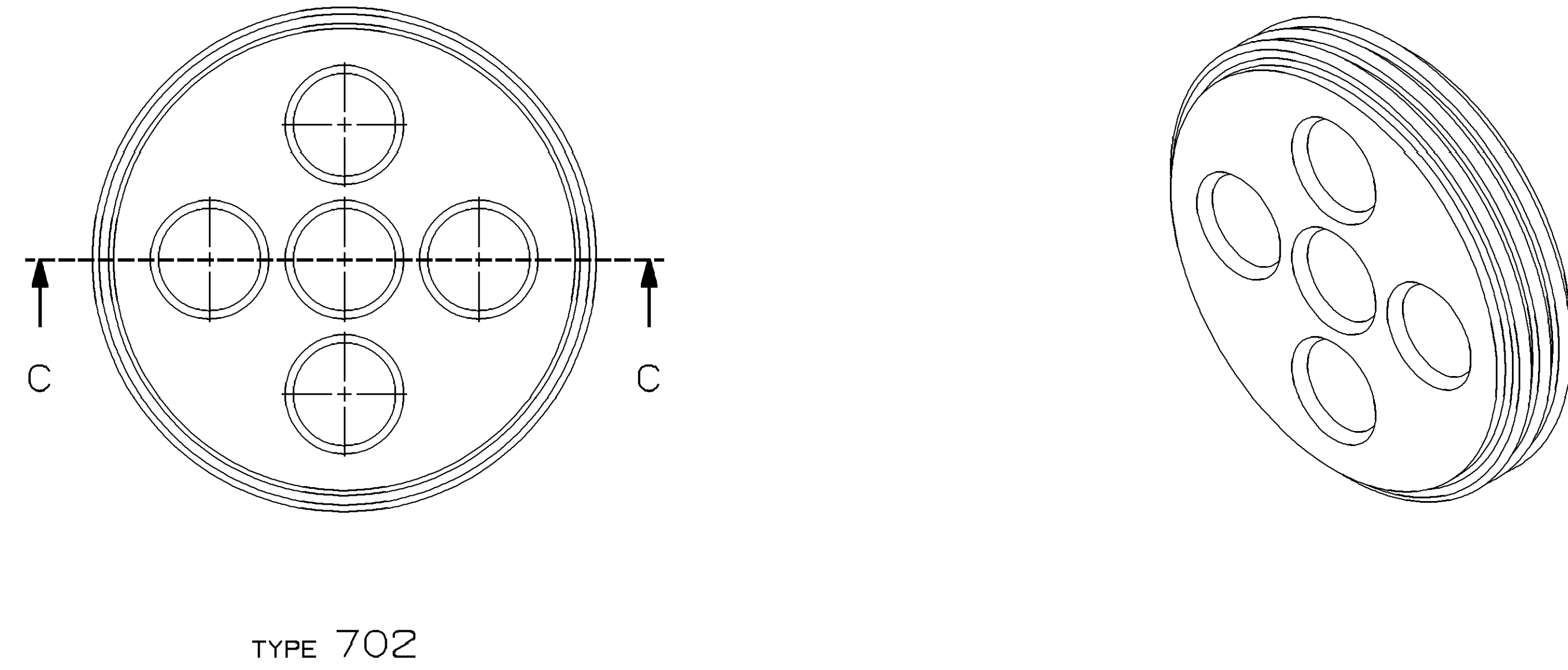
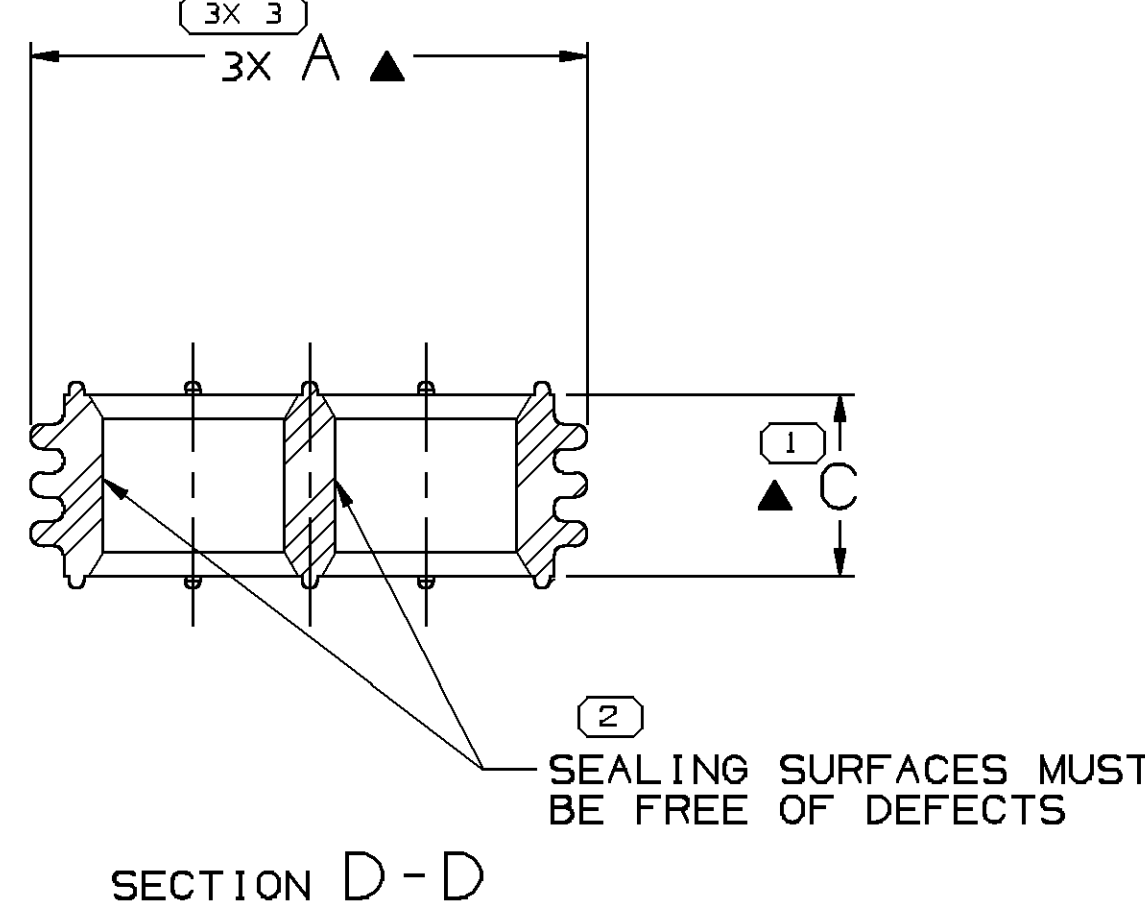
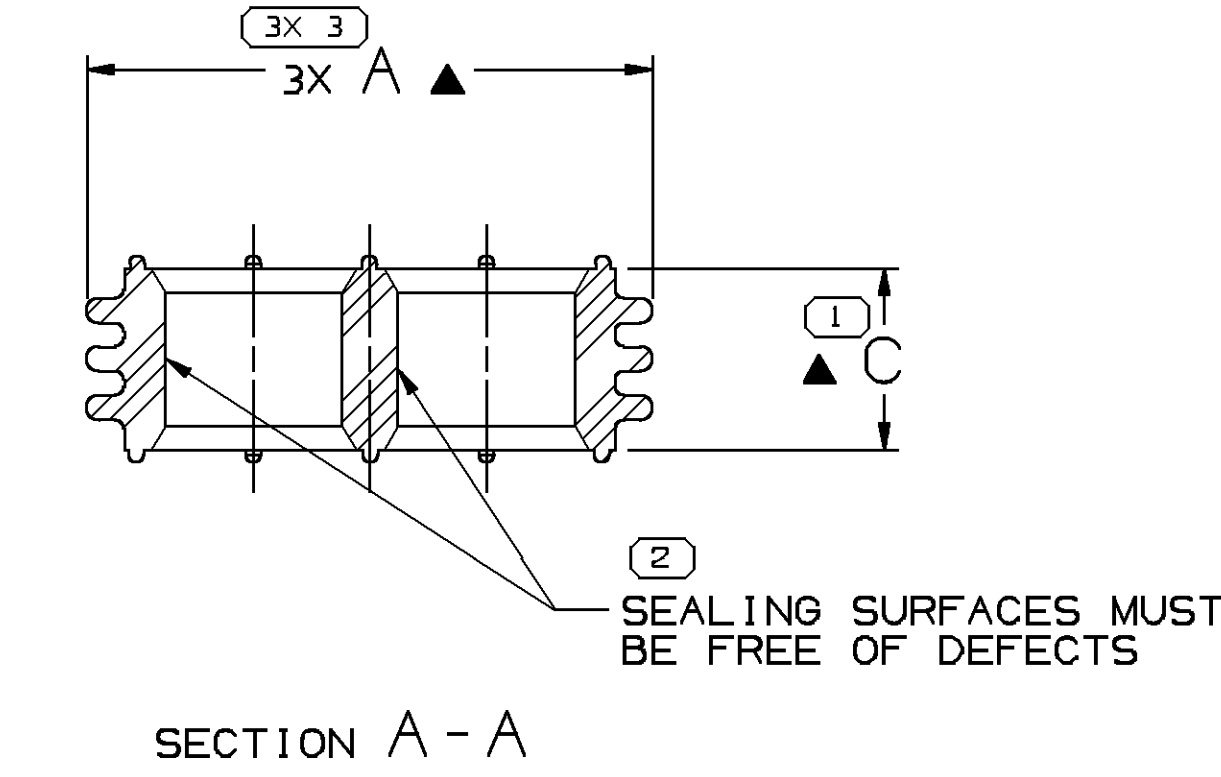
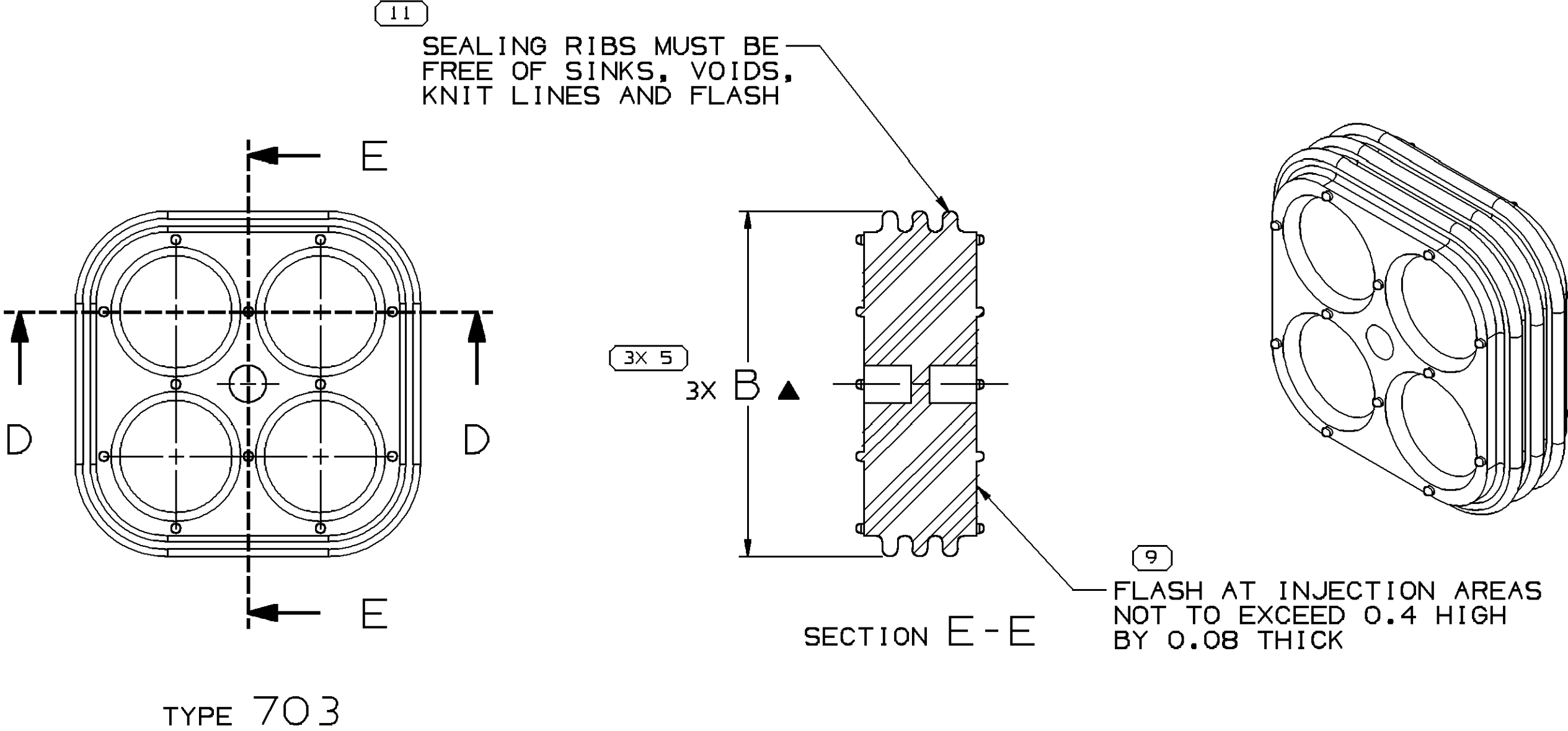
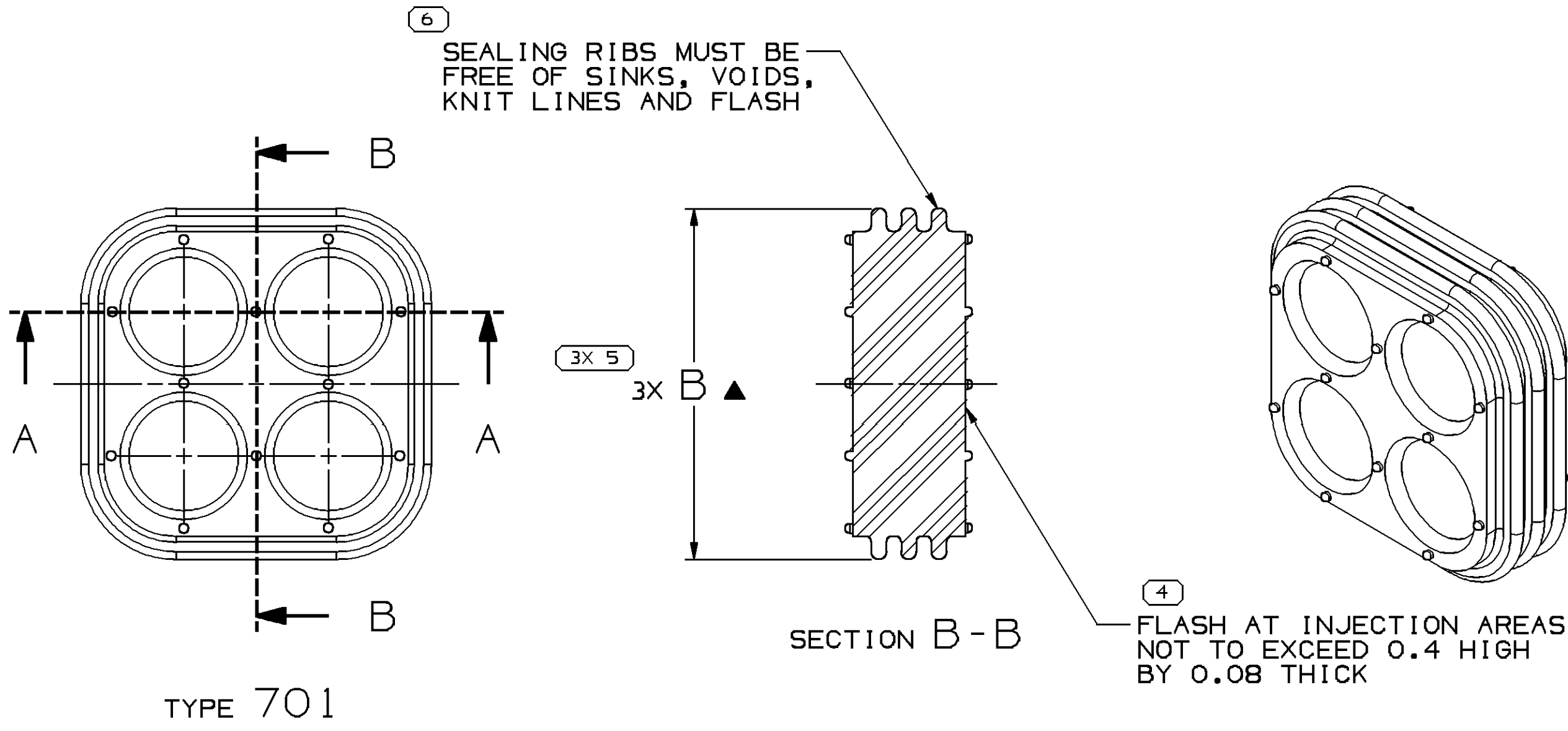


SYMBOL DEFINITION			
A DIMENSION WITHOUT AN INSPECTION REPORT SYMBOL DOES NOT REQUIRE INSPECTION. IT MAY BE CONTROLLED ON THE INDIVIDUAL COMPONENT DRAWING.		TOTAL NO OF INSPECTIONS REQUIRED	34
		LAST NO. USED	11

MISSING SYMBOLS		NO MISSING SYMBOL NUMBER	
		34	11

DATE		STG	REV	N/P	CHG	ZONE	REVISION HISTORY		AUTH	DR	APVD	APV2
23JL98		R	-	-	-	-	REDRAWN		980007	AUG	AUG	AUG
070C09		R	01	-	-	-	ALL ACTIVE PARTS - ADDED VOLUME COLUMN TO CHART		409033	ARC	JVM	DGL



- NOTES
- UNLESS OTHERWISE SPECIFIED AND/OR INDICATED:
DIMENSIONS ARE TO FACE OF VIEW SHOWN AND AUTOMATICALLY ROUNDED BY COMPUTER FOR INSPECTION (SEE MATH MODEL FOR PRECISE DIMENSIONS). FOR ALL OTHER DIMENSIONS NOT SHOWN BUT REQUIRED FOR TOOL BUILD, SEE MATH MODEL FOR PRECISE TOOL PATH DATA.
 - THIS PRODUCT IS NOT CATEGORIZED AS AN APPEARANCE ITEM, MINOR IMPERFECTIONS INCLUDING, BUT NOT LIMITED TO, FLOW MARKS, COLOR BLEMISHES, GATE VESTIGE, AND SOFT FLASH THAT DO NOT AFFECT THE FIT, FORM, OR FUNCTION OF THE PART ARE PERMISSIBLE PER DPNP-4.7-CS-01.
 - THIS PART IS CONTROLLED FOR AUTOMATIC FEEDING AS DENOTED ON DRAWING WITH ▲.
 - PARTS ARE TO BE PACKAGED IN SEALED PLASTIC BAGS, GROSS WEIGHT INCLUDING CARTON IS NOT TO EXCEED 34 POUNDS.

DIMENSIONAL RANGE (MM)		TOLERANCE	
FROM	TO	±	±
0	25	±0.13	±0.13
25	50	±0.25	±0.25
50	75	±0.38	±0.38
75	100	±0.51	±0.51
100	150	±0.64	±0.64
150	200	±0.76	±0.76
200	250	±0.89	±0.89
250	300	±1.02	±1.02
300	400	±1.27	±1.27

THIRD ANGLE PROJECTION		DO NOT SCALE	

DELPHI		DATE	
DELPHI PACKARD ELECTRICAL/ELECTRONIC ARCHITECTURE WARREN, OH			
DR		DATE	
APV01 PEDRO YABUR		02JN94	
APV02 D BRANTINGHAM		06JN94	
APV03 K D MURPHY		27JN94	
APV04			
APV05			
SUBSTANCES OF CONCERN AND RECYCLED CONTENT PER DELPHI (0344900)			
DRAWING NUMBER		12077524	
DRAWING NAME		TAXI SEAL CONN	
SIZE		SCALE	
A0		4:1	
FRAME NO		SHEET NO	
1 OF 1		7 OF 7	
STG		REV	
R		01	

PART NO	REV	N/P	STATUS	MATERIAL SPECIFICATION AND COLOR	TYPE	MATING CONNECTOR	REPLACED BY	VOLUME
12034278	B1	-	-	SILICONE METHYL/VINYL GREEN	704	12034277	-	1.511
12020220	A1	-	-	SILICONE METHYL/VINYL GREEN	703	12015051	-	0.933
12010891	C1	-	-	SILICONE METHYL/VINYL GREEN	702	12010890	-	2.687
12010162	E	-	OBSELETE	SILICONE METHYL/VINYL GREEN	701	12010158	-	1.011

Mouser Electronics

Authorized Distributor

Click to View Pricing, Inventory, Delivery & Lifecycle Information:

[Aptiv:](#)
[12034278](#)