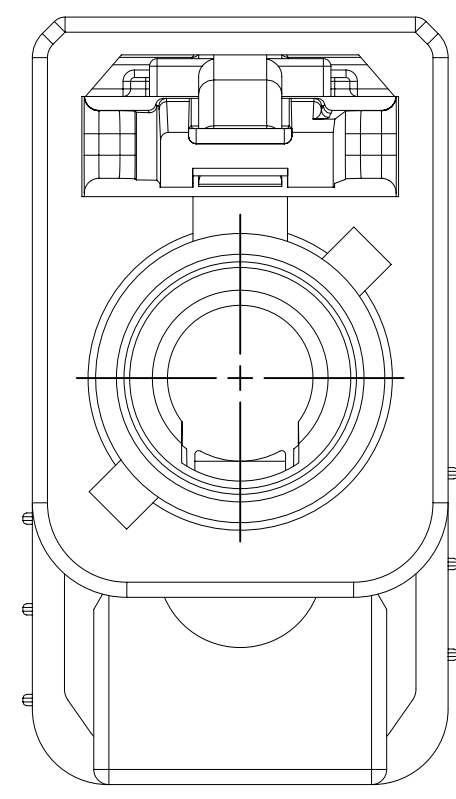
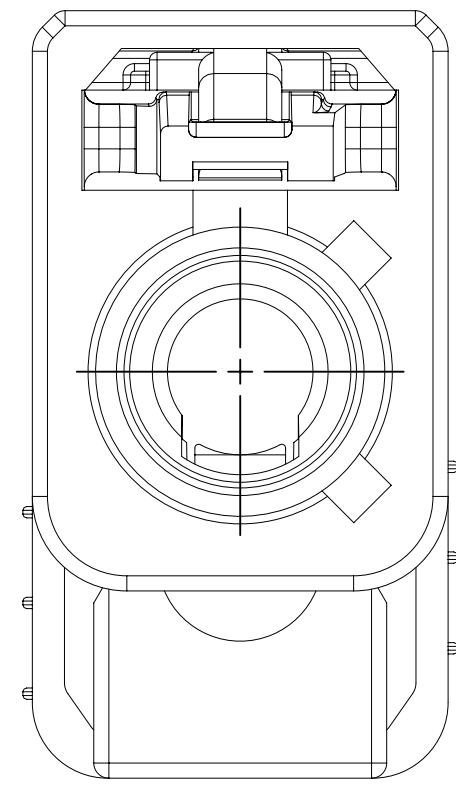


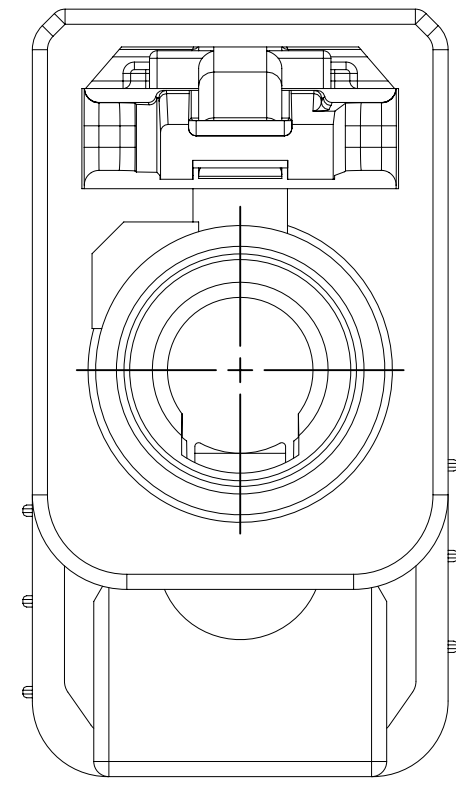
TYPE 102  
SAME AS TYPE 101  
EXCEPT AS SHOWN



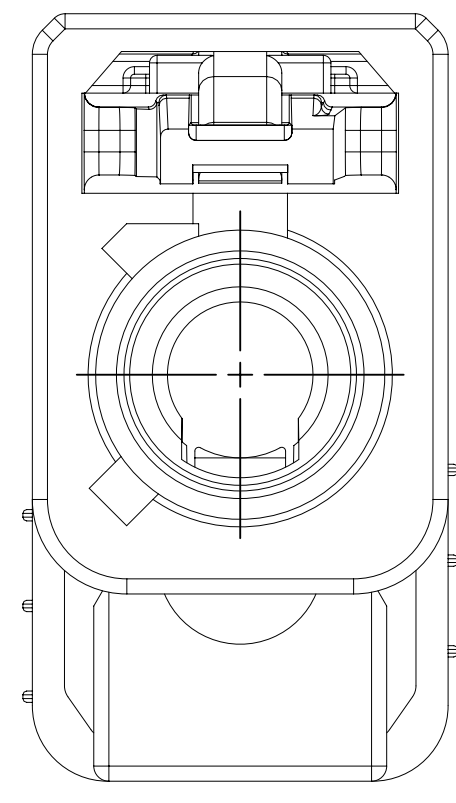
TYPE 103  
SAME AS TYPE 101  
EXCEPT AS SHOWN



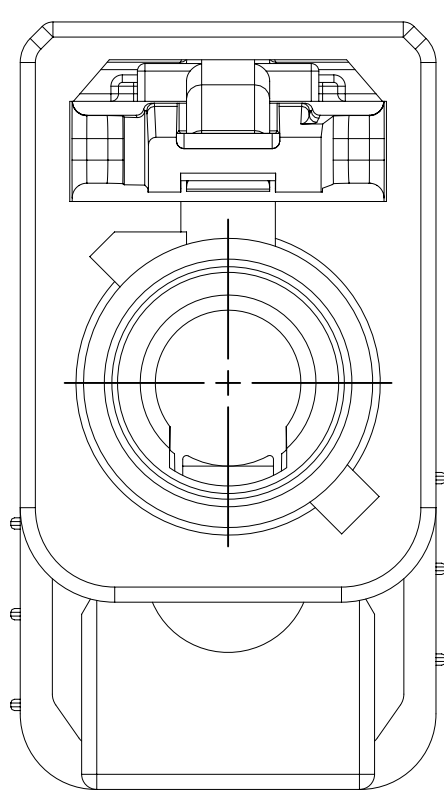
TYPE 104  
SAME AS TYPE 101  
EXCEPT AS SHOWN



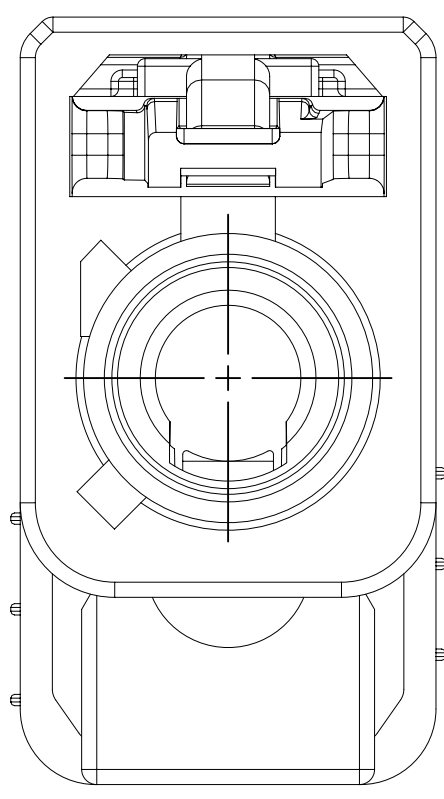
TYPE 105  
SAME AS TYPE 101  
EXCEPT AS SHOWN



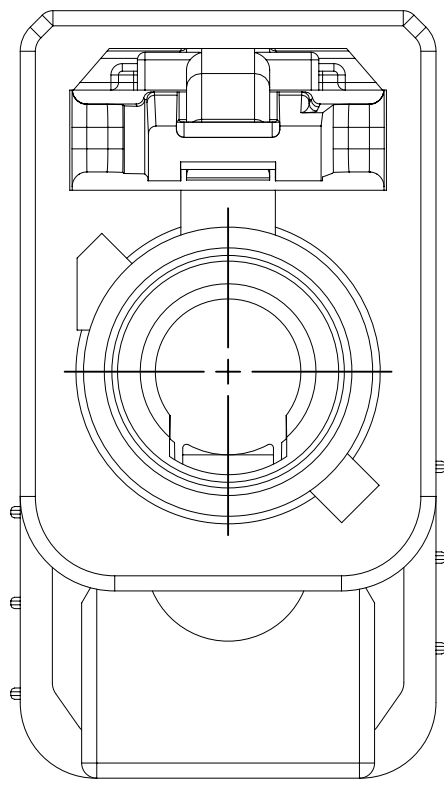
TYPE 106  
SAME AS TYPE 101  
EXCEPT AS SHOWN



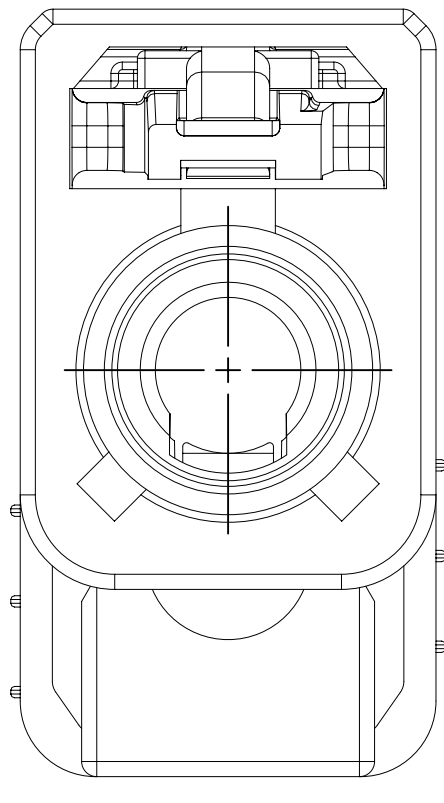
TYPE 107  
SAME AS TYPE 101  
EXCEPT AS SHOWN



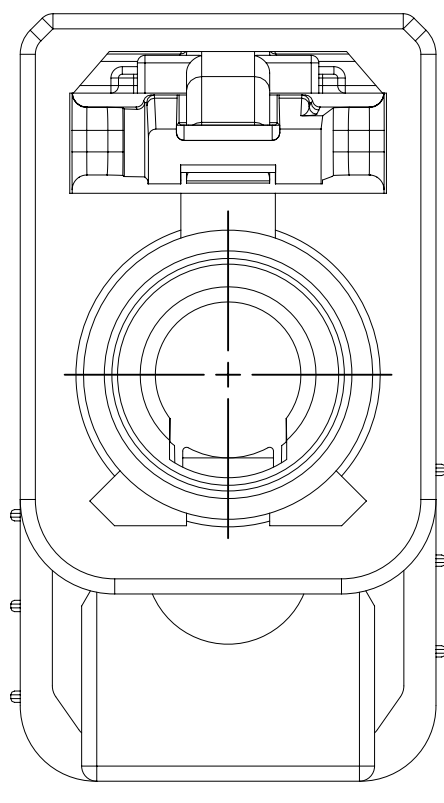
TYPE 108  
SAME AS TYPE 101  
EXCEPT AS SHOWN



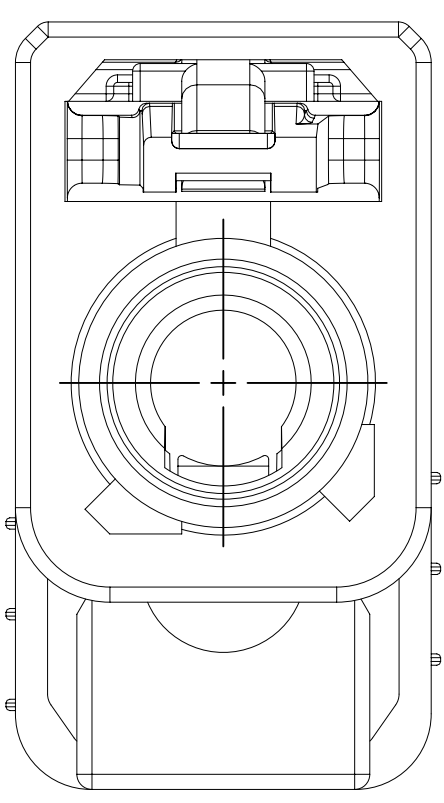
TYPE 109  
SAME AS TYPE 101  
EXCEPT AS SHOWN



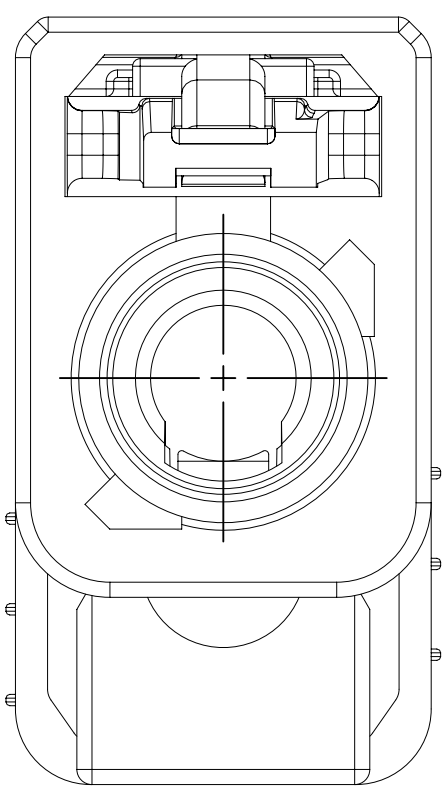
TYPE 110  
SAME AS TYPE 101  
EXCEPT AS SHOWN



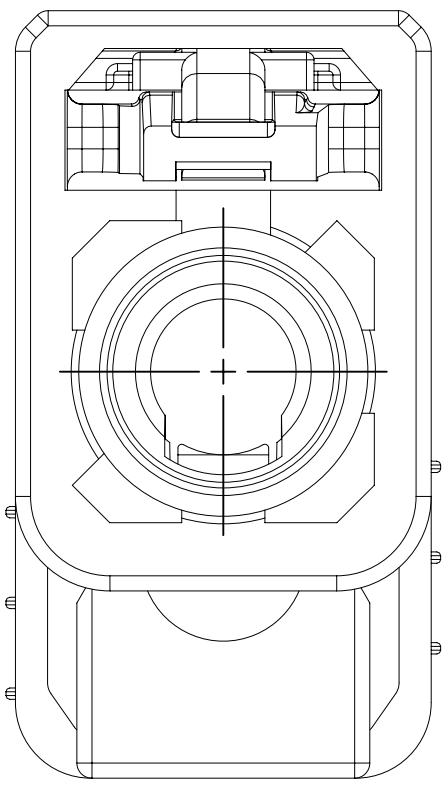
TYPE 111  
SAME AS TYPE 101  
EXCEPT AS SHOWN



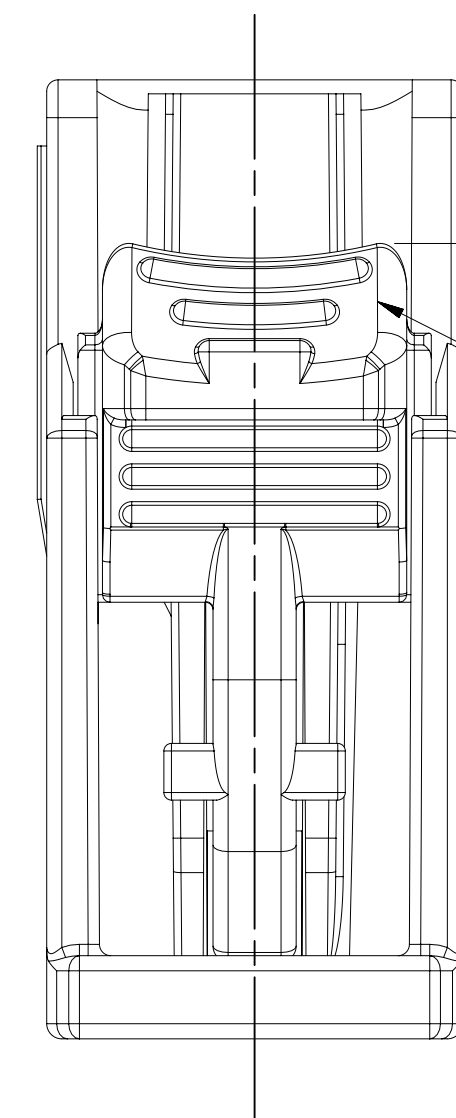
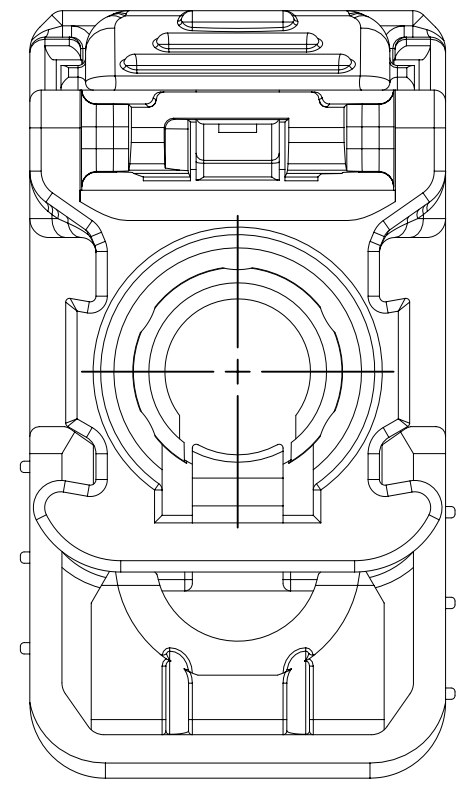
TYPE 112  
SAME AS TYPE 101  
EXCEPT AS SHOWN



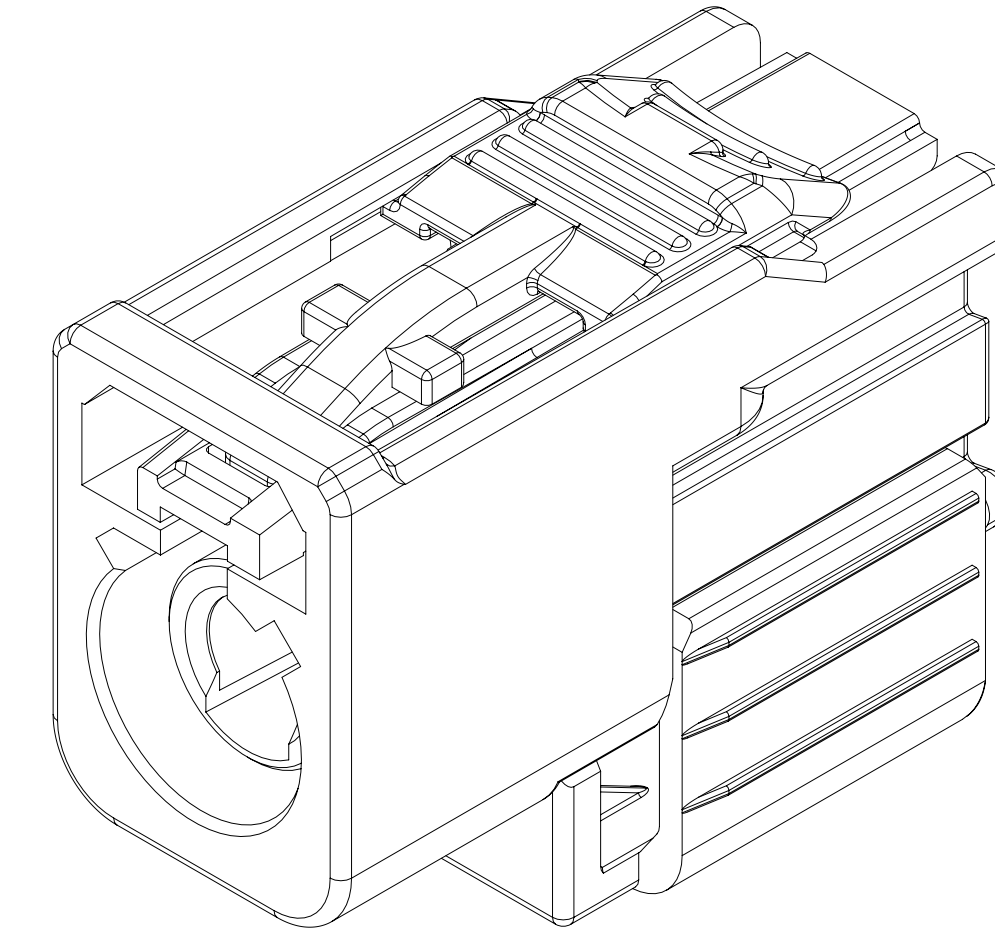
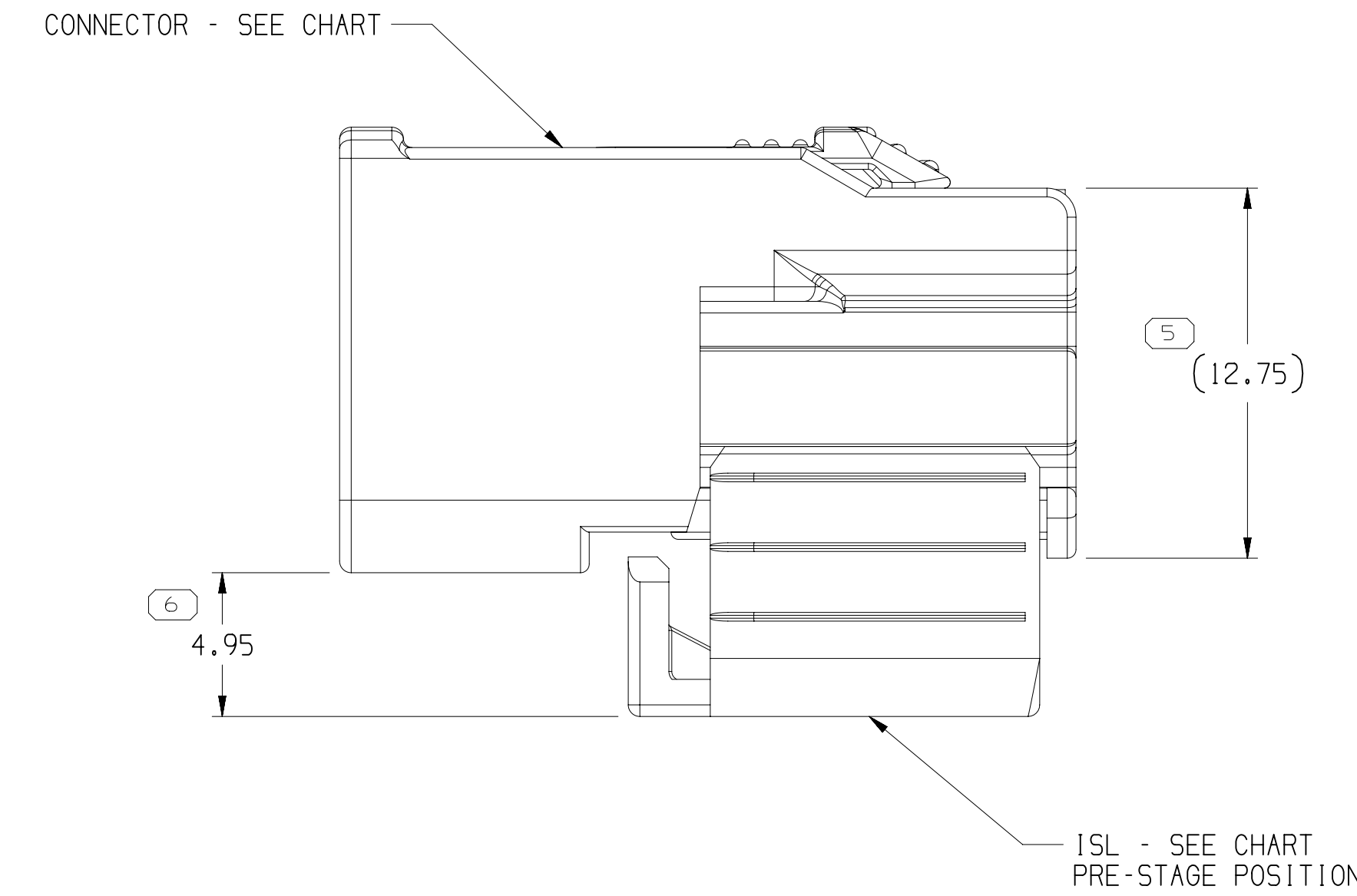
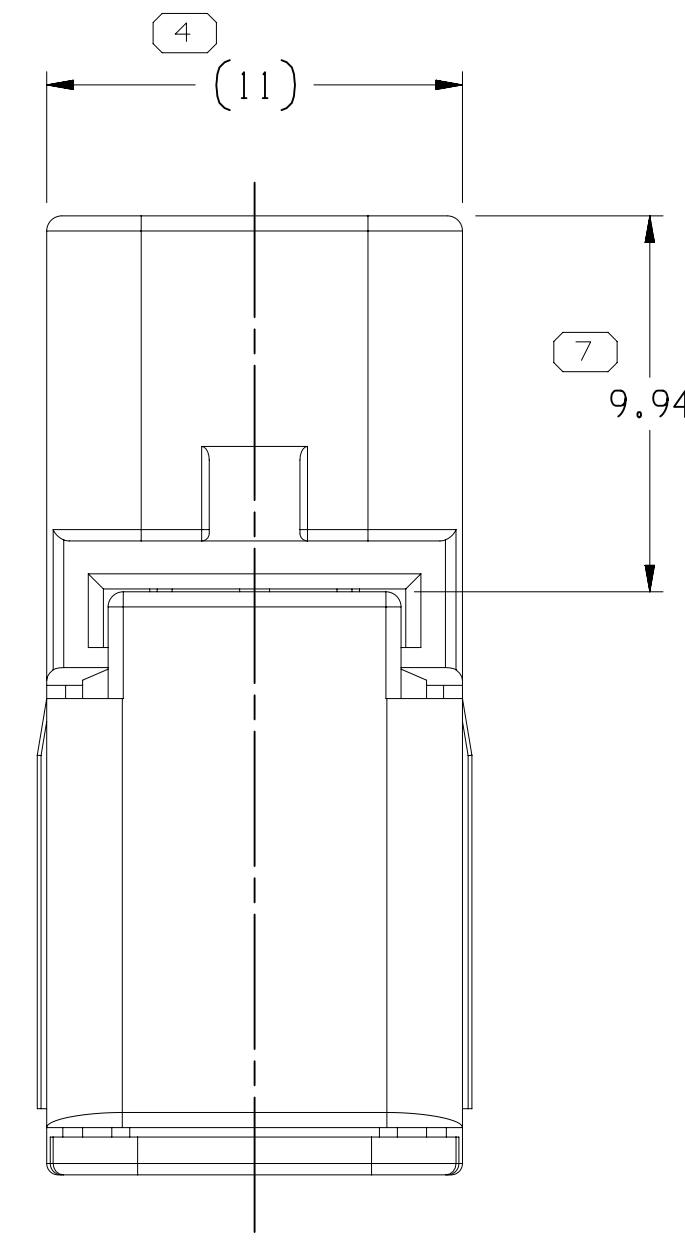
TYPE 113  
SAME AS TYPE 101  
EXCEPT AS SHOWN



TYPE 114  
SAME AS TYPE 101  
EXCEPT AS SHOWN



TYPE 101



A DIMENSION WITHOUT AN INSPECTION REPORT SYMBOL  
○ DOES NOT REQUIRE INSPECTION. IT MAY BE  
CONTROLLED ON THE INDIVIDUAL COMPONENT DRAWING.

TOTAL NO. OF  
INSPECTIONS  
REQUIRED

MISSING SYMBOLS  
NO MISSING  
SYMBOL NUMBER

DWG STATUS			ZONE		REVISION HISTORY		AUTH		DR APPROV	
DATE	STO	REV	N/P	CHK						
20JUN16	R	01	-	-	ALL PARTS - RELEASED PART DRAWING		433406	JRM	GMT	GMT
07MAY17	R	02	-	-	ALL PARTS - (25.37) WAS (25.61) - 4.33 WAS 5.41 - 5.14 WAS 5.94 & 5.94 WAS 10.18 AND UPDATED CPA, ISL & CONNECTOR TO LATEST REVISION		435901	JRM	JRM	JRM
31AUG17	R	03	-	-	"SHT 1 OF 4" WAS "SHT 1 OF 2"		437650	AHM	M.P.M.P	M.P.M.P
02OCT17	R	04	-	-	ALL PARTS - UPDATED CONNECTOR, ISL & CPA TO LATEST REVISION AND DIM 4.95 WAS 5.14		437926	ESC	ESC	M.P.M.P
15AUG18	R	05	-	-	33340319 - CPA WAS 332242531 ALL PARTS - ADDED "CONNECTOR COLOR" COLUMN & "CPA COLOR" COLUMN AND UPDATED "NON APPEARANCE ITEM" NOTE		440536	LXA	JAA	M.P.M.P
21MAY19	R	06	-	-	ALL PARTS - UPDATED PART AVAILABILITY		442439	JLL	JAA	M.P.M.P

NOTES

- UNLESS OTHERWISE SPECIFIED AND/OR INDICATED:  
DIMENSIONS ARE TO FACE OF VIEW SHOWN AND  
AUTOMATICALLY ROUNDED BY COMPUTER FOR INSPECTION  
(SEE MATH MODEL FOR PRECISE DIMENSIONS). FOR ALL  
OTHER DIMENSIONS NOT SHOWN BUT REQUIRED FOR TOOL  
BUILD, SEE MATH MODEL FOR PRECISE TOOL PATH DATA.
- THIS PRODUCT IS NOT CATEGORIZED AS AN APPEARANCE ITEM. MINOR  
IMPERFECTIONS INCLUDING, BUT NOT LIMITED TO, FLOW MARKS, COLOR  
BLEMISHES, BATE VESTIGE, AND SOFT FLASH THAT DO NOT AFFECT THE  
FIT, FORM, OR FUNCTION OF THE PART ARE PERMISSIBLE PER ENP-4-3.CS.01.EN.
- FOR APPLICATION DATA SEE THE INDIVIDUAL APPLICATION DRAWINGS.

PART NO	REV	N/P	TYPE	KEY OPTION	CONNECTOR	COLOR	ISL	CPA	COLOR
33340322	03	AB	114	Z	33253352	BLUE WATER	33233947	33224253	RED LIGHT
33340321	03	AB	113	N	33253348	GREEN LIGHT	33233947	33224253	RED LIGHT
33340320	03	AB	112	M	33253344	ORANGE LIGHT	33233947	33224253	RED LIGHT
33340319	03	AB	111	L	33253339	RED LIGHT	33233947	33224253	RED LIGHT
33340318	03	AB	110	K	33253335	YELLOW	33233947	33224253	RED LIGHT
33340317	03	AB	109	I	33253330	BEIGE	33233947	33224253	RED LIGHT
33340316	03	AB	108	H	33253326	VIOLET HEATHER	33233947	33224253	RED LIGHT
33340315	03	AB	107	G	33253322	BLUE GRAY	33233947	33224253	RED LIGHT
33340314	03	AB	106	F	33253319	BROWN	33233947	33224253	RED LIGHT
33340313	03	AB	105	E	33253314	GREEN	33233947	33224253	RED LIGHT
33340312	03	AB	104	D	33253310	VIOLET CLARET	33233947	33224253	RED LIGHT
33340311	03	AB	103	C	33253305	BLUE DARK	33233947	33224253	RED LIGHT
33340310	03	AB	102	B	33253301	CREAM	33233947	33224253	RED LIGHT
33340309	03	AB	101	A	33233941	BLACK	33233947	33224253	RED LIGHT

DRAWING NUMBER									
33340308									
SIZE	SCALE	FRAME NO	SHEET NO	TOTAL SHEETS	REV	N/P	DATE	DATE	DATE
A1x3	5:1	2	OF 2	1	OF 4	06	1	-	-

CONNECTION SYSTEMS	
DATE	DATE
20JUN16	20JUN16
20JUN16	20JUN16
20JUN16	20JUN16

•APTIV•	
DATE	DATE
20JUN16	20JUN16
20JUN16	20JUN16
20JUN16	20JUN16

33340308

# Mouser Electronics

Authorized Distributor

Click to View Pricing, Inventory, Delivery & Lifecycle Information:

[Aptiv:](#)

[33340313](#) [33340310](#) [33340312](#) [33340314](#) [33340315](#) [33340316](#) [33340319](#) [33340321](#) [33340322](#) [33340318](#)