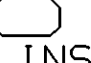
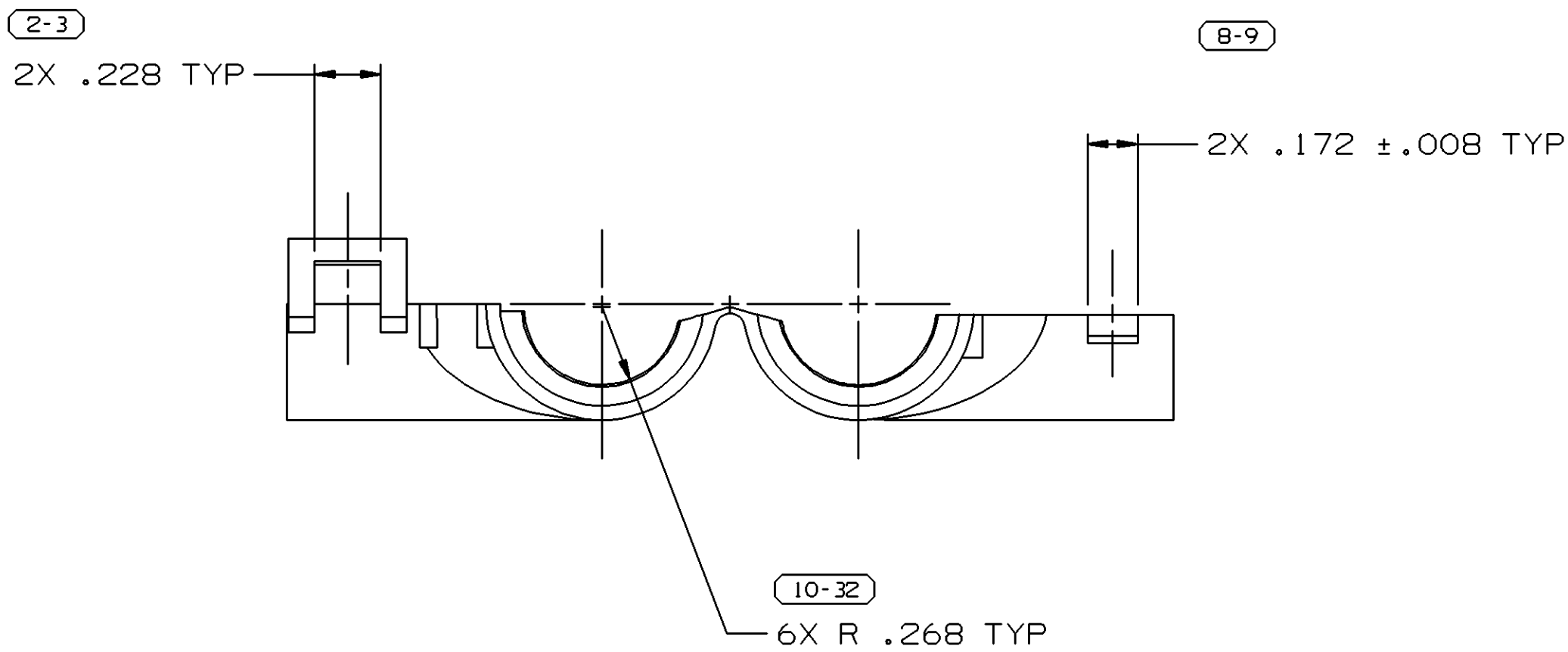
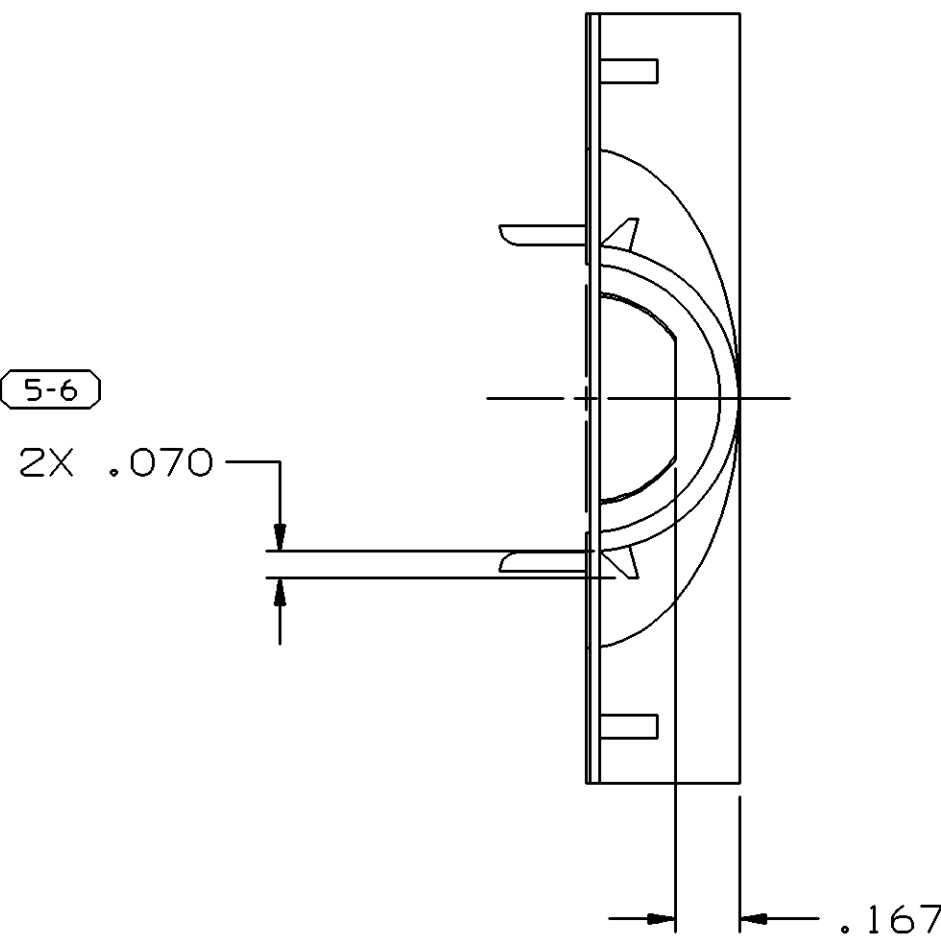
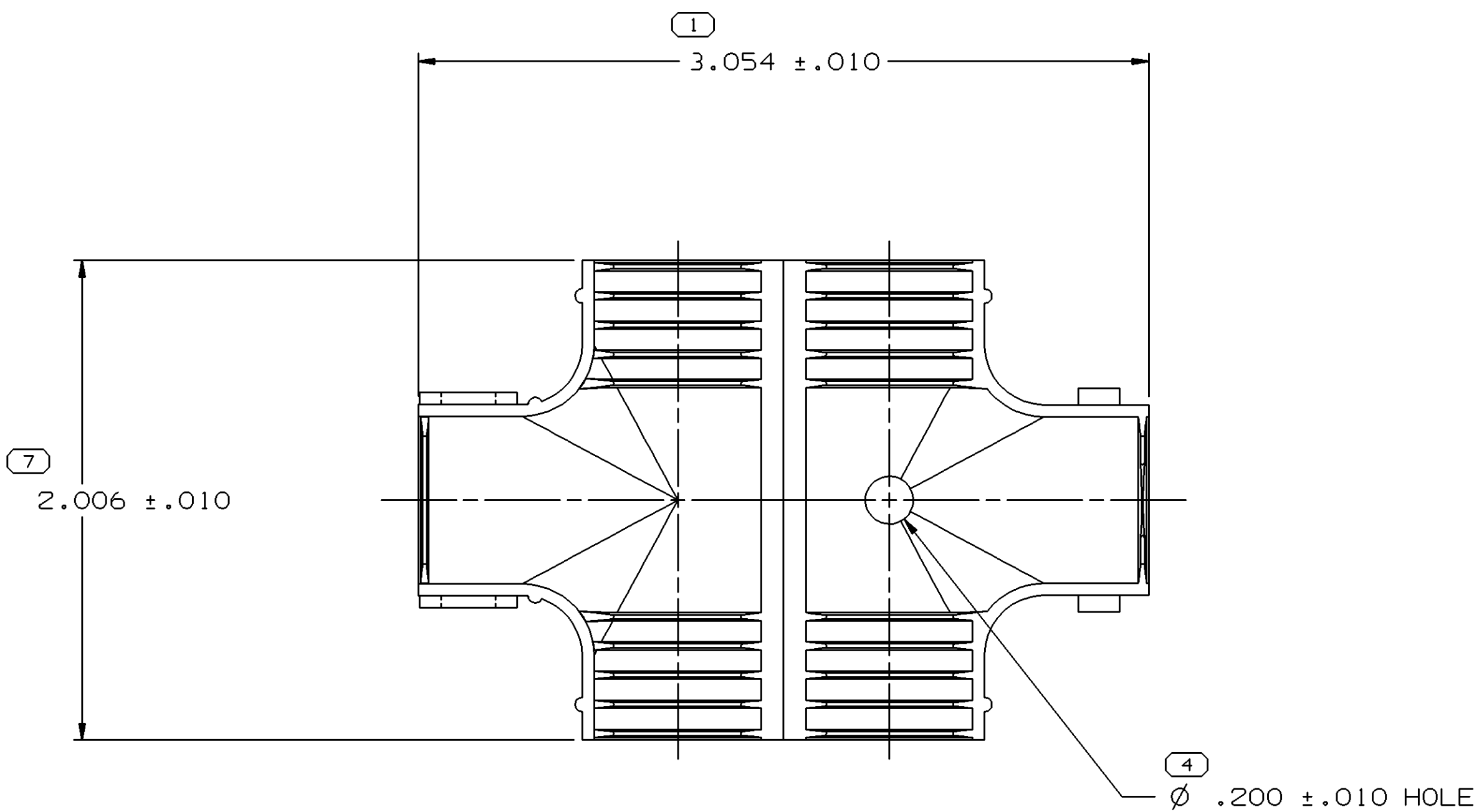


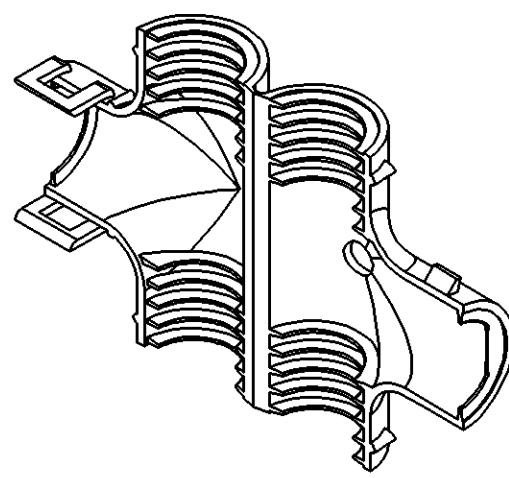
SYMBOL DEFINITION			MISSING NUMBERS
A DIMENSION WITHOUT AN INSPECTION REPORT SYMBOL  DOES NOT REQUIRE INSPECTION. IT MAY BE CONTROLLED ON AN INDIVIDUAL COMPONENT DRAWING.	TOTAL NO. OF SYMBOLS ON DRAWING	7	
	LAST NO. USED	32	

DWG STATUS					ZONE	REVISION HISTORY		AUTH	DR	APVD 1	APVD 2
DATE	STG	REV	N/P	CHG		Cleared REV COL & REDRAWN TO PD		000009	APV	FRG	
07N000	R	D2	-	-		MAT'L SPEC WAS R0061354 AND ADDED NOTES 3 & 4		262143	RTV	JVM	EST
09DE04	R	05	-	-							

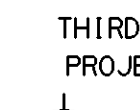
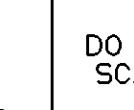
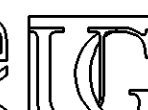


NOTES

- UNLESS OTHERWISE SPECIFIED AND/OR INDICATED: DIMENSIONS ARE TO FACE OF VIEW SHOWN AND AUTOMATICALLY ROUNDED BY COMPUTER FOR INSPECTION (SEE MATH MODEL FOR PRECISE DIMENSIONS). FOR ALL OTHER DIMENSIONS NOT SHOWN BUT REQUIRED FOR TOOL BUILD, SEE MATH MODEL FOR PRECISE TOOL PATH DATA.
- FOR USE ON .406 OR .493 I.D. CONVOLUTED CONDUIT.
- MATERIAL RECYCLING CODE PER ISO 11469. (2.3)X(0.1) CHARACTERS AS SHOWN TO BE LOCATED ON ANY EXTERIOR SURFACE. OPTIONAL CONSTRUCTION TO BE NO MATERIAL RECYCLING CODE.
- (2.3)X(0.1) DELPHI CORPORATE BRAND TO BE LOCATED ON ANY EXTERIOR SURFACE, PREFERABLY VISIBLE AT FINAL ASSEMBLY. OPTIONAL CONSTRUCTION TO BE "PED" OR NO LOGO.



PROCESS SENSITIVE DIMENSION			
DIMENSIONS ENCLOSED IN () INDICATE REFERENCE DIMENSIONS AND NO TOLERANCE LIMITS ARE ESTABLISHED			
DIMENSIONAL RANGE (IN)	CHART	H	
FROM 0	>.750	>1.250	>2.750
TO .750	1.250	2.750	4.000
TOLERANCE UNLESS OTHERWISE SPECIFIED			
±.005	±.010	±.012	±.016
ANGULAR TOLERANCE ±2°			

DWG TYPE		PART DRAWING	
STYLE			
VOLUME (CM³) 5.668		DISTR CODE D	
UNLESS OTHERWISE SPECIFIED			
THIS DOCUMENT IS IN ACCORDANCE WITH ASME Y14.5M-1994 AS AMENDED BY THE GM GLOBAL DIMENSIONING AND TOLERANCING ADDENDUM-2001. SEPARATE PATTERNS OF FEATURES MAY BE GAGED SEPARATELY REGARDLESS OF DATUM REFERENCES.			
ALL DIMENSIONS ARE IN INCHES			
REFERENCE			
THIRD ANGLE PROJECTION 		DO NOT SCALE USE MATH DATA  	

DELPHI					
DELPHI PACKARD ELECTRIC SYSTEMS WARREN, OH					
DR				DATE	
APVD1 E. J. TOLNAR				02MR71	
APVD2 HUBBARD				02MR71	
APVD3 GHIRARDI				03MR71	
APVD4					
APVD5					
SUBSTANCES OF CONCERN AND RECYCLED CONTENT PER DELPHI 10949001					
MATERIAL M2097001 PP 1M BLK					
DRAWING NAME					
COND FITTING TEE BLK					
DRAWING NUMBER					
08905798					
SIZE	SCALE	FRAME NO	SHEET NO	STG	REV
A1	2:1	1 OF 1	1 OF 1	R	05
					N/P

Mouser Electronics

Authorized Distributor

Click to View Pricing, Inventory, Delivery & Lifecycle Information:

[Aptiv:](#)

[08905798](#)