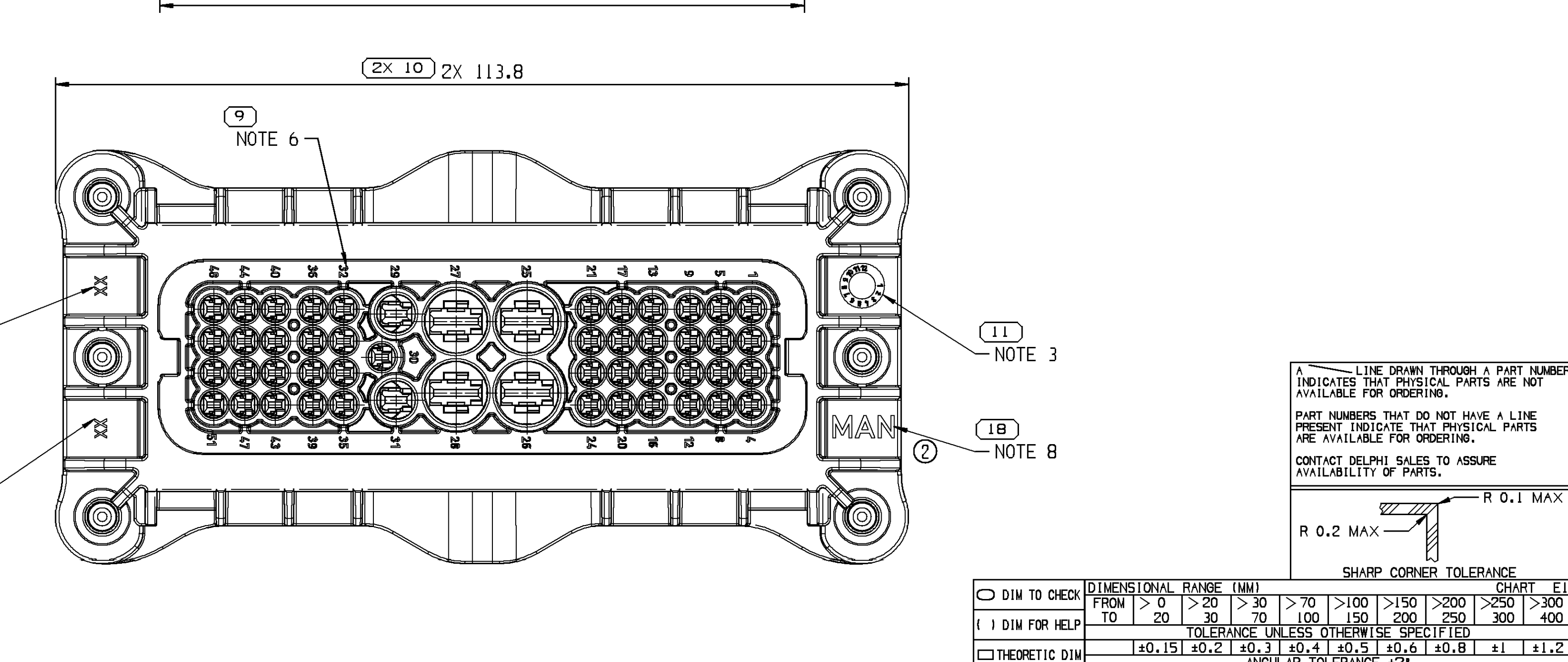
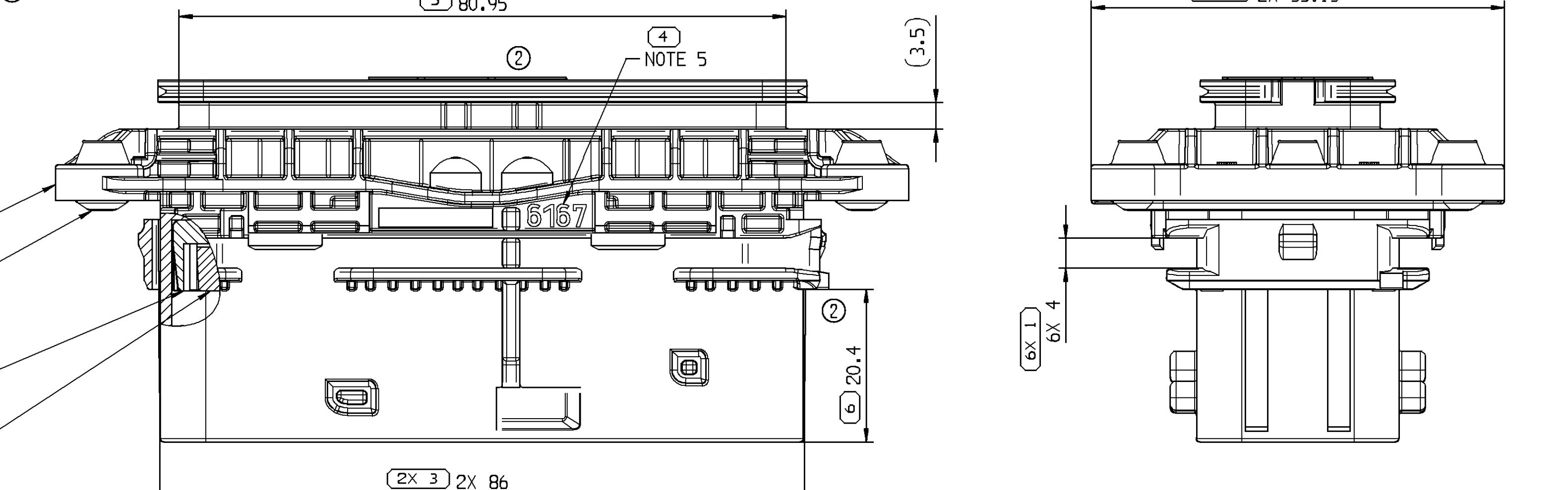
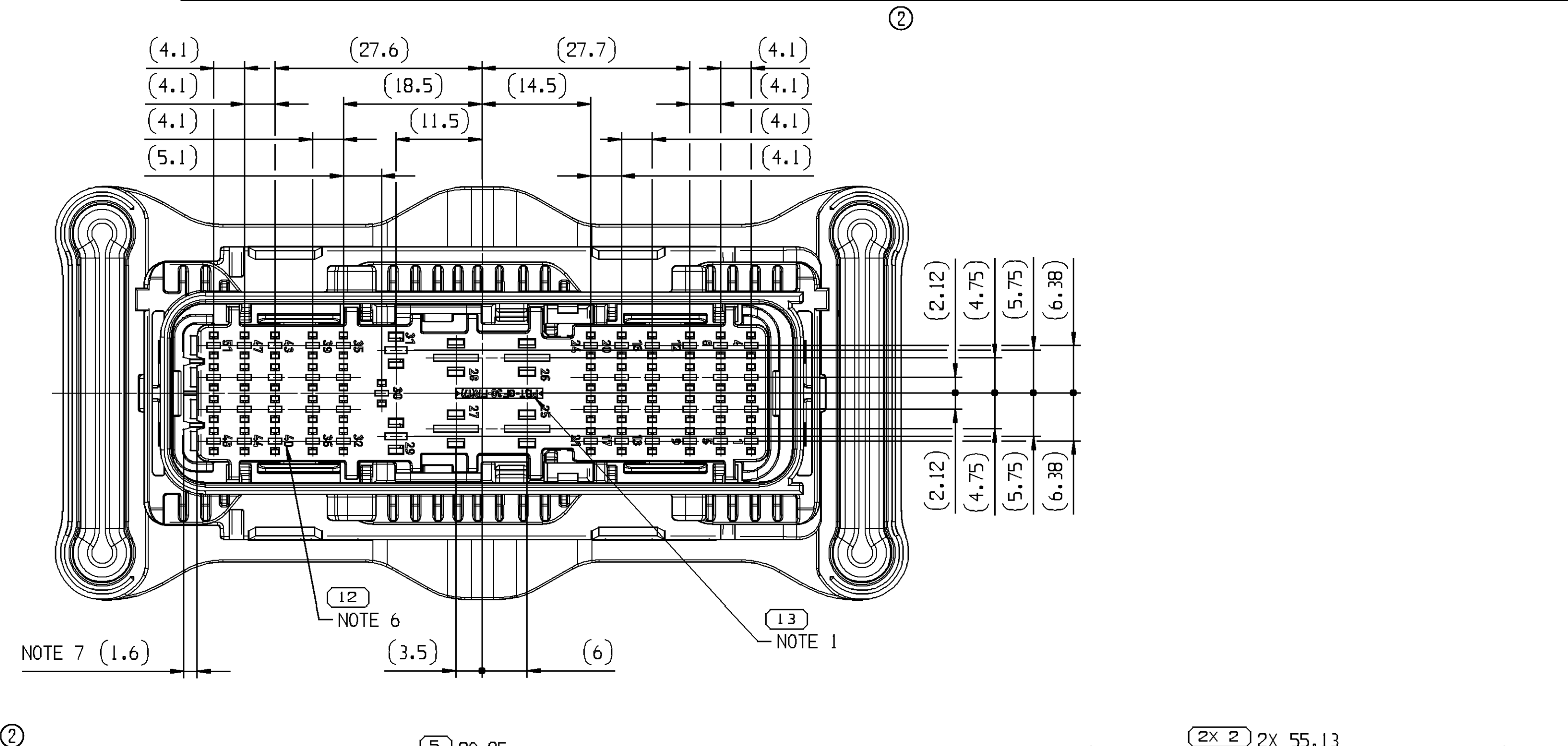
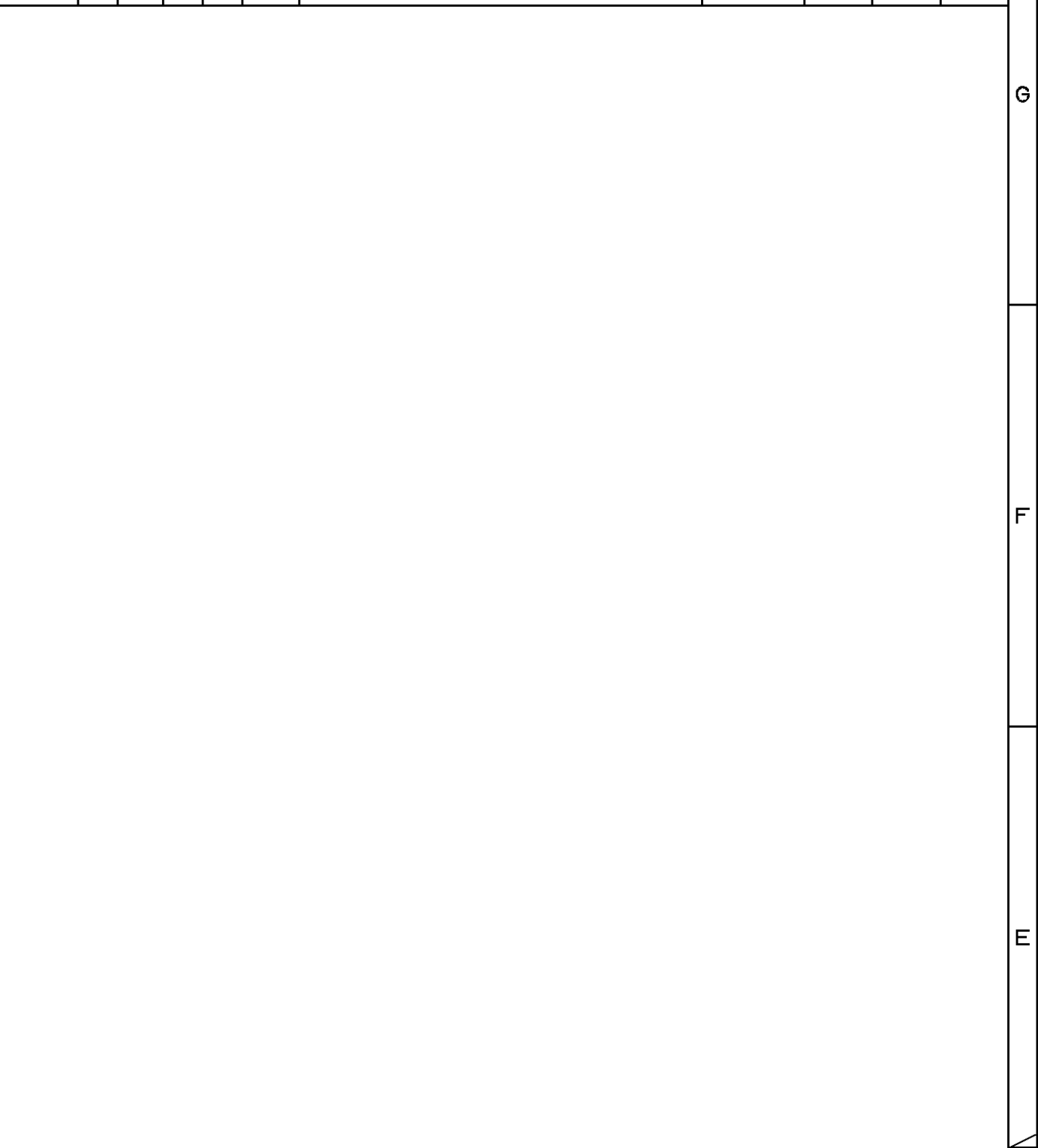


NOTES	
-	ASSEMBLY INSTRUCTION: 33253649-CUS75-S01
-	MATING PARTS: - FEMALE CONNECTOR 51WAY ASM DWG-NO.: 33254110 - FIXING SLIDE DWG-NO.: 33253571 - CAP 90° DWG-NO.: 33253579 - CAP 180° DWG-NO.: 33253576
-	MATING CONTACT SYSTEM: - 1.5 WITH WIRE CROSS SECTION: 0.35 - 1.5MM² HAND CRIMP TOOLS: 0784-44103, 0784-45103 - 2.8 WITH WIRE CROSS SECTION: 0.2 - 2.5MM² HAND CRIMP TOOLS: 6 520 04 06, 6 520 04 07 - 6.3 WITH WIRE CROSS SECTION: 0.5 - 6.0MM²
-	WORKING TEMPERATURE RANGE: -40° C - +130° C
-	SEALING IP CLASS: 6K9K, X6K (COMPLETE ASSEMBLY INCLUDING COVERS)
1	MATERIAL NAME ACCORDING TO VDA 260
2	TOOL CAVITY NUMBER
3	DATE INSERT SIMILAR FIRM OPITZ Ø 6; HAS TO BE THE MANUFACTURING DATE
4	INDEX REPLACEMENT INSERT
5	CUSTOMER NUMBER H=3 MM, FORMAT ACCORDING TO DIN 1451-3, TYPEFACE 1, FONT E
6	PART CAVITY NUMBER
7	MOVING DISTANCE OF SECONDARY LOCK
8	COMPANY SHORT NAME H=3 MM, FORMAT ACCORDING TO DIN 1451-3, TYPEFACE 1, FONT E

POS	TITLE	PART-NO.	PART-REV	DATE	AMOUNT	CUSTOMER-NO.:	MATERIAL	SIMILAR TO RAL	NOTES
A	MALE CONNECTOR 51WAY ASM	33253649	02	05JA17	---	81.25435-6167	---	---	CONDITION OF DELIVERY, POS. 1,2,3,4 ASSEMBLED
1	RECEPTACLE MALE HOUSING 51WAY	33253630	---	---	1	---	PBT GF30 FR17 BLK	9011	ONLY ASSEMBLED PARTS AVAILABLE
2	RECEPTACLE MODULE 51WAY	33253636	---	---	1	---	PBT GF30 FR17 BLK	9011	ONLY ASSEMBLED PARTS AVAILABLE
3	SECONDARY LOCK	33253587	---	---	1	---	PBT GF30 FR17 ORN	2007	ONLY ASSEMBLED PARTS AVAILABLE
4	DAMPING SEAL	33253596	---	---	2	---	LSR 70 SHORE RED-BRN	3011	ONLY ASSEMBLED PARTS AVAILABLE



3				2		1			
DWG STATUS				ZONE	REVISION HISTORY	AUTH	DR	APVD 1	APVD 2
DATE	STG	REV	N/P						
11SE15	R	01			INITIAL RELEASE		K.FAR	P.NAJ	M.SKR
05JA17	R	02		A10 E7 A6 E7 A10 D12 D6 B10 E9	NOTE 5 CHANGED DELPHI LOGO DELETED CUSTOMER SHORT NAME ADDED CUSTOMER NUMBER ADDED NOTE 8 ADDED DIN 32.25 WAS 32.05 DIN 20.4 WAS 20.2 NOTE WITH MATING CONTACT SYSTEM MODIFIED MOUNTING CUTOUT VIEWS ADDED		P.NAJ	M.GRU	M.SKR
21AP17	R	02	AA	66	MATERIAL NAME CORRECTED LSR 70 SHORE WAS LSR 50 SHORE		P.NAJ	M.GRU	M.SKR



**DELPHI**

DELPHI PACKARD ELECTRICAL/ELECTRONIC ARCHITECTURE  
KRAKOW, POLAND

COPYRIGHT 2015 DELPHI CORPORATION AND/OR ITS AFFILIATES.  
ALL RIGHTS RESERVED.

THIS DRAWING IS THE PROPERTY OF DELPHI CORPORATION  
AND CONTAINS DELPHI CONFIDENTIAL INFORMATION.  
THE REPRODUCTION, DISTRIBUTION AND UTILIZATION  
OF THIS DOCUMENT OR ITS RELATED CAD DATA,  
AS WELL AS COMMUNICATION OF ANY CONTENT TO OTHERS,  
WITHOUT EXPRESS AUTHORIZATION, IS PROHIBITED.

TEN RYSUNEK JEST WŁASNOŚCIĄ DELPHI CORPORATION I ZAWIERA POŁPNE  
INFORMACJE. POWIELANIE, ROZPOWISZCZANIE I WYKORZYSTYWANIE TEGO  
DOKUMENTU LUB ZWIĄZANYCH Z NIM DANYCH CAD, JAK RÓWNIEŻ PRZEKAZYWANIE  
INNYM JAKIEKOLWIEK ICH ZAWARTOŚCI, BEZ NADANIA WYRAZNYCH  
UPRAWIEŃ, JEST ZABRONIONE.

DR	DATE
K.FARON	10SE15
P.NAJDUCH	11SE15
M.SIKORA	11SE15
APVD3	
APVD4	
APVD5	

SUBSTANCES OF CONCERN AND RECYCLED CONTENT PER DELPHI 10949001  
SUBSTANCJE NIEBEZPIECZNE I POWTÓRNIIE PRZETWORZONE OKREŚLA  
DELPHI 10949001

MATERIAL  
SEE CHART

DRAWING NAME  
MALE CONNECTOR 51WAY ASM

DRAWING NUMBER  
33253649

SIZE	SCALE	FRAME NO	SHEET NO	STATUS	REV	N/P
A1	2:1	1 OF 1	1 OF 1	R	02	AA

DWG TYP  
CUSTOMER PART DRAWING

WEIGHT (GR)  
89.7

VOLUME (CM³)  
55.7

ROUTING

DISTR CODE  
L

UNLESS OTHERWISE SPECIFIED

GENERAL TOLERANCES  
ACCORDING TO:  
SEE CHART

GD&T  
ACCORDING TO:  
ISO 1101

REFERENCE

FIRST ANGLE PROJECTION

DO NOT SCALE

USE MATH DATA

SHARP CORNER TOLERANCE

LINE DRAWN THROUGH A PART NUMBER  
INDICATES THAT PHYSICAL PARTS ARE NOT  
AVAILABLE FOR ORDERING.

PART NUMBERS THAT DO NOT HAVE A LINE  
PRESENT INDICATE THAT PHYSICAL PARTS  
ARE AVAILABLE FOR ORDERING.

CONTACT DELPHI SALES TO ASSURE  
AVAILABILITY OF PARTS.

DIMENSIONAL RANGE (MM)	CHART	E1
FROM	> 0	> 20
TO	> 20	> 30
	> 30	> 70
	> 70	> 100
	> 100	> 150
	> 150	> 200
	> 200	> 250
	> 250	> 300
	> 300	> 400

TOLERANCE UNLESS OTHERWISE SPECIFIED

±0.15	±0.2	±0.3	±0.4	±0.5	±0.6	±0.8	±1	±1.2
-------	------	------	------	------	------	------	----	------

ANGULAR TOLERANCE ±2°

# Mouser Electronics

Authorized Distributor

Click to View Pricing, Inventory, Delivery & Lifecycle Information:

[Aptiv:](#)

[33253649](#)