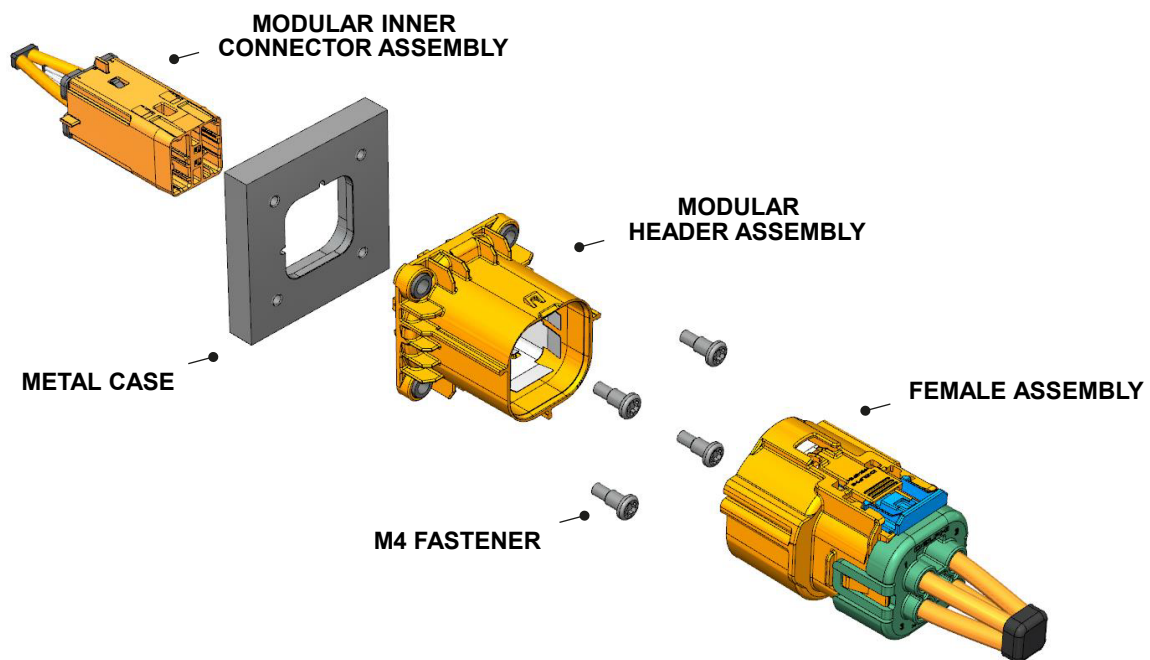
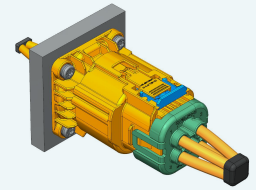


## HV CTS280/630 Splice Header 5mm<sup>2</sup> ISO cable



### BENEFITS

- Inner connector with TPA can be plugged into header during device assembly (on wire-to-device)
- Industry-leading vibration and sealing performance
- Field proven design used across electrification market



### FEATURES

- Tool-less unmating system
- Finger proof/touch safe
- Aluminum compression bushings
- ISO cable compatible



### AVAILABLE CONFIGURATIONS

Connector Type	Wire-to-device, wire-to-wire
Cable Exit Orientation	90°, 180°
Cable Range (mm <sup>2</sup> )	2 - 5 (power) 0.5 (HVIL)
Terminal Type	CTS 2.8, Metri-pack 2.8
# of Power Terminals	2
Shielding Type	Individual
HVIL	Shunt on female
Assembly Assurance	CPA/TPA
Number of Indexes	3 (180°), 1 (90°)



### BILL OF MATERIALS

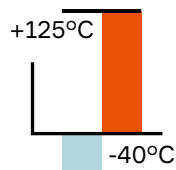
**HV CTS280/630 Splice Header, 5mm<sup>2</sup> ISO cable**  
Kit part number: 35605969 contains:

Part Number	Description	Quantity
33300632	Header Outer	1
33311166	Header Inner Connector	1
13597855	MTS 0.64 HVIL female terminal 0.5–0.75 mm	2
33299800	630/280 male terminal 3–5 mm <sup>2</sup>	2
33299799	TPA (Terminal Position Assurance)	2

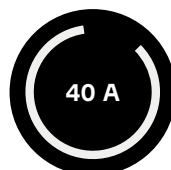


## PERFORMANCE

TEMP  
RANGE



MAX CURRENT  
AT 85°C



MAX DC  
VOLTAGE



VIBRATION  
LEVEL



SEALING  
CLASS



ELECTRICAL  
PROTECTION



## ASSOCIATED PARTS

**HV CTS280/630 Splice Female Connector, 5mm<sup>2</sup> ISO cable**

Part Kit Number: 35583004 contains:

Part Number	Description	Quantity
33300634	Mating Connector	1
13882331	CTS 2.8 female terminal 3–5 mm <sup>2</sup>	2
13984307	CTS 6.3 female terminal 4–6 mm <sup>2</sup>	2
33292550	Inner ferrule 5 mm <sup>2</sup> ISO cable	4
33292551	Outer ferrule 5 mm <sup>2</sup> ISO cable	4
35072735	Female mat seal 5 mm <sup>2</sup>	1
35072738	Mat seal retainer 5 mm <sup>2</sup>	1



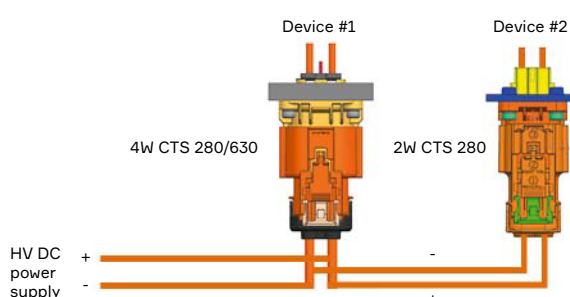
## APPLICATION GUIDE

Power circuits shown,  
two sets of 2 in x 1 out



Terminal crimp  
wings are shown  
un-crimped.

Application Guide for Aptiv 4W CTS 630/280 Shielded Connection  
Typical Application – \* Load Current Guidance



**\* Typical steady state currents  
with 5 mm<sup>2</sup> cable on all circuits**

Input from DC power supply: 40–45 A  
Current to Device #1: ≤ 40 A  
Current to Device #2: ≤ 30 A

*\* Connector current ratings in vehicle applications will be affected by multiple factors including device heating, harness coverings, and device duty cycles. Please review application details with Aptiv Product Engineering for verification of current carrying capability.*

# Mouser Electronics

Authorized Distributor

Click to View Pricing, Inventory, Delivery & Lifecycle Information:

[Aptiv:](#)  
[35605969](#)