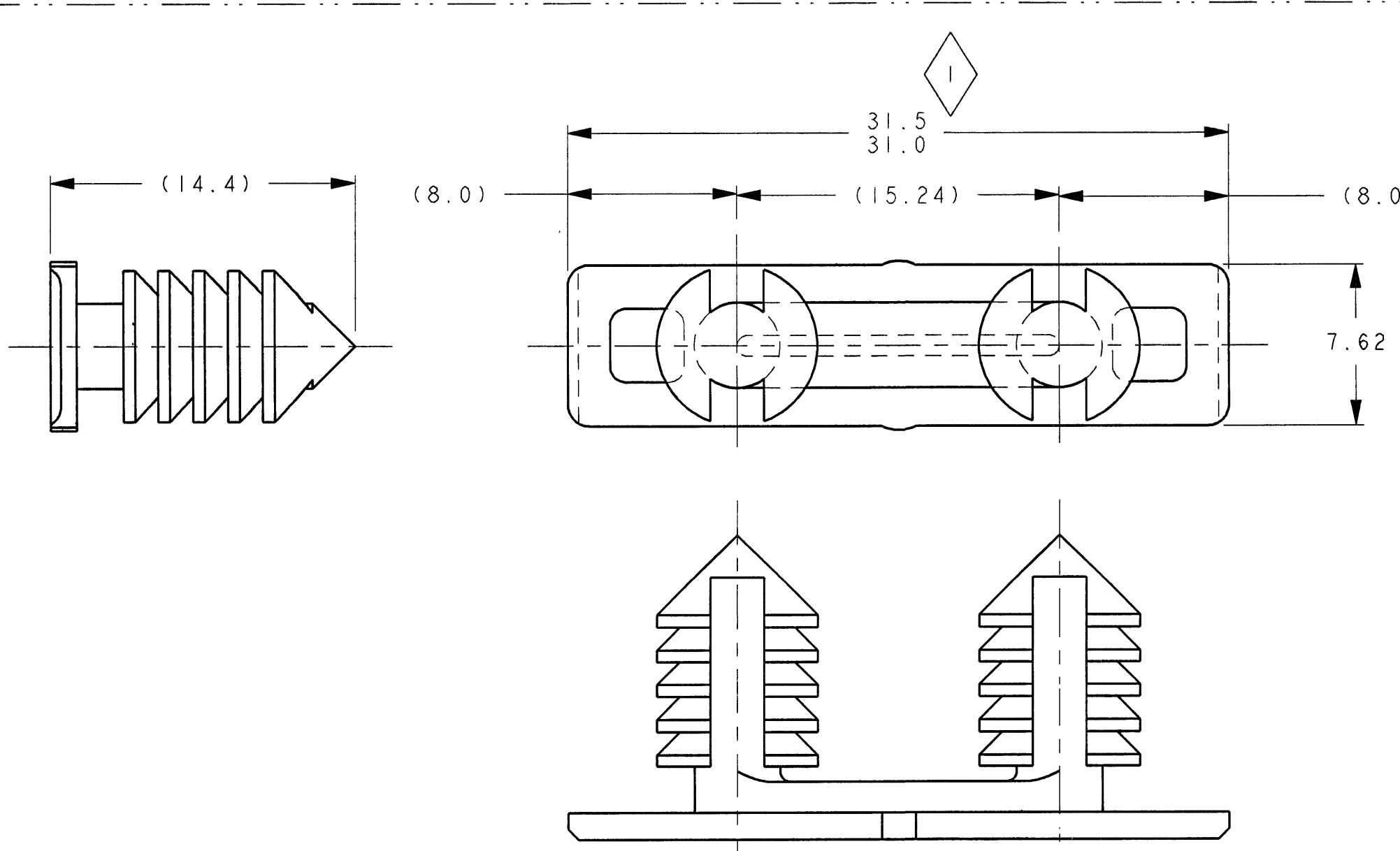
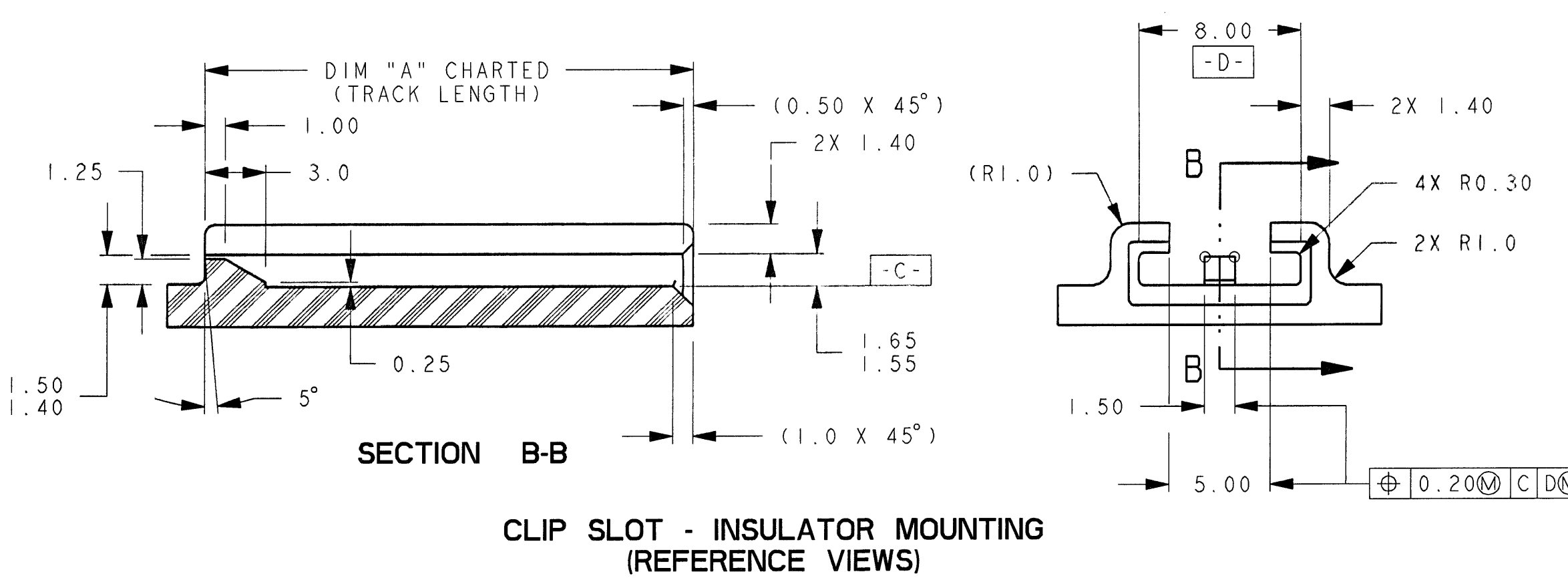


P/N 54200010 SHOWN  
TYPE "B" WITH FORWARD STOP



P/N G62000-A SHOWN  
TYPE "A" UNIVERSAL DESIGN  
DIMENSIONS SAME AS TYPE "B"  
EXCEPT AS SHOWN  
(NOTE: NOT TOOLED AT FCI)

NOTES:

QUALITY ASSURANCE REQUIREMENTS PER DCA PS-7300: 1  
SPC DATA REQUIRED

RECOMMENDED MTG HOLE DIA 6.60 +0.28/-0.13  
PANEL THICKNESS 0.76MIN.

(K) INDICATES IN-PROCESS INSPECTION FOR  
MANUFACTURING DIMENSION(S) OR  
SPECIFICATION(S) : 1

WIRING FABRICATORS MUST PURCHASE FROM  
SOURCES SHOWN

MUST CONFORM TO THE FOLLOWING DCA STANDARDS:

1. PS-7300  
2. PS-6013  
3. PS-9065

MATERIAL: NYLON 6/6 IMPACT MODIFIED & STABILIZED  
BASF ULTRAMID A3Z HP  
PER DCA MSDB41  
CPN # 4741  
COLOR: BLACK

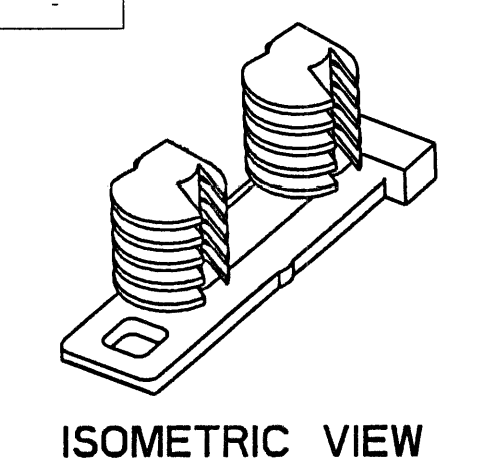
VENDOR MUST SUBIT FOR ENGINEERING APPROVAL  
LOCATION & TYPES OF PULLER RINGS, GATING,  
PARTING LINES & EJECTION PRIOR TO CONSTRUCTION  
OF TOOLING

CLIP MUST WITHSTAND A MINIMUM FORCE OF  
130 NEWTONS TO PUSH THROUGH OR PULL BACK  
FROM CONNECTOR

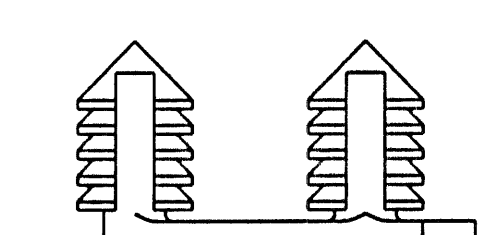
ANNUAL QUALITY REQUIREMENTS:  
IT IS PERMISSIBLE TO PERFORM CONTINUOUS CONFORMANCE PER  
FCI SPECIFICATIONS #AQA-001 INSTEAD OF ANNUAL LAYOUT &  
ANNUAL PV REQUIREMENTS OF QS-9000 SECTION 2 & PF-9600

-CURRENT PRODUCTION TOOLING

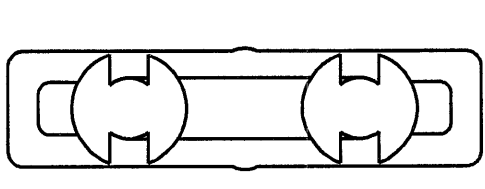
-POINT OF LAST RUN



ISOMETRIC VIEW



FULL SIZE VIEWS  
TYPE "B"



FULL SIZE VIEWS  
TYPE "A"

9511	05-10-07	B3	ALL	REDRAWN AS G62000-CUST ON NEW TITLE BLOCK REPLACED G62001 REV B1. MATERIAL A3Z HP CPN4741 WAS A3Z	DRK	SSS	SSS	
ECH-NUMBER	DATE	W-D-Y	REVISION	ZONE	CHANGE DESCRIPTION	DRAWN BY	CHK. BY	APPR. BY
PRODUCT SPEC.		PACKAGING SPEC.		APPLICATION SPEC.		THIS DRAWING AND ALL OTHER INFORMATION CONTAINED THEREIN IS PROPRIETARY AND THE PROPERTY OF FCI. This drawing may not be copied, reproduced or disclosed to any third party without the expressed written permission of FCI. © FCI April 1998		
TOLERANCES : 1 PLACE DIM ±0.25 2 PLACE DIM ±0.10 ANGULAR DIM ±2°		MATERIAL : SEE NOTES		SURFACE FINISH		3RD ANGLE		CAD SYSTEM
CONTRACT NO.		COLOR : SEE NOTES		DO NOT SCALE DRAWINGS		TOOL NO. M-256 CUST		ECO Lw. Cdr NA
DATE		NAME		TYPE		DRAWING NUMBER		DIMENSIONS IN MILLIMETERS
DRAWN 05-09-01 RAJ KUMAR		CHECKED 05-09-01 SUCHA SIAN		APPROVED 05-09-01 SUCHA SIAN		FILE NAME		SCALE 4:1
CLIP-INSULATOR MOUNTING		DBL X-MAS TREE		(2.80MM IN-LINE CONN. SYS.)		G62000-CUST		SCALE 4:1
G62000-CUST		G62000-CUST		G62000-CUST		G62000-CUST		SCALE 4:1

# Mouser Electronics

Authorized Distributor

Click to View Pricing, Inventory, Delivery & Lifecycle Information:

[Aptiv:](#)

[54200010](#) [54200010-B](#)